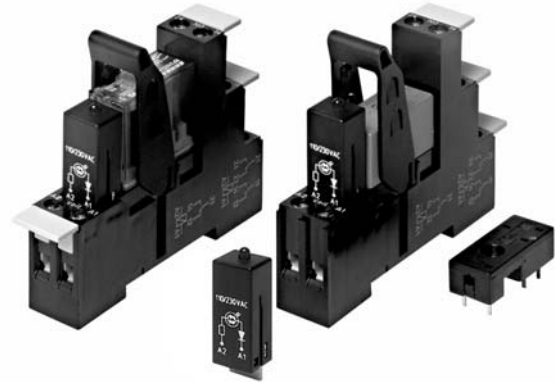


Accessories Industrial Power Relay RT / RP / SR2M

- For Industrial Power Relay RT / RP / SR2M, pinnings 3.5mm / 5mm; relay heights 15.7 / 25.5mm
- Din-rail socket with logical setup of connections (input/output)
- New retainer clip with ejection function
- Easy replacement of relays on a densely packed DIN rail
- High quality rising clamp terminals
- Captive combination terminal screws
- No reduction of protection class or creepage/clearance with plastic retainer
- Simple plug-in indicator- and protection modules
- White snap-on marking tags
- RoHS compliant (Directive 2002/95/EC)



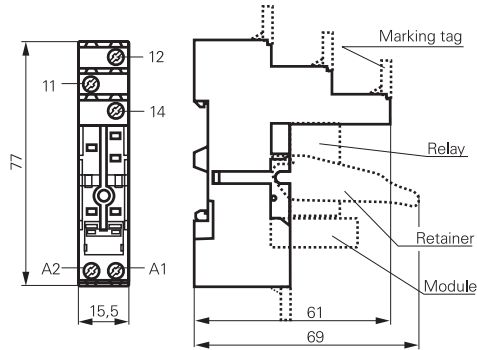
F0228-B

Socket with screw-type terminals for DIN rail mounting

RT 78 724 Socket with screw-type terminals, pinning 3.5 mm for DIN rail mounting



F0261-A

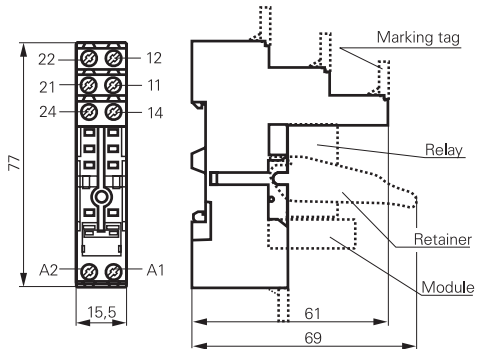


S0416-AA

RT 78 726 Socket with screw-type terminals, pinning 5 mm for DIN rail mounting



F0262-A



S0416-AB

Approvals

VDE REG.-Nr. 6106 in preparation, **UL** US E135149

Technical data

RT 78 724 / RT 78 726

| | |
|---|--|
| Rated current | 12 A *) |
| Rated voltage / max.switching voltage AC | 240/400 VAC |
| Dielectric strength coil-contact circuit | 4000 V _{rms} |
| open contact circuit | 1000 V _{rms} |
| adjacent contact circuits | 2500 V _{rms} |
| Clearance / creepage coil-contact circuit | RT: ≥ 10 / 10 mm; RP, SR2M: ≥ 8 / 8 mm |

*) For 1 pole relays (16 A) the relay terminals 11-21, 12-22 and 14-24 have to be bridged.
For 1 pole relays (12 A) the relay terminals 11-12-14 have to be connected to the socket terminals 21-12-24

■ Not suitable for bistable relays with 2 coils!

| Technical data (Continued) | | RT 78 724 / RT 78 726 |
|---|--|-------------------------|
| Material group of insulation parts | | ≥ IIIa |
| Insulation to IEC 60664-1 | | |
| Type of insulation coil-contact circuit | | reinforced |
| open contact circuit | | functional |
| adjacent contact circuits | | functional |
| Rated insulation voltage | | 250 V |
| Pollution degree | | 2 |
| Rated voltage system | | 230/400 V |
| Overvoltage category | | III |
| RoHS - Directive 2002/95/EC | | compliant |
| Degree of protection DIN 40050 | | IP20 |
| Ambient temperature range | | -20...+85°C |
| Terminals | | screw |
| Terminal screw torque acc. IEC 61984 | | 0.5 Nm |
| max. | | 0.7 Nm |
| Wire cross section | | |
| single wire | | 2 x 2.5 mm ² |
| fine wire | | 2 x 2.5 mm ² |
| with bootlace crimp (DIN 46228/1) | | 2 x 1.5 mm ² |
| Insertion cycles | | A (10) |
| Max. Insertion Force total | | 100 N |
| Mounting distance | | 0, dense packing |
| Weight | | 36 g |
| Packaging unit | | 10 pcs |

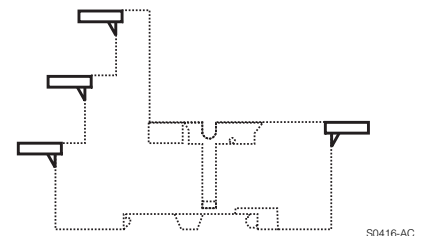
| Socket with screw-type terminals for DIN rail mounting | | |
|--|--|-------------|
| Type | | Part Number |
| RT 78 724 | Socket with screw-type terminals, pinning 3.5 mm for DIN rail mounting | 8-1415035-1 |
| RT 78 726 | Socket with screw-type terminals, pinning 5 mm for DIN rail mounting | 6-1415035-1 |

| Accessories for RT 78 724, RT 78 726 | | |
|--------------------------------------|---|-------------|
| Type | | Part Number |
| RT 17 016 | Plastic retaining clip, relay height 15.7 and 25.5 mm | 1-1415038-1 |
| RT 17 040 | Marking tag | 2-1415038-1 |

| LED- and Protection Modules for RT 78 724, RT 78 726 | | | |
|--|------|---------------------------------------|-------------|
| Easy insertion of module into the socket | | | |
| Wiring in parallel to the coil | | | |
| Type | | | Part Number |
| PTM TO 0A0 | EM09 | Protection diode (standard, A1+, A2-) | 9-1415036-1 |
| PTM TO 0L0 | EM01 | Protection diode (A1-, A2+) | 0-1415037-1 |
| PTM U0 524 | EM02 | RC-network 6...60 VAC | 1-1415037-1 |
| PTM U0 730 | EM03 | RC-network 110...230 VAC | 2-1415037-1 |
| PTM V0 524 | EM04 | Varistor 24 VAC | 3-1415037-1 |
| PTM V0 615 | EM13 | Varistor 115 VAC | 6-1415365-1 |
| PTM V0 730 | EM05 | Varistor 230 VAC | 4-1415037-1 |

| LED | | | |
|-------------------|------|--|-------------|
| Type | | | Part Number |
| PTM L0 524 | EM07 | red LED 6...24 VDC/VAC | 6-1415036-1 |
| PTM G0 524 | EM11 | green LED 6...24 VDC/VAC | 3-1415036-1 |
| PTM L0 024 | EM18 | red LED 6...24 VDC w. prot.diode (std, A1+, A2-) | 5-1415036-1 |
| PTM G0 024 | EM12 | green LED 6...24 VDC w. prot.diode (std, A1+, A2-) | 2-1415036-1 |
| PTM L1 024 | EM08 | red LED 6...24 VDC w. prot. diode (A1-, A2+) | 8-1415036-1 |
| PTM L0 110 | EM19 | red LED 48...110 VDC w. prot. diode (A1+, A2-) | 2-1415392-1 |
| PTM L0 730 | EM06 | red LED 110...230 VAC | 7-1415036-1 |
| PTM G0 730 | EM10 | green LED 110...230 VAC | 4-1415036-1 |

Relay Packages
Complete packages consisting of a relay mounted on a socket: see Relay Package RT



Marking tags
 ■ White marking area 15.5 x 6 mm
 ■ Snaps on socket in up to 4 positions



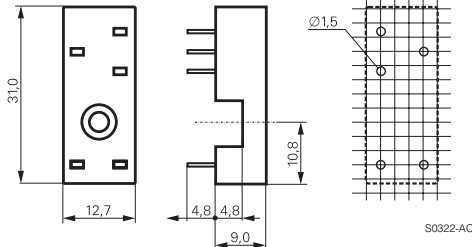
Accessories Industrial Power Relay RT / RP / SR2M (Continued)

Sockets for PCB RP 78 601/602

RP 78 601 Socket with PCB terminals, pinning 3.5 mm



F0116-A

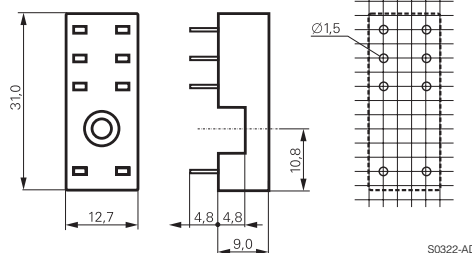


S0322-AC

RP 78 602 Socket with PCB terminals, pinning 5 mm



F0117-A



S0322-AD

Approvals

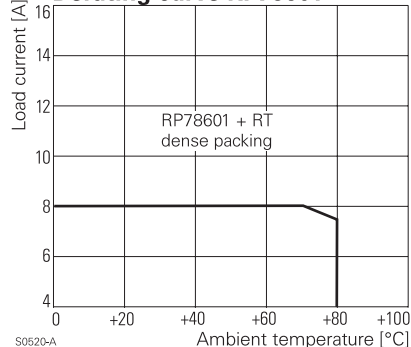


Technical data

RP 78 601 / RP 78 602

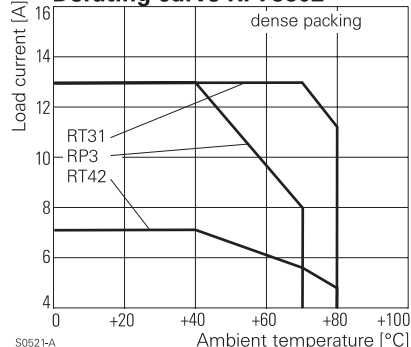
| | |
|---|--|
| Rated current | 12 A *) |
| Limiting continuous current | see derating curve |
| Rated voltage / max. switching voltage AC | 240/400 |
| Dielectric strength coil-contact circuit | 4000 V _{rms} |
| open contact circuit | 1000 V _{rms} |
| adjacent contact circuits | 2500 V _{rms} |
| Clearance / creepage coil-contact circuit | RT: ≥ 10 / 10 mm, RP, SR2M: ≥ 8 / 8 mm |
| Material group of insulation parts | ≥ IIIa |
| Insulation to IEC 60664-1 | |
| Type of insulation coil-contact circuit | reinforced |
| open contact circuit | functional |
| adjacent contact circuits | functional |
| Rated insulation voltage | 250 V |
| Pollution degree | 2 |
| Rated voltage system | 230/400 V |
| Overvoltage category | III |
| RoHS - Directive 2002/95/EC | compliant |
| Degree of protection DIN 40050 | IP20 |
| Ambient temperature range | -40...+80°C |
| Terminals | pcb |
| Insertion cycles | A (10) |
| Max. Insertion Force total | 100 N |
| Mounting distance | 0, dense packing |
| Resistance to soldering heat | 270°C / 10 s |
| Weight | 3 g |
| Packaging unit | 100 pcs |

Derating curve RP78601



S0520-A

Derating curve RP78602



S0521-A

Socket with PCB terminals

| Type | Part Number |
|--|-------------|
| RP 78 601 Socket with PCB terminals, pinning 3.5 mm | 8-1393234-4 |
| RP 78 602 Socket with PCB terminals, pinning 5 mm | 8-1393234-5 |

Accessories for RP 78 601, RP 78 602

| Type | Part Number |
|--|-------------|
| RT 16 041 Plastic retaining clip RT, relay height 15.7 mm | 3-1393161-4 |
| RP 16 100 Plastic retaining clip RP, relay height 25.5 mm | 1-1393161-7 |
| RT 28 516 Metal retaining clip RT, relay height 15.7 mm | 0-1419108-7 |
| RP 28 500 Metal retaining clip RP, relay height 25.5 mm | 1-1393161-9 |

*) For 1 pole relays (16 A) the relay terminals 11-21, 12-22 and 14-24 have to be bridged on the PCB.