



Cushyfloat Mounting



17/1600 | 17/1609 | 17/1657 | 17/1841

Cushyfloat Mounting

Originally designed for use with marine engines, this compact, low profile mounting is easy to install. It combines 3 way control of the suspended equipment with relatively large static deflections where the rubber is loaded in shear and compression.

The design incorporates bump and rebound control features which limit excessive movements under shock loading. Top metal cover gives protection against oil contamination and protective finish resists corrosion attack. Propeller thrust on marine applications is accommodated. There are four sizes in the standard range with varying degrees of rubber hardness catering for point loads from 32kg to 3000kg. Natural frequencies as low as 8Hz are possible.

The Cushyfloat™ mounting is a general purpose unit designed to provide effective isolation of vibration and noise arising from both static and mobile equipment including Marine/Industrial Vehicle Engines, Generator Sets, Pumps and Compressors.

About Trelleborg Industrial AVS

Over 100 years of experience as Metalastik and Novibra, today Trelleborg Industrial AVS make improvements people can physically feel. From smoother travel to quieter, more efficient machines, we make life feel better. With quality, testing and compliance built in, we're in it for the long haul, ensuring your solution still works, over an extended and often arduous life-cycle.

With three state-of-the-art manufacturing plants across the globe, our experience in rubber to metal bonding enhances several industries, including off-highway vehicles, rail and mass transit, marine and energy and general industry.

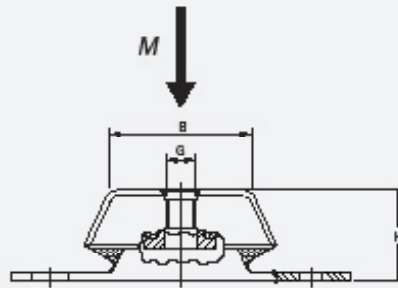
We offer an end-to-end service, to take you from concept through design, manufacturing and testing to delivery. This reduces the complexity of supply, helping you cut costs, mitigate risk and receive on time, on budget delivery.

Trelleborg IAVS is part of Trelleborg Group, which employs 15,000 people in over 40 countries. Whatever your challenge, whatever your role and wherever you are, we are nearby to offer expert knowledge and quality solutions.

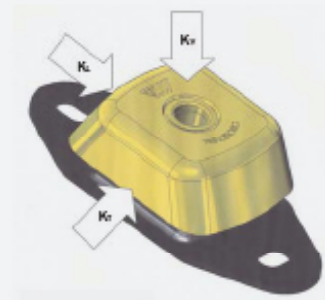
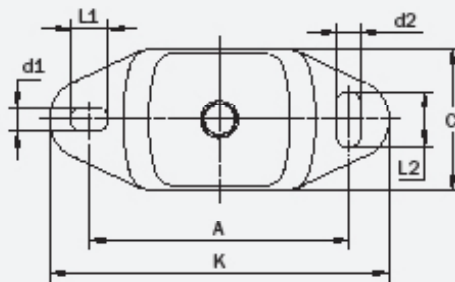
Cushyfloat 17/1600 | 17/1609 | 17/1657

The ideal stiffness ratios are a guarantee for optimal isolation in vertical and lateral direction (shown in the table below). Especially in light-build leisure boats, Cushyfloats give excellent results reducing vibration to a minimum and a significant (structure borne) noise reduction.

This combined with the high-tech rubber compounds of Trelleborg Industrial AVS with relatively low dynamic stiffness features ensure good isolation from idling speed up to the maximum speed of the engine and ensure low life time cost! Trelleborg Height Adjusters HA and HAD Series can be used with Cushyfloat™ mountings.

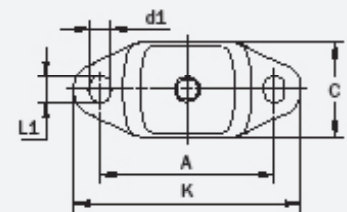


17/1609
17/1657



Nominal stiffness ratio $K_v : 1 \bullet K_L : 2.5 \bullet K_r : 0.75$

17-1600



PRODUCT NO.	DIMENSIONS (mm)										WEIGHT (kg)	M-MAX (kg)	M-MAX* (kg)	
	B	C	A	K	H	d1	L1	d2	L2	G				
17/1600 - 45													50	35
17/1600 - 55	62	60	100	120	38	11	14	-	-	M12	0.3	65	55	
17/1600 - 65												100	80	
17/1609 - 45												150	95	
17/1609 - 55	76	75	140	183	50	13	20	13	30	M16	0.9	210	140	
17/1609 - 65												300	210	
17/1609 - 75												450	315	
17/1657 - 45												350	250	
17/1657 - 55	87	112	182	230	70	18	26	18	34	M20	2.4	520	370	
17/1657 - 65												800	560	
17/1657 - 75												1000	700	

NOTE: M-Max* = With Thrust Force

Product performance information given is nominal static data. In some applications static or dynamic properties may be critical. For any proposed application, an assessment by our Design and Applications team may be required.



WWW.TRELLEBORG.COM/ANTI-VIBRATION-SOLUTIONS

For further information visit our website or e-mail industrialavs@trelleborg.com

The content in this datasheet was correct at the time of printing, but is subject to change without notice.