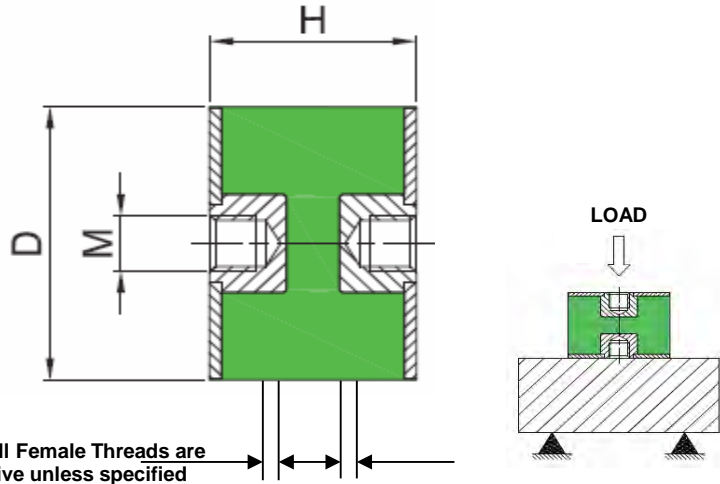
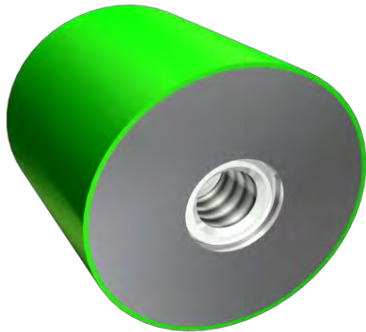




Bobbin Mounts - Type DD (Female - Female)



Note: All Female Threads are Captive unless specified

The Type DD Bobbin Mounts are designed to be used on a wide range of applications, and can be used in compression or shear.

They are manufactured from Natural Rubber in a variety of hardnesses to suit the application, and have zinc plated steel end sections with either welded or cold formed threads.

This range comes with a Female thread on either end that are captive to avoid compromise to the integrity or functionality of the Rubber section.

RS Ref:	Fibet Ref:	D	H	M	IRHD	Stiffness (DaN/mm)	Max. Static Deflection (mm)	Maximum Stiffness (DaN)
298-3171	1615DD04-45	16	15	M4	45	4.7	3.0	14.1
298-3187	1615DD04-60	16	15	M4	60	8.6	3.0	25.8
237-2060	2020DD06-45 (Female Thread Non-Captive)	20	20	M6	45	4.6	4.0	18.4
237-2076	2020DD06-60 (Female Thread Non-Captive)	20	20	M6	60	8.6	4.0	34.4
720-3326	2525DD06-60	25	25	M6	60	11.9	5.0	59.5
777-3216	3020DD08-60	30	20	M8	60	24.0	4.0	96.0
237-2082	3030DD08-45	30	30	M8	45	6.1	6.0	36.6
237-2098	3030DD08-60	30	30	M8	60	11.5	6.0	69.0
720-3335	4030DD08-60	40	30	M8	60	25.0	6.0	150.0
298-3193	4035DD10-45	40	35	M10	45	10.3	7.0	72.1
237-2105	4035DD10-60	40	35	M10	60	18.7	7.0	130.9
237-2111	5030DD10-45	50	30	M10	45	28.4	5.0	142.0
237-2127	5045DD10-70	50	45	M10	70	30.0	9.0	270.0
720-3338	5050DD10-60	50	50	M10	60	17.8	10.0	178.0