

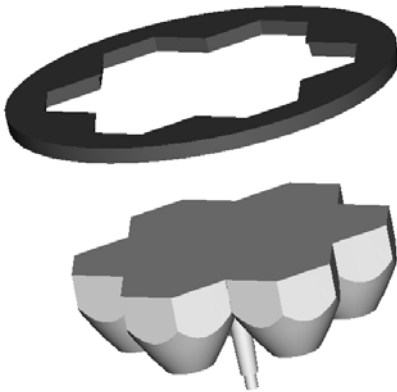


Our Focus is in Plastics

Polymer Optics Ltd.

6 Kiln Ride, Wokingham,
Berks., RG40 3JL, England
Tel/Fax: +44 (0) 1189 893341
www.polymer-optics.co.uk

Bezel for 7 Cell Cluster Optics - Part No. 271



- Designed for POL 122, 125, 261, 262 and 264 Cluster optic products
- Precision moulded in high quality Polycarbonate for thermal stability and system durability
- Part of the Polymer Optics “Modular LED Optics”® range

Typical dimensional toleranc
to +/-0.2mm

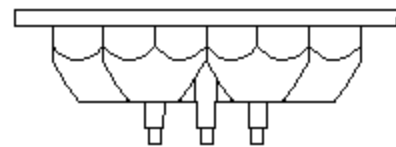
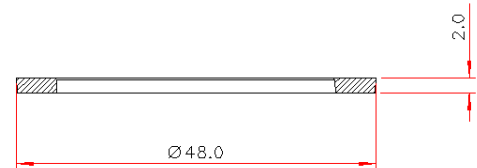
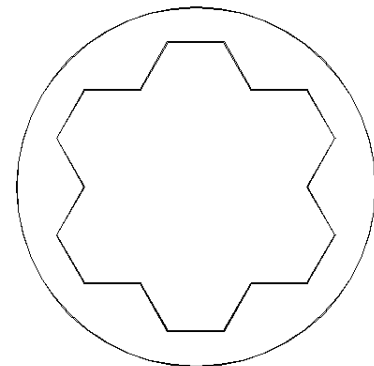
The POL 271 Bezel for 7 Cell Cluster Optics simply pushes onto the front of the 7 Cell Cluster range optics, to convert the outer profile of the optic to a simple circular format and enable it to be mounted into a standard 50mm fitting.

The POL 271 bezel fits closely to the edge of the 7 Cell Cluster optic without obscuring the out put beam.

The POL 271 bezel can provide a simple way to retain the 7 Cell Cluster based light engine assembly in the luminaire and prevent dust ingress.

The POL 271 bezel provides an aesthetic contrast between the illuminated optic aperture and the luminaire body and prevents light bleed from within the luminaire.

Bezel supplied in black as standard, but can be supplied in alternative colours to special order. Please contact POL or its distributors to enquire about this.



BEZEL POSITION ON CLUSTER OPTIC