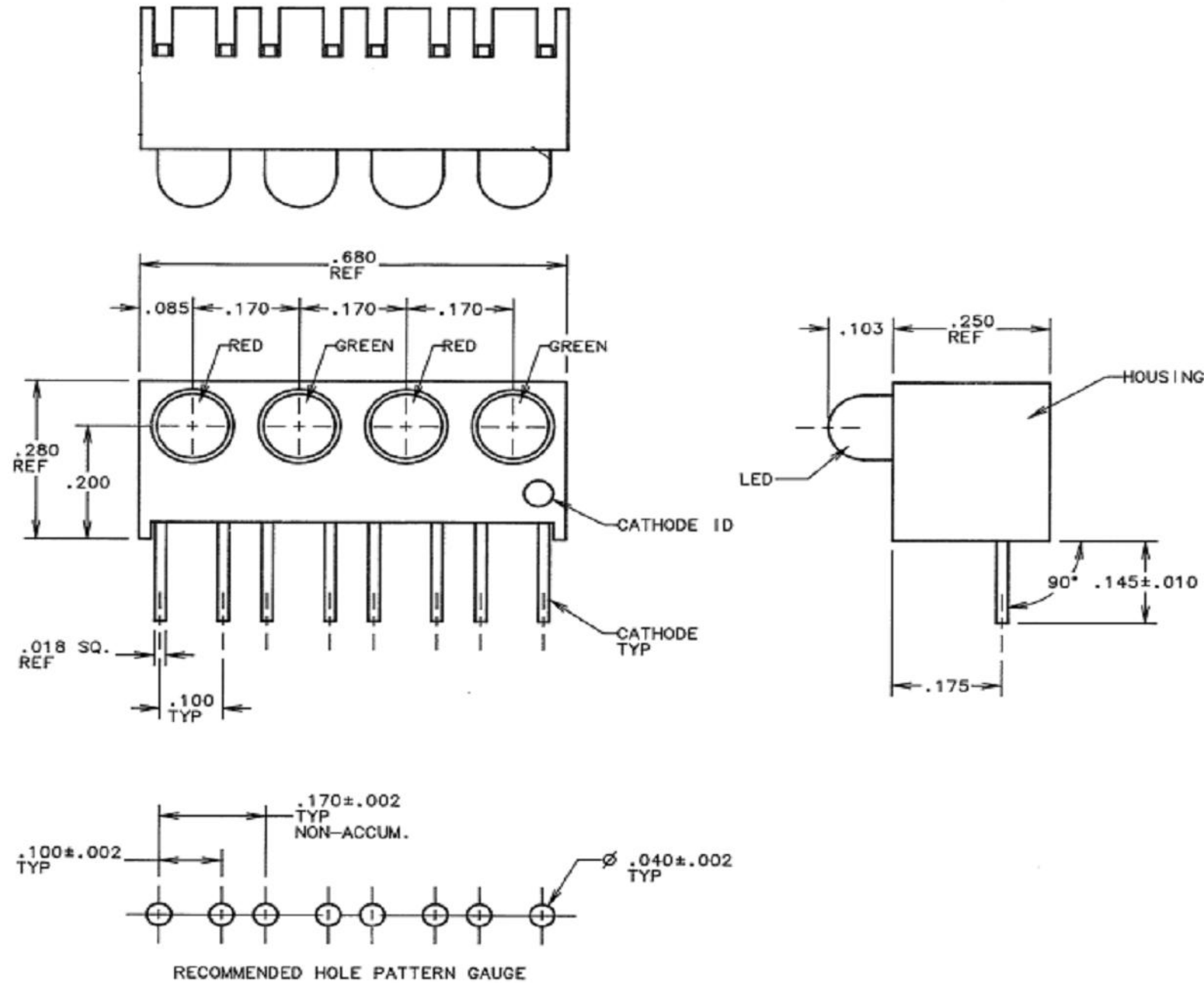


REV	ECN NO	REVISIONS	DRN	CKD	APP	DATE
A		NEW RELEASE	VP	JTD	NO	11-03-15



OPERATING CHARACTERISTICS AT 25°C AMBIENT						
LED CHARACTERISTICS	LED COLOR	MIN.	TYP.	MAX.	UNITS	TEST CONDITIONS
LUMINOUS INTENSITY	RED	1.0	1.6		mcd	I _F = 2 mA
	GREEN	1.0	1.6			
PEAK WAVELENGTH	RED		635		nm	
	GREEN		565			
DOMINANT WAVELENGTH	RED		623		nm	
	GREEN	560	569	572		
FORWARD VOLTAGE	RED		1.7	2.2	V	I _F = 2 mA
	GREEN		1.9	2.2		
REVERSE CURRENT	ALL			10	mA	V _R = 5 V
VIEWING ANGLE	ALL		60		DEGREE	

ABSOLUTE MAXIMUM RATINGS AT 25°C AMBIENT	LED COLOR		UNITS
	RED	GREEN	
POWER DISSIPATION	20		mW
PEAK FORWARD CURRENT (1/10 DUTY CYCLE, 0.1ms PULSE WIDTH)	500		mA
CONTINUOUS FORWARD CURRENT	7		mA
LINEAR DERATING FROM 95°C	0.7		mA/°C
REVERSE VOLTAGE	5		V
LEAD SOLDERING TEMPERATURE (.0787" [2.0mm] FROM BODY) FOR 5 SEC.	260		°C
OPERATING TEMPERATURE	-55 TO +100		°C
STORAGE TEMPERATURE	-55 TO +100		°C

NOTES:

- LEADS TO FIT INTO HOLE PATTERN AS SHOWN.
- LED LEAD DIMENSIONS SHOWN ARE MEASURED AT HOUSING EXIT.
- THIS ASSEMBLY CONTAINS ELECTROSTATIC DISCHARGE SENSITIVE DEVICES(ESDS). MAINTAIN ALL PRECAUTIONARY MEASURES DURING ASSEMBLY, HANDLING AND STORAGE IN ACCORDANCE WITH IPC-A-610.
- DIALIGHT PART NUMBER: 551-1107-807F

RoHS COMPLIANT 551-1107-807F

Part Numbers with the "F" suffix ending are RoHS Compliant. Packaging is marked with "RoHS Compliant" label or equivalent markings. Parts can be wave soldered, dip soldered or hand soldered using typical lead-free soldering process with max 260°C temp. for 5 sec.

THIS DRAWING AND THE CONTENTS HEREIN ARE CONFIDENTIAL AND THE SOLE PROPERTY OF DIALIGHT. REPRODUCTION OF THIS DRAWING OR CONSTRUCTION OF ANY PARTS WITHIN THIS DRAWING ARE FORBIDDEN WITHOUT THE WRITTEN CONSENT OF DIALIGHT.		
SCALE: DRAWING SCALE ALL DIM'S IN: INCHES (MM)	DRAWING NUMBER C18227	REV A
TOLERANCES: UNLESS OTHERWISE SPECIFIED FRACTIONS: ±1/64 DECIMALS (.XX): ±.01 DECIMALS (.XXX): ±.005 DECIMALS (.XXXX): ±.0005 ANGLES: ±1°	TITLE 3MM QUAD CB1	
FINISH:	MATERIAL	
FSCM 83330	1501 ROUTE 34 SOUTH FARMINGDALE, NJ 07727	
	SHEET 1 OF 1	FAMILY TABLE: