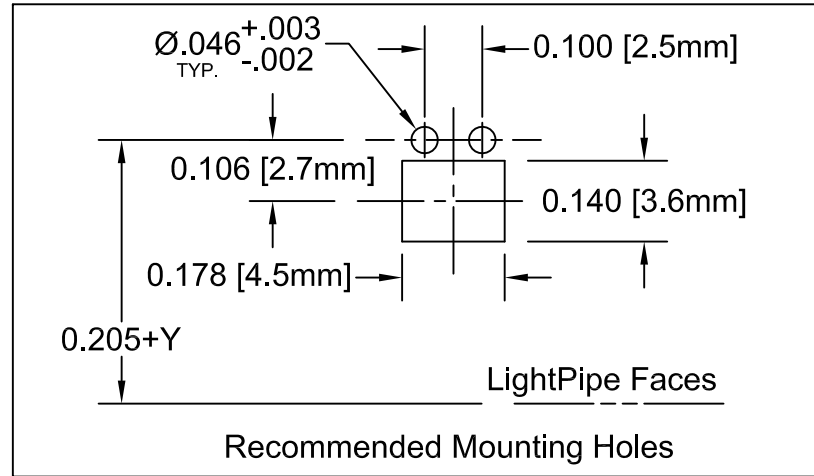
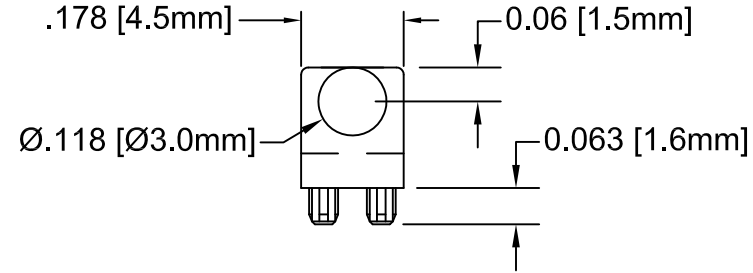
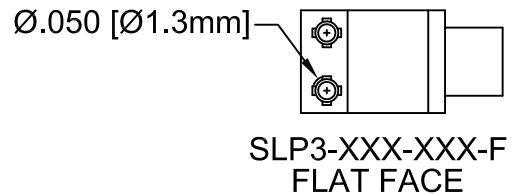
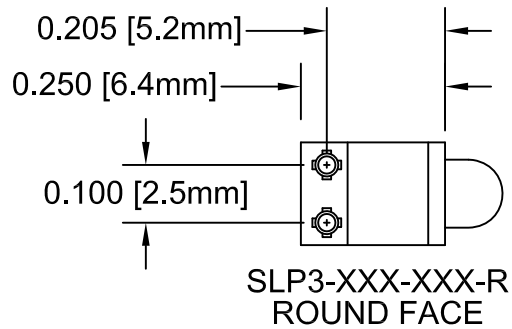
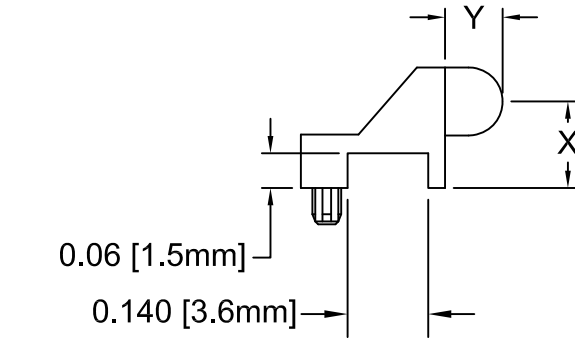
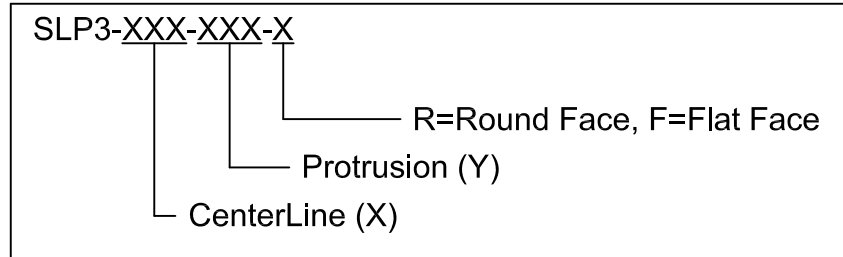


REV.	DESCRIPTION	DATE	APPROVED
C	Removed SLP3-150-XXX-X Spec.	06/04/08	M. C.
D	Title Revision	03/06/12	T. Y.
E	Added Part Offering List & Removed Raw Material Notes	10/11/13	G. W.
F	Added P/Ns onto Offering List	10/31/13	G. W.
G	Edit Dimension Typo on Part Offering List, page 3	11/25/13	G. W.



**PART NUMBER DESIGNATION**



3. ALL DIMENSIONS IN INCHES UNLESS OTHERWISE SPECIFIED
2. MATERIAL: POLYCARBONATE, 94V-HB, CLEAR. BIVAR MATERIAL CODE 49-CR.
1. GENERAL SPECIFICATIONS: BIVAR MOLDED COMPONENT SPECIFICATION BV00-E101.

STANDARD TOLERANCE (UNLESS OTHERWISE SPECIFIED)	
DECIMALS	ANGULAR
.X ±.1	X° ± 1°
.XX ±.01	
.XXX ±.005	



**BIVAR**<sup>®</sup>  
 4 THOMAS, IRVINE, CA. 92618  
 TEL: (949) 951-8808 FAX: (949) 951-3974

**TITLE:** LIGHT PIPE  
 90° VARIABLE CENTERLINE



<b>DESIGNED:</b> Michael Chen	<b>DATE:</b> 04/14/03	<b>PART NO:</b> SLP3-XXX-XXX-X	<b>REVISION:</b> G
<b>CHECKED:</b> D. Green	<b>DATE:</b> 04/14/03	<b>CAGE CODE :</b> 32559	<b>SHEET # 1 OF 3</b>

CAD GENERATED DOCUMENT, DO NOT MEASURE DRAWING.

REV.	DESCRIPTION	DATE	APPROVED
	See Sheet #1		

STANDARD OFFERING LIST


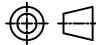
PART NUMBER	X DIMENSION	Y DIMENSION	FACE
SLP3-200-100-F	0.200" [5.1mm]	0.100" [2.5mm]	FLAT FACE
SLP3-200-100-R	0.200" [5.1mm]	0.100" [2.5mm]	ROUND FACE
SLP3-200-150-F	0.200" [5.1mm]	0.150" [3.8mm]	FLAT FACE
SLP3-200-150-R	0.200" [5.1mm]	0.150" [3.8mm]	ROUND FACE
SLP3-200-200-R	0.200" [5.1mm]	0.200" [5.1mm]	ROUND FACE
SLP3-200-250-F	0.200" [5.1mm]	0.250" [6.4mm]	FLAT FACE
SLP3-250-100-F	0.250" [6.35mm]	0.100" [2.5mm]	FLAT FACE
SLP3-250-100-R	0.250" [6.35mm]	0.100" [2.5mm]	ROUND FACE
SLP3-300-100-F	0.300" [7.6mm]	0.100" [2.5mm]	FLAT FACE
SLP3-300-100-R	0.300" [7.6mm]	0.100" [2.5mm]	ROUND FACE
SLP3-300-250-F	0.300" [7.6mm]	0.250" [6.4mm]	FLAT FACE
SLP3-300-250-R	0.300" [7.6mm]	0.250" [6.4mm]	ROUND FACE
SLP3-300-450-F	0.300" [7.6mm]	0.450" [11.4mm]	FLAT FACE
SLP3-300-450-R	0.300" [7.6mm]	0.450" [11.4mm]	ROUND FACE
SLP3-350-100-F	0.350" [8.9mm]	0.100" [2.5mm]	FLAT FACE
SLP3-350-100-R	0.350" [8.9mm]	0.100" [2.5mm]	ROUND FACE

STANDARD TOLERANCE ( UNLESS OTHERWISE SPECIFIED )		 <b>BIVAR</b> <sup>®</sup> 4 THOMAS, IRVINE, CA. 92618 TEL: (949) 951-8808 FAX: (949) 951-3974	
DECIMALS	ANGULAR		
.X ± .1	X° ± 1°	 <b>TITLE:</b> LIGHT PIPE 90° VARIABLE CENTERLINE	
.XX ± .01			
.XXX ± .005			
DESIGNED: <b>Michael Chen</b>	DATE: <b>04/14/03</b>	<b>PART NO:</b> SLP3-XXX-XXX-X	REVISION: <b>G</b>
CHECKED: <b>D. Green</b>	DATE: <b>04/14/03</b>	<b>CAGE CODE : 32559</b>	<b>SHEET # 2 OF 3</b>
CAD GENERATED DOCUMENT, DO NOT MEASURE DRAWING.			

REV.	DESCRIPTION	DATE	APPROVED
	See Sheet #1		

### STANDARD OFFERING LIST

PART NUMBER	X DIMENSION	Y DIMENSION	FACE
SLP3-400-100-F	0.400"[10.2mm]	0.100" [2.5mm]	FLAT FACE
SLP3-400-100-R	0.400"[10.2mm]	0.100" [2.5mm]	ROUND FACE
SLP3-400-250-F	0.400"[10.2mm]	0.250"[6.4mm]	FLAT FACE
SLP3-400-450-R	0.400"[10.2mm]	0.450"[11.4mm]	ROUND FACE
SLP3-450-100-F	0.450"[11.4mm]	0.100" [2.5mm]	FLAT FACE
SLP3-450-100-R	0.450"[11.4mm]	0.100" [2.5mm]	ROUND FACE
SLP3-500-100-F	0.500"[12.7mm]	0.100" [2.5mm]	FLAT FACE
SLP3-500-100-R	0.500"[12.7mm]	0.100" [2.5mm]	ROUND FACE
SLP3-500-250-F	0.500"[12.7mm]	0.250"[6.4mm]	FLAT FACE
SLP3-500-250-R	0.500"[12.7mm]	0.250"[6.4mm]	ROUND FACE
SLP3-500-400-R	0.500"[12.7mm]	0.400"[10.2mm]	ROUND FACE
SLP3-500-450-R	0.500"[12.7mm]	0.450"[11.4mm]	ROUND FACE
SLP3-550-100-F	0.550"[14.00mm]	0.100" [2.5mm]	FLAT FACE
SLP3-550-100-R	0.550"[14.00mm]	0.100" [2.5mm]	ROUND FACE
SLP3-600-100-F	0.600"[15.2mm]	0.100" [2.5mm]	FLAT FACE
SLP3-600-100-R	0.600"[15.2mm]	0.100" [2.5mm]	ROUND FACE
SLP3-600-450-R	0.600"[15.2mm]	0.450"[11.4mm]	ROUND FACE
SLP3-650-100-F	0.650"[16.5mm]	0.100" [2.5mm]	FLAT FACE
SLP3-650-100-R	0.650"[16.5mm]	0.100" [2.5mm]	ROUND FACE
SLP3-700-100-F	0.700"[17.8mm]	0.100" [2.5mm]	FLAT FACE
SLP3-700-100-R	0.700"[17.8mm]	0.100" [2.5mm]	ROUND FACE
SLP3-700-450-R	0.700"[17.8mm]	0.450"[11.4mm]	ROUND FACE

STANDARD TOLERANCE ( UNLESS OTHERWISE SPECIFIED )		 <b>BIVAR</b> <sup>®</sup> 4 THOMAS, IRVINE, CA. 92618 TEL: (949) 951-8808 FAX: (949) 951-3974	
DECIMALS	ANGULAR		
.X ±.1	X° ± 1°	 <b>TITLE:</b> LIGHT PIPE 90° VARIABLE CENTERLINE	
.XX ± .01			
.XXX ± .005			
DESIGNED: <b>Michael Chen</b>	DATE: <b>04/14/03</b>	<b>PART NO:</b> SLP3-XXX-XXX-X	REVISION: <b>G</b>
CHECKED: <b>D. Green</b>	DATE: <b>04/14/03</b>	<b>CAGE CODE :</b> 32559	<b>SHEET #</b> 3 OF 3
CAD GENERATED DOCUMENT, DO NOT MEASURE DRAWING.			