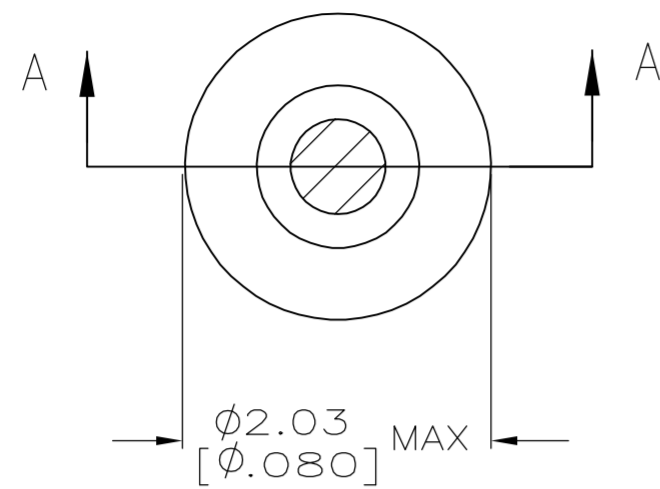
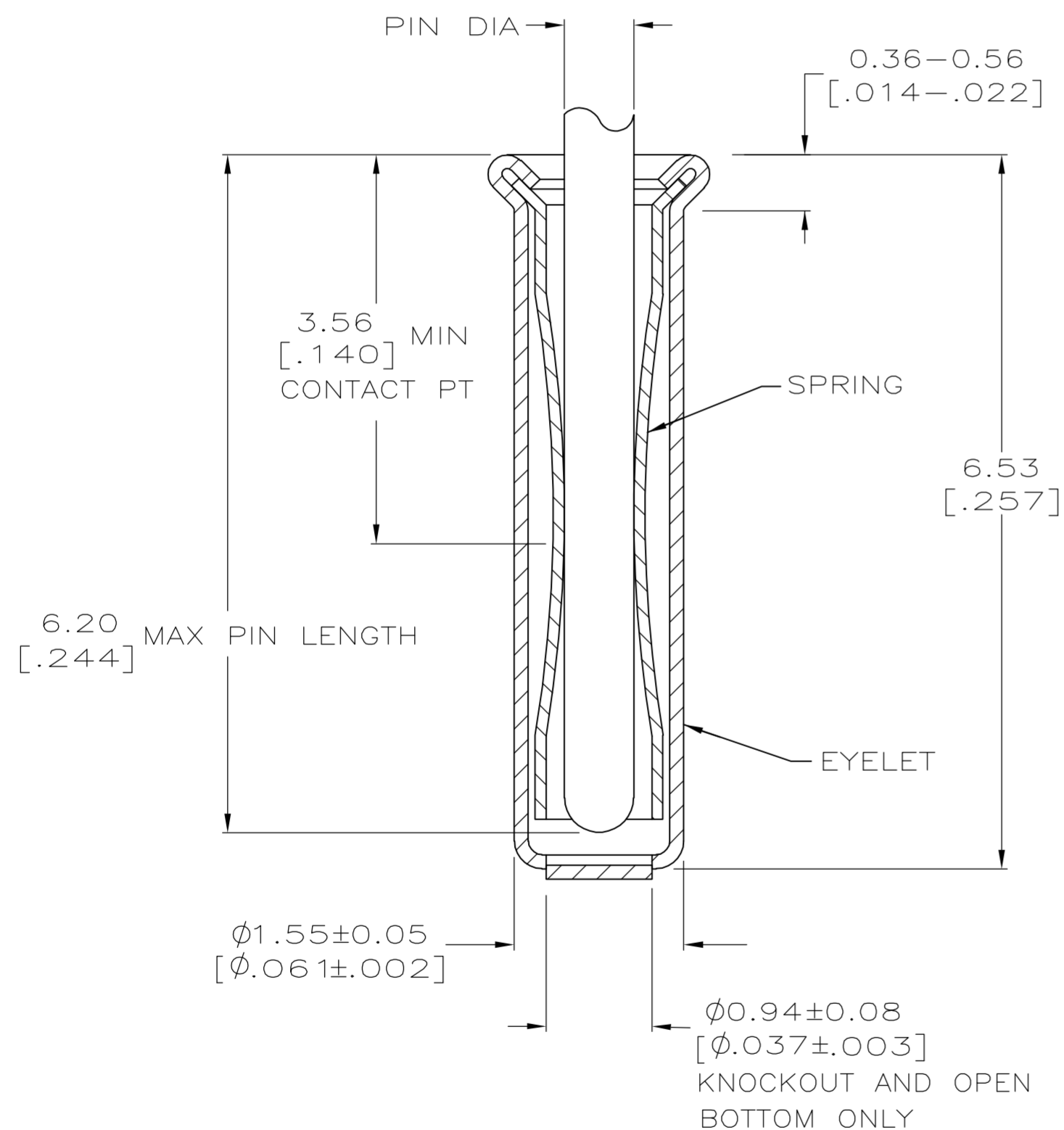


THIS DRAWING IS UNPUBLISHED. RELEASED FOR PUBLICATION
 © COPYRIGHT BY TYCO ELECTRONICS CORPORATION. ALL RIGHTS RESERVED.

LOC	DIST	REVISIONS			
P	LTR	DESCRIPTION	DATE	DWN	APVD
0		PER EC-0S11-0022-05	04-20-05	JA	JGH



- 1 TIN PLATE PER ASTM-B-545 0.00254 [.000100] MIN THK.
- 2 GOLD PER MIL-G-45204, TYPE II, 0.00076 [.000030] MIN THK OVER NICKEL PER QQ-N-290 0.00028 [.000011] MIN THK ON CONTACT AREA.
- 3. RECOMMENDED HOLE SIZE, PLATED OR UNPLATED:
 MACHINE INSERTION: $1.57 \begin{matrix} +0.10 \\ -0.08 \end{matrix} \begin{matrix} [.062 +.004 \\ -.003] \end{matrix}$
 HAND INSERTION: $1.60 \begin{matrix} +0.10 \\ -0.00 \end{matrix} \begin{matrix} [.063 +.004 \\ -.000] \end{matrix}$
- 4. APPLICATION TOOL PART NUMBER: MACHINE NO. 682127-4
 INSERTION HEAD NO. 682039-3
- 5 TO INSURE PROPER SPRING TENSION DO NOT EXCEED A 0.05 [.002] DIFFERENCE IN PIN DIA WHEN CHANGING TO A SMALLER PIN.
- 7. BOTTOM PLUG KNOCKOUT TOOL PART NUMBER 69729 WITH TIP PART NUMBER 69728-1.
- 5 SPRING: BERYLLIUM COPPER QQ-C-533
- 6 EYELET: COPPER QQ-C-576



SECTION A-A

OPEN	0.66-0.84 [.026-.033]	TIN	TIN	5050864-8
CLOSED		1	2	5050864-6
OPEN				5050864-5
CLOSED		5050864-1		
BOTTOM TYPE	RECOMMENDED PIN DIA	EYELET	SPRING	PART NO
		FINISH		

THIS DRAWING IS A CONTROLLED DOCUMENT.		DWN	J. ALCORTA - DOCK5	Tyco Electronics Corporation	
DIMENSIONS: mm [INCHES]		CHK	J. HAVENER	Harrisburg, Pa 17105-3608	
TOLERANCES UNLESS OTHERWISE SPECIFIED:		APVD	J. HAVENER	MINIATURE SPRING SOCKET ASSEMBLY SERIES 3	
0 PLC ± -		PRODUCT SPEC	108-14008	SIZE	A2
1 PLC ± -		APPLICATION SPEC	114-26000	CAGE CODE	00779
2 PLC ± -		WEIGHT	-	DRAWING NO	C=5050864
3 PLC ± 0.20 [.008]		FINISH	SEE TABLE	RESTRICTED TO	-
4 PLC ± -		CUSTOMER DRAWING			
ANGLES ± -		SCALE	20:1	SHEET	1 OF 1
FINISH		REV	0		