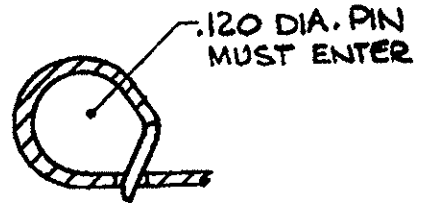
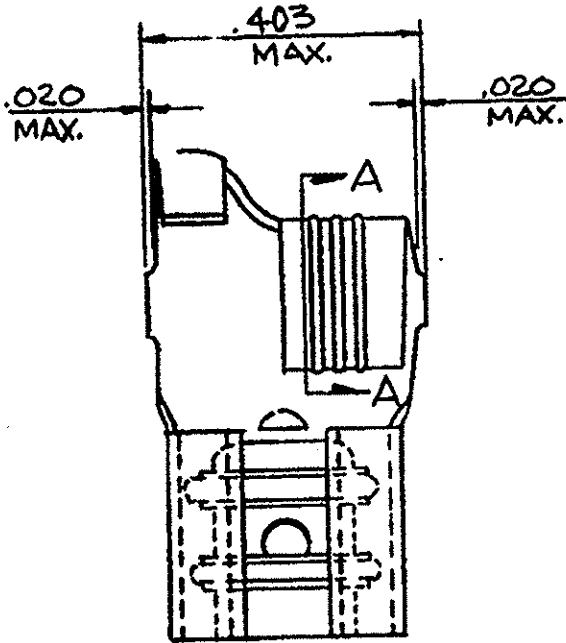


60583



SECT. A-A

- NOTES -

1- REFER TO PART # 42563 FOR ADDITIONAL INFORMATION.

② - #12 - #10 A.W.G., LIMITED TO 9,600 CIRCULAR MIL AREA.

WIRE RANGE	INSULATION RANGE	TAB THK ±.001	MATERIAL AND FINISH	COMBINATION NUMBER	REMARKS
12-10	.110 - .210	.032	.018 - PHOS. BRONZE - SILVER	60583-1(42563-6L.P.)	PRE-FORM
			.018 - BRASS - TIN	60583-2(42563-2L.P.)	PRE-FORM
②	.110 - .210	.032	.018 - BRASS - SILVER	60583-3(42563-3L.P.)	PRE-FORM
	.110 - .210	.032	.018 - BRASS - TIN	60583-4(42563-2L.P.)	NO PRE-FORM

③ FOREIGN PRODUCTION ONLY.

④ OBSOLETE

This terminal to be supplied in individual form, not as continuous strip.

S-26 - PRODUCT ENGINEERING

DIMENSIONS IN INCHES. DO NOT SCALE PRINT.

©1965 BY AMP INCORPORATED. ALL RIGHTS RESERVED. AMP PRODUCTS COVERED BY PATENTS AND/OR PATENTS PENDING.

CUSTOMER COPY REFERENCE ONLY

MATERIAL AND FINISH

AMP AMP INCORPORATED HARRISBURG, PENNA.

D REV 063A-0090-04 RF PD 3/1/65

C OBS-14-2 AF-2511 2/16/65

B OBS-3 AF-2511 2/16/65 JR 64 10/25/64

ADDED 60583-4 CEF CM 6/18/66

WIRE RANGE INSULATION TYPE

CLASS #
TYPE #

REVISION RECORD DR CHK DATE

TOLERANCE EXCEPT AS NOTED ± .018 ± 1°

SCALE 4-1

REV D 60583

EC S. J. 5/2/65
J. J. 5/2/65

NAME 250 SERIES FLAG FASTON RECEPTACLE