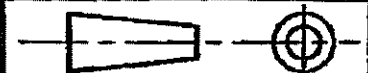


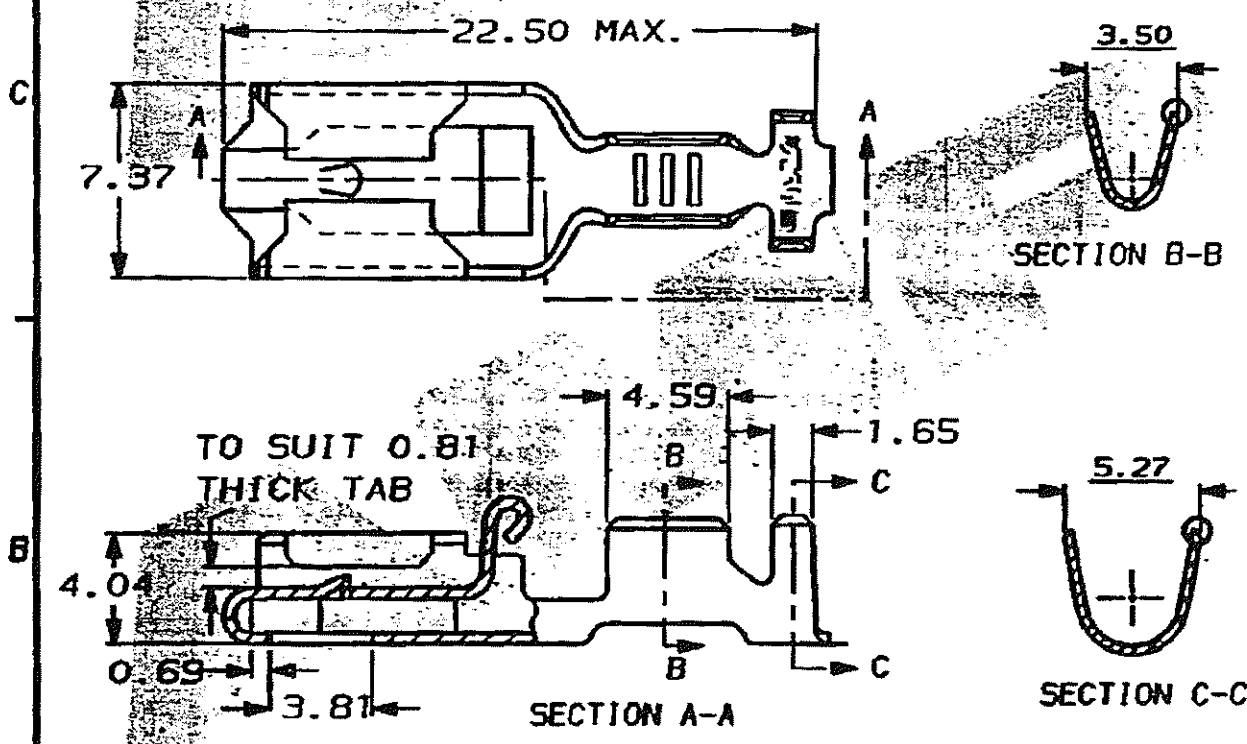
DO NOT SCALE

DIMENSIONS IN MM.



C.A.D. FILE CODE  
S. C154718.AD

PART NUMBER	MATERIAL	FINISH	REELING	LOOSE PIECE (REF. ONLY)
154718-1	BRASS	NONE	STANDARD	341002-1
154718-2	PHOS. BRONZE	NONE	STANDARD	341002-2
154718-3	BRASS	TIN	STANDARD	341002-3
154718-4	PHOS. BRONZE	TIN	STANDARD	341002-4
154718-5	PHOS. BRONZE	NONE	STANDARD	341002-5
154718-6	BRASS	PRE-TIN	STANDARD	341002-6
154718-7	PHOS. BRONZE	PRE-TIN	STANDARD	341002-7
154718-8	BRASS	SILVER	STANDARD	341002-8
154718-9	BRASS	SILVER	STANDARD	341002-9
<del>1-154718-0</del>	<del>BRASS</del>	<del>PRE-TIN</del>	<del>STANDARD</del>	<del>---</del>
<del>1-154718-1</del>	<del>BRASS</del>	<del>NONE</del>	<del>REV. REEL VERSION-0</del>	<del>---</del>
<del>1-154718-2</del>	<del>PHOS. BRONZE</del>	<del>NONE</del>	<del>REV. REEL VERSION-0</del>	<del>---</del>
<del>1-154718-3</del>	<del>PHOS. BRONZE</del>	<del>PRE-TIN</del>	<del>STANDARD</del>	<del>---</del>
1-154718-4	BRASS	TIN	REV. REEL VERSION-3	---
1-154718-5	PHOS. BRONZE	TIN	REV. REEL VERSION-4	---



WIRE RANGE 0.7 TO 2.0mm<sup>2</sup>

INSULATION RANGE 2.4 TO 3.2mm DIA.

**CUSTOMER DWG**  
FOR REFERENCE ONLY

© COPYRIGHT 1974 BY AMP OF GREAT BRITAIN LTD.  
ALL INTERNATIONAL RIGHTS RESERVED. ALL PRODUCTS  
MAY BE COVERED BY BRITISH AND FOREIGN PATENTS AND/OR PATENTS PENDING.

RELEASED FOR PUBLICATION  
ORIGINAL 1974

-	-	-	-
-	-	-	-
-	-	-	-
-	-	-	-
-	-	-	-
AD	EBD0-0317-03	RS	16/9/03
AC	REDRAWN ON CAD	CSB24	27.11.91
REV	APPROVED	ECH	DATE

TOLEANCES  
UNLESS OTHERWISE  
STATED  
DEC ± 0.5  
ANGLES ± 1°

DR. D.A. BARRATT 27.11.91  
CPL. D. TERRY APP. D.A. BARRATT  
**AMP** TERMINAL HOUSE  
of Great Britain Ltd. STANNING  
MIDD.

**POSITIVE LOCK RECEPTACLE**

SCALE	LOC	SIZE	DWG. No.	REV	SHEET
4/1	E	A4	C154718	AD	1/1