

PCB TERMINAL BLOCKS

PCB
TERMINAL
BLOCKS

INTER-
CONNECTION

FUSES &
FUSE-
HOLDERS

LEDs &
INDICATORS

MINIATURE
SWITCHES

LIMIT &
SAFETY
SWITCHES

CONTROL
PRODUCTS

INTERFACE
MODULES &
SUPPORTS


RELAY
BASES

ENCLOSURES

BATTERIES

TRANS-
FORMERS

5mm Pitch 36 Pole Rising Clamp Terminal Blocks

- Unique 36 pole strips
- Easily cut to required number of poles
- Can be supplied pre-cut
- Anti solder wicking
- Moulded in grey UL94-V0 flame retardant PC
- Professional rising clamp terminals
- 0.2-4.0mm² (30-12AWG) solid cable
- 0.2-2.5mm² (30-12AWG) stranded cable
- Guided pin alignment
- Captive screw
-  approved

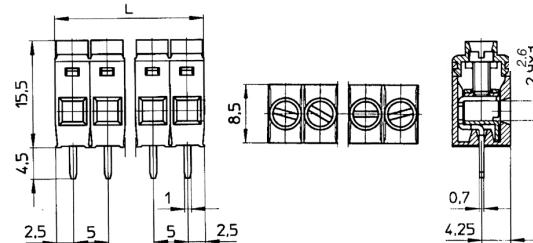
CTB7000




TYPE NO.	POLES	LENGTH
CTB7000/1	1	5mm
CTB7000/2	2	10mm
CTB7000/3	3	15mm
CTB7000/4	4	20mm
CTB7000/5	5	25mm
CTB7000/6	6	30mm
CTB7000/7	7	35mm
CTB7000/8	8	40mm
CTB7000/9	9	45mm
CTB7000/10	10	50mm
CTB7000/11	11	55mm
CTB7000/12	12	60mm
CTB7000/18	18	90mm
CTB7000/36	36	180mm

SPECIFICATION

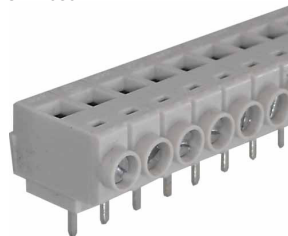
Rating	22A/250V UL=16A/300V, VDE&IMQ=22A/450V
Dielectric strength	≥2.5kV
Impulse withstand voltage	4kV
Working temperature	85°C
Moulding	UL94-V0 flame retardant PC
Pin/terminal	Tinned, nickel plated brass
Rising clamp	Nickel plated brass
Screw/torque	M2.5 steel zinc plated, 0.5Nm
Recommended PCB hole size	ø1.3mm



5mm Pitch 36 Pole 90° Rising Clamp Terminal Blocks

- Unique 36 pole strips
- Easily cut to required number of poles
- Can be supplied pre-cut
- Anti solder wicking
- Moulded in grey UL94-V0 flame retardant PC
- Professional rising clamp terminals
- 0.2-4.0mm² (30-12AWG) solid cable
- 0.2-2.5mm² (30-12AWG) stranded cable
- Guided pin alignment
- Captive screw
-  approved

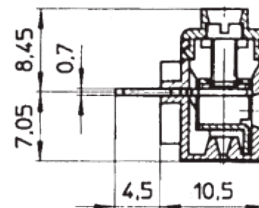
CTB7050



TYPE NO.	POLES	LENGTH
CTB7050/1	1	5mm
CTB7050/2	2	10mm
CTB7050/3	3	15mm
CTB7050/4	4	20mm
CTB7050/5	5	25mm
CTB7050/6	6	30mm
CTB7050/7	7	35mm
CTB7050/8	8	40mm
CTB7050/9	9	45mm
CTB7050/10	10	50mm
CTB7050/11	11	55mm
CTB7050/12	12	60mm
CTB7050/18	18	90mm
CTB7050/36	36	180mm

SPECIFICATION

Rating	22A/250V UL=16A/300V, VDE&IMQ=22A/450V
Dielectric strength	≥2.5kV
Impulse withstand voltage	4kV
Working temperature	85°C
Moulding	UL94-V0 flame retardant PC
Pin/terminal	Tinned, nickel plated brass
Rising clamp	Tinned, nickel plated brass
Screw/torque	M2.5 steel zinc plated, 0.5Nm
Recommended PCB hole size	ø1.3mm



For other dimensions see CTB7000