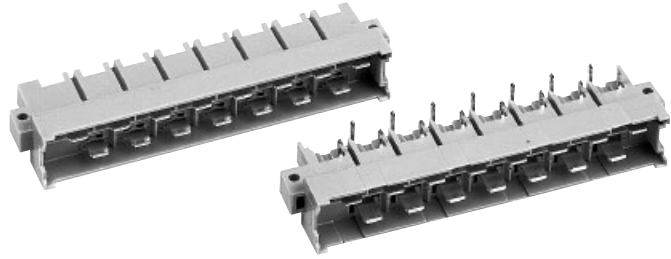


Number of contacts

# 15



Male connectors

Identification	Number of contacts	Part No.	Drawing	Dimensions in mm
Male connector for faston 6.3 x 2.5	15	Performance level 1 acc. to IEC 60603-2 09 06 015 2912 <sup>1)</sup>	<p>Contact arrangement View from termination side</p> <p>Board drillings</p>	
1 leading contact (position z 32)	14 + 1	09 06 015 2931 <sup>1)</sup>		
2 leading contacts (position z 4 + z 32)	13 + 2	09 06 015 2922 <sup>1)</sup>		
Male connector with angled solder pins <sup>3)</sup>	15	09 06 115 2911 <sup>1)</sup> 09 06 115 2911 222 <sup>1)</sup>	<p>Contact arrangement View from termination side</p> <p>Board drillings</p>	
1 leading contact (position z 32)	14 + 1	09 06 115 2932 <sup>1)</sup> 09 06 115 2932 222 <sup>1)</sup>		
2 leading contacts (position z 4 + z 32)	13 + 2	09 06 115 2921 <sup>1)</sup> 09 06 115 2991 <sup>2)</sup>		
Male connector with straight solder pins	15	09 06 015 2913 <sup>1)</sup>	<p>Contact arrangement View from termination side</p> <p>Board drillings</p>	
1 leading contact (position z 32)	14 + 1	09 06 015 2914 <sup>1)</sup>		

DIN Power up to 15 A

<sup>1)</sup> Variant with silver plated contacts  
<sup>2)</sup> Variant with gold plated contacts  
<sup>3)</sup> With shroud coding, see chapter 00

<sup>0)</sup> Railway classification NFF 16-101, Smoke index: F1, Flammability class: I2