

Customer Information Sheet

DRAWING No.: D01-997XXXX

SHEET 2 OF 2

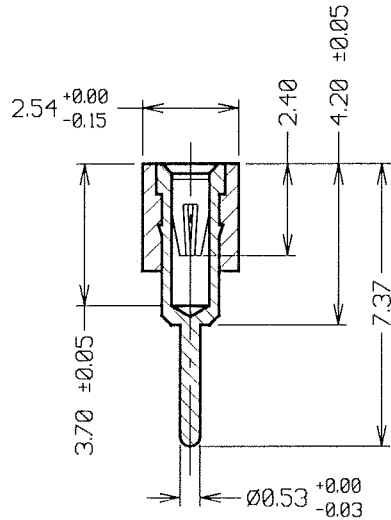
IF IN DOUBT - ASK

©

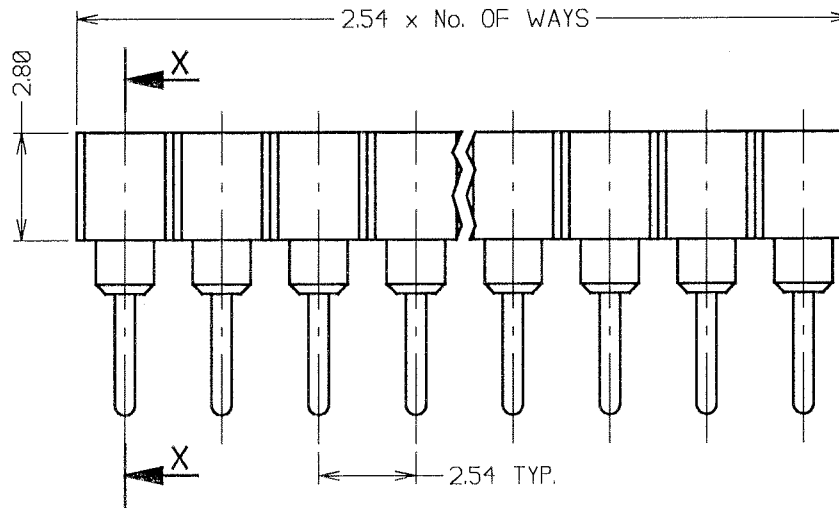
NOT TO SCALE

THIRD ANGLE PROJECTION

ALL DIMENSIONS IN mm



SECTION X-X



SPECIFICATION.

MATERIAL:

- CARRIER = (FOR 01 & 21 FINISHES)
GLASS FILLED PBT, BLACK, UL94V-0
- CARRIER = (FOR 42 FINISH)
GLASS FILLED PCT, BLACK, UL94V-0
- SHELL = BRASS
- CONTACT = BERYLLIUM COPPER

FINISH:

- 01 = 90/10 TIN/LEAD SHELL, GOLD CLIP
- 21 = 90/10 TIN/LEAD SHELL, GOLD FLASH CLIP
- 42 = 100% TIN SHELL, GOLD CLIP

ELECTRICAL:

- CURRENT RATING = 1A
- VOLTAGE RATING = 100V AC, 150V DC
- CONTACT RESISTANCE = 10 MILLIOHMS MAX.
- INSULATION RESISTANCE = 10000 MEGOHMS MIN.
- DIELECTRIC WITHSTANDING = 1000V AC MIN.

MECHANICAL:

- INSERTION FORCE (Ø0.46mm GAUGE) = 1.8N
- WITHDRAWAL FORCE (Ø0.46mm GAUGE) = 1.0N
- DURABILITY = 500 CYCLES MIN.

ENVIRONMENTAL:

- TEMPERATURE RANGE = -55 TO +125°C

NOTES.

1. RECOMMENDED PCB SIZE = 1.4-2.0mm.
2. RECOMMENDED PIN SIZE = Ø0.40-0.56mm.
3. RECOMMENDED PCB HOLE SIZE = Ø0.8mm.

ORDER CODE:	
D01-997XXXX	
No. OF WAYS	
1 TO 32, 48 & 64	
FINISH	
01 = TIN/LEAD SHELL, GOLD CLIP	
21 = TIN/LEAD SHELL, GOLD FLASH CLIP	
42 = 100% TIN SHELL, GOLD CLIP	

JMB	7	09.08.05	8672
NAME	ISS.	DATE	C/NOTE
APPROVED: <i>[Signature]</i>			
CHECKED: <i>[Signature]</i>			
DRAWN:		D. BECK	
CUSTOMER REF.:			
ASSEMBLY DRG:			

HARWIN

THIS DRAWING AND ANY INFORMATION OR DESCRIPTIVE MATTER SET OUT HEREON ARE CONFIDENTIAL AND COPYRIGHT PROPERTY OF THE HARWIN GROUP AND MUST NOT BE DISCLOSED, LOANED, COPIED OR USED FOR MANUFACTURING, TENDERING OR FOR ANY OTHER PURPOSE WITHOUT THEIR WRITTEN PERMISSION.

TOLERANCES
 X - ±1mm
 X.X - ±0.25mm
 X.XX - ±0.10mm
 X.XXX - ±0.01mm
 ANGLES = ±5°
 UNLESS STATED

MATERIAL:
 SEE ABOVE
FINISH: SEE ABOVE
S/AREA: mm²

TITLE:
 SIL THROUGH SOCKET CONNECTOR

DRAWING NUMBER:
 D01-997XXXX

HARWIN USA TEL: 603 893 5376 FAX: 603 893 5396 mjs@harwin.com	HARWIN Europe (UK) TEL: 023 9231 4545 FAX: 023 9231 4590 mjs@harwin.co.uk	HARWIN Asia TEL: +65 6 779 4909 FAX: +65 6 779 3868 mjs@harwin.com.sg
--	--	--