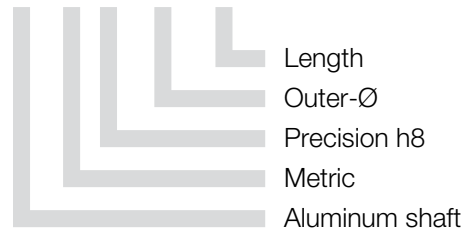


Precision Aluminum Shafts



Order key

AWMP-06-...



- The recommended shaft material for all linear bearings made from iglidur® J and iglidur® J200
- Material: EN AW 6061/6060
- Straightness: EN 754-3
- Hardness: 75 HB
- Surface: hartanodisiert
- Surface hardness: 450–550 HV
- Inch-dimensions on request

Please remember that this is a technical surface. Small colour variations are possible due to variable coating depths.

Dimensions [mm]

Part number	Version	Outer diameter	ø Tolerance	Insulation thickness	Inner diameter	Max. length	Weight [kg/m]
AWMP-06	solid shaft	6	h8	–	–	3,000	0.08
AWMP-08	solid shaft	8	h8	–	–	3,000	0.14
AWMP-10	solid shaft	10	h8	–	–	3,000	0.22
AWMP-12	solid shaft	12	h8	–	–	3,000	0.32
AWMP-16	solid shaft	16	h8	–	–	3,000	0.56
AWMP-20	solid shaft	20	h8	–	–	3,000	0.88
AWMR-20	hollow shaft	20	h9	2	16	3,000	0.32
AWMP-25	solid shaft	25	h8	–	–	3,000	1.37
AWMR-25	hollow shaft	25	h9	3	19	3,000	0.59
AWMP-30	hollow shaft	30	h8	7.5	15	3,000	1.48
AWMP-40	hollow shaft	40	h8	10	20	3,000	2.63
AWMP-50	hollow shaft	50	h8	11	28	3,000	3.75

Order example: AWMP-12-500 corresponds to a precision aluminum shaft Ø 12 mm, 500 mm in length.

Order example: AWMP-30-2,000 corresponds to an aluminum hollow shaft Ø 30 mm, 2,000 mm in length.



delivery available
time from stock



prices price list online
www.igus.co.uk/shafts



order part number
example AWMP-06

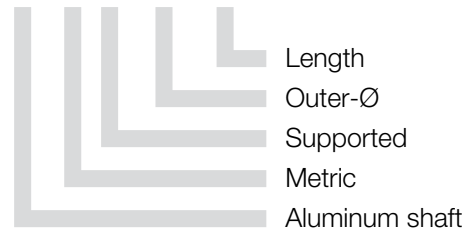
DryLin® Shafts | Product Range

Supported Aluminum Shaft



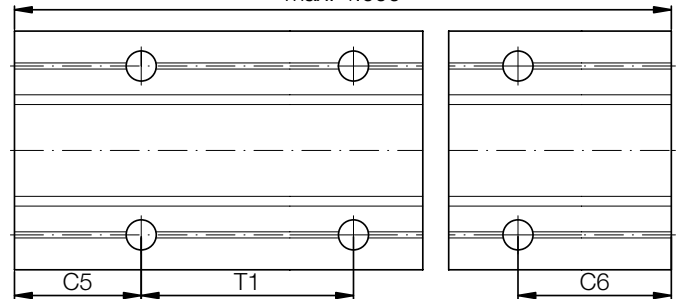
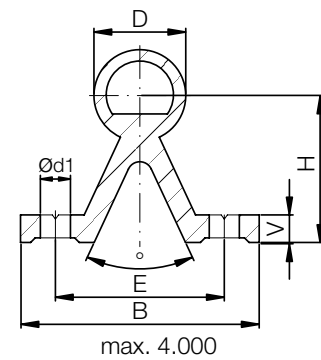
Order key

AWMU-12-...



- Material: EN AW 6061/6060
- Straightness: DIN 12020
- Hardness: 75 HB
- Surface: hartanodisiert
- Surface hardness: 450-550 HV
- Hole pitches symmetrical C5 = C6

Please remember that this is a technical surface. Small colour variations are possible due to variable coating depths.



Dimensions [mm]

Part number	D	B	H	V	d1	(°)	E	T1	C5/C6		Max. length	Weight [kg/m]
	-0.1		±0.25				±0.25		min.	max.		
AWMU-12	12	40	22	5	4.5	50	29	75	20	57	4,000	0.75
AWMU-16	16	45	26	5	5.5	50	33	100	20	69	4,000	1.00
AWMU-20	20	52	32	6	6.6	50	37	100	20	69	4,000	1.42
AWMU-25	25	57	36	6	6.6	50	42	120	20	79	4,000	1.81
AWMU-30	30	69	42	7	9.0	50	51	150	20	94	4,000	2.69
AWMU-40*	40	73	50	8	9.0	50	55	200	20	119	4,000	4.06

Order example: AWMU-16-500 corresponds to a supported aluminum shaft Ø 16 mm, 500 mm in length.

* Tolerance for shaft diameter D is -0.15.



delivery available from stock



prices price list online
www.igus.co.uk/shafts



order part number
example AWMU-12