

Customer Information Sheet

DRAWING No.: M22-636XXXX

SHEET 3 OF 3

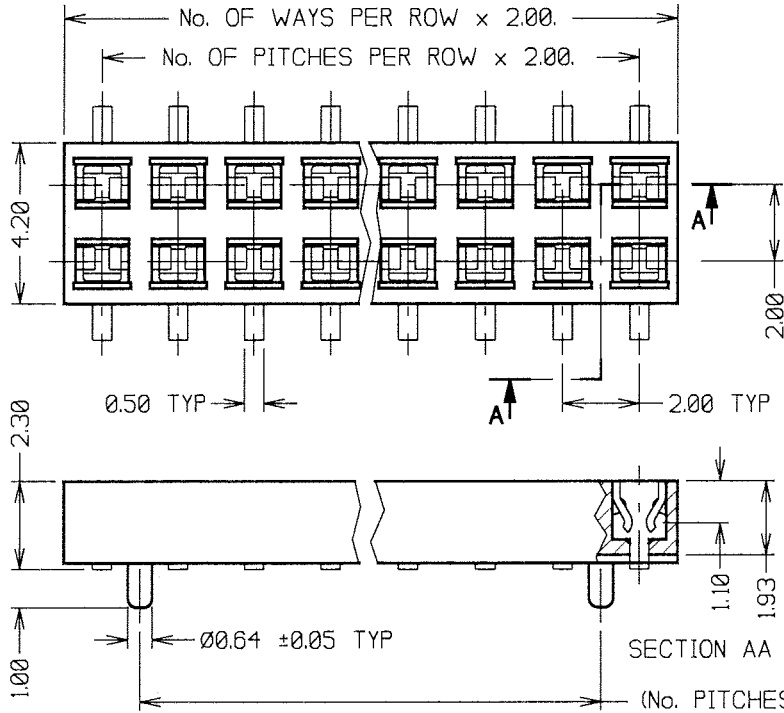
IF IN DOUBT - ASK

©

NOT TO SCALE

THIRD ANGLE PROJECTION

ALL DIMENSIONS IN mm



SPECIFICATIONS:

MATERIAL:
 MOULDING - 30% GLASS FILLED NYLON-6T UL94V-0
 CONTACTS - PHOSPHOR BRONZE

FINISH:
 42 - 0.02-0.08 μ GOLD ON CONTACT AREA,
 2.5-3.8 μ 100% TIN ON TAILS
 46 - 2.5-3.8 μ 100% TIN

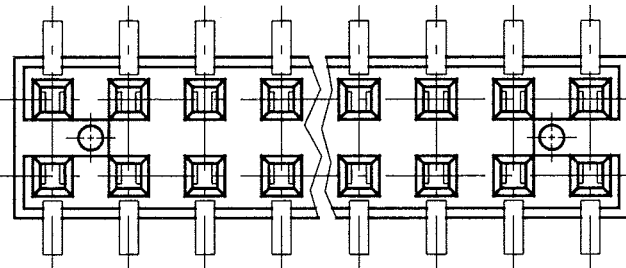
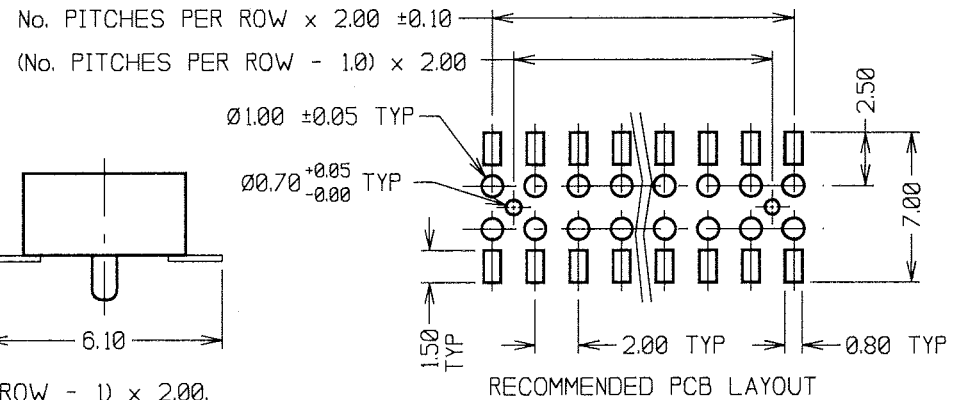
ELECTRICAL:
 CURRENT RATING - 15 AMPS
 CONTACT RESISTANCE - 20 MILLIOHMS MAX
 INSULATION RESISTANCE - 1000 MEGOHMS MIN
 DIELECTRIC WITHSTANDING - 500V AC MIN

MECHANICAL:
 CONTACT RETENTION - 4.9N MIN
 INSERTION FORCE - 2.00N MAX
 WITHDRAWAL FORCE - 0.30 MIN

ENVIRONMENTAL:
 TEMPERATURE RANGE -
 -55°C TO +105°C

PACKING:
 TUBE

FOR COMPLETE SPECIFICATION, SEE
 COMPONENT SPECIFICATION C0818X
 (LATEST ISSUE).



NOTES:
 1. ALL TOLERANCES
 ARE ± 0.20 UNLESS
 OTHERWISE STATED.

ORDER CODE:

M22-636XXXX

No. OF WAYS PER ROW
 03 - 32

FINISH:
 42 - SELECTIVE GOLD + 100% TIN
 46 - 100% TIN

JMB	7	23.06.06	9286
NAME	ISS.	DATE	C/NOTE
APPROVED:			
CHECKED:			
DRAWN:	D. BECK		
CUSTOMER REF.:			
ASSEMBLY DRG.:			

HARWIN

HARWIN USA
 TEL: 603 893 5376
 FAX: 603 893 5396
 mis@harwin.com

HARWIN Europe (UK)
 TEL: 023 9231 4545
 FAX: 023 9231 4590
 mis@harwin.co.uk

HARWIN Asia
 TEL: +65 6 779 4909
 FAX: +65 6 779 3868
 mis@harwin.com.sg

THIS DRAWING AND ANY
 INFORMATION OR DESCRIPTIVE
 MATTER SET OUT HEREON ARE
 CONFIDENTIAL AND COPYRIGHT
 PROPERTY OF THE HARWIN
 GROUP AND MUST NOT BE
 DISCLOSED, LOANED, COPIED,
 OR USED FOR MANUFACTURING,
 TENDERING OR FOR ANY
 OTHER PURPOSE WITHOUT
 THEIR WRITTEN PERMISSION.

TOLERANCES
 X. - ± 1.0 mm
 X.X - ± 0.25 mm
 X.XX - ± 0.10 mm
 X.XXX - ± 0.01 mm
 ANGLES = $\pm 5^\circ$
 UNLESS STATED

MATERIAL:
 SEE ABOVE

FINISH:
 SEE ABOVE

S/AREA:
 mm²

TITLE:
 2mm PITCH DIL SMT VERTICAL
 LOW-PROFILE SOCKET ASSY

DRAWING NUMBER:
M22-636XXXX

SHT
 3
 OF
 3