

FFC/FPC Connectors Double-Bottom Contacts

0.50/1.00mm Pitch

Molex's FFC/FPC connectors with double the contacts per circuit offer the best combination of signal reliability, compactness, wide circuit size range and cable style choices of any similar version in the market

Features and Benefits

Contact design with two lower contacts per circuit	Ensures a clean mating interface and provides superior contact reliability
Cable ear-tab locking feature	Provides cable alignment, high retention force and easy actuation
Zero insertion force	Facilitates easy cable insertion
Wide range of circuit sizes (4-80)	Offers design flexibility
Vacuum pick-and-place area on top of housing	Provides easier board assembly and cost savings versus separate pick-and-place tape

Applications

Automobile Infotainment

- Display Audio
- Car Navigation

Consumer

- Flat Panel TV
- Portable Game
- Personal Navigation Equipment

Datacommunications

- Optical Disk Drives
- Tablet and Notebook PCs
- Printers and Copiers



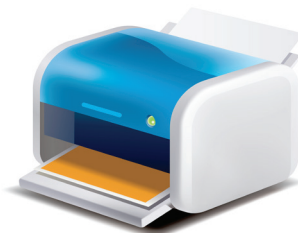
Flat Panel TV



Automobile Infotainment

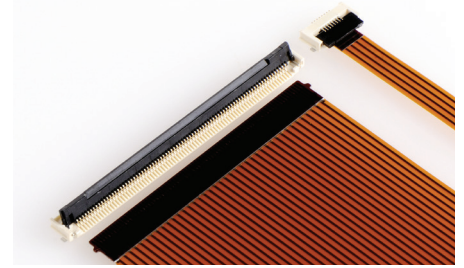


Optical Disk Drives

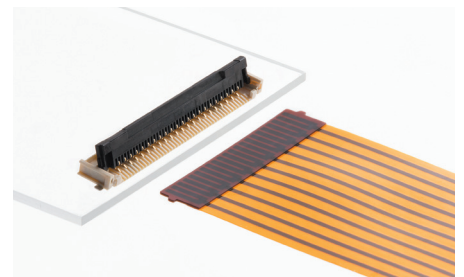


Printer

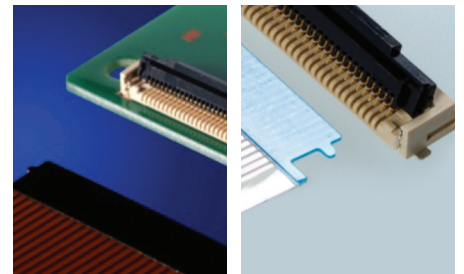
molex[®]



0.50mm Pitch
Standard Cable Type, 1.90mm Height (FD19)
(505110 Series)

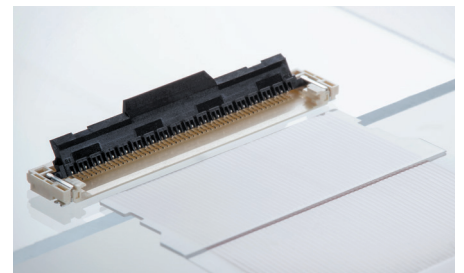


1.00mm Pitch
Standard Cable Type, 1.90mm Height (FD19)
(200528 Series)



0.50mm Pitch
Standard Cable Type
2.50mm Height
(502790 Series)

0.50mm Pitch
Non-standard Cable Type
2.50mm Height
(104060 Series)



0.50mm Pitch
Notched Cable Type, 0.50mm Height
(104234 Series)

FFC/FPC Connectors Double-Bottom Contacts

0.50/1.00mm Pitch



Specification

REFERENCE INFORMATION

Packaging: Embossed tape
Designed In: Millimeters
RoHS: Yes
Halogen Free: Low Halogen

MECHANICAL

Durability (min.): 25 cycles

ELECTRICAL

Voltage (max.): 50V
Current (max.): 0.5A
Contact Resistance: 40 milliohms max.
Dielectric Withstanding Voltage:
200528/505110/502790: 125V AC (rms)
104060/104234: 250V AC (rms)
Insulation Resistance: 50 Megohm min.

PHYSICAL

Housing: LCP (Beige); 104234 Series (Natural)
Actuator: Polyamide Glass Filled (Black)
Terminal: Phosphor Bronze
Fitting Nail: Phosphor Bronze

PLATING

Contact Area: Separated Gold
Solder Tail Area: Separated Gold
Underplating: Nickel
Operating Temperature:
505110-**96: -40 to +125°C
200528/505110/502790: -40 to +105°C
104060/104234: -20 to +85°C

Ordering Information

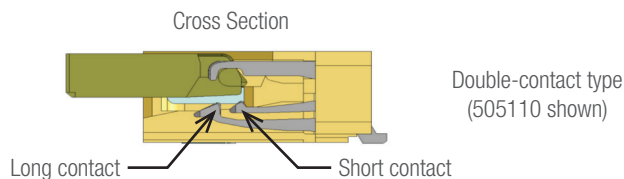
Order No.	Pitch (mm)	Mated Height (mm)	Mated Depth (mm)	Cable Type	Circuit Size	Operating Temperature
200528-0**0 (FD19)	1.00	1.90	5.30mm	Standard	04-19, 17,22	-40 to +105°C
505110-**96 (FD19)	0.50	1.90		Standard	20,22, 24, 26, 28, 30, 35, 40, 45, 50, 60, 64, 68, 70, 80	-40 to +125°C
505110-**91 (FD19)		1.90		Standard	20,22, 24, 26, 28, 30, 35, 40, 45, 50, 60, 64, 68, 70, 80	-40 to +105°C
505110-**92 (FD19)		1.90		Standard	04-19	-40 to +105°C
502790-**91		2.50		Standard	30, 40, 50, 60, 64, 80	-20 to +85°C
104060-**17		2.50		Non-standard	20, 60, 80	-20 to +85°C
104234-**17		1.50		Notched	51	-20 to +85°C

(Replace ** with circuit size)

Additional Product Features

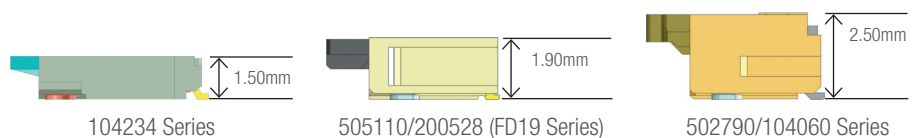
Double-Bottom-Contact Terminal Design

The double-bottom-contact terminal design (right) removes dust and contaminants better than single-bottom-contact terminals, while providing stable redundant contact forces for secure electrical reliability.



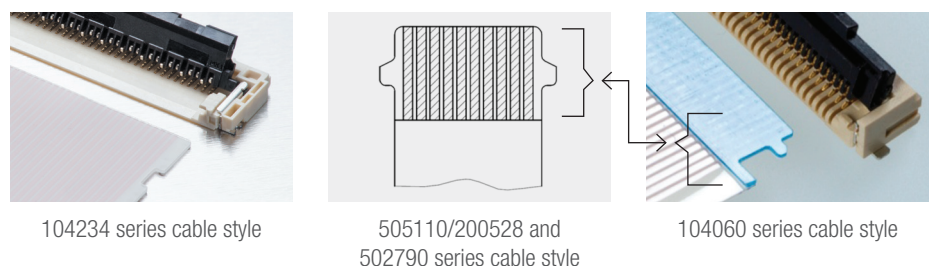
Ultra-Low-Profile Feature

Various profile heights to meet different design requirements.



Cable Locking Features

Various cable locking features to meet different design requirements.



www.molex.com/product/smt_ffc-fpc.html