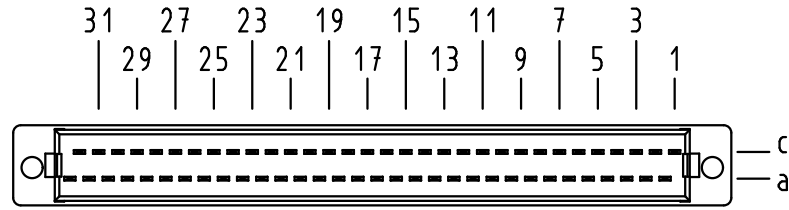


Y Kontaktanordnung
contact arrangement

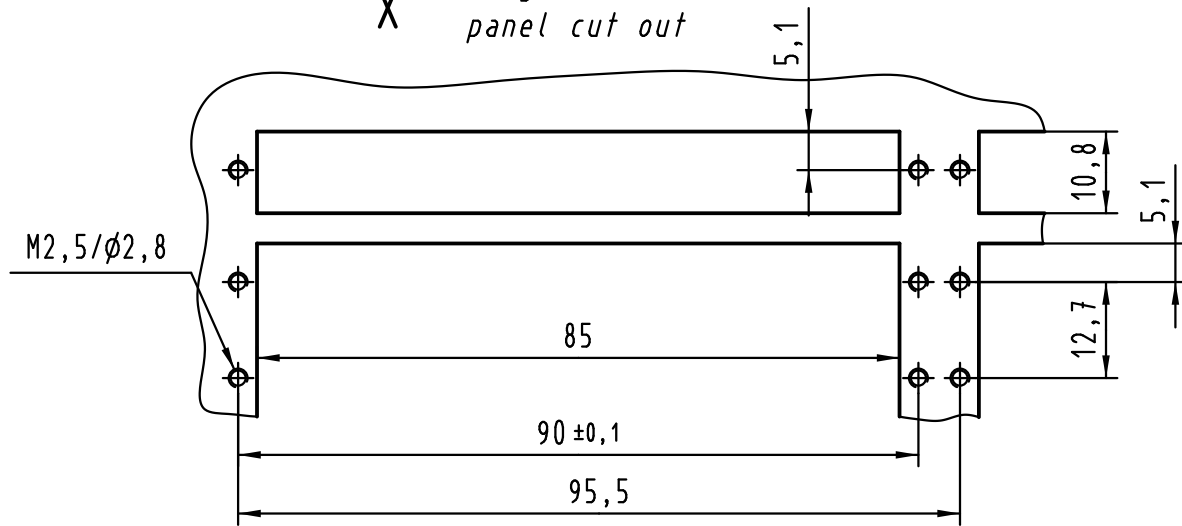


64 Kontakte
64 contacts

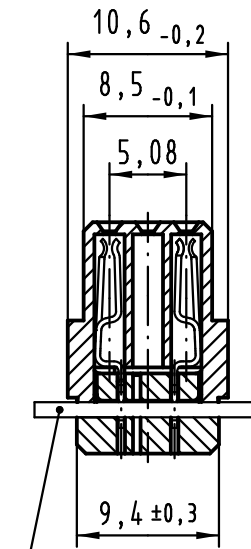
■ = Kontaktposition belegt
= position with contact

□ = Kontaktposition nicht belegt
= position without contact

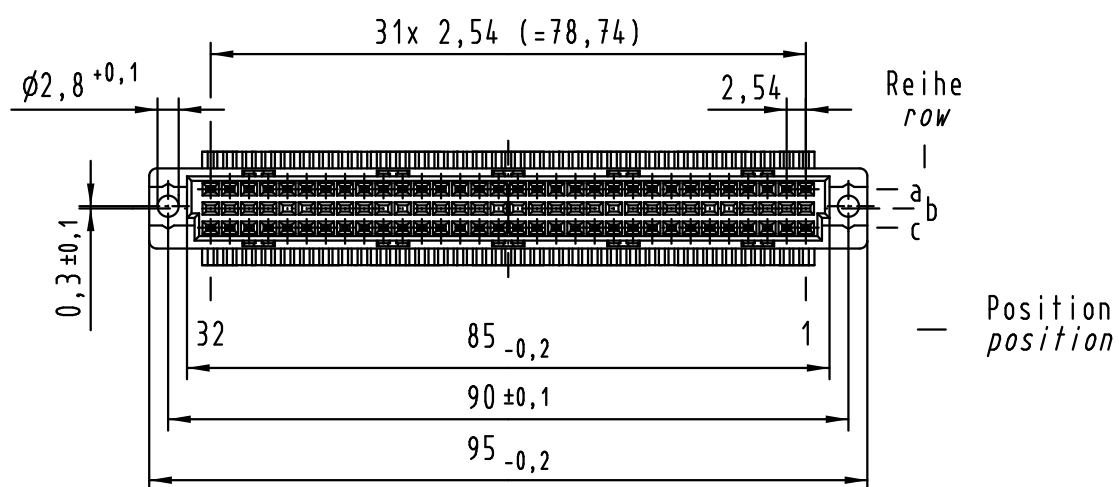
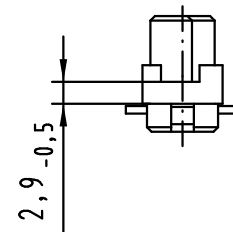
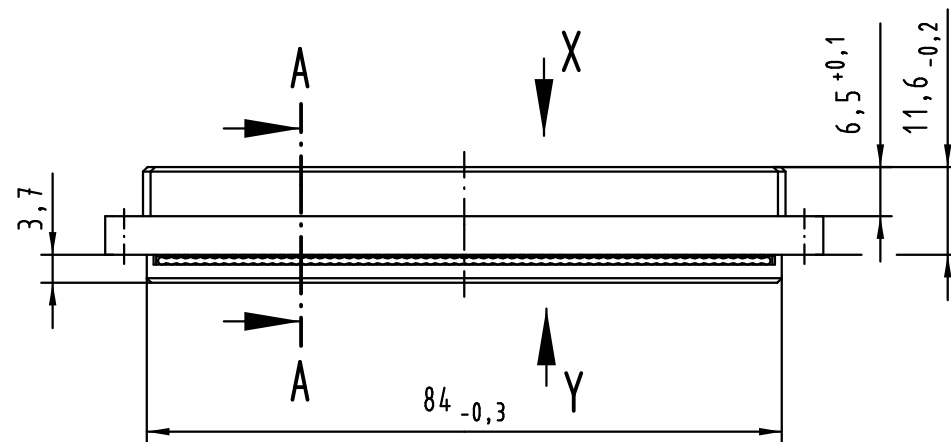
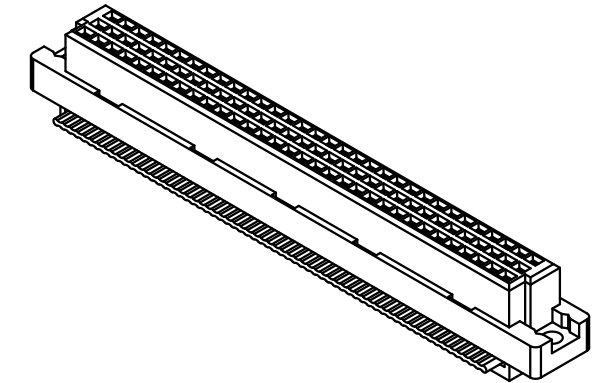
X Montageausschnitt
panel cut out



A-A (2:1)



Flachleitung AWG 28/7
Raster 1,27mm
(gehört nicht zum Lieferumfang)
flat cable AWG 28/7
pitch 1,27mm
(is not in scope of delivery)



Ader 1 des Flachkabels auf Kontakt 1c
lead number 1 of flat cable on contact 1c

09 03 264 7828	3	Au über/over Ni
09 03 264 6828	2	Au über/over Ni
-	-	-
Bestell-Nr. part-no.	Anforderungsstufe nach IEC performance level acc.to IEC	Kontaktoberfläche contact plating

All Dimensions in mm Original Size DIN A 3			Techn. Character.			Nicht tolerierte Maß/Free size tolerances IEC 60603-2			
			Dat. Name		Maßstab/Scale		Typ C Federleiste mit Schneidklemmen, 64-polig type C female connector with insulation displacement, 64-pole		
			Detail. 15.01.08 LehT		1:1				
			Insp. 15.01.08 mte						
			Stand.						
36419	03.08.11	LehT	HARTING Electronics GmbH & Co. KG D-32339 ESPELKAMP					TB 09 03 264 x828	
35521	22.06.09	LehT						Blatt/page	
34876									
Mod.	Dat.	Name							