



ESTM SL

mm

Pillow Block Bearings

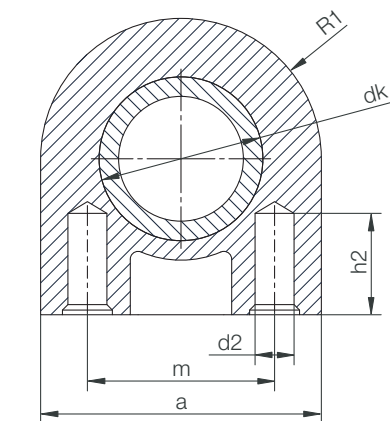
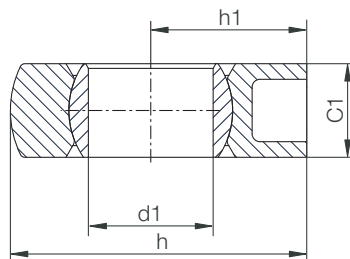
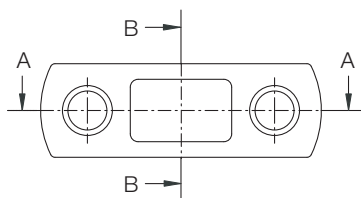
Phone +44 (0) 16 04 - 67 72 40

Fax +44 (0) 16 04 - 67 72 45

igus® UK Ltd.

Internet [www.igus.co.uk](http://www.igus.co.uk)

E-mail [sales@igus.co.uk](mailto:sales@igus.co.uk)



Data in mm

Structure – part no.

E ST M-05 SL



**Material**

Housing: igumid G

► Page 70.6

Spherical Bearing:

iglidur® J

► Chapter 3

**Special Properties**

- light weight
- extremely space saving
- screwed in base
- low cost
- predictable lifetime
- maintenance- and lubricant-free
- with M3-part No., e.g. ESTM-10-SL-M3
- for spax screw with outer diameter 3,5 mm

**Load Data**

igubal® Pillow Block Bearing ESTM-SL

Part Number	max. radial tensile strength		max. radial compressive strength		max. lateral strength		max. axial strength	
	short term	long term	short term	long term	short term	long term	short term	long term
	[N]	[N]	[N]	[N]	[N]	[N]	[N]	[N]
ESTM-05 SL	1500	750	1400	700	900	450	150	75
ESTM-06 SL	1500	750	1400	700	900	450	150	75
ESTM-08 SL	1600	800	1400	700	950	475	100	50
ESTM-10 SL	1600	800	1400	700	1000	500	100	50

**Dimensions [mm]**

igubal® Pillow Block Bearing ESTM-SL

Part Number	d1 (H10)	d2	dk	h	h1	h2	a	m	C1	R1	Max. Pivot Angle
ESTM-05 SL	5,0	2,5	8,9	18,0	10,0	6,5	16,0	10,0	6,0	8,0	17°
ESTM-06 SL	6,0	2,5	8,9	18,0	10,0	6,5	16,0	10,0	6,0	8,0	17°
ESTM-08 SL	8,0	2,5	10,5	19,0	10,0	6,5	18,0	12,0	6,0	9,0	17°
ESTM-10 SL	10,0	2,5	12,4	20,0	10,0	6,5	20,0	14,0	6,0	10,0	17°