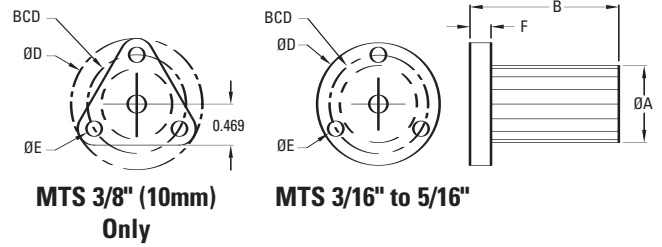


## Flange Mount Supernuts®

MTS



### Integral Flange Mount

The MTS models provide the excellent lubricity and dimensional stability of our proprietary Acetal with the convenience of an integral flange.

MTS

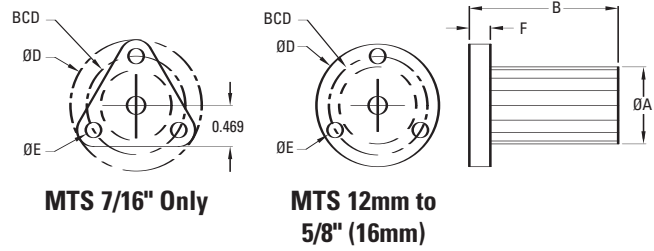
3/16" to 3/8" (10mm) Diameter

Dia.	Lead	Part No.	Supernut® Dimensions						Design Load	Efficiency %	Drag Torque oz-in
			A	B	D	E	F	BCD			
3/16"	0.050	<b>MTS1820</b>	0.50	0.75	1.00	0.14	0.15	0.75	10 lbs	49	Free Wheeling
1/4"	0.050	<b>MTS2520</b>	0.50	0.75	1.00	0.14	0.15	0.75	25 lbs	41	
	0.063	<b>MTS2516</b>								48	
	0.250	<b>MTS4-2516</b>								76	
	0.500	<b>MTS7-2514</b>								81	
5/16"	0.083	<b>MTS3112</b>	0.50	0.75	1.00	0.14	0.15	0.75	50 lbs	49	
	0.167	<b>MTS2-3112</b>								65	
	0.250	<b>MTS2-3108</b>								72	
	0.500	<b>MTS4-3108</b>								80	
3/8"*	0.063	<b>MTS3716</b>	0.71	1.50	1.5	0.20	0.20	1.125	60 lbs	36	
	2mm	<b>MTS37x2M</b>								42	
	0.083	<b>MTS3712</b>								44	
	0.100	<b>MTS3710</b>								49	
	0.125	<b>MTS3708</b>								53	
	0.167	<b>MTS2-3712</b>								60	
	0.200	<b>MTS2-3710</b>								65	
	0.250	<b>MTS2-3708</b>								68	
	0.375	<b>MTS4-3711</b>								75	
	0.500	<b>MTS4-3708</b>								79	
	1.000	<b>MTS5-3705</b>								82	
	1.200	<b>MTS5-3704</b>								82	
10mm*	2mm	<b>MTS10x2M</b>	0.71	1.50	1.5	0.2	0.200	1.125	75 lbs	41	
	3mm	<b>MTS10x3M</b>								53	
	5mm	<b>MTS2-10x2.5M</b>								64	
	6mm	<b>MTS4-10x1.5M</b>								67	
	10mm	<b>MTS5-10x2M</b>								76	
	20mm	<b>MTS6-10x3.3M</b>								81	
	35mm	<b>MTS10-10x3.5M</b>								81	

\* 3/8" and 10mm with tri-flange

# Flange Mount Supernuts®

MTS



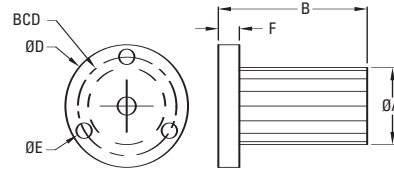
MTS  
7/16" to 5/8" (16mm) Diameter

Dia.	Lead	Part No.	Supernut® Dimensions						Design Load	Efficiency %	Drag Torque oz-in
			A	B	D	E	F	BCD			
7/16**	0.125	<b>MTS2-4316</b>	0.71	1.50	1.5	0.20	0.200	1.125	75 lbs	55	Free Wheeling
	0.250	<b>MTS2-4308</b>								65	
	0.500	<b>MTS4-4308</b>								76	
12mm	3mm	<b>MTS12x3M</b>	0.75	1.50	1.5	0.20	0.250	1.125	125 lbs	48	
	4mm	<b>MTS2-12x2M</b>								54	
	5mm	<b>MTS2-12x2.5M</b>								59	
	6mm	<b>MTS3-12x2M</b>								63	
	10mm	<b>MTS4-12x2.5M</b>								73	
	15mm	<b>MTS6-12x2.5M</b>								78	
	25mm	<b>MTS10-12x2.5M</b>								82	
45mm	<b>MTS15-12x3M</b>	81									
1/2"	0.0625	<b>MTS5016</b>	0.75	1.50	1.5	0.20	0.250	1.125	125 lbs	30	
	0.100	<b>MTS5010</b>								41	
	0.200	<b>MTS2-5010</b>								57	
	0.250	<b>MTS2-5008</b>								62	
	0.500	<b>MTS4-5008</b>								75	
	0.800	<b>MTS8-5010</b>								80	
5/8"	0.100	<b>MTS6210</b>	0.88	1.63	1.5	0.20	0.300	1.188	175 lbs	35	
	0.125	<b>MTS6208</b>								40	
	4mm	<b>MTS62x4M</b>								46	
	0.200	<b>MTS2-6210</b>								51	
	0.250	<b>MTS2-6208</b>								57	
	0.500	<b>MTS4-6208</b>								71	
16mm	4mm	<b>MTS16x4M</b>	0.88	1.63	1.5	0.20	0.300	1.188	175 lbs	47	
	5mm	<b>MTS2-16x2.5M</b>								52	
	8mm	<b>MTS4-16x2M</b>								63	
	16mm	<b>MTS7-16x2.3M</b>								75	
	25mm	<b>MTS5-16x5M</b>								80	
	35mm	<b>MTS7-16x5M</b>								82	

\* 7/16" with tri-flange

## Flange Mount Supernuts®

MTS



MTS 3/4" (20mm)

MTS

3/4" (20mm) Diameter

Dia.	Lead	Part No.	Supernut® Dimensions						Design Load	Efficiency %	Drag Torque oz-in
			A	B	D	E	F	BCD			
3/4"	0.100	<b>MTS7510</b>	1.125	1.75	2.0	0.20	0.300	1.438	275 lbs	31	Free Wheeling
	0.125	<b>MTS7508</b>								36	
	0.167	<b>MTS7506</b>								44	
	0.200	<b>MTS7505</b>								49	
	0.500	<b>MTS5-7510</b>								69	
	1.000	<b>MTS8-7508</b>								79	
	2.000	<b>MTS10-7505</b>								82	
20mm	4mm	<b>MTS20x4M</b>	1.125	1.75	2.0	0.20	0.300	1.438	275 lbs	42	Free Wheeling
	8mm	<b>MTS2-20x4M</b>								59	
	12mm	<b>MTS3-20x4M</b>								67	
	16mm	<b>MTS4-20x4M</b>								72	
	20mm	<b>MTS5-20x4M</b>								76	
	45mm	<b>MTS9-20x5M</b>								82	