

1

2

3

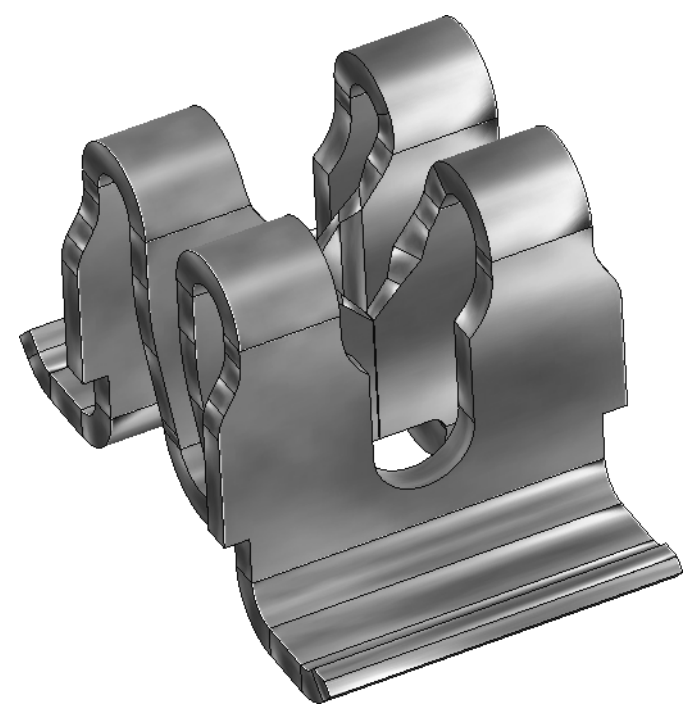
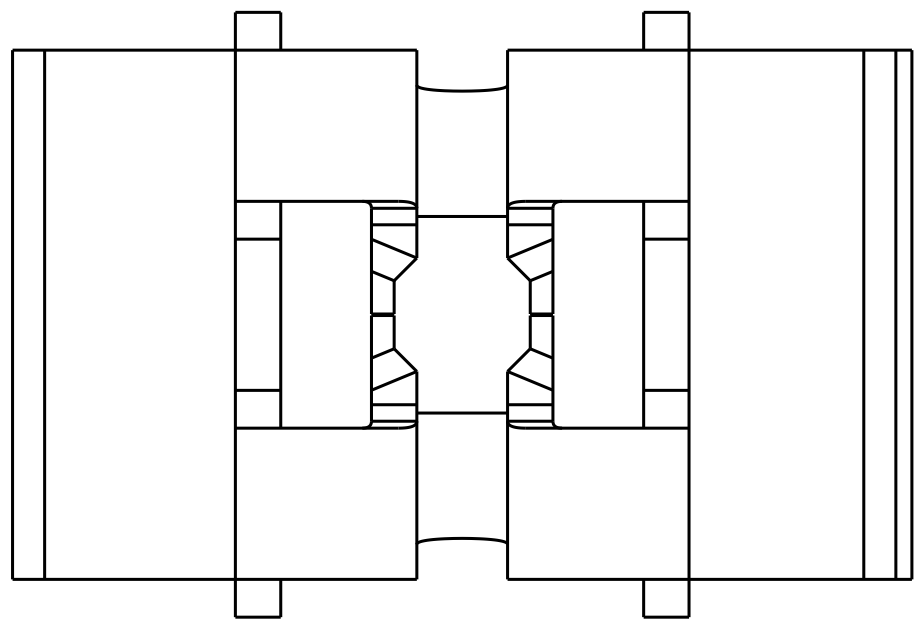
4

A

A

B

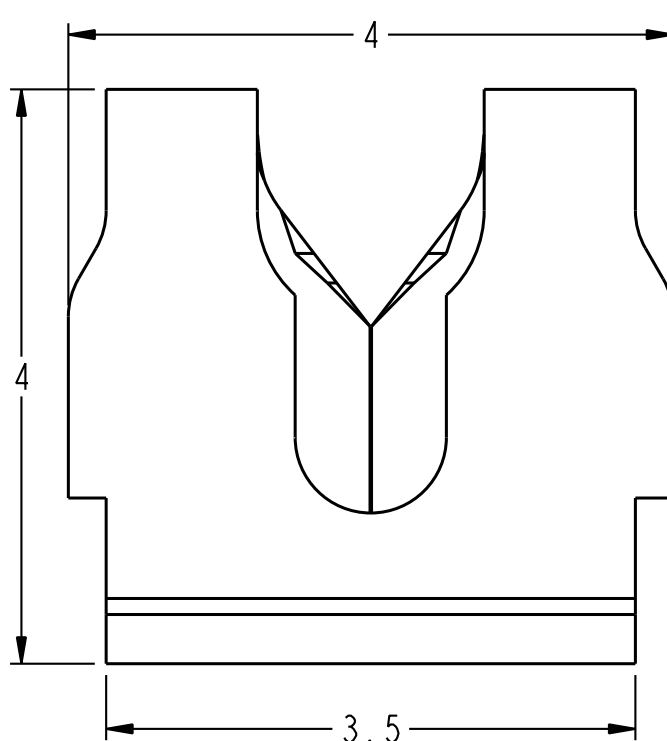
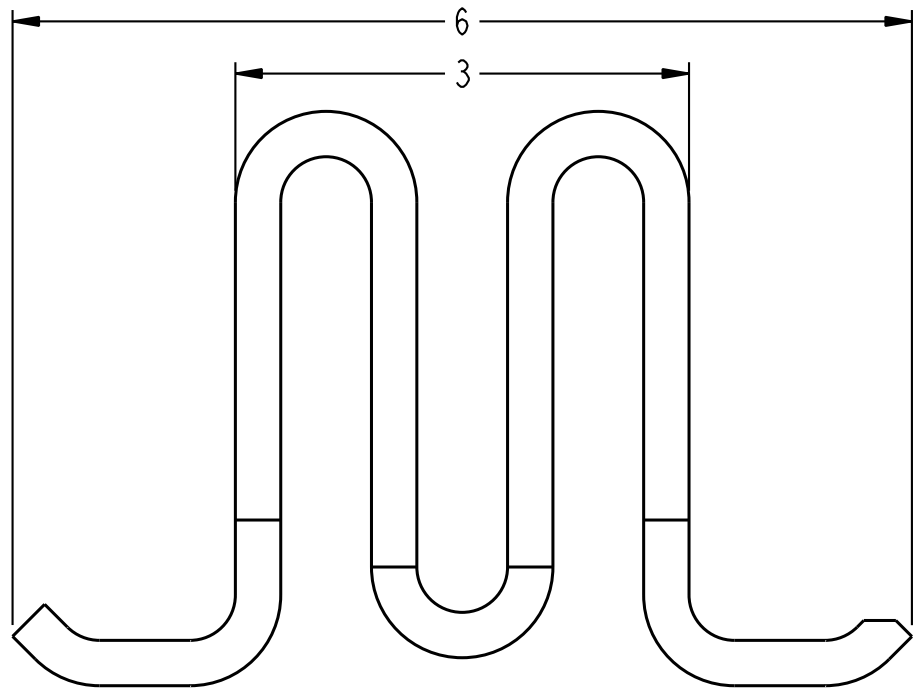
B



SCALE 15:1

C

C



SCALE 20:1

PART NUMBER	QUANTITY	DESCRIPTION	NOTES
-10ITRLF	1,200	TAPE & REEL	14
-60ILF	6	ON CARRIER	11 13
-50ILF	5	ON CARRIER	11 13
-40ILF	4	ON CARRIER	11 13
-30ILF	3	ON CARRIER	11 13
-20ILF	2	ON CARRIER	11 13
-10ILF	1	SINGULATED	10
-00ILF	7,500	ON REEL	9

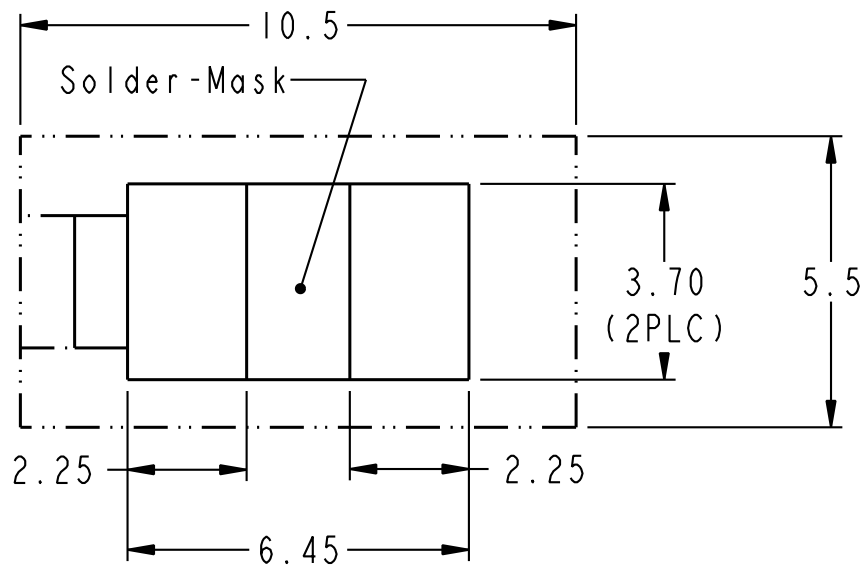


Copyright FCI.

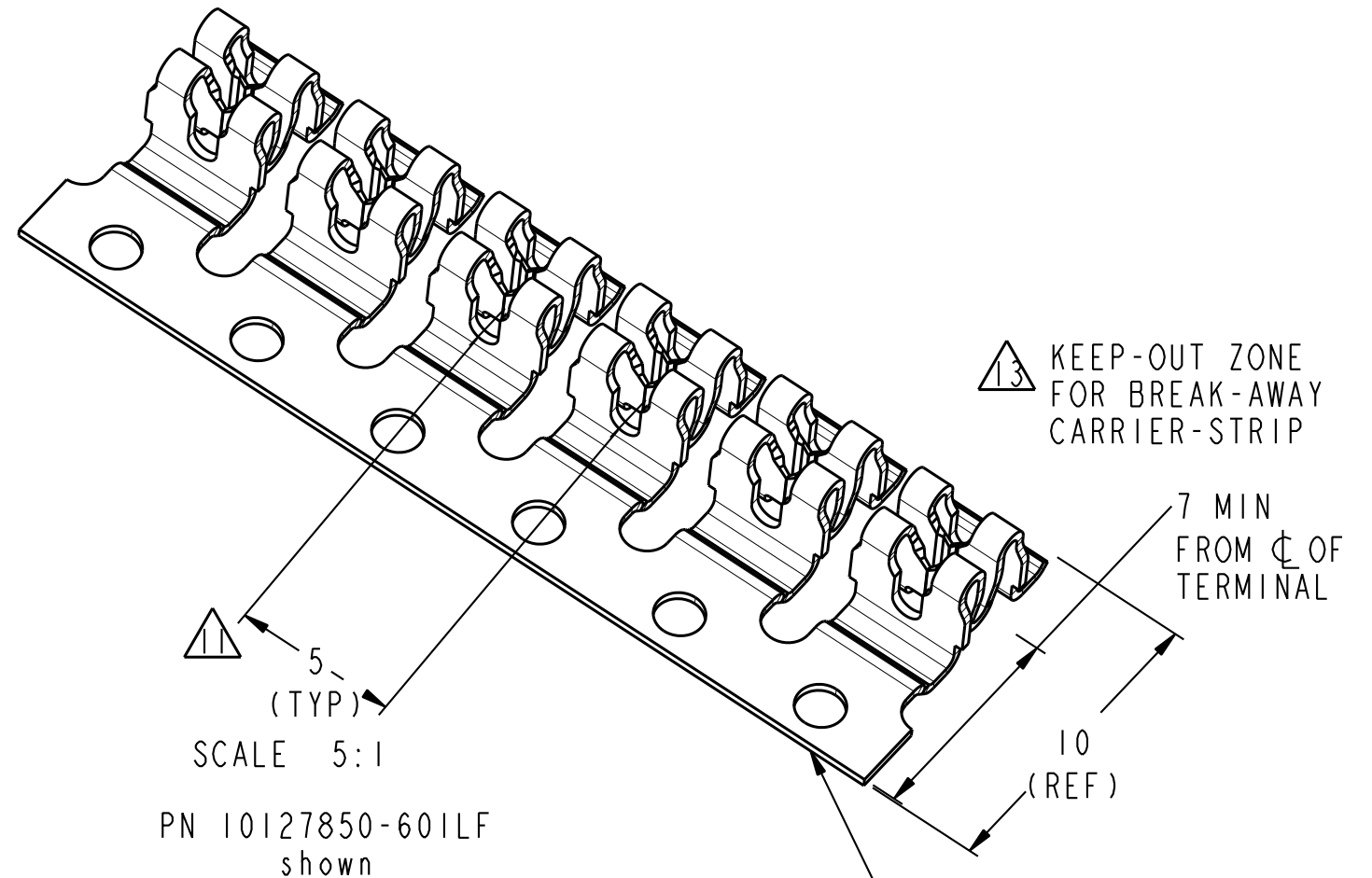
D

D

spec ref	-	dr	James Sabo	2014/03/17	projection	mm	size	A3	scale	10:1
tolerance std	ISO 406 ISO 1101	eng	James Sabo	2015/04/13			ecn no	-	rel level Released	
TOLERANCES UNLESS OTHERWISE SPECIFIED		chr	-	-			product family	-		
surface	ISO 1302	appr	R Marshall	2015/04/13			dwg no	10127850C	rev	A
linear	0.X ±0.3 0.XX ±0.05 0.XXX ±0.025	www.fci.com		cat. no.	-	Product - Customer Drw		sheet 1 of 3		
angular	0° ±2°									



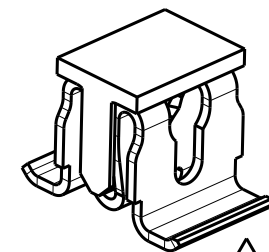
△12 RECOMMENDED SOLDER-PAD FOOTPRINT AND KEEP-OUT ZONE FOR WIRE INSTALLATION TOOL.



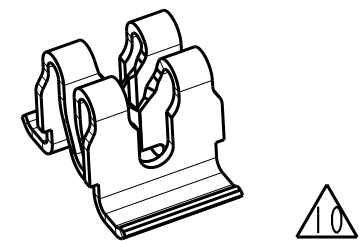
BREAK-AWAY CARRIER STRIP. REMOVE AFTER SOLDER REFLOW PROCESS.

1. CONNECTOR MATERIAL: COPPER ALLOY
2. PLATING: TIN OVER NICKEL.
3. PRODUCT SPECIFICATION: GS-12-1234.
4. PACKAGING MEETS GS-14-920 LEAD-FREE LABELING SPECIFICATION.
5. PRODUCT MARKING: N/A
6. MINIMUM CENTERLINE SPACING BETWEEN ADJACENT TERMINALS IS 5MM.
7. WIRE INSERTION TOOL REQUIRES KEEP-OUT ZONE AS SHOWN.
8. LEAD-FREE PRODUCT MEETS THE EUROPEAN UNION DIRECTIVES & OTHER COUNTRY REGULATIONS AS DESCRIBED IN GS-22-008.

- △9 AVAILABLE ON 24 INCH REEL, QUANTITY 7500 PER REEL.
- △10 AVAILABLE LOOSE-IN-BAG. PACKAGE QUANTITY 1000 PER BAG.
- △11 AVAILABLE IN SETS OF TWO TO SIX TERMINALS ON BREAK-AWAY CARRIERS. PACKAGE QUANTITY 100 SETS PER BAG.
- △12 RECOMMENDED KEEP-OUT ZONE FOR WIRE-INSTALLATION TOOL.
- △13 RECOMMENDED KEEP-OUT ZONE FOR TERMINALS ON CARRIER.
- △14 AVAILABLE WITH PICK & PLACE CAPS ON 13 INCH DIAMETER REEL, QUANTITY 1,200 PER REEL.



SCALE 5:1
PN 10127850-10ITRLF shown



SCALE 5:1
PN 10127850-10ILF shown

spec ref	-	dr	James Sabo	2014/03/17	projection	mm	size	A3	scale	10:1
tolerance std	ISO 406 ISO 1101	eng	James Sabo	2015/04/13			ecn no	-	rel level	Released
TOLERANCES UNLESS OTHERWISE SPECIFIED		chr	-	-						
surface	ISO 1302	appr	R Marshall	2015/04/13	product family	-	-		rev	A
	linear	0.X	±0.3		TERMINAL, GRIPLET,™ SMT		dwg no	10127850C		-
		0.XX	±0.05		20-32AWG					
	angular	0°	±2°		cat. no.					
www.fci.com					Product - Customer Drw		sheet 2 of 3			

