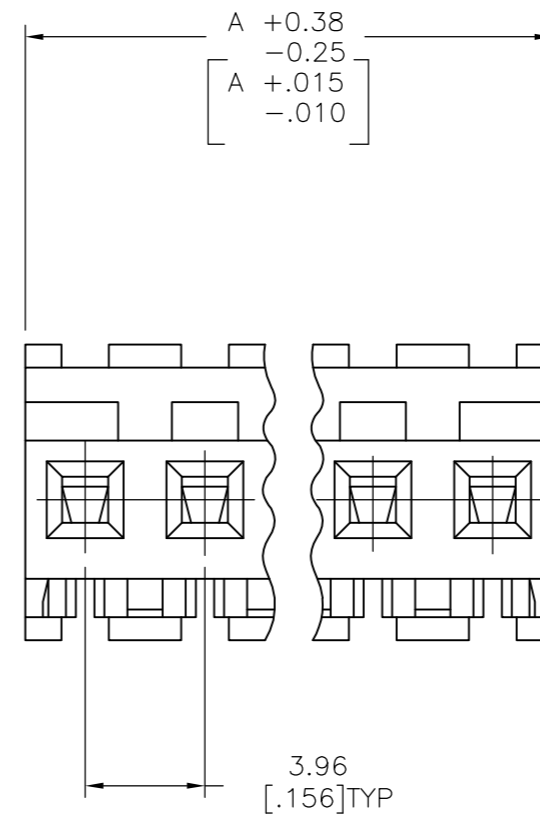
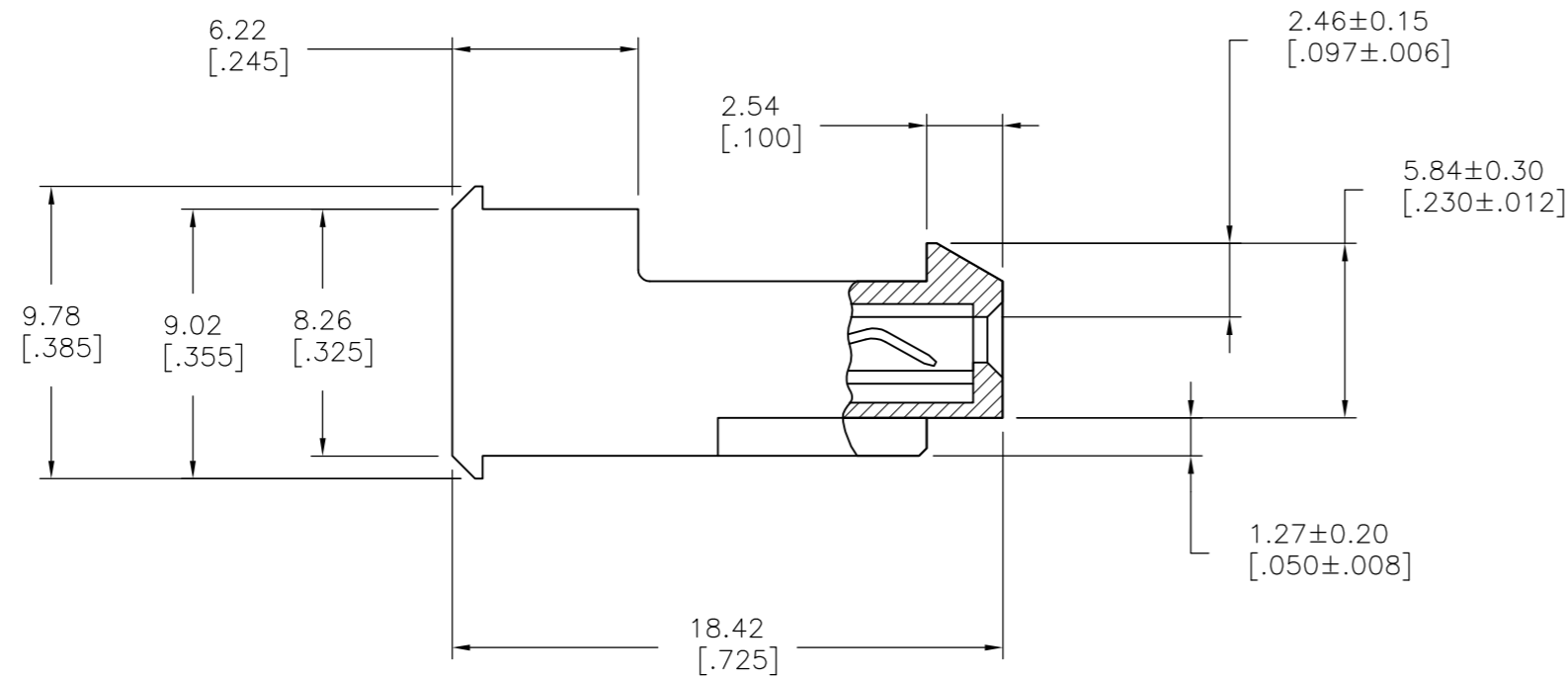
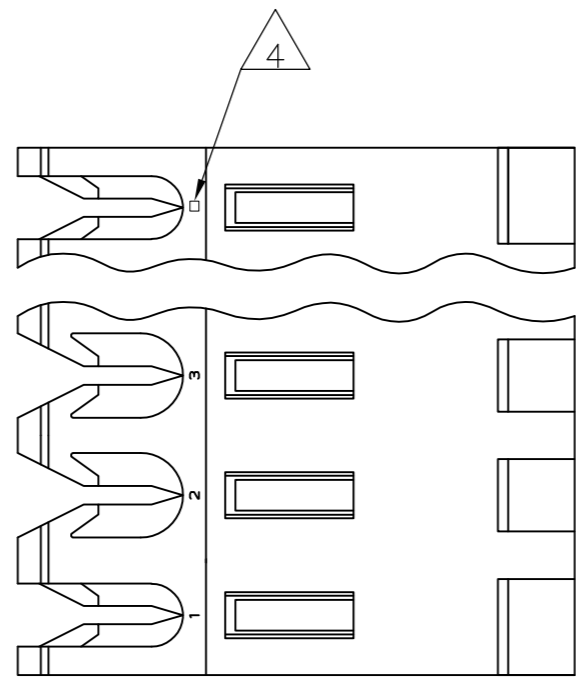


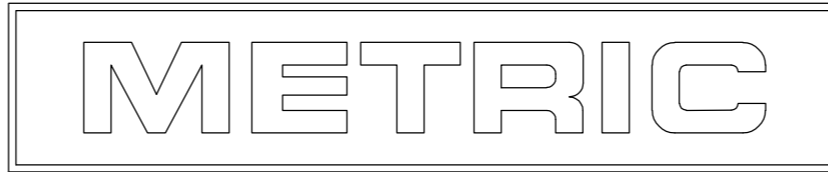
THIS DRAWING IS UNPUBLISHED. RELEASED FOR PUBLICATION
 © COPYRIGHT - By - ALL RIGHTS RESERVED.

LOC	DIST	REVISIONS					
CM	00	P	LTR	DESCRIPTION	DATE	DWN	APVD
		S2		REVISED PER ECO-11-004587	11MAR11	RK	HMR



95.10[3.744]	24	5-640599-4	
91.13[3.588]	23	5-640599-3	
87.17[3.432]	22	5-640599-2	
83.21[3.276]	21	5-640599-1	
79.25[3.120]	20	5-640599-0	
75.29[2.964]	19	4-640599-9	
71.32[2.808]	18	4-640599-8	
67.36[2.652]	17	4-640599-7	
63.40[2.496]	16	4-640599-6	
59.44[2.340]	15	4-640599-5	
55.47[2.184]	14	4-640599-4	
51.51[2.028]	13	4-640599-3	
47.55[1.872]	12	4-640599-2	
43.59[1.716]	11	4-640599-1	
39.62[1.560]	10	4-640599-0	
35.66[1.404]	9	3-640599-9	
31.70[1.248]	8	3-640599-8	
27.74[1.092]	7	3-640599-7	
23.77[.936]	6	3-640599-6	
19.81[.780]	5	3-640599-5	
15.85[.624]	4	3-640599-4	
11.89[.468]	3	3-640599-3	
7.92[.312]	2	3-640599-2	
△ SUPERSEDED BY 5-640599-4	95.10[3.744]	24	2-640599-4
△ SUPERSEDED BY 5-640599-3	91.13[3.588]	23	2-640599-3
△ SUPERSEDED BY 5-640599-2	87.17[3.432]	22	2-640599-2
△ SUPERSEDED BY 5-640599-1	83.21[3.276]	21	2-640599-1
△ SUPERSEDED BY 5-640599-0	79.25[3.120]	20	2-640599-0
△ SUPERSEDED BY 4-640599-9	75.29[2.964]	19	1-640599-9
	71.32[2.808]	18	1-640599-8
	67.36[2.652]	17	1-640599-7
	63.40[2.496]	16	1-640599-6
	59.44[2.340]	15	1-640599-5
△ SUPERSEDED BY 4-640599-4	55.47[2.184]	14	1-640599-4
	51.51[2.028]	13	1-640599-3
	47.55[1.872]	12	1-640599-2
	43.59[1.716]	11	1-640599-1
	39.62[1.560]	10	1-640599-0
	35.66[1.404]	9	640599-9
	31.70[1.248]	8	640599-8
	27.74[1.092]	7	640599-7
	23.77[.936]	6	640599-6
	19.81[.780]	5	640599-5
	15.85[.624]	4	640599-4
	11.89[.468]	3	640599-3
	7.92[.312]	2	640599-2
	DIM A	NO OF CIRCUITS	PART NO.

- 1 MATERIAL: CONNECTOR - NYLON UL94-V2 (ORANGE)
 CONTACTS - 0.30[.012] THICK COPPER ALLOY
 (BRIGHT TIN-LEAD 0.00203[.000080] MIN. THICK
 FOR CONTACTS 640599-2 THRU 2-640599-4)
 (MATTE WHISKER MITIGATED TIN 0.00203[.000080] MIN
 THICKNESS OVER NICKEL UNDERPLATE FOR
 3-640599-2 THRU 5-640599-4).
- 2 CONTACTS ACCEPT 18 AWG WIRE WITH 2.41[.095] MAX INSULATION DIAMETER.
- 3 CONTACTS MUST ACCEPT 1.14±0.03[.045±.001] SQUARE POST AND REMAIN LOCKED IN POSITION.
- 4 IDENTIFICATION NUMBER FOR LAST CIRCUIT MAY NOT APPEAR ON ALL ASSEMBLIES.
- 5 DIMENSIONS IN BRACKETS ARE IN INCHES.
- 6 HOUSING FEATURES ARE: FEED-THRU WITH LOCKING RAMP.
- 7 OBSOLETE PARTS: OBSOLETE CIS STREAMLINING PER D.RENAUD/D.SINISI



THIS DRAWING IS A CONTROLLED DOCUMENT.		DWN S.CARPENTER 09JUL2003		
DIMENSIONS: mm [INCHES]		CHK D BOSSI 09JUL2003		
TOLERANCES UNLESS OTHERWISE SPECIFIED:		APVD D BOSSI 09JUL2003	NAME	
0 PLC ± -		PRODUCT SPEC	MTA-156 CONNECTOR ASSEMBLY, 18 AWG, STANDARD	
1 PLC ± -		APPLICATION SPEC	SIZE	CAGE CODE
2 PLC ± -		108-1051	A2	00779
3 PLC ± 0.13 [.005]		114-1020	DRAWING NO	RESTRICTED TO
4 PLC ± -		WEIGHT -	C=640599	-
ANGLES ± -		CUSTOMER DRAWING	SCALE	SHEET
FINISH 1			4:1	1 OF 1
			REV	S2