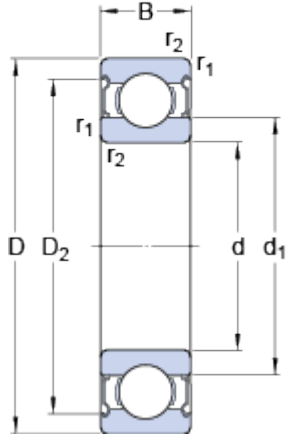


# 6005-2Z

SKF Explorer

## Dimensions



d	25	mm
D	47	mm
B	12	mm
d <sub>1</sub>	32	mm
D <sub>2</sub>	42.2	mm
r <sub>1,2</sub> min.	0.6	mm

## Abutment dimensions



d <sub>a</sub> min.	28.2	mm
d <sub>a</sub> max.	31.9	mm
D <sub>a</sub> max.	43.8	mm
r <sub>a</sub> max.	0.6	mm

## Calculation data

Basic dynamic load rating	C	11.9	kN
Basic static load rating	C <sub>0</sub>	6.6	kN
Fatigue load limit	P <sub>u</sub>	0.275	kN
Reference speed		32000	r/min
Limiting speed		16000	r/min
Calculation factor	k <sub>r</sub>	0.025	
Calculation factor	f <sub>0</sub>	14	

## Mass

