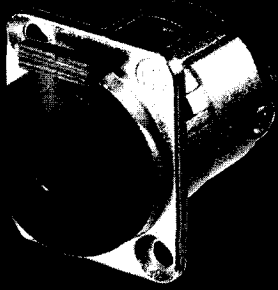
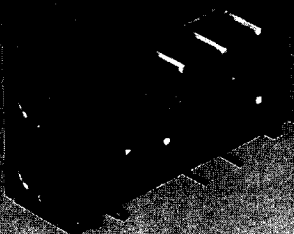


Jacks & Plugs



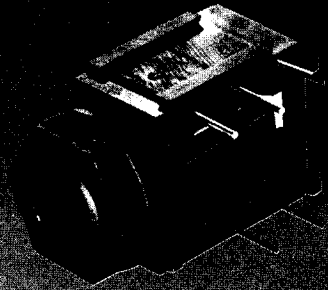
NJ3FP6C



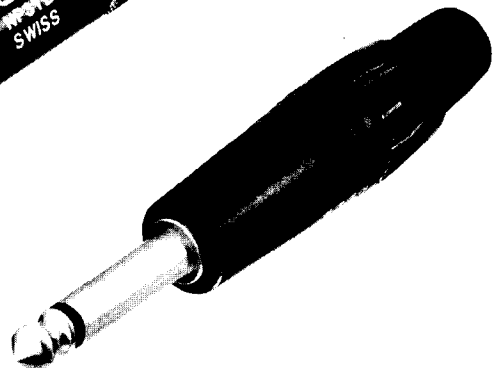
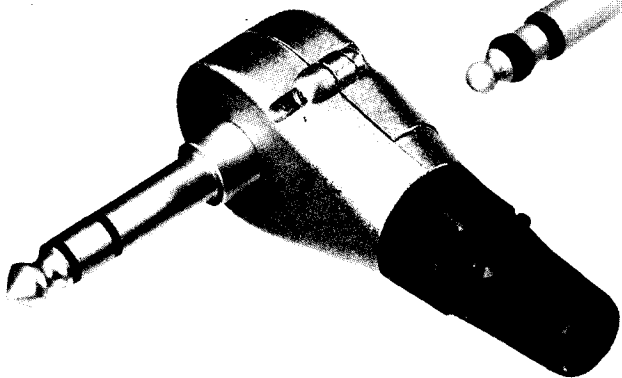
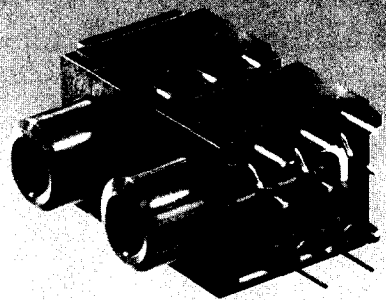
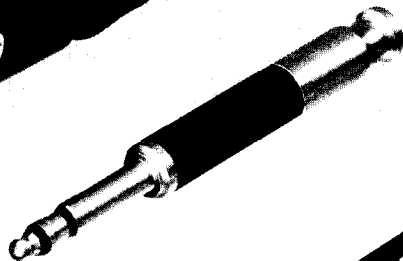
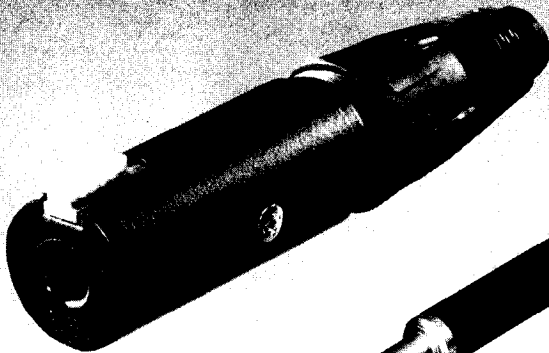
NJ3TT/2



NJ3TT/4



NJ3FDH6T



NEUTRIK

CONNECTING THE WORLD

CONNECTORS
AUDIO TEST SYSTEMS
INFOMATIC SYSTEMS

DESCRIPTION

1/4" PROFESSIONAL PHONE PLUGS
 "The lifetime plug"
 Die cast shell, Neutrik unique chuck-type strain relief with PU-sleeve for optimal cable protection

MIL/B-GAUGE-TYPE PHONE PLUGS:
 All metal design, chuck-type strain relief, no rivets, meets all prevailing standards

0,173" (4,4mm) BANTAM-TYPE MINIATURE PLUGS
 Very robust ergonomic design, all metal, "best looking Bantam in the world".

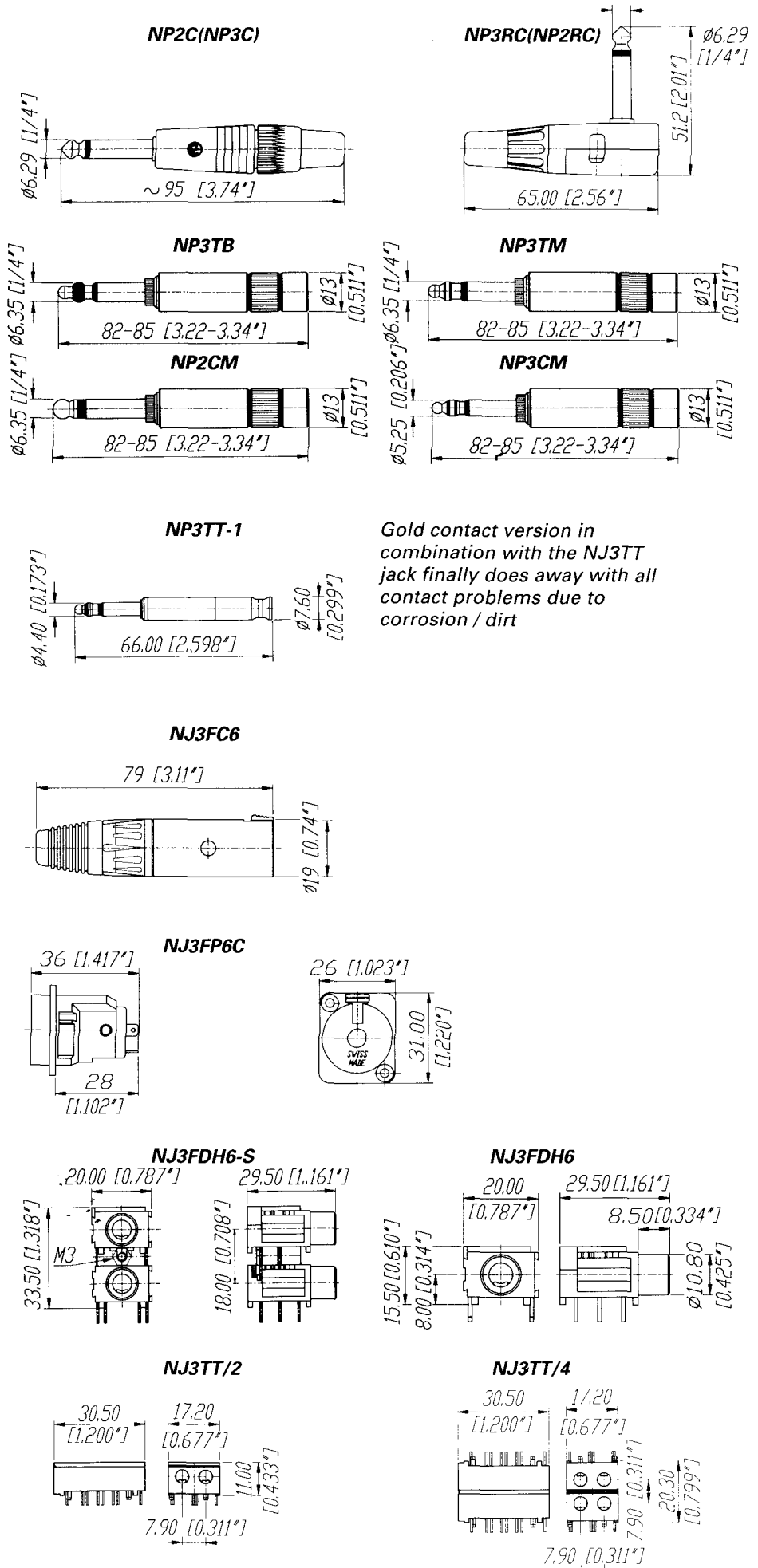
LOCKING 1/4 CABLE-JACK
 Another unique Neutrik innovation: securely locking jacks. Mates with all mono or stereo plugs specified to EIA RS 453, provides secure lockable interconnection

LOCKING 1/4" CHASSIS-JACK
 Mates with all mono or stereo plugs specified to EIA RS 453, dimensionally compatible with D-Series

1/4 "JACKS
 High retention force and low contact pressure. The complete separation of the two functions makes gold plating possible. Mates with all mono or stereo plugs specified to EIA RS 453

0,173" (4,4mm) BANTAM TYPE MINIATURE JACK
 Available pre-assembled as one pair or two pairs stacked back to back. Same design features as 1/4" jack.

DIMENSIONAL DRAWINGS



ORDERING INFORMATION

ORDERING INFORMATION					Applicable Standard	Wire size
Shell	Contacts	Terminations	Part Numbers	Special Versions	Compatibility	
Nickel Black Black Nickel Black	Nickel Nickel Nickel Nickel Nickel	Soldering Soldering Soldering Soldering Soldering	NP2C, NP3C NP2C-BAG NP3C-BAG NP2RC, NP3RC NP2RC-BAG, NP3RC-BAG	NP2C with built in 1:10 transformer to convert mike level to guitar inputs: add suffix "T10AA". Other colours for NP*C on request.	EIA RS 453	AWG 18
Black Red	Nickel Nickel	Soldering Soldering	NP3TB-B NP3TB-R		B-GAUGE BPO316	AWG 18
Black Red	Brass Brass	Soldering Soldering	NP3TM-B NP3TM-R		MIL-P-642/2	
Black Red	Brass Brass	Soldering Soldering	NP2CM-B NP2CM-R		MIL-P-642/4	
Black Red	Brass Brass	Soldering Soldering	NP3CM-B NP3CM-R		MIL-P-642/5A	AWG 20
Black Red	Nickel Nickel	Tip & ring: soldering sleeve: crimp	NP3TT-1-B NP3TT-1-R	Assembly tool: HX-TT for assembling & crimping, coloured sleeves	MIL-642/13	AWG 24
Black Red	Hard Gold Hard Gold		NP3TT-1-BAu NP3TT-1-RAu			
Nickel Black	Silver Silver	Soldering Soldering	NJ3FC6 NJ3FC6-BAG		EIA RS 453	AWG 18
Nickel Black Black/Plastic	Silver Silver Silver	Soldering	NJ3FP6C NJ3FP6C-BAG NJ3FP6P-BAG		EIA RS 453	AWG 18
Black/Plastic Black/Plastic Black/Plastic	Gold Gold Gold	PCB-soldering	NJ3FDH6 NJ3FDH6-T NJ3FDH6-S		EIA RS 453	N/A
Black/Plastic	Gold		NJ3FDH6-ST	With thread and nut 2 jacks stacked with one inner M3 center thread 2 jacks stacked with two outer threads and two nuts		
Black/Plastic Black/Plastic	Gold Gold	PCB-soldering	NJ3TT/2 NJ3TT/4		MIL-642-13-3	N/A

DESIGN INFORMATION

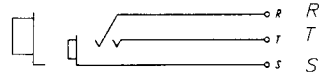
Part Numbers

Footprints (component side)

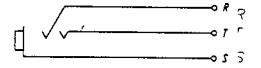
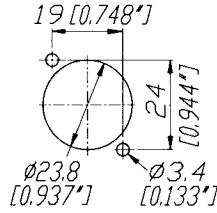
Panel Cutouts (front side)

Circuits

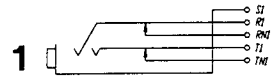
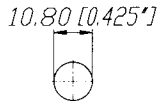
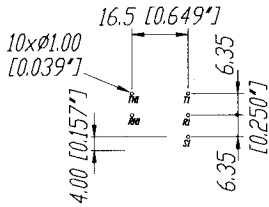
NJ3FC6



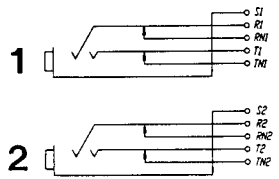
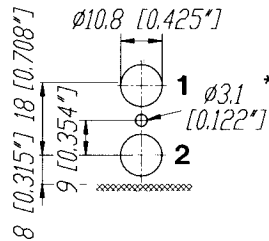
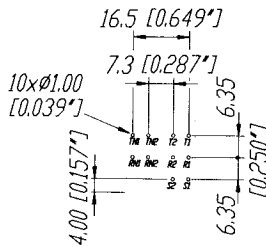
NJ3FP6C



NJ3FDH6

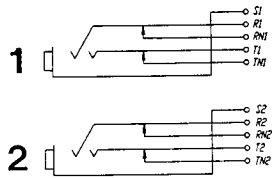
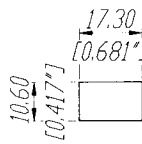
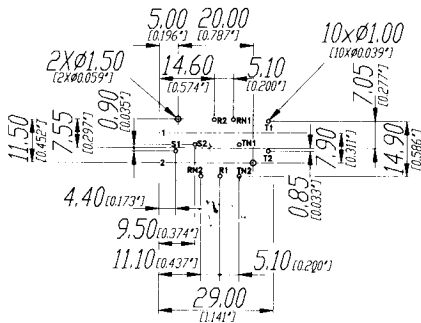


NJ3FDH6-ST

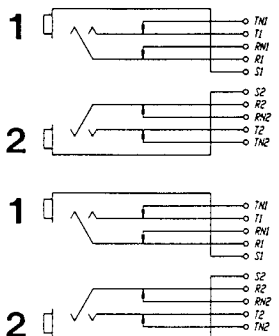
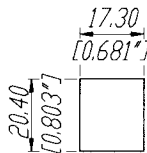
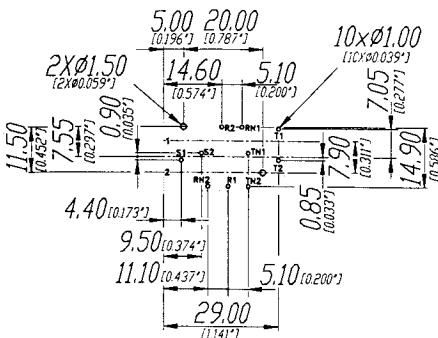


***NJ3FDH6-S only**

NJ3TT/2



NJ3TT/4



SPECIFICATION AND TECHNICAL DATA

SPECIFICATION	NP2C / NP3C / RC	NP3TB	NP3TT-1
MECHANICAL Insertion / Withdrawal Force Solderability, complies with:	depends on mating connector IEC 68-2-20	depends on mating connector IEC 68-2-20	depends on mating connector IEC 68-2-20
ELECTRICAL Contact Resistance Insulation Resistance Dielectric Withstanding Voltage Rated Current Temperature Range Insulation Resistance after Salt Mist & Damp Heat Test IEC 68-2-11 / 68-2-30	depends on mating connector >2.10 ³ MΩ 1 kVDC/2-pole-500 VDC/3-pole depends on mating connector -20°C to +65°C ≥10 ³ MΩ	depends on mating connector >2.10 ³ MΩ 1 kVDC depends on mating connector -20°C to +65°C ≥10 ³ MΩ	depends on mating connector >2.10 ³ MΩ 500 VDC depends on mating connector -20°C to +65°C ≥10 ³ MΩ
MATERIAL Contacts Insulation Housing / Handle Chuck Bushing	CuZn39Pb3 2μ Ni(Su) plated PA 6.6 30% GR ZnAl4Cu1-nickel plated or black coated POM POM+PU	CuZn39Pb3 2μ Ni(Su) plated PA 6.6 30% GR brass CuZn39Pb3 POM	CuZn39Pb3 CuSn6-TIP 2μ Ni(Su) plated PA 6.6 30% GR brass CuZn39Pb3 HEX Crimp
SPECIFICATION	NJ3FC/FP	NJ3FDH	NJ3TT
MECHANICAL Life Insertion / Withdrawal Force Locking Force Solderability, complies with:	>10000 cycles 19N / 22N >80N IEC 68-2-20	>10000 cycles 9N / 12N IEC 68-2-20	>10000 cycles 8N / 12N IEC 68-2-20
ELECTRICAL Contact Resistance Insulation Resistance Dielectric Withstanding Voltage Rated Current Temperature Range Insulation Resistance after Salt Mist & Damp Heat Test IEC 68-2-11 / 68-2-30	<3 mΩ initial <15 mΩ after life test >2.10 ³ MΩ 1.5 kVDC 10A -55°C to +100°C non operating -20°C to +65°C operating ≥10 ³ MΩ	<12 mΩ initial <20 mΩ after life test >2.10 ³ MΩ 500 VDC 1A -20°C to + 65°C ≥10 ³ MΩ	<15 mΩ initial <25 mΩ after life test >2.10 ³ MΩ 500 VDC ≥10 ³ MΩ
MATERIAL Contacts Insulation Housing / Handle Chuck Bushing	CuBe2 2μ Ag or 0.2μ Au Ground CuZn37 PA 6.6 30% GR ZnAl4Cu1 nickel plated or black coated FP6P: PA 6.6 30% GR POM PA 6.6 15% GR + PU	CuSn6 2μ Ni+0.2μ Au hard PA 6.6 30% GR	CuSn6 2μ Ni+0.2μ Au hard PA 6.6 30% GR