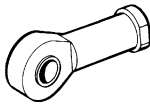
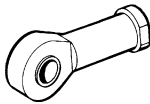
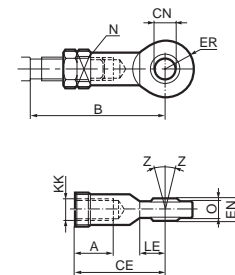


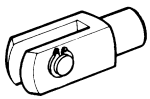
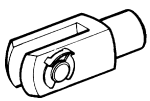
Piston rod mountings

| Type | Description | Cyl. bore Ø mm | Weight kg | Order code |
|---|--|-------------------|--------------|-----------------|
| Swivel rod eye  | Swivel rod eye for articulated mounting of cylinder. Swivel rod eye can be combined with clevis bracket GA. Maintenance-free. Materials Swivel rod eye, nut: Zinc-plated steel Swivel bearing according to DIN 648K: Hardened steel | 32 | 0,08 | P1C-4KRS |
| | | 40 | 0,12 | P1C-4LRS |
| | | 50 | 0,25 | P1C-4MRS |
| | | 63 | 0,25 | P1C-4MRS |
| | | 80 | 0,46 | P1C-4PRS |
| | | 100 | 0,46 | P1C-4PRS |
| 125 | 1,28 | P1C-4RRS | | |
| Stainless steel swivel rod eye  | Stainless-steel swivel rod eye for articulated mounting of cylinder. Swivel rod eye can be combined with clevis bracket GA. Maintenance-free. Materials Swivel rod eye, nut: Stainless steel Swivel bearing according to DIN 648K: Stainless steel | 32 | 0,08 | P1S-4JRT |
| | | 40 | 0,12 | P1S-4LRT |
| | | 50 | 0,25 | P1S-4MRT |
| | | 63 | 0,25 | P1S-4MRT |
| | | 80 | 0,46 | P1S-4PRT |
| | | 100 | 0,46 | P1S-4PRT |
| 125 | 1,28 | P1S-4RRT | | |

According to ISO 8139

| Cyl. bore mm | A mm | B min mm | B max mm | CE mm | CN H9 mm | EN h12 mm | ER mm | KK | LE min mm | N mm | O mm | Z mm |
|-----------------|---------|----------------|----------------|----------|----------------|-----------------|----------|----------|-----------------|---------|---------|---------|
| 32 | 20 | 48 | 55 | 43 | 10 | 14 | 14 | M10x1,25 | 15 | 17 | 10,5 | 12° |
| 40 | 22 | 56 | 62 | 50 | 12 | 16 | 16 | M12x1,25 | 17 | 19 | 12 | 12° |
| 50 | 28 | 72 | 80 | 64 | 16 | 21 | 21 | M16x1,5 | 22 | 22 | 15 | 15° |
| 63 | 28 | 72 | 80 | 64 | 16 | 21 | 21 | M16x1,5 | 22 | 22 | 15 | 15° |
| 80 | 33 | 87 | 97 | 77 | 20 | 25 | 25 | M20x1,5 | 26 | 32 | 18 | 15° |
| 100 | 33 | 87 | 97 | 77 | 20 | 25 | 25 | M20x1,5 | 26 | 32 | 18 | 15° |
| 125 | 51 | 123,5 | 137 | 110 | 30 | 37 | 35 | M27x2 | 36 | 41 | 25 | 15° |



| | | | | |
|---|--|-----------------|------|-----------------|
| Clevis  | Clevis for articulated mounting of cylinder. Material Clevis, clip, nut: Galvanized steel Pin: Hardened steel | 32 | 0,09 | P1C-4KRC |
| | | 40 | 0,15 | P1C-4LRC |
| | | 50 | 0,35 | P1C-4MRC |
| | | 63 | 0,35 | P1C-4MRC |
| | | 80 | 0,75 | P1C-4PRC |
| | | 100 | 0,75 | P1C-4PRC |
| 125 | 2,10 | P1C-4RRC | | |
| Stainless steel clevis  | Stainless-steel clevis for articulated mounting of cylinder. Material Clevis, nut: Stainless steel Pin: Stainless steel Circlips according to DIN 471: Stainless steel | 32 | 0,09 | P1S-4JRD |
| | | 40 | 0,15 | P1S-4LRD |
| | | 50 | 0,35 | P1S-4MRD |
| | | 63 | 0,35 | P1S-4MRD |
| | | 80 | 0,75 | P1S-4PRD |
| | | 100 | 0,75 | P1S-4PRD |
| 125 | 2,10 | P1S-4RRD | | |

According to ISO 8140

| Cyl. bore mm | A mm | B min mm | B max mm | CE mm | CK h11/E9 mm | CL mm | CM mm | ER mm | KK | LE mm | O mm |
|-----------------|---------|----------------|----------------|----------|--------------------|----------|----------|----------|----------|----------|---------|
| 32 | 20 | 45 | 52 | 40 | 10 | 20 | 10 | 16 | M10x1,25 | 20 | 28 |
| 40 | 24 | 54 | 60 | 48 | 12 | 24 | 12 | 19 | M12x1,25 | 24 | 32 |
| 50 | 32 | 72 | 80 | 64 | 16 | 32 | 16 | 25 | M16x1,5 | 32 | 41,5 |
| 63 | 32 | 72 | 80 | 64 | 16 | 32 | 16 | 25 | M16x1,5 | 32 | 41,5 |
| 80 | 40 | 90 | 100 | 80 | 20 | 40 | 20 | 32 | M20x1,5 | 40 | 50 |
| 100 | 40 | 90 | 100 | 80 | 20 | 40 | 20 | 32 | M20x1,5 | 40 | 50 |
| 125 | 56 | 123,5 | 137 | 110 | 30 | 55 | 30 | 45 | M27x2 | 54 | 72 |

