



CONVEYXONIC®

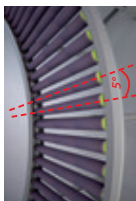
APPLICATIONS

The **ConveyXonic®** belt can also be installed on pallet conveyors. It can also be **adapted to suit many special applications**.

- ▶ **For light loads:**
- ▶ **Multi-level conveyors:** Efficient use possible at an angle of **10% maximum**.
- ▶ **Accumulation:** Accumulation rollers with grooved profiles are now available for use with the **ConveyXonic®**.
- ▶ **Curves:** minimum interior radius 800 mm and maximum angle roller to roller 5°.



As a partner and designer of solutions, we can help you meet your design parameters: line transfers, sorters, very light load conveyors, special geometries, etc.
Don't hesitate to contact us to discuss your conveyor needs!



This device is also designed for curved conveyor systems.

WIZARD CONVEYXONIC® – QUICK SELECTION GUIDE

The **ConveyXonic®** Wizard Hutchinson is a **free, simple and quick** selection guide for your **ConveyXonic®**.

- You choose the type of roller conveyor (straight or curved).
 - You enter the load to be transported and the desired flow speed.
- The Wizard then recommends the **ConveyXonic®** belt best suited to your needs.



Available on the App Store



Desktop version available on hutchinsontransmission.com

- ▶ To discover our other solutions dedicated to conveying systems, ask for our conveying market leaflet!

CONTACTS

HUTCHINSON DISTRIBUTOR



HUTCHINSON BELT DRIVE SYSTEMS
Rue des Martys – BP 423 – 37304 Joué-lès-Tours Cedex – France
Tél. : +33 (0)2 47 48 39 99 – Fax : +33 (0)2 47 48 38 34
belt.drives@hutchinson.fr

www.hutchinsontransmission.com



We make it **possible**

The **ConveyXonic®** is a **power transmission elastic belt featuring multiple longitudinal ribs**.

It has been specifically developed for roller conveyors. It is the only technology capable of transporting parcels weighing from 1 kg to 2 tonnes.

- ▶ **Cost savings**
- ▶ **Easy to use**
- ▶ **Technical performance**
- ▶ **Customer confidence**

STRUCTURE

The polyamide elastic cord of the **ConveyXonic®** has outstanding mechanical properties. It can withstand temperatures of **more than 80°C**.

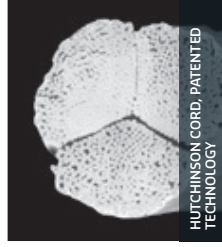
Hutchinson has developed a standard compound and a «cold-resistant» rubber compound capable of withstanding temperatures down to **-30°C**. The cold-resistant **ConveyXonic®** works equally well with straight or curved conveyors (according to references).



Cold resistant to **-30°C**



Temperature up to **80°C**



HUTCHINSON CORD, PATENTED TECHNOLOGY

CHARACTERISTICS

The elasticity of the **ConveyXonic®** allows it to absorb shocks, unlike chains or synchronous belts. **ConveyXonic®** belts are **antistatic**. They comply with ISO 1813.

Conveyor cleaning:

Water	Alcohol	PH > 10	High-pressure washing	Corrosion
★★★★	★★★	★★★	★★★★	★★★★
Resistance ConveyXonic				

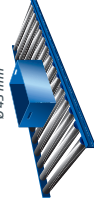
POWER RANGE

Two profiles to cover a power range from 55 to 550 W and 0.10 m/s to 3 m/s.

The **ConveyXonic® P1 2/3/4** ribs is designed for light loads from 1 to 400 kg for roller conveyors (50mm roller diameter, 43mm ribbed pulley diameter). It easily outperforms round, urethane belts, with its 4-times higher transmission ratio.

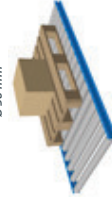
Light loads

Ø 43 mm



Medium Loads

Ø 56 mm

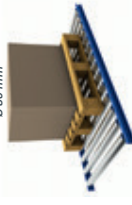


The **ConveyXonic® P1 4/6/8 ribs** handle loads of 400 Kg to 1.2 T for roller conveyors (60,5 mm diameter for a 56 mm ribbed pulley). Chains are replaced.

Thanks to its 97% greater efficiency, the **ConveyXonic® PK** can be used instead of chain and timing belts on roller conveyors for pallets (89mm roller diameter, 80mm ribbed pulley diameter) and bear loads from 300 kg to 2 tonnes.

Heavy loads

Ø 80 mm



BELT PROFILE	P1 (for light loads)		
Loads	1 to 200 Kg	201 to 300 Kg	301 to 600 Kg
No. of ribs	2	3	4

Specific values to be adapted to the conveyor's configuration

BELT PROFILE	P1 (for medium loads)		
Loads	400 Kg 1200 Kg	
No. of ribs	4	6	8

Specific values to be adapted to the conveyor's configuration

BELT PROFILE	PK (for heavy loads)		
Loads	300 to 1 500 Kg	1 501 to 2 000 Kg	For more than 2 000 Kg please contact us
No. of ribs	6	8	10

Specific values to be adapted to the conveyor's configuration

SEPTEMBER 2014, non contractual document, Hutchinson reserves the right to modify all or part of this documentation without prior warning. Design: www.lbtb-synergie.com



HUTCHINSON®



CONVEYXONIC®



COST SAVINGS

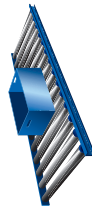
⚡ **Electricity:** The efficiency of the **ConveyXonic®** reduces the motor's electrical consumption.



📦 **Stock:** **Only one technology to stock:** In the case of light loads and depending on the weight of the load being transported, you change the number of ribs on the belt but always retain the same roller. Our complete range of **ConveyXonic®** belts is **readily available** from all our distributors.

💰 **Low purchase cost:** immediate savings.

Light loads



The **ConveyXonic®** belt's exceptional mechanical properties mean that a single motor is able to power up to a maximum of 50 rollers. Generating a saving of at least 30% on each module.

Medium Loads

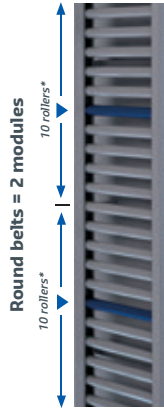


With a **ConveyXonic®** belt, a single motor is needed to run a maximum of 20 rollers.

Heavy loads



With a **ConveyXonic®** belt, a single motor is needed to run a maximum of 12 rollers.



Round belts = 2 modules



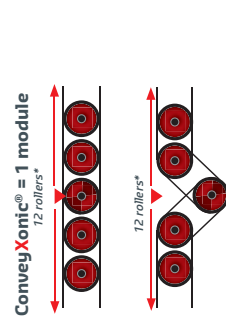
ConveyXonic® = 1 module

Just 1 motor
* 50 mm diameter rollers for a 43mm pulley
Power: 55 W - Speed: 100 rpm - Load: 50 kg
Indicative values



ConveyXonic® = 1 module

Just 1 motor
*60.5 mm diameter rollers for a 56mm pulley
Power: 85 W - Speed: 100 rpm - Load: 400 kg
Indicative values



ConveyXonic® = 1 module

12 rollers*
geared motor
*89 mm diameter rollers for a 80mm pulley
Indicative values

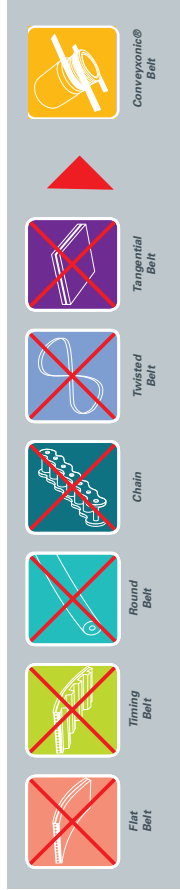


TECHNICAL PERFORMANCE

The **ConveyXonic®** is the **6-in-1** belt for transporting loads from **1 kg to 2 tonnes**, and thus replaces the six technologies used in the conveyor system (flat belt, round belt, timing belt, twisted belt, tangential and chain belt).



⚡ **Increased speed:** The **ConveyXonic®** belt pushes the speed limits for parcel transport (up to 3 m/s for the P1 profile). It can be adapted to suit all linear speeds, making for **smooth transport**.



INSTALLATION AND MAINTENANCE

Installation of the **ConveyXonic®** belt is **quick and easy**.

The elasticity of the **ConveyXonic®** belt means **generous installation tolerances**.



⚡ **Hidden costs disappear:** No lubrication, no corrosion, no belt tightening and retightening, no maintenance.



CUSTOMER CONFIDENCE



🧹 **Clean:** The **ConveyXonic®** belt does **not need any special maintenance**.

🧹 **No maintenance, no greasing,** so the conveyor **stays clean**. There is nowhere for dust to accumulate.

💧 The grooved profile of the **ConveyXonic®** drains off water, which keeps the belts dry.



🔇 **Silence:** Thanks to the elastic properties of its side guides, the **ConveyXonic®** prevents the belt jumping and **reduces irritating noise** by absorbing shocks, vibrations and flapping.

🔇 The grooves in the **ConveyXonic®** make the **transmission very silent**, whatever speed the conveyor is operating at.



🏆 **Yield:** **No more chain stops:** the **ConveyXonic®** can now operate non-stop 24/7 in complete silence.



🛡️ **Safety:** A number of safety features are available on the market to meet the requirements of your conveyor. Please contact us for more information.