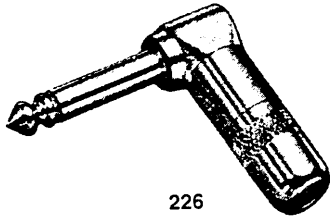


RIGHT-ANGLE AUDIO PHONE PLUG

FEATURING 3-PIECE CONSTRUCTION AND FAST TERMINATION/ASSEMBLY



226

Switchcraft's 2- or 3-conductor right-angle audio phone plugs are designed for OEMs and users of commercial phone plugs. The plugs offer large terminals for easy wiring, and only three pieces to assemble - handle, insulator and finger/housing assembly and rugged reliability for stable, long-term, trouble-free operation.

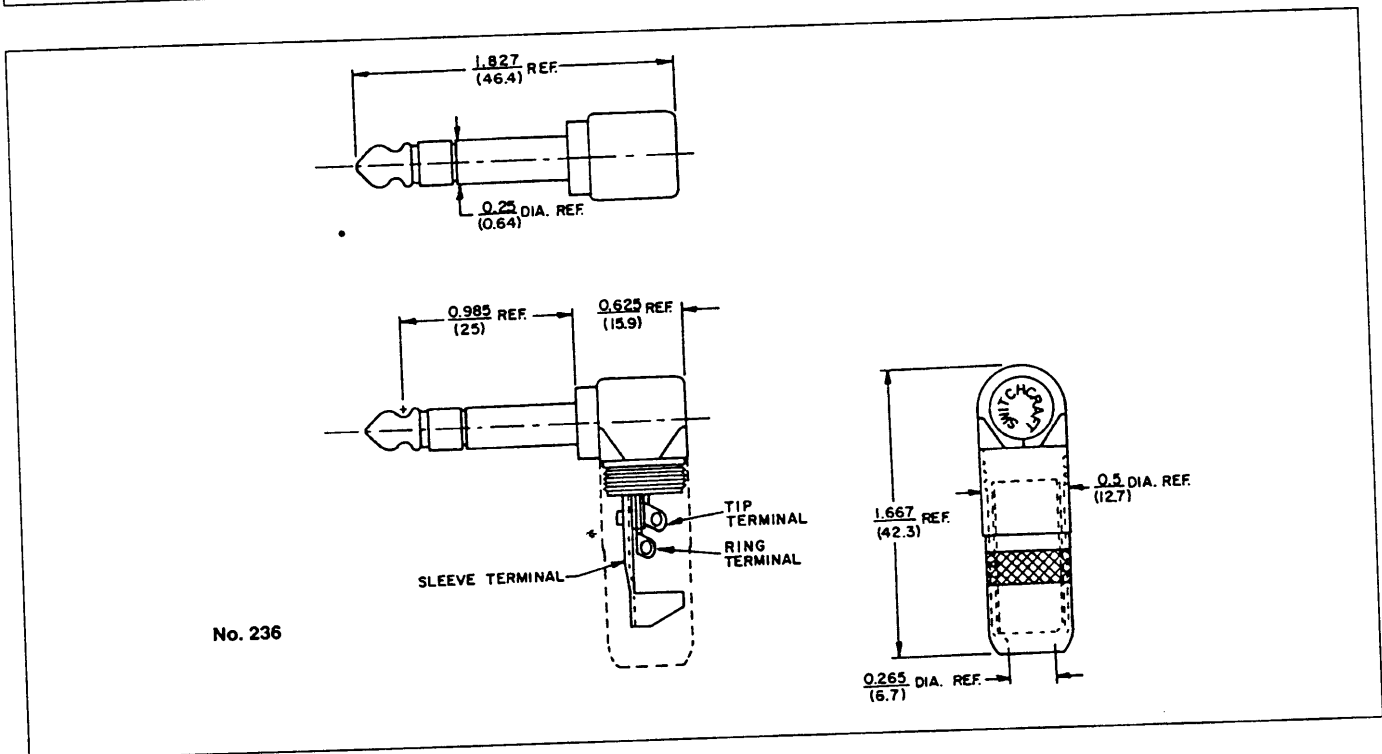
FEATURES

- **Easy Termination:** Large terminals accept up to 16 AWG wiring (cables up to .25 inch diameter)
- **3-Piece Assembly:** Screw on the handle for quick and easy assembly; minimizes labor costs.
- **Rugged:** All metal exterior construction.
- **Low Profile:** Only 1/2 inch wide. Ideal for crowded, multi-channel panels. Right-angle handle minimizes space required behind equipment.
- **Knurled Handles:** Positive grip during connect/disconnect.
- **Rugged Cable Clamp:** Isolates pulling and twisting strains.

SPECIFICATIONS

- Tip, Rod and Handle:** Brass, nickel-plated.
- Housing/Sleeve:** Die-cast zinc, copper and nickel-plated.
- Tip Terminal:** Brass, tin-plated.
- Sleeve (Clamp) Terminal:** Steel, tin-plated.
- Insulation:** Thermoplastic.
- Dielectric Withstanding Voltage:** 500 Vac.
- Insulation Resistance:** 50,000 Megaohms minimum (initial).
- Operating Temperature:** -20°C to +65°C.

Part Number	Description	Typical Mating Jack
236	3-conductor 1/4 inch right-angle commercial plug.	12B, 13B 112B, 113B
226	2-conductor 1/4 inch right-angle commercial plug	11, 12A 111, 112A



No. 236

DIMENSIONS ARE FOR REFERENCE ONLY Inch
(mm)

NOTE: Contact your Switchcraft Representative for price and delivery.

All products shown in this catalog are covered by Switchcraft's limited lifetime warranty.

® Registered trademark of Switchcraft, Inc.

JACKS AND PLUGS