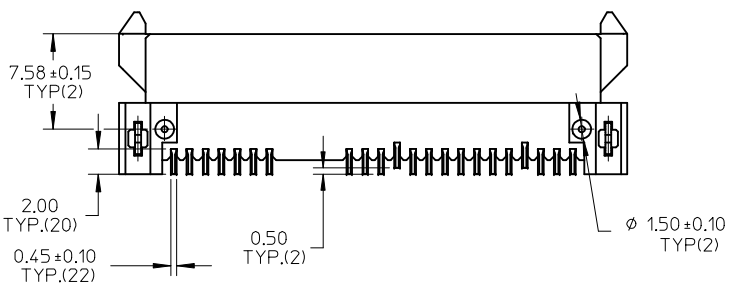


Detail1

NOTES:

- 1.MATERIAL:
  - HOUSING: THERMAL PLASTIC, GLASS FILLED, UL94V-0. COLOR: BLACK;
  - FORKLOCK: COPPER ALLOY;
  - TERMINALS: COPPER ALLOY.
- 2.TERMINAL PLATING:
  - CONTACT AREA:
    - (a) GOLD FLASH(0.025 MICRONS MINIMUM);
    - (b) GOLD, THICKNESS=0.76 MICRONS MINIMUM;
    - (c) GOLD, THICKNESS=0.38 MICRONS MINIMUM;
  - SOLDER AREA: TIN, THICKNESS=2.00 MICRONS MINIMUM;
  - UNDER PLATE: NICKEL, THICKNESS=1.27 MICRONS MINIMUM.
- 3.FORLOCK PLATING:
  - SOLDER AREA: TIN, THICKNESS=2.00 MICRONS MINIMUM;
  - UNDER PLATING: NICKEL, THICKNESS=1.27 MICRONS MINIMUM.
- 4.PRODUCT SPECIFICATION: PS-67492-001.
- 5.PACKAGING METHOD: 47018-400\*, TAPE REEL, DETAIL REFER TO PK-47018-003, 47018-210\*, TAPE REEL, DETAIL REFER TO PK-47018-001; OTHERS, TRAY, DETAIL REFER TO PK-67492-001.
- 6.MATING PARTS: 87703/87672.
- 7.PRODUCT COMPLIANT TO RoSH DIRECTIVE 2002/95/EC AND 2000/53/EC.



REVISED EC NO: SH2012-0284 DRWG: GLL I CHKD: APPR: AY IN REV	2012/02/29 2012/03/13	QUALITY SYMBOLS $F_A=0$ $F_C=0$ $F_B=0$	GENERAL TOLERANCES (UNLESS SPECIFIED)		DIMENSION STYLE <b>MM ONLY</b>	SCALE <b>2:1</b>	DESIGN UNITS <b>METRIC</b>	THIRD ANGLE PROJECTION		
			mm	INCH	DRAWN BY GLL I	DATE 2011/12/12	SERIAL ATA DOCKING CONNECTOR TOP MOUNT TYPE <b>MOLEX</b> MOLEX INCORPORATED			
			4 PLACES ± --- ± ---	3 PLACES ± --- ± ---	CHECKED BY	DATE				
			2 PLACES ± 0.25 ± --- 1 PLACE ± 0.25 ± --- ANGULAR ± 3 °	DRAFT WHERE APPLICABLE MUST REMAIN WITHIN DIMENSIONS		APPROVED BY XJSONG	DATE 2011/12/12	DOCUMENT NO. <b>SD-47018-001</b>	SHEET NO. 1 OF 2	

