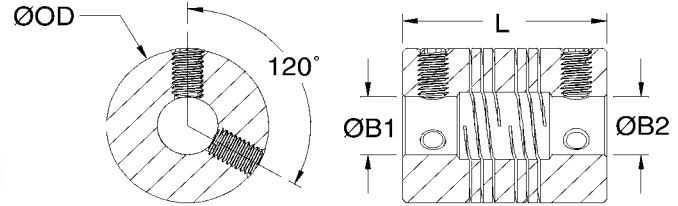
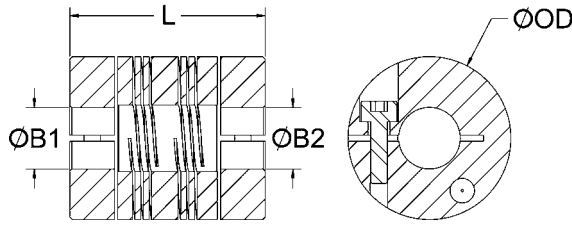


FOUR BEAM FLEXIBLE COUPLINGS

INCH DIMENSION SERIES • STAINLESS STEEL

PCR/PSR



PART NUMBER		SPECIFICATIONS					PERFORMANCE				
CLAMP STYLE	SET SCREW STYLE	BORES B1, B2 (in)	OUTER DIAM. OD (in)	L (in) (PCR/PSR)	CAP SCREW (PCR)	SET SCREW (PSR)	STATIC TORQUE (lb-in)	TORSIONAL STIFFNESS (Deg/lb-in)	PARALLEL MISALIGNMENT (in)	AXIAL MOTION (in)	MOMENT OF INERTIA (lb-in ²)
PCR6	PSR6	1.5 (.0938)	0.375	0.563	M1.6	M2	7.5	0.751	0.008	0.005	0.0003
PCR8	PSR8	1.5 (.0938)	0.500	0.750	M2	M2	11	0.368	0.008	0.005	0.0012
		2 (.1250)					11	0.368			
PCR10	PSR10	2 (.1250)	0.625	0.800	M2	M3	20	0.184	0.008	0.005	0.0030
		2.5 (.1563)					16	0.286			
		3 (.1875)					16	0.286			
PCR12	PSR12	2 (.1250)	0.750	0.900	M2.5	M4	35	0.085	0.008	0.005	0.0070
		2.5 (.1563)					23	0.151			
		3 (.1875)					23	0.151			
		4 (.2500)					19	0.179			
PCR14	PSR14	3 (.1875)	0.875	1.063	M3	M5	27	0.091	0.008	0.005	0.0157
		4 (.2500)					24	0.107			
		5 (.3125)					22	0.135			
PCR16	PSR16	4 (.2500)	1.000	1.250	M4	M4	49	0.079	0.015	0.010	0.0317
		5 (.3125)					44	0.094			
		6 (.3750)					41	0.103			
PCR18	PSR18	4 (.2500)	1.125	1.500	M4	M5	63	0.053	0.015	0.010	0.0603
		5 (.3125)					60	0.056			
		6 (.3750)					54	0.071			
		8 (.5000)					46	0.111			
PCR20	PSR20	4 (.2500)	1.250	1.500	M4	M6	92	0.031	0.015	0.010	0.0922
		5 (.3125)					86	0.037			
		6 (.3750)					81	0.044			
		8 (.5000)					70	0.064			

Note 1 Static torque ratings are at maximum misalignment. To obtain dynamic rating, static ratings should be divided by 2 for non-reversing applications and by 4 for reversing applications.

Note 2 Hardware is alloy steel with black oxide finish. PCR series parts have socket head cap screws on each end. PSR series parts: sizes 6 through 12 have one set screw on each end; sizes 14 through 20 have two set screws on each end 120° apart.

Note 3 Performance ratings are for guidance only. The user must determine suitability for a particular application.

Note 4 Angular misalignment on all couplings is 3°.

Note 5 Shafts may penetrate up to 0.5 x L. Be certain shafts do not touch.

Note 6 Coupling torque and wind-up are determined by the largest bore selected.

FOR ENGINEERING AND WARRANTY INFORMATION SEE WWW.RULAND.COM