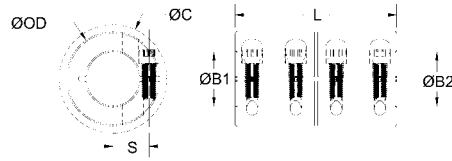


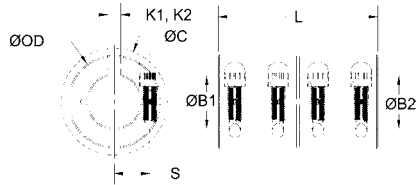
ONE- AND TWO-PIECE RIGID COUPLINGS WITHOUT OR WITH KEYWAY • METRIC DIMENSION SERIES

MCLX/MSPX MCLC/MSPC

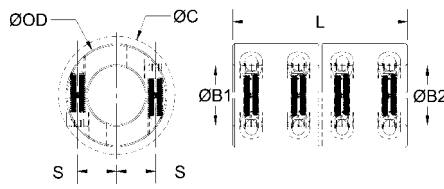
MCLX



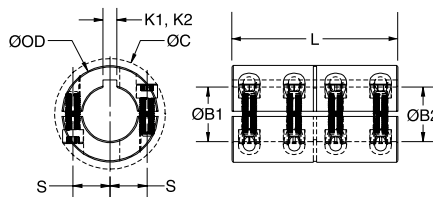
MCLC



MSPX



MSPC



- Does not mar the shaft.
- Precision honed bore on straight bore couplings.
- 3-piece styles available.
- Nypatch® Anti-vibration hardware.
- Opposing hardware on 2-piece styles.
- Additional sizes available.
- Bore tolerance: +.050 mm
+.012 mm
- Maximum speed: 4,000 rpm

PART NUMBER

ONE-PIECE			TWO-PIECE	
BLACK OXIDE STEEL	ALUMINUM	STAINLESS STEEL	BLACK OXIDE STEEL	STAINLESS STEEL
MCLX-3-3-F	MCLX-3-3-A	MCLX-3-3-SS	MSPX-3-3-F	MSPX-3-3-SS
MCLX-4-4-F	MCLX-4-4-A	MCLX-4-4-SS	MSPX-4-4-F	MSPX-4-4-SS
MCLX-5-5-F	MCLX-5-5-A	MCLX-5-5-SS	MSPX-5-5-F	MSPX-5-5-SS
MCLX-6-6-F	MCLX-6-6-A	MCLX-6-6-SS	MSPX-6-6-F	MSPX-6-6-SS
MCLX-8-8-F	MCLX-8-8-A	MCLX-8-8-SS	MSPX-8-8-F	MSPX-8-8-SS
MCLX-10-10-F	MCLX-10-10-A	MCLX-10-10-SS	MSPX-10-10-F	MSPX-10-10-SS
MCLX-12-12-F	MCLX-12-12-A	MCLX-12-12-SS	MSPX-12-12-F	MSPX-12-12-SS
MCLX-14-14-F		MCLX-14-14-SS	MSPX-14-14-F	MSPX-14-14-SS
MCLX-15-15-F		MCLX-15-15-SS	MSPX-15-15-F	MSPX-15-15-SS
MCLX-16-16-F		MCLX-16-16-SS	MSPX-16-16-F	MSPX-16-16-SS
MCLX-20-20-F		MCLX-20-20-SS	MSPX-20-20-F	MSPX-20-20-SS
MCLX-25-25-F		MCLX-25-25-SS	MSPX-25-25-F	MSPX-25-25-SS
MCLX-30-30-F		MCLX-30-30-SS	MSPX-30-30-F	MSPX-30-30-SS
MCLX-35-35-F		MCLX-35-35-SS	MSPX-35-35-F	MSPX-35-35-SS
MCLX-40-40-F		MCLX-40-40-SS	MSPX-40-40-F	MSPX-40-40-SS
MCLX-50-50-F		MCLX-50-50-SS	MSPX-50-50-F	MSPX-50-50-SS
MCLC-6-6-F		MCLC-6-6-SS	MSPC-6-6-F	MSPC-6-6-SS
MCLC-8-8-F		MCLC-8-8-SS	MSPC-8-8-F	MSPC-8-8-SS
MCLC-10-10-F		MCLC-10-10-SS	MSPC-10-10-F	MSPC-10-10-SS
MCLC-12-12-F		MCLC-12-12-SS	MSPC-12-12-F	MSPC-12-12-SS
MCLC-14-14-F		MCLC-14-14-SS	MSPC-14-14-F	MSPC-14-14-SS
MCLC-15-15-F		MCLC-15-15-SS	MSPC-15-15-F	MSPC-15-15-SS
MCLC-16-16-F		MCLC-16-16-SS	MSPC-16-16-F	MSPC-16-16-SS
MCLC-20-20-F		MCLC-20-20-SS	MSPC-20-20-F	MSPC-20-20-SS
MCLC-25-25-F		MCLC-25-25-SS	MSPC-25-25-F	MSPC-25-25-SS
MCLC-30-30-F		MCLC-30-30-SS	MSPC-30-30-F	MSPC-30-30-SS
MCLC-35-35-F		MCLC-35-35-SS	MSPC-35-35-F	MSPC-35-35-SS
MCLC-40-40-F		MCLC-40-40-SS	MSPC-40-40-F	MSPC-40-40-SS
MCLC-50-50-F		MCLC-50-50-SS	MSPC-50-50-F	MSPC-50-50-SS

SPECIFICATIONS

BORES B1, B2 (mm)	OD (mm)	LENGTH L (mm)	SCREW LOC. S (mm)	CLEARANCE DIAM. C (mm) MAX	KEYWAY K1, K2 (mm)	FORGED CLAMP SCREW
3	15	22	4.6	15.0		M2
4	15	22	4.6	15.0		M2
5	15	22	4.6	15.0		M2
6	18	30	5.9	21.5		M3
8	24	35	9.0	27.1		M3
10	29	45	10.6	33.0		M4
12	29	45	10.6	33.0		M4
14	34	50	12.0	39.4		M5
15	34	50	12.0	39.4		M5
16	34	50	12.0	39.4		M5
20	42	65	15.4	48.9		M6
25	45	75	16.9	51.5		M6
30	53	83	20.9	58.7		M6
35	67	95	26.7	74.7		M8
40	77	108	31.8	84.0		M8
50	85	124	34.1	94.2		M10
6	18	30	5.9	21.5	2	M3
8	24	35	9.0	27.1	2	M3
10	29	45	10.6	33.0	3	M4
12	29	45	10.6	33.0	4	M4
14	34	50	12.0	39.4	5	M5
15	34	50	12.0	39.4	5	M5
16	34	50	12.0	39.4	5	M5
20	42	65	15.4	48.9	6	M6
25	45	75	16.9	51.5	8	M6
30	53	83	20.9	58.7	8	M6
35	67	95	26.7	74.7	10	M8
40	77	108	31.8	84.0	12	M8
50	85	124	34.1	94.2	14	M10

FOR ENGINEERING AND WARRANTY INFORMATION SEE WWW.RULAND.COM