



# EM Series

## Waterproof Bayonet Lock Connector for Power Supply

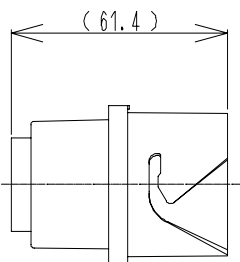


### ◆ Features

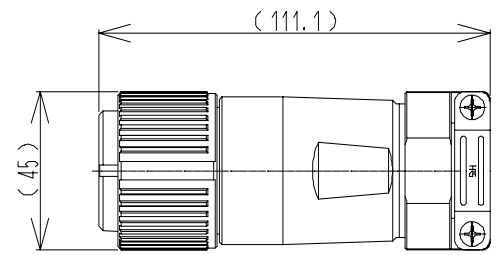
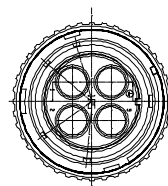
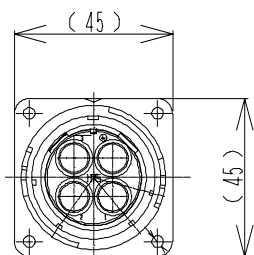
1. High current 4 pos. connector (Three-phase power source + ground)
2. Rated current: 50 A per contact (Refer to the derating curve on page 3)
3. Applicable cable conductor size: 8 mm<sup>2</sup>
4. Easy crimp termination with standard tool
5. Quick and secure bayonet lock
6. Waterproof structure in mated condition [IP67]
7. Sequential ground contact
8. RoHS compliant

### ◆ Dimensions (EM35)

Receptacle



Plug + Cable Clamp

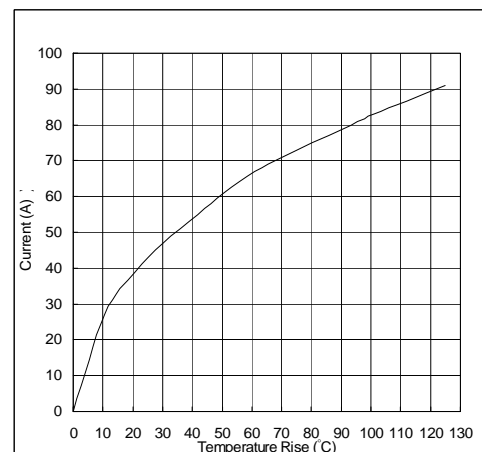
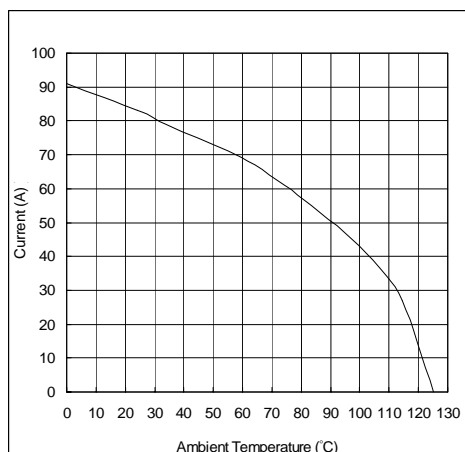


[Derating Curve (Basic Curve)]

[Temperature Rise Curve]

### ◆ High Current Capacity

Measuring Method:  
Serially connect 3 contacts except for the grounding contact with 8 mm<sup>2</sup> wire. Plug is sealed to provide water tightness.



Specifications herein are subject to change without notice. Contact Hirose for latest specifications, drawings or availabilities.