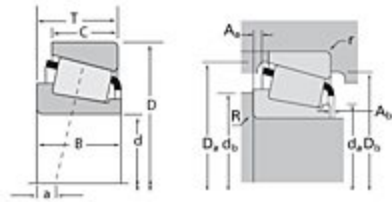


# TIMKEN

The Timken Company  
 4500 Mt Pleasant St. NW  
 N. Canton, OH 44720  
 Phone: (234) 262-3000  
 E-Mail: [CustomerCAD@timken.com](mailto:CustomerCAD@timken.com) • Web site: [www.timken.com](http://www.timken.com)

## Timken Part Number LM102949 - LM102911, Tapered Roller Bearings - TS (Tapered Single) Imperial

This is the most basic and most widely used type of tapered roller bearing. It consists of two main separable parts: the cone (inner ring) assembly and the cup (outer ring). It is typically mounted in opposing pairs on a shaft.



[Specifications](#) | [Dimensions](#) | [Abutment and Fillet Dimensions](#) | [Basic Load Ratings](#) | [Factors](#)

### Specifications

<b>Series</b>	LM102900
<b>Cone Part Number</b>	LM102949
<b>Cup Part Number</b>	LM102911
<b>Design Units</b>	Imperial
<b>Bearing Weight</b>	0.300 Kg 0.70 lb
<b>Cage Type</b>	Stamped Steel

### Dimensions

<b>d - Bore</b>	45.242 mm 1.7812 in
<b>D - Cup Outer Diameter</b>	73.431 mm 2.8910 in

<b>B - Cone Width</b>	19.812 mm 0.7800 in
<b>C - Cup Width</b>	17.620 mm 0.6937 in
<b>T - Bearing Width</b>	21.430 mm 0.8437 in

#### Abutment and Fillet Dimensions

<b>R - Cone Backface "To Clear" Radius<sup>1</sup></b>	3.560 mm 0.14 in
<b>r - Cup Backface "To Clear" Radius<sup>2</sup></b>	0.76 mm 0.030 in
<b>da - Cone Frontface Backing Diameter</b>	50.04 mm 1.97 in
<b>db - Cone Backface Backing Diameter</b>	55.88 mm 2.20 in
<b>Da - Cup Frontface Backing Diameter</b>	71.10 mm 2.80 in
<b>Db - Cup Backface Backing Diameter</b>	67.06 mm 2.64 in
<b>Ab - Cage-Cone Frontface Clearance</b>	1.8 mm 0.07 in
<b>Aa - Cage-Cone Backface Clearance</b>	0.3 mm 0.01 in
<b>a - Effective Center Location<sup>3</sup></b>	-4.60 mm -0.18 in

#### Basic Load Ratings

<b>C90 - Dynamic Radial Rating (90 million revolutions)<sup>4</sup></b>	18900 N 4250 lbf
<b>C1 - Dynamic Radial Rating (1 million revolutions)<sup>5</sup></b>	72900 N 16400 lbf
<b>C0 - Static Radial Rating</b>	81800 N 18400 lbf
<b>C<sub>a90</sub> - Dynamic Thrust Rating (90 million revolutions)<sup>6</sup></b>	9870 N 2220 lbf

## Factors

<b>K - Factor<sup>7</sup></b>	1.91
<b>e - ISO Factor<sup>8</sup></b>	0.31
<b>Y - ISO Factor<sup>9</sup></b>	1.97
<b>G1 - Heat Generation Factor (Roller-Raceway)</b>	31.1
<b>G2 - Heat Generation Factor (Rib-Roller End)</b>	18
<b>Cg - Geometry Factor</b>	0.0744

<sup>1</sup> These maximum fillet radii will be cleared by the bearing corners.

<sup>2</sup> These maximum fillet radii will be cleared by the bearing corners.

<sup>3</sup> Negative value indicates effective center inside cone backface.

<sup>4</sup> Based on  $90 \times 10^6$  revolutions  $L_{10}$  life, for The Timken Company life calculation method.  $C_{90}$  and  $C_{a90}$  are radial and thrust values.

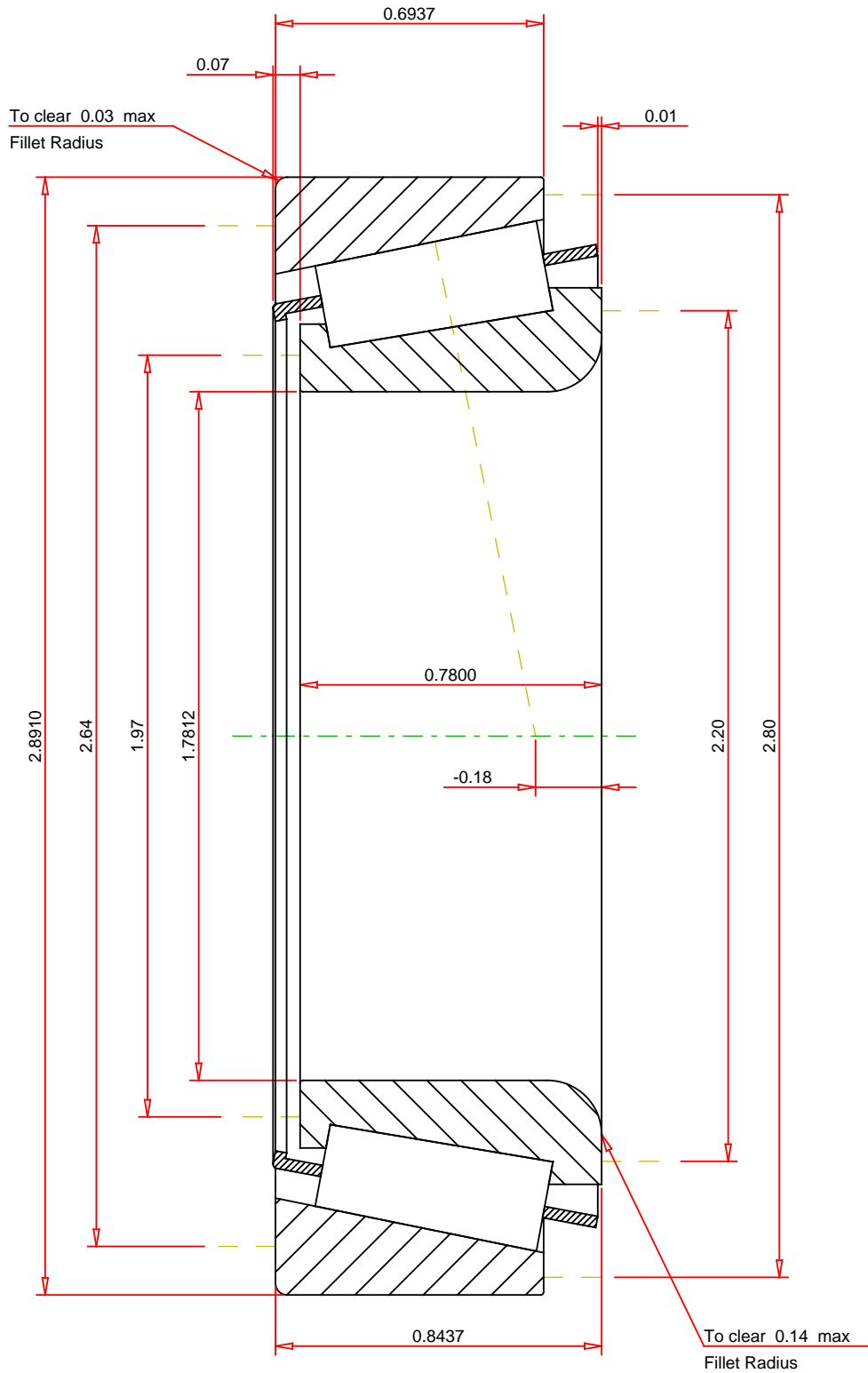
<sup>5</sup> Based on  $1 \times 10^6$  revolutions  $L_{10}$  life, for the ISO life calculation method.

<sup>6</sup> Based on  $90 \times 10^6$  revolutions  $L_{10}$  life, for The Timken Company life calculation method.  $C_{90}$  and  $C_{a90}$  are radial and thrust values for a single-row,  $C_{90(2)}$  is the two-row radial value.

<sup>7</sup> These factors apply for both inch and metric calculations. Consult your Timken representative for instruction on use.

<sup>8</sup> These factors apply for both inch and metric calculations. Consult your Timken representative for instruction on use.

<sup>9</sup> These factors apply for both inch and metric calculations. Consult your Timken representative for instruction on use.



IMPERIAL UNITS

ISO Factor - e	0.31
ISO Factor - Y	1.97
Bearing Weight	0.7 lbf
Number of Rollers Per Row	23
Effective Center Location	-0.18 inch

**TIMKEN**®

**LM102949 - LM102911  
TS BEARING ASSEMBLY**

**THE TIMKEN COMPANY**  
NORTH CANTON, OHIO USA

K Factor	1.91
Dynamic Radial Rating - C90	18900 lbf
Dynamic Thrust Rating - Ca90	9870 lbf
Static Radial Rating - C0	81800 lbf
Dynamic Radial Rating - C1	72900 lbf

Every reasonable effort has been made to ensure the accuracy of the information contained in this writing, but no liability is accepted for errors, omissions or for any other reason.

**FOR DISCUSSION ONLY**