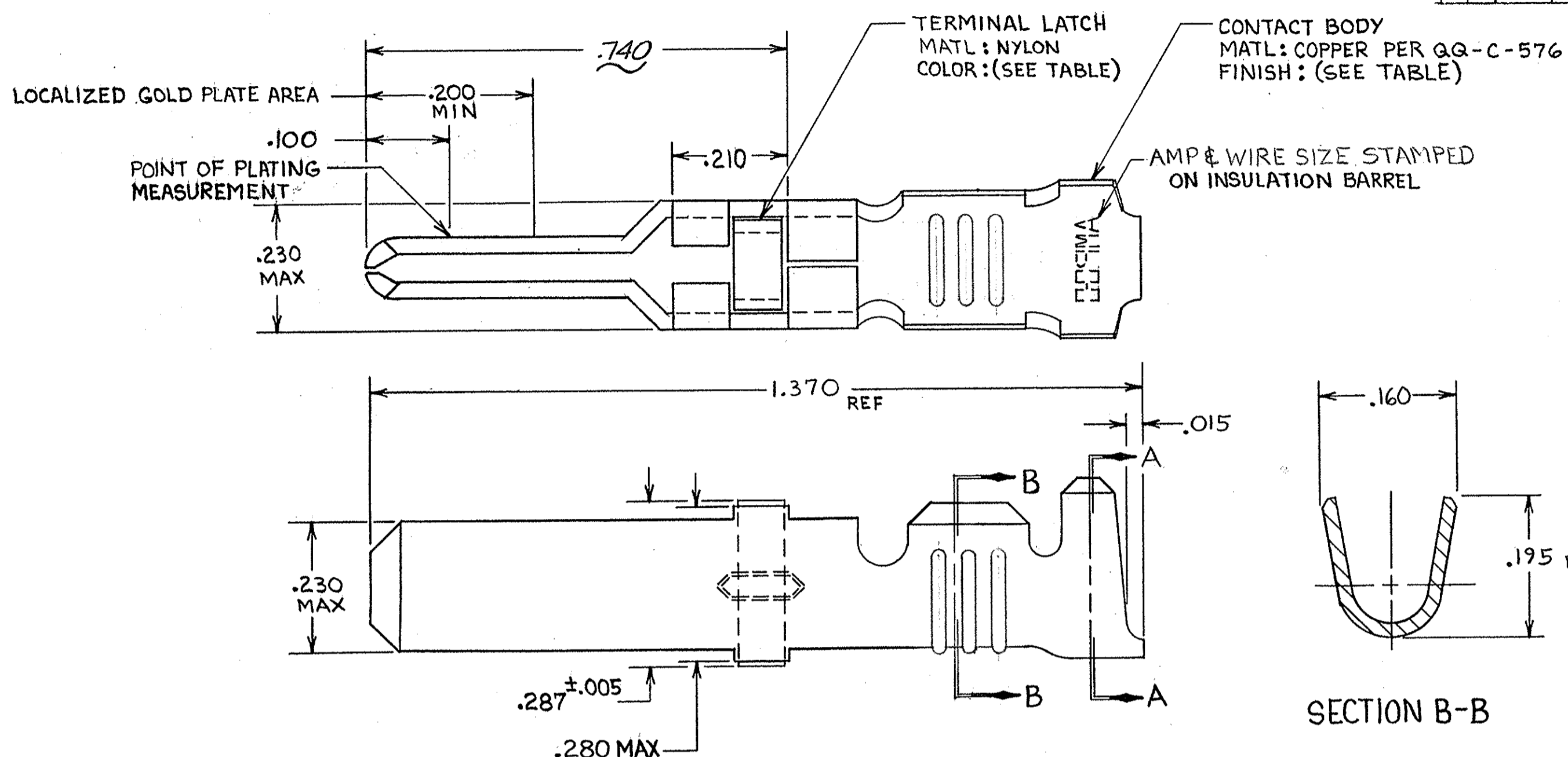


THIS DRAWING IS UNPUBLISHED. RELEASED FOR PUBLICATION, 19
 © COPYRIGHT 19 BY AMP INCORPORATED, HARRISBURG, PA. ALL INTERNATIONAL RIGHTS RESERVED. AMP PRODUCTS MAY BE COVERED BY U.S. AND FOREIGN PATENTS AND/OR PATENTS PENDING.

| REVISIONS | | | | | | |
|-----------|---|------|-----|----------------------------------|---------|----------|
| P | F | ZONE | LTR | DESCRIPTION | DATE | APPROVED |
| ✓ | ✓ | | L | REDRAWN & REVISED PER ECN R-1451 | 9-30-85 | REK SLB |
| ✓ | ✓ | | M | REV. / ECN R-1946 | 3-4-86 | MPH SLB |
| ✓ | ✓ | | N | OBSOLETE -3 PER R-2760 | 3-4-87 | SDG SLB |
| ✓ | ✓ | | P | REV PER 063D-269-03 | 5-03 | UAE |



- 1. REELED FOR USE WITH STANDARD APPLICATORS.
- 2. REELED FOR USE WITH HEAVY DUTY MINI-APPLICATORS.
- 3. PLATED WITH .000100 MIN SILVER PER QQ-S-365.
- 4. PLATED WITH .000015 MIN GOLD PER MIL-G-45204 IN THE LOCALIZED GOLD PLATE AREA; GOLD FLASH ON THE REMAINDER, OVER .000030 MIN NICKEL PER QQ-N-290.
- 5. PLATED WITH .000030 MIN GOLD PER MIL-G-45204 IN THE LOCALIZED GOLD PLATE AREA, GOLD FLASH ON THE REMAINDER, OVER .000030 MIN NICKEL PER QQ-N-290.
- 6. PLATED WITH .000050 MIN 93-7% TIN-LEAD ALLOY OVER .000030 MIN NICKEL PER QQ-N-290.
- 7. WIRE RANGE = 12-16 AWG.
- 8. INSULATION RANGE = .140-.165 DIA.
- 9. PLATED TIN (NO LEAD). 0.000050 MIN THK PER ASTM-B-545 OVER NICKEL. 0.000030 MIN THK PER QQ-N-290.

| TERMINAL LATCH COLOR | FINISH | STRIP ASS'Y P/N REF | STRIP ASS'Y P/N REF | LOOSE PIECE P/N REF |
|----------------------|--------|---------------------|---------------------|---------------------|
| BLACK | 4 | 66256-9/2 | 66256-8 | 66262-5 |
| NATURAL | 3 | | 66256-6 | 66262-4 |
| BLACK | 4 | | OBSOLETE | 66262-3 |
| BLACK | 5 | 66256-4 | 66256-2 | 66262-2 |
| BLACK | 6 | 66256-5 | 66256-1 | 66262-1 |

| | | | | |
|--|--|--------------------------------------|--|-------------------------|
| UNLESS OTHERWISE SPECIFIED DIMENSIONS ARE IN INCHES. TOLERANCES ON: DECIMALS ±.010 ANGLES ±.010 | CONTRACT NO | | AMP AMP INCORPORATED Harrisburg, Pa. 17105 | |
| | MATERIAL SEE CALLOUT | DR <i>Rick Rohlbaugh</i> 9-27-85 | | |
| FINISH SEE DASH NO | CHG <i>Larry J. Lawrence</i> 10-25-85 | APPD <i>S. J. Boland</i> 10-25-85 | SIZE C | FSCM NO 00779 |
| | APPD <i>James E. Smith</i> 10-28-85 | DSGN APPD | DRAWING NO 66262 | SHEET |
| | OTHER APPD | SCALE NTS | | |

66262