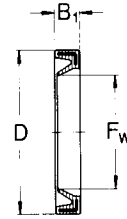
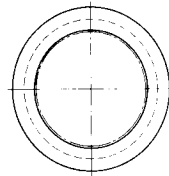
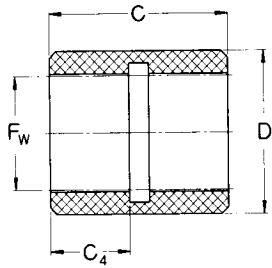


# LPBR linear plain bearings,

closed design

F<sub>w</sub> 12-50 mm



Linear plain bearing LPBR

Special seal

Dimensions				Basic load ratings			Mass	Designation	Appropriate special seals			
P <sub>w</sub>	D -0,07	C	C <sub>4</sub>	dyn. at 0,1 m/s 4 m/s		stat.	Linear plain bearing	Dimensions			Designation	
				C	C	C <sub>0</sub>		F <sub>w</sub>	D	B <sub>1</sub>		
mm				N			kg	mm				
<b>12</b>	19,19	28	10	965	24	3 350	0,006	<b>LPBR 12</b>	12	19	3	G 12x19x3
<b>16</b>	24,23	30	12	1 530	38	5 400	0,009	<b>LPBR 16</b>	16	24	3	G 16x24x3
<b>20</b>	28,24	30	13	2 080	52	7 350	0,011	<b>LPBR 20</b>	20	28	4	G 20x28x4
<b>25</b>	35,25	40	17	3 400	85	12 000	0,024	<b>LPBR 25</b>	25	35	4	G 25x35x4
<b>30</b>	40,27	50	20	4 800	120	17 000	0,033	<b>LPBR 30</b>	30	40	4	G 30x40x4
<b>40</b>	52,32	60	24	7 650	193	27 000	0,063	<b>LPBR 40</b>	40	52	5	G 40x52x5
<b>50</b>	62,35	70	27	10 800	270	38 000	0,088	<b>LPBR 50</b>	50	62	5	G 50x62x5

Other sizes and dimensions are available on request.