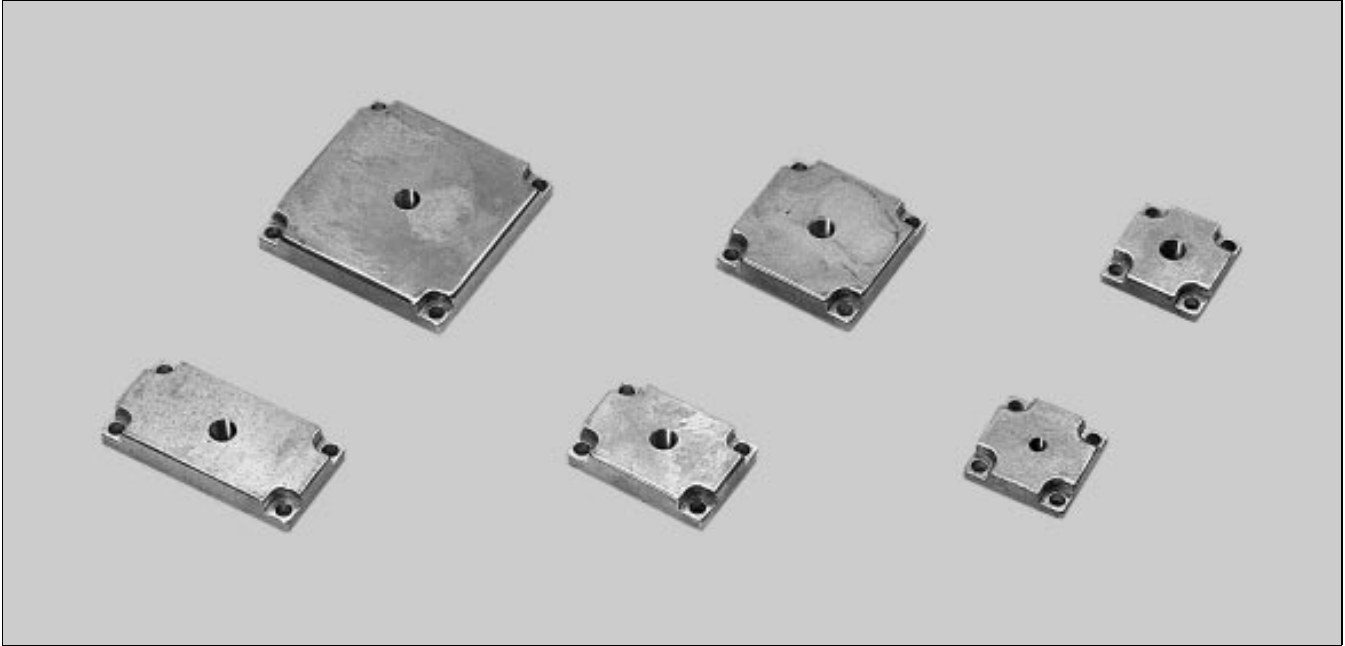


Feet – end plates



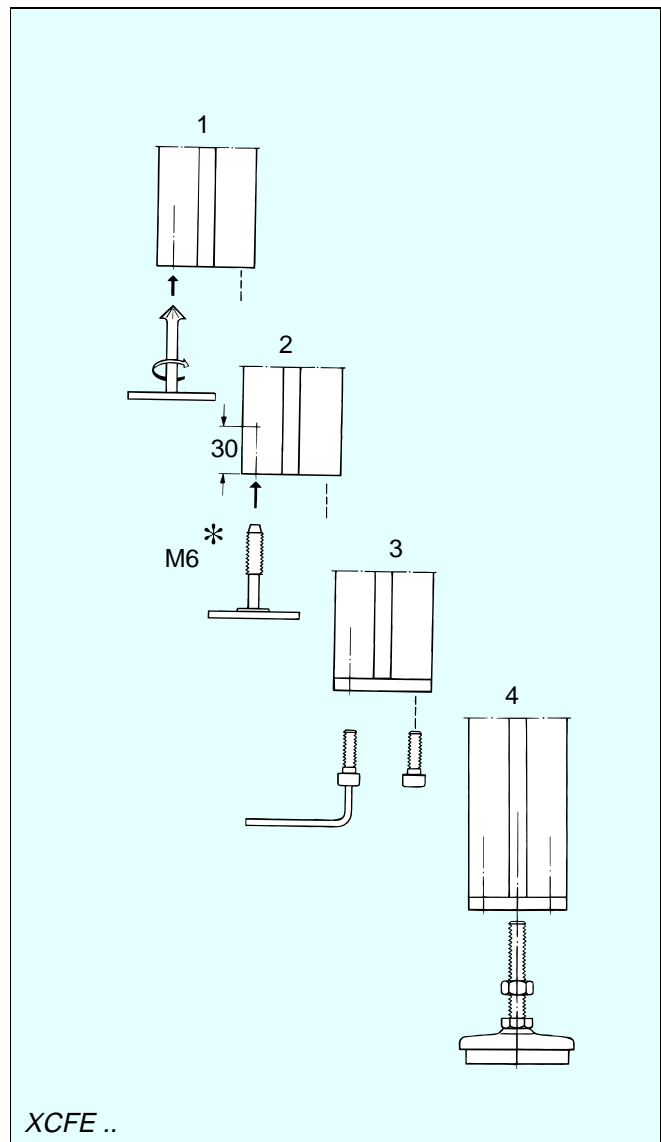
Description

End plates

End plates are screwed onto beam ends to provide attachments for the feet. The holes in the beam cross-section must be de-burred and threaded (M6).

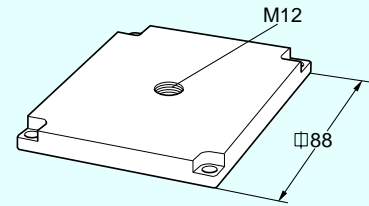
The end plates with an M12 threaded hole are intended for the XCFS 12×68 foot, and for guide rollers XCAG 80 A/80 BA. End plate XCFE 44 M8 is intended for the XLFS 8 foot.

*Note. M6 roller threading. It is also possible to use a selftapping screw (MC6S-TT 8×30, see catalogue section *Fasteners*). In this case, no threading is required.

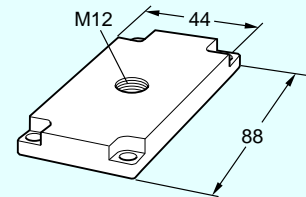


End plates

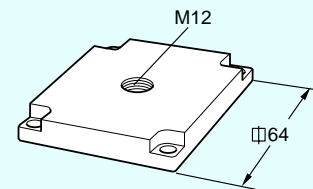
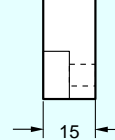
XCFE 88 M12A End plate for beam
XCBL/XCBM ...x88
M12 thread
Zinc, die-cast
Mounting:
MC6S 6x30 (4)



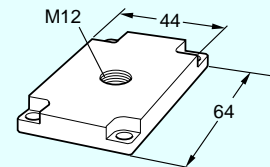
XCFE 44x88 M12A End plate for beam
XCBL/XCBM ...x44x88
M12 thread
Zinc, die-cast
Mounting:
MC6S 6x30 (4)



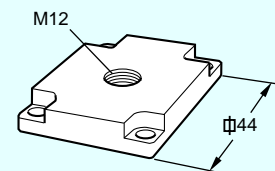
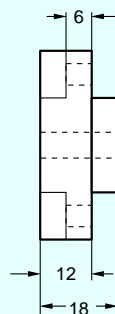
XCFE 64 M12A End plate for beam
XCBL/XCBM ...x64
M12 thread
Zinc, die-cast
Mounting:
MC6S 6x30 (4)



XCFE 44x64 M12A End plate for beam
XCBL/XCBM ...x44x64
M12 thread
Zinc, die-cast
Mounting:
MC6S 6x30 (4)



XCFE 44 M12 End plate for beam
XCBL ...x44
M12 thread
Zinc, die-cast
Mounting:
MC6S 6x30 (4)



XCFE 44 M8 End plate for beam
XCBL ...x44
M8 thread
Zinc, die-cast
Mounting:
MC6S 6x30 (4)

