



MULTITEC CASES SUPPLEMENT TO METAL CATALOGUE

1999



FOR WALLS...



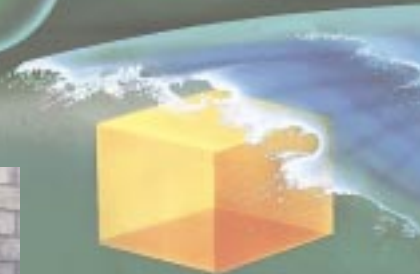
EASY ACCESS



FOR PANELS...



FOUR SIZES



## APPLICATIONS

Security, medical, process control, building access, test and measurement, machine control, data management, alarm and detection equipment.

## SIZES

Outside dimensions in mm.

	H	W	D
S	150	150	65
SL	150	250	65
M	250	250	100
L	250	350	100

## MATERIAL

Case body and rear panel, aluminium

## SUPPLY

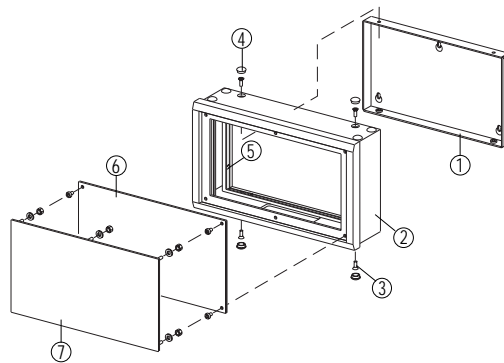
- ① Rear panel
- ② Case body
- ③ 4 rear panel fixings
- ④ 12 nylon cover plugs
- ⑤ 8 copper contacts
- ⑥ Front fixing front panel (accessory)
- ⑦ Rear fixing front panel (accessory)

## STANDARD COLOURS

Case body, painted with fine texture powder polyester paint 75-105µm light grey RAL 7035.  
Rear panel, natural aluminium.

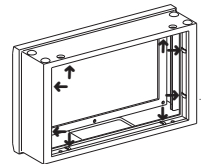
## ACCESSORIES

Front fixing or rear fixing front panels, panel mounting frame and extra copper contacts. See page 4.

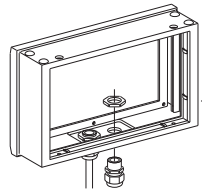


## ASSEMBLY

The case body is supplied pre-assembled and painted. Accessory front panels are mounted to the recessed front flange which is masked free of paint. The rear panel locates snugly into a large aperture in the case body; four M4 screws pass through the top and bottom of the body to secure it to the rear panel; copper contacts ensure electrical contact and EMC shielding between these two parts. A pocket is provided in the body for mounting connectors and cable glands. Nylon plugs are supplied to hide all fixings.



Copper contact fingers



Pocket for cable connections

## FAST, ROBUST AND VERSATILE WALL MOUNTING

Multitec cases are designed to allow access from all sides when mounting the electronics to a wall. For example, the rear panel can be fitted to the wall first allowing cables to be terminated before fitting the case body and front panels.

Two types of front panel are available:

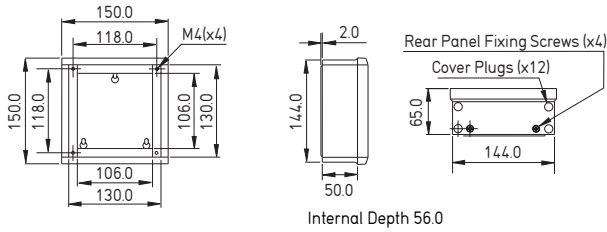
- Front fixing for fast and easy access from the front. With anodised finish for printing your control legends, logo etc.
- Rear fixing for mounting membrane keyboards directly, with no visible fixings and EMC contact.

Multitec cases can also be flush mounted to a control panel, wall pocket, floor duct or bulkhead using the panel mounting frame accessory on page 4.

## CUSTOMISING

Special sizes and colours, silk screen printing and machining of holes to suit your connectors and controls. Ask our sales team for a quotation.

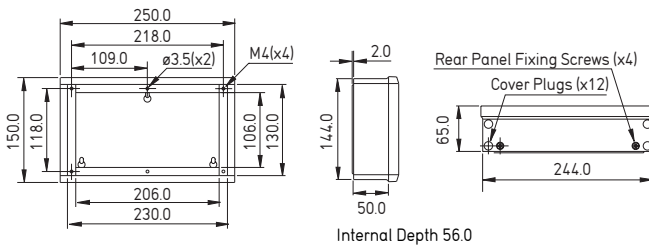
## SIZE S



Part No.

M52 15 105

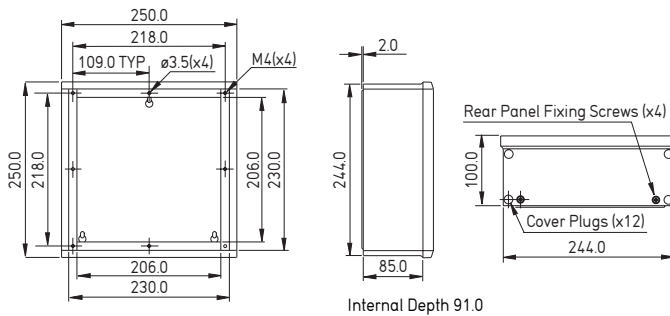
## SIZE SL



Part No.

M52 16 105

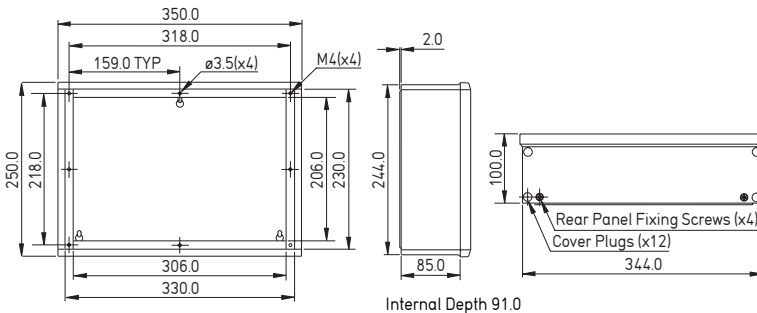
## SIZE M



Part No.

M52 25 205

## SIZE L



Part No.

M52 35 205

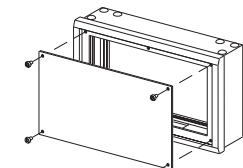
For more dimensions request our customer CAD drawings.

## FRONT FIXING FRONT PANELS

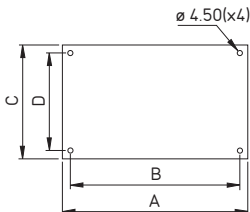
For fast access from the front. 2mm anodised aluminium. M4 fixings supplied with the cases.

Part No.

M52 15 601
M52 16 601
M52 25 601
M52 35 601



For case	Panel dimensions in mm.			
	A	B	C	D
S	129	118	129	118
SL	229	218	129	118
M	229	218	229	218
L	329	318	229	218

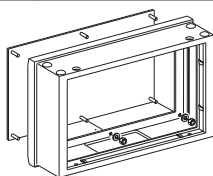


## REAR FIXING FRONT PANELS

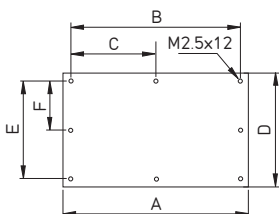
Designed for membrane keyboards. 2mm natural aluminium. M2.5 fixings supplied with the cases.

Part No.

M52 15 610
M52 16 610
M52 25 610
M52 35 610



For case	Panel dimensions in mm.					
	A	B	C	D	E	F
S	128.5	118	-	128.5	118	-
SL	228.5	218	109	128.5	118	-
M	228.5	218	109	228.5	218	109
L	328.5	318	159	228.5	218	109

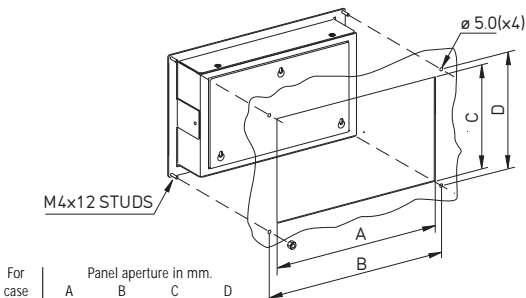


## PANEL MOUNTING FRAME

For flush fitting the case to control panels, wall pockets, bulkheads etc. Secured through the same holes as the rear panel. Replacement M4 screws and nuts are supplied. Aperture dimensions given below.

Part No.

M52 15 101
M52 16 101
M52 25 101
M52 35 101



For case	Panel aperture in mm.			
	A	B	C	D
S	150	162.5	150	162.5
SL	250	262.5	150	162.5
M	250	262.5	250	262.5
L	350	362.5	250	262.5



## EXTRA CONTACTS

Each case is supplied with a strip of eight self-adhesive copper contacts for connection between the rear panel and case body. Extra strips of eight can be ordered to increase the EMC shielding.

Part No.

M52 00 003
------------

OKW Enclosures Ltd.  
Unit 6, Kingdom Close,  
Segensworth East, Fareham,  
Hampshire, PO15 5TJ, UK

Telephone: (01489) 583858  
Fax: (01489) 583836  
Email: sales@okw.co.uk  
Web site: www.okw.co.uk



Presented by: