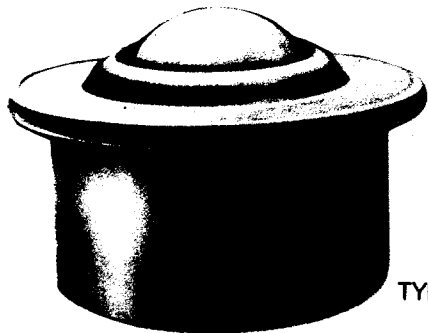
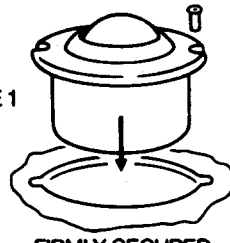


EURO UNITS



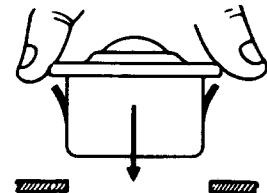
TYPE 0

TYPE 1

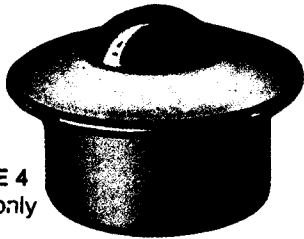


FIRMLY SECURED WITH POP RIVETS OR SCREWS.

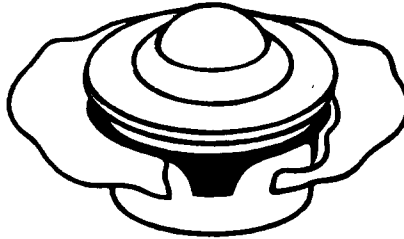
TYPE 2



JUST PUSH THROUGH PLATE

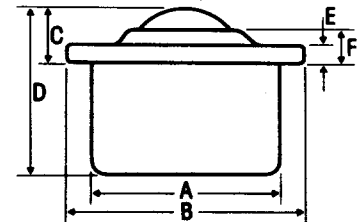


TYPE 4
Model 522 only

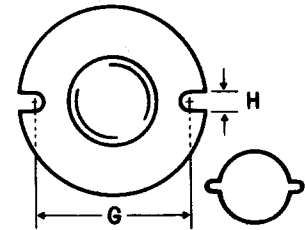


- INSERT CLIP
 - INSERTION LOCKS UNIT
 - PUSH IN - PRISE OUT
- CLIP REF. CL14

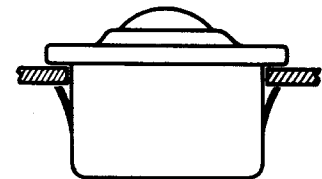
Ball Size	Type	Specification	Ref. No.	Capacity		Kg Approx Weight	DIMENSIONS M/M										
				N	Kg		A	B	C	D	E	F	G	H			
15mm	0	Steel	515-0-13	500	45	.038											
	0	Nylon ball	515-0-14	70	10	.024	24	31	9.5	21	2.8	6.3	-	-			
	0	Completely S/st.	515-0-15	370	35	.038											
	0	S/st brgs steel body	515-0-16	370	35	.038											
TO ORDER TYPE 1 USE REF. 515-1																	
22mm	0	Steel	522-0-13	1300	120	.132											
	0	Nylon ball	522-0-14	100	20	.093	36	45	9.8	30	2.8	5.5	42	3.5			
	0	Completely S/st.	522-0-15	970	90	.132											
	0	S/st brgs steel body	522-0-16	970	90	.132											
TO ORDER TYPE 1 OR 2 USE REF. 522-1 OR 522-2																	
22mm	0	Steel	522-4-13	1300	120	.132											
	0	Nylon ball	522-4-14	100	20	.093	36	45	9.8	30	2.8	5.5	42	3.5			
	0	Completely S/st.	522-4-15	970	90	.132											
	0	S/st brgs. steel body	522-4-16	970	90	.132											
TO ORDER TYPE 2 USE REF. 522-4-13 CLIP 2																	
30mm	0	Steel	530-0-13	2500	230	.265											
	0	Nylon ball	530-0-14	150	25	.168	45	55	13.8	37	4	8.3	51	3.5			
	0	Completely S/st.	530-0-15	1900	175	.265											
	0	S/st brgs steel body	530-0-16	1900	175	.265											
TO ORDER TYPE 1 OR 2 USE REF. 530-1 or 530-2																	
45mm	0	Steel	545-0-13	6000	550	.720											
	0	Nylon ball	545-0-14	-	-	-	62	75	19	53.5	4	10	69	4.3			
	0	Completely S/st.	545-0-15	-	-	.250											
	0	S/st brgs steel body	545-0-16	4500	410	.720											
TO ORDER TYPE 1 USE REF. 545-1																	



HOLE DIAMETER (See table below)
TYPE 0 · 15,22,30,45 UNITS



SLOTTED HOLE REQUIRED.
SEE BELOW
TYPE 1 · 15,22,30,45 UNITS



TYPE 2 · 22,30 UNITS



CLIP CL 14
522 & 530 UNITS

BALL UNIT	15	22	30	45
RIVET DIA.		3/2		4

HOLE SIZES FOR UNITS			
15mm	22mm	30mm	45mm
24 ^{+1.0} _{+1.5}	36 ^{+1.0} _{+1.5}	45 ^{+1.0} _{+1.5}	62 ^{+1.0} _{+1.5}

The main bearing cup is of special toughened steel with a self cleaning hole and a felt or plastic seal is incorporated in all EURO units except 15mm.
Felt seal standard. Maximum temp +100°C -70°C. Polyurethane foam on request. Maximum temp. +70°C, minimum temp. not available.
Maximum temperature: Steel and Stainless. No Seal. +100°C to +150°C intermittent.

MATERIAL SPECIFICATION: STAINLESS STEEL: TYPE AISI 304
STAINLESS STEEL BEARINGS: TYPE AIS1420
NYLON BALLS: NYLON 66