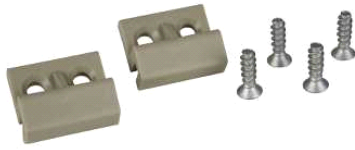


NSYAEDPLA001

Rod guide inside the PLA door(set of 2)



Main

Range	Thalassa
Product or component type	Rod guide
Device application	Multi-purpose
For enclosure nominal dimensions	
Mounting location	On door
Range compatibility	Thalassa PLA enclosure
Device composition	Fixing screws 2 x guide
Quantity per set	Set of 1

Complementary

Material	Plastic for guide
Fixing mode	Screw - door location

Environment

Offer Sustainability

Sustainable offer status	Not Green Premium product
--------------------------	---------------------------

Contractual warranty

Warranty period	18 months
-----------------	-----------

The information provided in this documentation contains general descriptions and/or technical characteristics of the products contained herein. This documentation is not intended as a substitute for and is not to be used for determining suitability or reliability of these products for specific user applications. It is the duty of any such user or integrator to perform the appropriate and complete risk analysis, evaluation and testing of the products with respect to the relevant specific application or use thereof. Neither Schneider Electric Industries SAS nor any of its affiliates or subsidiaries shall be responsible or liable for misuse of the information contained herein.