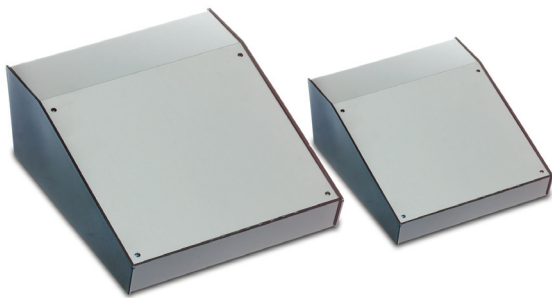


# DESKTOP & INSTRUMENT CASES

## 6000 Series Venti Cases

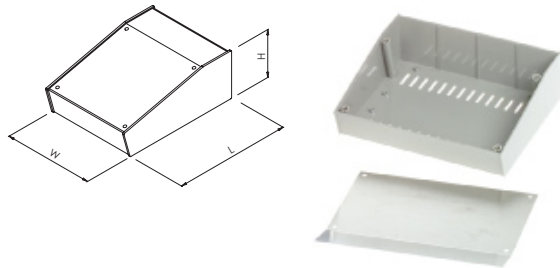
ABS desk cases available with inclined recessed aluminium front panels.

- Moulded in high impact ABS
- Aluminium lid mounted by 4x M3 screws
- Polished finish for ease of cleaning
- PCB pillars in base
- Integral PCB slots in front and rear walls
- Ventilation slots in base



SPECIFICATION	
Materials	Base high impact ABS as standard, UL94-V0 ABS to order Panels 1mm thick aluminium
Operating temperature	Resistant to temperatures up to 85°C
Standard colours	Base grey & black as standard, white to order Aluminium panel grey
Standard unit includes	Base & aluminium panel 4x M3 machine screws 4x rubber feet

BLACK	GREY	LENGTH	WIDTH	HEIGHT
BIM6005-BLK/PG	BIM6005-GY/PG	143mm	105mm	55mm
BIM6006-BLK/PG	BIM6006-GY/PG	143mm	170mm	55mm
BIM6007-BLK/PG	BIM6007-GY/PG	214mm	170mm	82mm



## 2600/2700 Series Terminal Cases

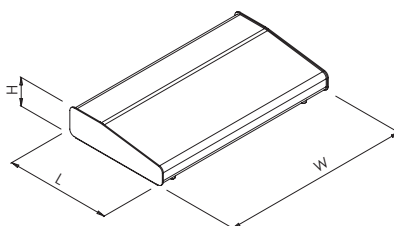
Ideal enclosures for laboratory equipment, keyboard, access & security applications.

- 2 part aluminium construction
- Easy assembly with 4x M3 screws running through rubber feet into base
- 4x rubber feet supplied as standard



SPECIFICATION	
Material	Base 2mm thick aluminium Lid 1.6mm thick aluminium
Protection class	IP40
Standard colours	Top beige as standard Base brown as standard Other colours available to order
Standard unit includes	Lid & base 4x M3 machine screws 4x rubber feet

TYPE NO.	LENGTH	WIDTH	HEIGHT
RTM2601-BR/B	210mm	178mm	55mm
RTM2602-BR/B	210mm	280mm	55mm
RTM2603-BR/B	210mm	381mm	55mm
RTM2604-BR/B	210mm	483mm	55mm
RTM2701-BR/B	210mm	178mm	80mm
RTM2702-BR/B	210mm	280mm	106mm
RTM2703-BR/B	210mm	381mm	106mm
RTM2704-BR/B	210mm	483mm	106mm



UNIVERSAL ENCLOSURES

HAND HELD CASES

HEAVY DUTY ENCLOSURES

DIN RAIL BOXES

INTERFACE SUPPORTS

CONTROL STATIONS

DIECAST & METAL BOXES

DESKTOP & INSTRUMENT CASES

POTTING BOXES

19" ENCLOSURES

19" CABINETS

DEVELOPMENT BOARDS

CUSTOM SIZED ENCLOSURES

CUSTOM SERVICES



+44 (0)1638 716101  
info@camdenboss.com  
www.camdenboss.com

We operate a constant improvement policy,  
our products are subject to change without notice.

Ver 1.0 Iss 1

**CAMDENBOSS**  
ELECTRONICS & ENCLOSURES