

FRONT PANEL KIT

These panels fit directly to the front bezels and are recessed for convenient mounting of membrane keyboards, display modules, control switches etc.

Two trims are supplied with each kit. These clip on to the front panels and hide the fixing screws for a clean frontal appearance. They also give a location area for membrane keyboards.

Material:

Front panel anodised aluminium, 2 mm.
Trims in ABS, light grey
RAL 7035.

Supply:

1 front panel
(four M3x6 mm pozi screws supplied with each case for mounting these panels)
2 trims

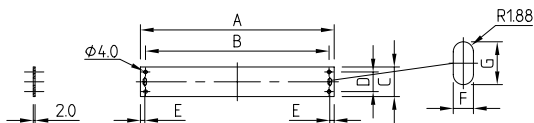


SEPARATE TRIMS

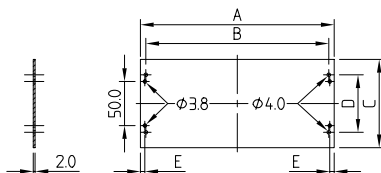
Two plastic trims are supplied with each front panel kit, however, for custom front panels the trims can be ordered as separate items.

Supply:
1 trim

for case height 50 / 85 mm



for case height 120 / 150 mm



FRONT PANEL KIT

For case ... Height	Width	Panel dimensions in mm							
		A	B	C	D	E	F	G	
M 57 00 601	50	160	129.5	118	33.6	22.3	5.75	3.8	8.2
M 57 00 607	50	230	199.5	188	33.6	22.3	5.75	3.8	8.2
M 57 00 612	50	250	219.5	208	33.6	22.3	5.75	3.8	8.2
M 57 00 617	50	350	319.5	308	33.6	22.3	5.75	3.8	8.2
M 57 00 602	85	160	129.5	118	65.1	30.8	5	3.8	15.2
M 57 00 608	85	230	199.5	188	65.1	30.8	5	3.8	15.2
M 57 00 613	85	250	219.5	208	65.1	30.8	5	3.8	15.2
M 57 00 618	85	350	319.5	308	65.1	30.8	5	3.8	15.2
M 57 00 610	120	230	199.5	188	100.1	65.8	5	-	-
M 57 00 615	120	250	219.5	208	100.1	65.8	5	-	-
M 57 00 620	120	350	319.5	308	100.1	65.8	5	-	-
M 57 00 616	150	250	219.5	208	130.1	95.8	5	-	-
M 57 00 621	150	350	319.5	308	130.1	95.8	5	-	-

SEPARATE TRIMS (for customised front panels)

For case height	Supply	
M 57 00 020	50 mm	1 piece (2 pieces required)
M 57 00 021	85 mm	1 piece (2 pieces required)
M 57 00 022	120 mm	1 piece (2 pieces required)
M 57 00 024	150 mm	1 piece (2 pieces required)