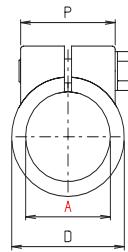
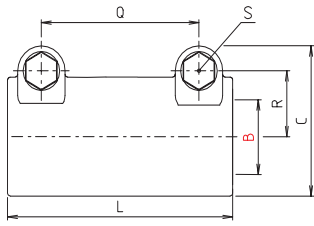


Muffenklemmstücke Sleeve clamps

Industrieform

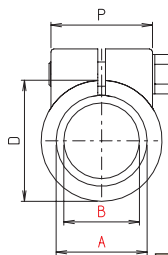
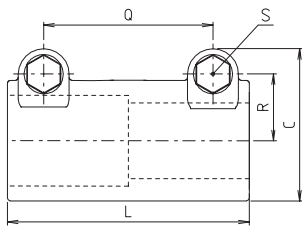
Industrial design

M



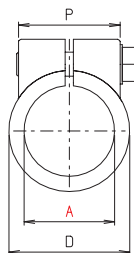
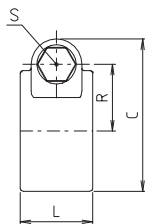
Code-No.	Type	A	B	C	D	L	P	Q	R	S	m [g]
142 000 000_ _ _	M 20	20	20,1	50	40	80	33	56	22	M8x35	254
142 500 000_ _ _	M 25	25,1	25,1	50	40	80	33	56	22	M8x35	215
143 000 000_ _ _	M 30	30,1	30,1	50	40	80	33	56	22	M8x35	173
143 500 000_ _ _	M 35	35,15	35,15	70	56	120	48	84	29	M10x50	589
144 000 000_ _ _	M 40	40,15	40,15	70	56	120	48	84	29	M10x50	505
144 800 000_ _ _	M 48	48,2	48,2	78	66	140	58	98	33	M10x60	738
145 000 000_ _ _	M 50	50,2	50,2	78	66	140	58	98	33	M10x60	702

MD



Code-No.	Type	A	B	C	D	L	P	Q	R	S	m [g]
143 025 010_ _ _	MD 30x25	30,1	25,1	50	40	80	33	56	22	M8x35	196
144 032 010_ _ _	MD 40x32	40,15	32,15	70	56	120	48	84	29	M10x50	575
144 840 010_ _ _	MD 48x40	48,2	40,2	78	66	140	58	98	33	M10x60	848
145 040 010_ _ _	MD 50x40	50,2	40,2	78	66	140	58	98	33	M10x60	819

MH



Code-No.	Type	A	C	D	L	P	R	S	m [g]
142 000 020_ _	MH 20	20	50	40	24	33	22	M8x35	89
143 000 020_ _	MH 30	30,1	50	40	24	33	22	M8x35	63
144 000 020_ _	MH 40	40,15	70	56	36	48	29	M10x50	177
145 000 020_ _	MH 50	50,2	78	66	42	58	33	M10x60	239

Bestellhinweise siehe Seite 6-7 Order instructions see page 6-7