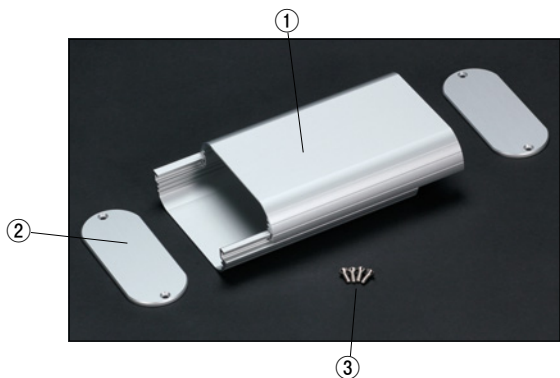


MXA SERIES

MXA ALUMINIUM MOBILE ENCLOSURE



FEATURE

- Colorful combination of the aluminum extrusion body and end panels are selectable in 14 types.
Choose a suitable one according to your individual application in 30 sizes and in 14 color combinations.
- Digital audio amplifiers, communication devices, measurement tools, and so on, it is the best enclosure for any kind of portable devices.
- PCB is able to mount horizontally by sliding into the enclosure.
- "D" length can be customized on your request.
Ask for the details on your customized enclosure.

Components

Ref. #	Part name	Pcs	Material	Color / Finish
1	Frame	2	Aluminium extrusion	Silver - Black / Anodized
2	Panel	2	Aluminium t3.0	Anodized / Hair-line finish
3	Self-tapping screw	4	Steel	Nickel plated · Black trivalent chromate

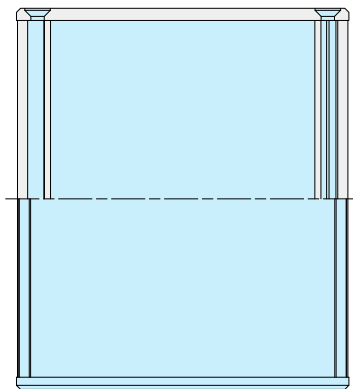
Color Code

Selectable in 14 color combinations listed below.

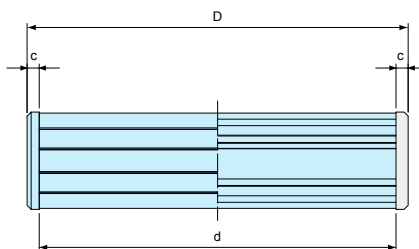
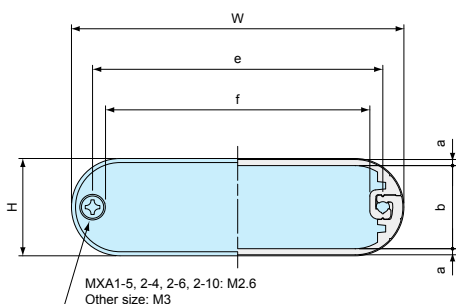


MXA dimensions

• CAD data is downloadable from our website.



• Refer to the page 109 to 112 for the panel and frame details.



Please request / order by indicating the combination part number as below.

MXA 1 - 5 - 6 □ □ □
Color code Screw P or H

Screw Type

P	H
Plus head	Hexalobular head

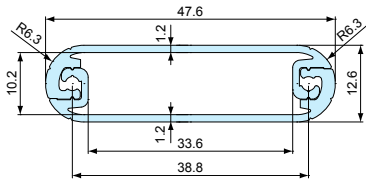
Part no. / Dimensions

Part no.	H	W	D	a	b	c	d	e	f	Weight(g)
MXA1- 5- 5□□□	13	48	49	1.2	10.2	3	43	38.8	33.6	25
MXA1- 5- 8□□□	13	48	79	1.2	10.2	3	73	38.8	33.6	40
MXA1- 5- 11□□□	13	48	109	1.2	10.2	3	103	38.8	33.6	55
MXA2- 4- 4□□□	15	41	44	1.2	12.2	3	38	31.8	26.6	25
MXA2- 4- 7□□□	15	41	74	1.2	12.2	3	68	31.8	26.6	40
MXA2- 4- 10□□□	15	41	104	1.2	12.2	3	98	31.8	26.6	50
MXA2- 6- 5□□□	18	57	46	1.2	15.1	3	40	47.7	42.5	35
MXA2- 6- 7□□□	18	57	71	1.2	15.1	3	65	47.7	42.5	50
MXA2- 6- 10□□□	18	57	96	1.2	15.1	3	90	47.7	42.5	65
MXA2- 7- 5□□□	20	70	54	1.5	16.5	3	48	59.6	53.2	55
MXA2- 7- 8□□□	20	70	84	1.5	16.5	3	78	59.6	53.2	80
MXA2- 7- 11□□□	20	70	114	1.5	16.5	3	108	59.6	53.2	110
MXA2- 8- 6□□□	24	82	64	1.5	20.5	3	58	71.6	65.2	75
MXA2- 8- 9□□□	24	82	94	1.5	20.5	3	88	71.6	65.2	105
MXA2- 8- 12□□□	24	82	124	1.5	20.5	3	118	71.6	65.2	135
MXA2-10- 7□□□	16	100	74	1.2	13.2	3	68	90.8	85.6	70
MXA2-10-10□□□	16	100	104	1.2	13.2	3	98	90.8	85.6	100
MXA2-10-14□□□	16	100	144	1.2	13.2	3	138	90.8	85.6	135
MXA3-11- 7□□□	30	110	72	1.5	26.5	3	66	99.6	93.2	115
MXA3-11-11□□□	30	110	112	1.5	26.5	3	106	99.6	93.2	165
MXA3-11-16□□□	30	110	162	1.5	26.5	3	156	99.6	93.2	235
MXA4- 7- 5□□□	35	70	52	1.55	31.4	3	46	59.6	53.2	70
MXA4- 7- 8□□□	35	70	82	1.55	31.4	3	76	59.6	53.2	100
MXA4- 7- 11□□□	35	70	112	1.55	31.4	3	106	59.6	53.2	135
MXA4-10- 7□□□	40	95	70	1.55	36.4	3	64	84.6	78.2	120
MXA4-10-11□□□	40	95	110	1.55	36.4	3	104	84.6	78.2	175
MXA4-10-14□□□	40	95	140	1.55	36.4	3	134	84.6	78.2	220
MXA4-13- 9□□□	35	130	90	1.75	31	3	84	119.6	113.2	180
MXA4-13-14□□□	35	130	140	1.75	31	3	134	119.6	113.2	265
MXA4-13-20□□□	35	130	200	1.75	31	3	194	119.6	113.2	370

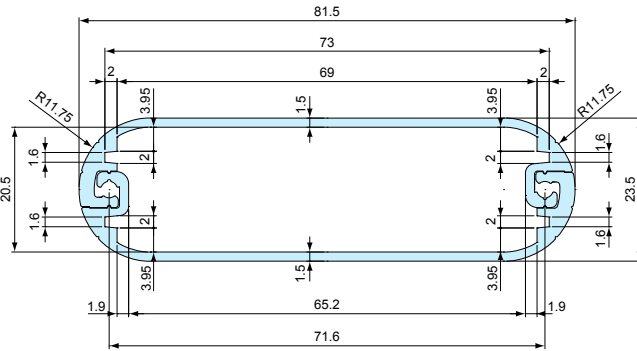
MX · MXA Component parts drawing

MX · MXA frame

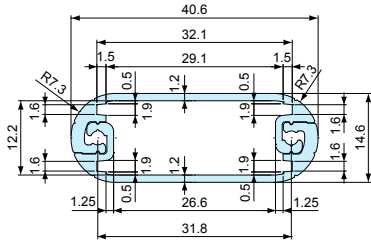
MX / MXA 1-5-□



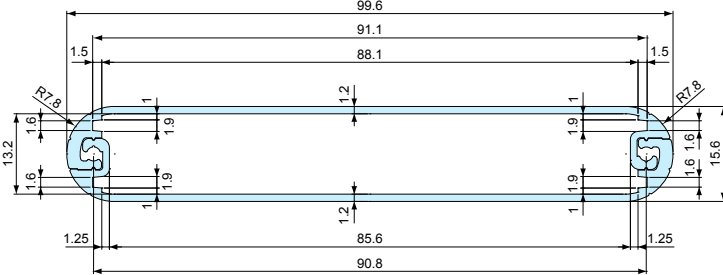
MX / MXA 2-8-□



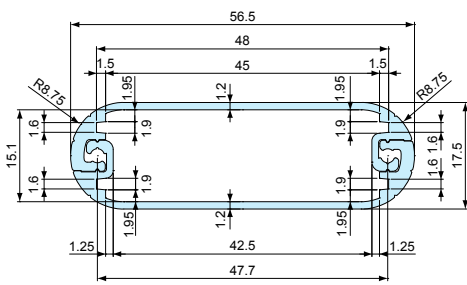
MX / MXA 2-4-□



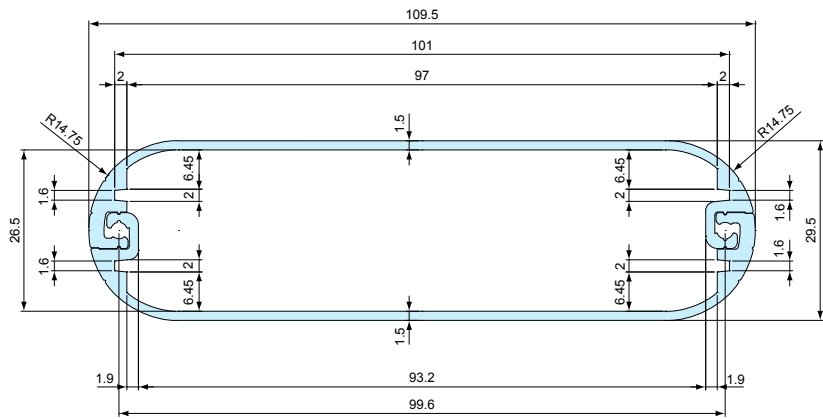
MX / MXA 2-10-□



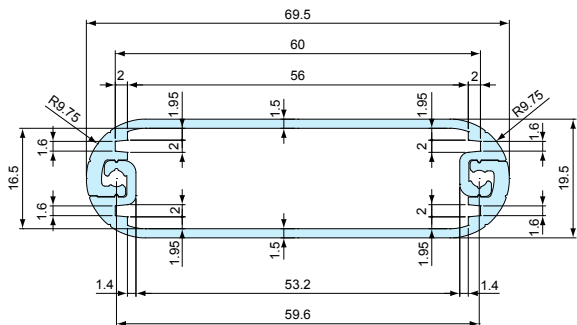
MX / MXA 2-6-□



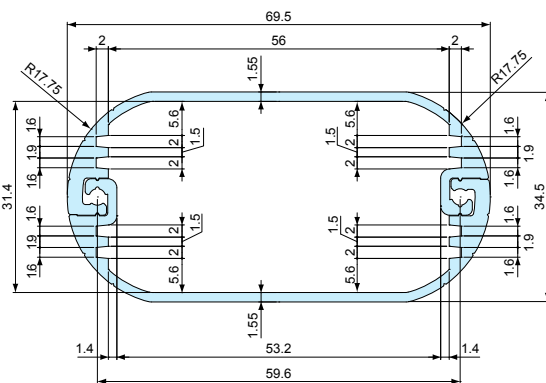
MX / MXA 3-11-□



MX / MXA 2-7-□

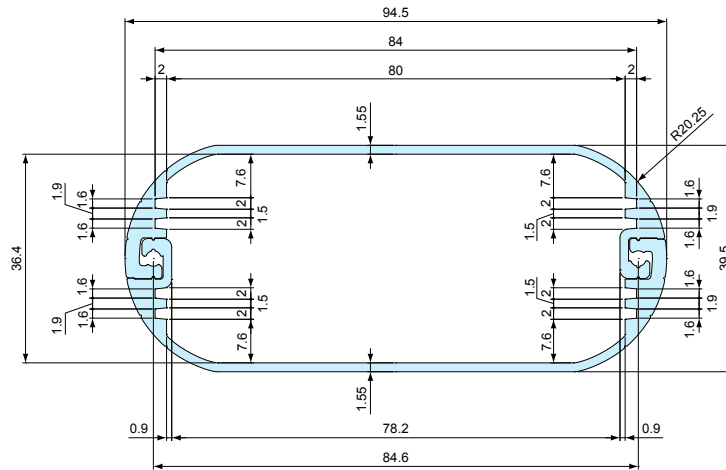


MX / MXA 4-7-□

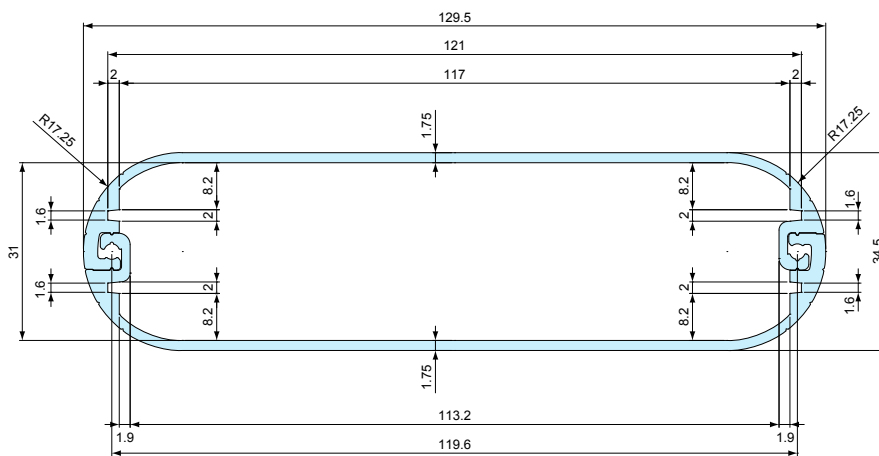


MX · MXA Component parts drawing

MX / MXA 4-10-□



MX / MXA 4-13-□

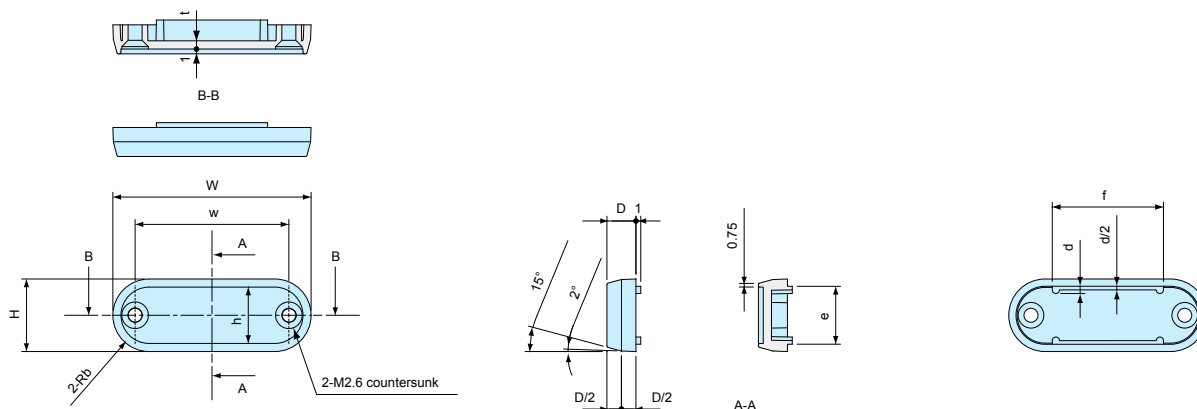


Part no.	Frame length
MX1- 5- 6	43
MX1- 5- 9	73
MX1- 5-12	103
MX2- 4- 5	38
MX2- 4- 8	68
MX2- 4-11	98
MX2- 6- 5	40
MX2- 6- 8	65
MX2- 6-10	90
MX2- 7- 6	48
MX2- 7- 9	78
MX2- 7-12	108
MX2- 8- 7	58
MX2- 8-10	88
MX2- 8-13	118
MX2-10- 8	68
MX2-10-11	98
MX2-10-15	138
MX3-11- 8	66
MX3-11-12	106
MX3-11-17	156
MX4- 7- 6	46
MX4- 7- 9	76
MX4- 7-12	106
MX4-10- 8	64
MX4-10-12	104
MX4-10-15	134
MX4-13-10	84
MX4-13-15	134
MX4-13-21	194

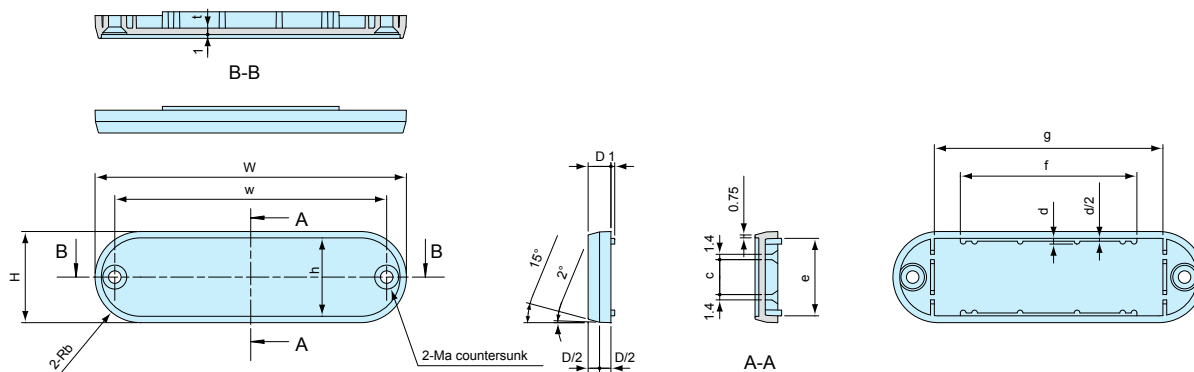
Part no.	Frame length
MXA1- 5- 5	43
MXA1- 5- 8	73
MXA1- 5-11	103
MXA2- 4- 4	38
MXA2- 4- 7	68
MXA2- 4-10	98
MXA2- 6- 5	40
MXA2- 6- 7	65
MXA2- 6-10	90
MXA2- 7- 5	48
MXA2- 7- 8	78
MXA2- 7-11	108
MXA2- 8- 6	58
MXA2- 8- 9	88
MXA2- 8-12	118
MXA2-10- 7	68
MXA2-10-10	98
MXA2-10-14	138
MXA3-11- 7	66
MXA3-11-11	106
MXA3-11-16	156
MXA4- 7- 5	46
MXA4- 7- 8	76
MXA4- 7-11	106
MXA4-10- 7	64
MXA4-10-11	104
MXA4-10-14	134
MXA4-13- 9	84
MXA4-13-14	134
MXA4-13-20	194

MX Component parts drawing

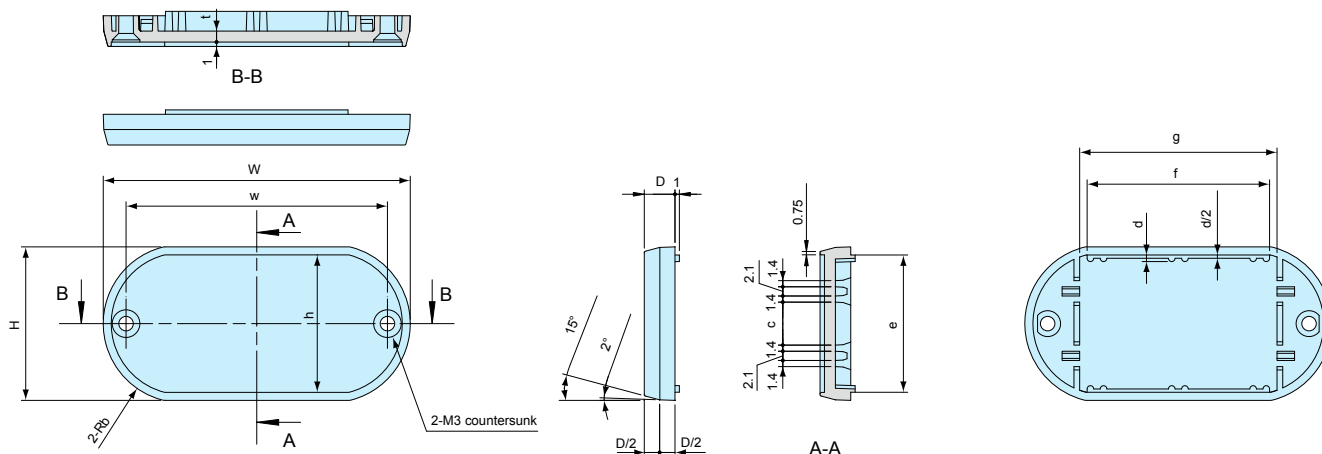
MX panel



Part no.	W	H	D	w	b	d	e	f	h	t
MX1- 5-□	48	13	6	38.8	6.5	1.5	10	32	9.6	1.7
MX2- 4-□	41	15	6	31.8	7.5	1.5	12	23	11.6	1.7
MX2-10-□	100	16	6	90.8	8	1.5	13	81	12.6	1.7



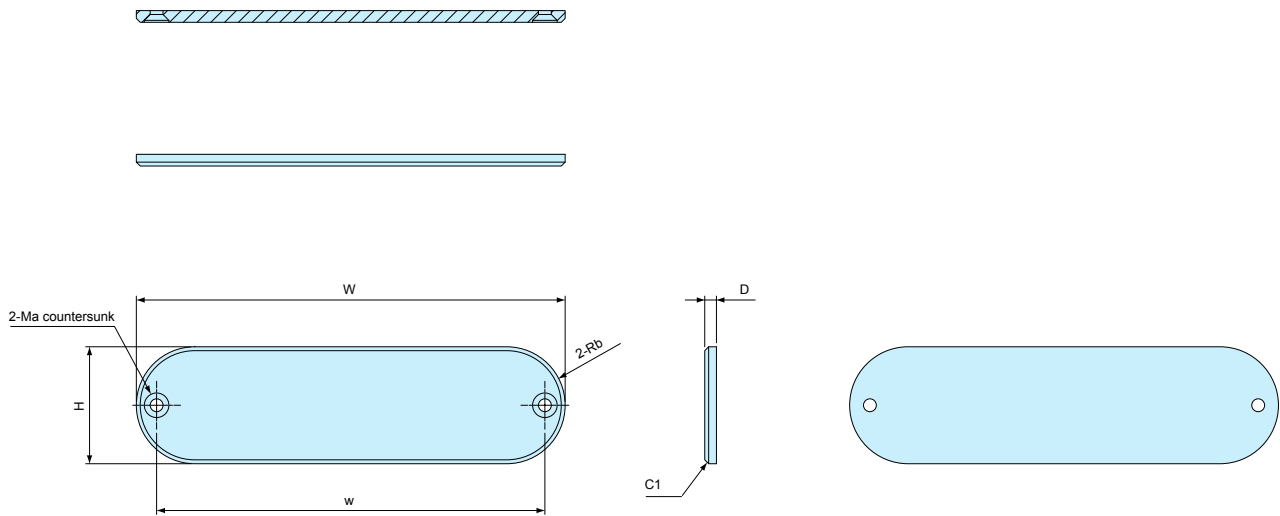
Part no.	W	H	D	w	a	b	c	d	e	f	g	h	t
MX2- 6-□	57	18	5	47.7	2.6	9	7.9	1.3	15	38.3	41.2	14.9	1.5
MX2- 7-□	70	20	6	59.6	3	10	9.2	1.5	16.3	49.5	52.6	16.6	1.7
MX2- 8-□	82	24	6	71.6	3	12	9.2	1.5	20.4	46.5	60.2	20.6	1.7
MX3-11-□	110	30	7	99.6	3	15	10.2	1.5	26.4	61.5	87.3	26.3	1.7
MX4-13-□	130	35	8	119.6	3	17.5	11.2	1.5	30.9	76.5	104.3	31	1.8



Part no.	W	H	D	w	b	c	d	e	f	g	h	t
MX4- 7-□	70	35	7	59.6	18	9.8	1.5	31.3	41.6	45	31.3	2.5
MX4-10-□	95	40	8	84.6	20.5	10.8	1.5	36.3	61.6	65	36	2.5

MXA Component parts drawing

MXA panel



Part no.	W	H	D	w	a	b
MXA1- 5-□	48	13	3	38.8	2.6	6.5
MXA2- 4-□	41	15	3	31.8	2.6	7.5
MXA2- 6-□	57	18	3	47.7	2.6	9
MXA2- 7-□	70	20	3	59.6	3	10
MXA2- 8-□	82	24	3	71.6	3	12
MXA2-10-□	100	16	3	90.8	2.6	8
MXA3-11-□	110	30	3	99.6	3	15
MXA4- 7-□	70	35	3	59.6	3	18
MXA4-10-□	95	40	3	84.6	3	20.5
MXA4-13-□	130	35	3	119.6	3	17.5

APPLICATION EXAMPLE

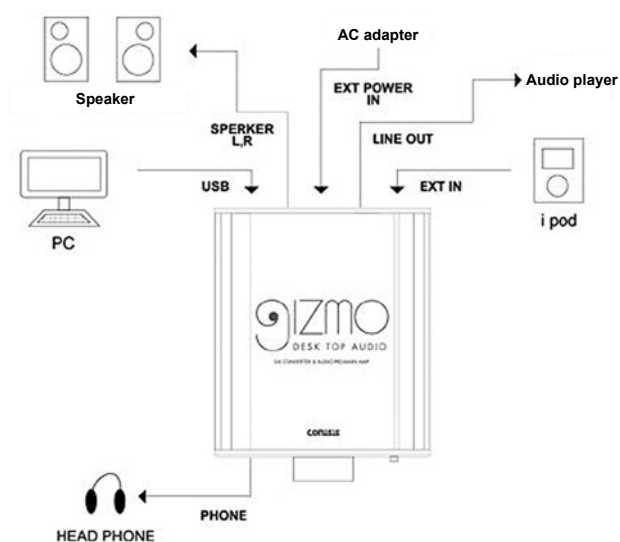
Desk-top audio preamplifier with USB port



MXA Mobile enclosure has a beautiful and elegant looking finish. It is dressed up with the hair-line anodized on the body surface, and a taper grinding finish on the end-panel edges. It is best for the stylish and high class audio device or amplifier.

Application

Compact desk-top audio amplifier makes a super powerful audio system if connecting to your PC. USB power supply is ready, and take your music anywhere. Moreover, you can connect iPod/iPad or portable players to this amplifier, and output to a variety of audio equipment. It build up your original audio system flexibly, and make your music life free.



Model railroad controller



Application

High efficiency performance controller which makes you feel real driving. By using the high and low RF signals, it makes your operation smoothly.

RTD Sensors tester



Application

RTD (Resistance Temperature Detector) are sensors used to measure the temperature by correlating the resistance of the RTD element with temperature.

This tester is used for checking the stability of RTD sensors.

Product by Turbomation
Website: turbomation.com

AIS (Automatic Identification System) Signal receiver



Product by SRT Marine System Solutions Ltd
Website: srt-marinesystems.com

Application

High quality signal receiver for AIS, Automatic Identification System to identify the ships and vessels on the ocean. Used for tracking and watching ships and vessels in EEZ (Exclusive Economic Zone).

Customize available



Contact us with your drawing

E-mail : sales@takachi-el.co.jp