





The OKW desk case range covers many different fields of application. In laboratories or in industry. As a control panel for control functions. Or as intercom equipment.

Choose a case that will fully meet your specific requirements concerning tilt and size of the control panel.

Easy and time-saving mounting of PCBs with moulded support pillars.

The rear section is raised giving space for easy installation of cable grommets and plug connectors.

We perform low-cost machining of the aluminium front panels according to your specific requirements.



MODIFICATIONS
AS PER
CUSTOMER'S
REQUIREMENTS

See pages 216-219.

DESK CASE 138

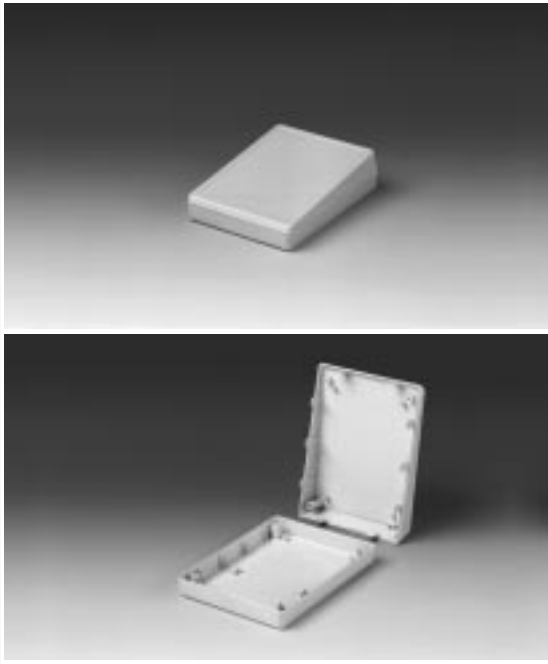


DESIGN

Two-part case with closed top. Control area recessed by 0.8 mm.

Fastening pillars for PCBs or keyboards in the top and base.

Case parts are assembled by 4 self-tapping screws.



Suitable for numerical keypads and membrane keyboards.

STANDARD COLOURS

Off-white, RAL 9002.

Black, RAL 9005.

Please refer to colour chart on page 220.

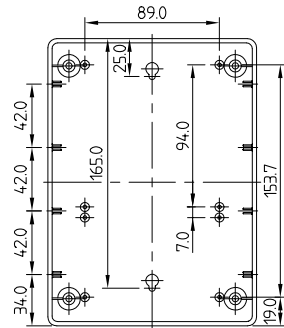
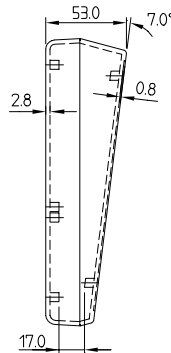
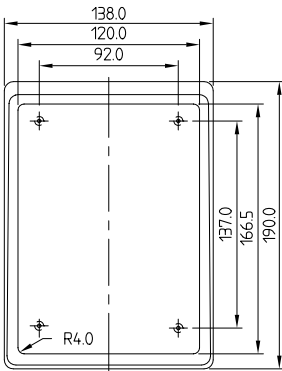
SPECIAL COLOURS

Any desired colour.

MATERIAL

ABS (UL 94 HB).

Also available in other materials on request. Please refer to the specifications on pages 221-223.



Outside dim. in mm		
W	D	H
138	190	53 / 32
138	190	53 / 32

Colour
off-white
black

Part No.
A 05 14 007
A 05 14 009

Wide range of applications as desk-top cases. Fine textured surface.

STANDARD COLOURS

DESK CASE 190:

Off-white, RAL 9002.

Black, RAL 9005.

DESK CASE 190 F / H:

Top part off-white, RAL 9002, base part pebble grey, RAL 7032.

Please refer to colour chart on page 220.

SPECIAL COLOURS

Any desired colour.

MATERIAL

ABS (UL 94 HB).

Also available in other materials on request. Please refer to the specifications on pages 221-223.



DESIGN

Two-part case, range of 3 different versions. Screw pillars in the base part and guide ridges for horizontal and vertical mounting of PCBs. Front panel as accessory. Case parts are assembled by 4 self-tapping screws.

VERSION I

DESK CASE 190

With closed top part. Control area recessed by 1.0 mm.

VERSION II

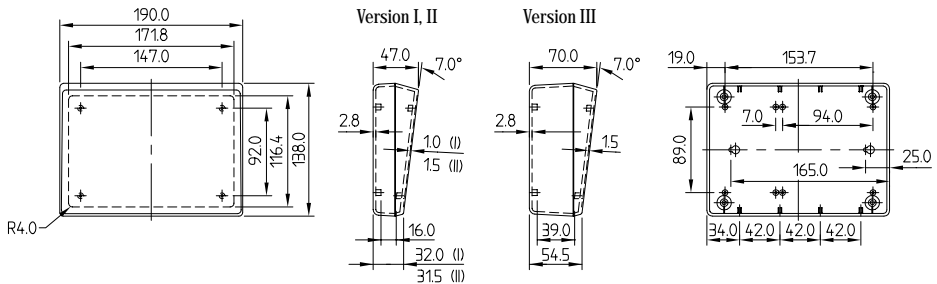
DESK CASE 190 F

Top prepared for front panel mounting. Flat base.

VERSION III

DESK CASE 190 H

Top for front panel mounting. Higher base.



Part No.	CASE			Colour-combination	MODIFICATIONS AS PER CUSTOMER'S REQUIREMENTS
	Desk case	Outside dim. in mm			
		W	D	H	
A 05 19 007	190	190	138	47 / 32	off-white
A 05 19 009	190	190	138	47 / 32	black
A 90 86 265	190 F	190	138	47 / 31.5	off-white / pebble grey
A 90 86 365	190 H	190	138	70 / 54.5	off-white / pebble grey
ACCESSORIES					
	Article	Version (for desk cases 190 F and H only)			
A 91 86 001	Front panel	matt anodized aluminium 161,5 x 106 x 1,5 mm (screws supplied with case)			
					See pages 216-219.

DESK CASE 220

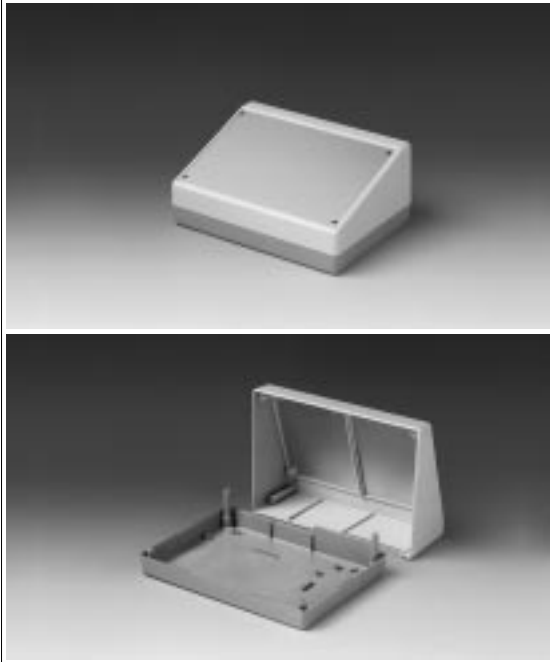


DESIGN

Two-part case. Matt anodized aluminium front panel available as accessory.
Fastening pillars with brass bushes (M3) for mounting PCBs in the base. Raised rear area to accommodate plugs.

ASSEMBLY

Case parts are assembled by 4 threaded screws.



For measuring and control equipment. With space for large assemblies.

STANDARD COLOURS

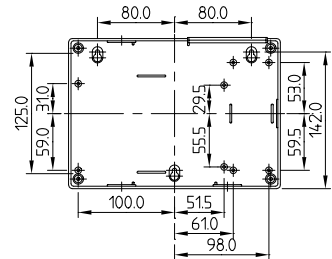
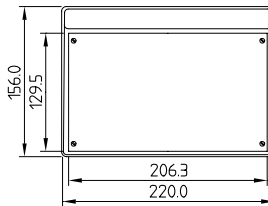
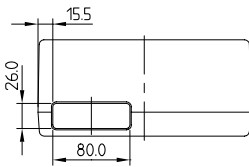
Top part off-white, RAL 9002, base part pebble grey, RAL 7032.
Please refer to colour chart on page 220.

SPECIAL COLOURS

Any desired colour.

MATERIAL

High-impact polystyrene (UL 94 HB). Also available in other materials on request. Please refer to the specifications on pages 221-223.



MODIFICATIONS AS PER CUSTOMER'S REQUIREMENTS

See pages 216-219.

CASE

Outside dim. in mm

W	D	H	Colour-combination
220	156	100 / 52	off-white / pebble grey

ACCESSORIES

Article	Version
Front panel	matt anodized aluminium 205,5 x 129,4 x 1,5 mm (screws supplied with case)

Part No.

A 90 82 065

A 91 80 001

Flat, modern styling.
Versatile in use.

Particularly applicable for control equipment and mounting of keyboards.

Version with attachment for digital readouts, measuring equipment, encoders etc.

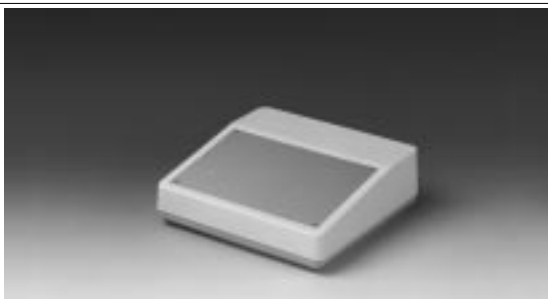
STANDARD COLOURS

Top part off-white, RAL 9002, base part pebble grey, RAL 7032.

Please refer to colour chart on page 220.

MATERIAL

High-impact polystyrene (UL 94 HB). Also available in other materials on request. Please refer to the specifications on pages 221-223.



Version F



DESIGN

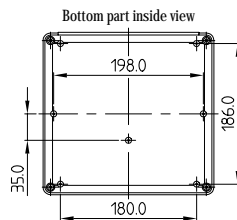
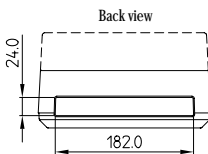
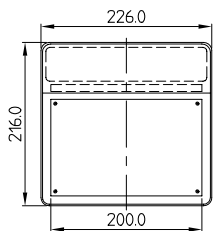
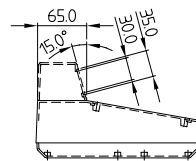
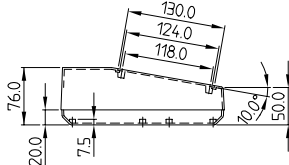
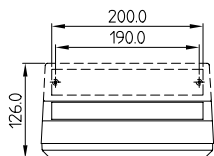
Case with matt anodized aluminium front panel. The base part has fastening pillars with inserts M3 for the mounting of PCBs. Raised panel at the rear for cable grommets and plug mounting.

ASSEMBLY

Case parts are assembled by 4 threaded screws. The attachment will snap into the top of the assembly.



Version H



Part No.	CASE		Outside dim. in mm			Colour-combination	MODIFICATIONS AS PER CUSTOMER'S REQUIREMENTS See pages 216-219.
	Version	W	D	H			
A 90 84 165	F	228	216	76 / 50	off-white / pebble grey		
A 90 85 165	H	228	216	126 / 50	off-white / pebble grey		
ACCESSORIES							
Article	Version						
A 91 84 001	Front panel	matt anodized aluminium 200 x 130 x 1,5 mm (screws supplied with case)					
A 91 85 001	Front panel	matt anodized aluminium 200 x 35 x 1,5 mm (screws supplied with case)					