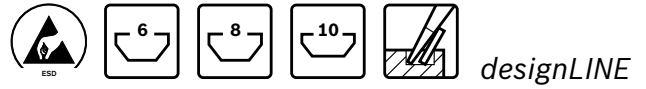


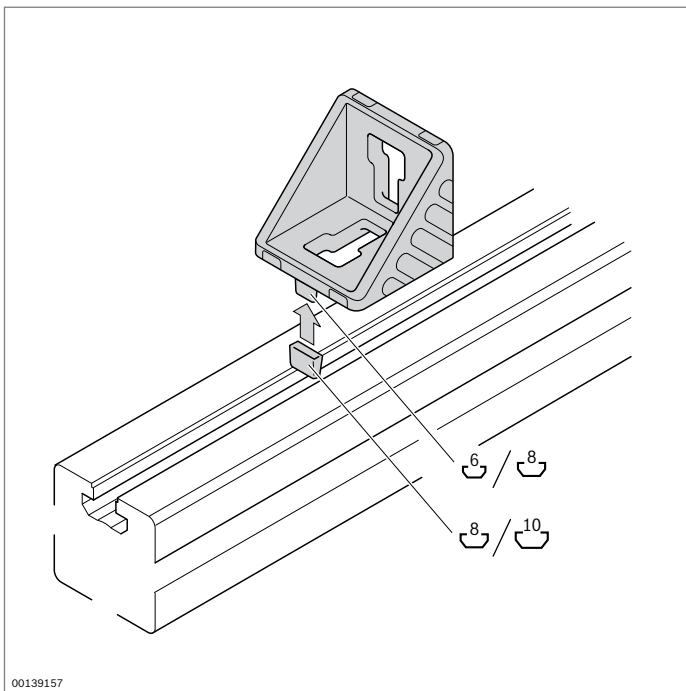
Bracket



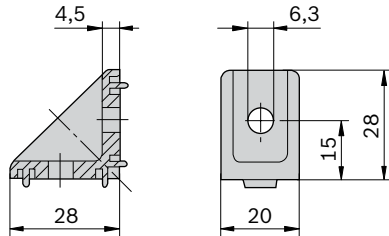
- ▶ Bracket with centering lugs for quick, precise and twist-resistant installation
- ▶ The centering lugs can simply be broken off for assembly on plates or at an angle to the slot
- ▶ *DesignLINE* version with special silver paint (RAL 9006) for an especially high-quality design
- ▶ Adapter for positioning brackets in the next largest slot
- ▶ Sliding block offset for off-center positioning of the 45/45 bracket
- ▶ Cover cap to protect from dirt, available in signal grey (RAL 7004) and black ESD (RAL 9005)
- ▶ Profile machining: not required

Technical data (p. 19-9)

Notice: The collar screws enable the brackets to be assembled really quickly and easily (p. 3-5)



20x28



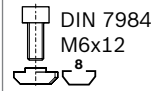
00125983

20x28	Slot	ESD	No.	FS
Set (standard)	8 / 8		1 3 842 502 137	2xFS1
Bracket (standard)	8		100 3 842 501 587	

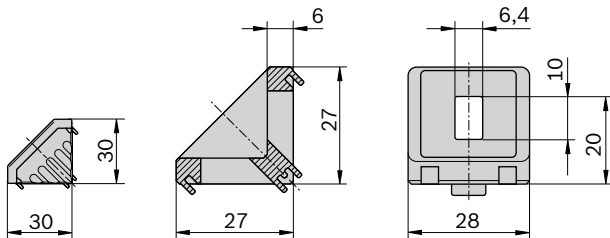
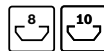
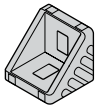
Material: Diecast zinc
Fastening material: Steel, galvanized

Scope of delivery: Set Incl. fastening material (FS)

FS1



30/30



00109415

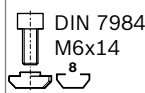
30/30	Slot	ESD	No.	FS
Set (standard)	8 / 8		1 3 842 523 528	2xFS2
	8 / 10		1 3 842 523 530	1xFS2, 2xFS3, 1xFS4
	10 / 10		1 3 842 523 532	4xFS3, 2xFS4
<i>designLINE</i> set	8 / 8		1 3 842 551 598	2xFS2
	8 / 10		1 3 842 551 600	1xFS2, 2xFS3, 1xFS4
	10 / 10		1 3 842 551 599	4xFS3, 2xFS4
Bracket (standard)	8		100 3 842 523 525	
Cover cap, signal grey			100 3 842 548 846	
Cover cap, black			100 3 842 548 847	
Adapter for 10 mm slot	8 / 10		100 3 842 523 537	

Material: Bracket: diecast aluminum, vibratory ground
Bracket *designLINE*: painted (RAL 9006)
Adapter: PA, black
Cover cap: PP

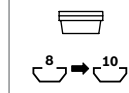
Fastening material: Steel, galvanized
Scope of delivery: Set Incl. fastening material (FS)

Model				
30/30	1250 N	25 Nm	75 Nm	—

FS2



FS3



FS4

