

Rittal – The System.

Faster – better – everywhere.

Mounting plates for KL and KL-HD – KL 1567.700

Date : Feb 16, 2016

ENCLOSURES

POWER DISTRIBUTION

CLIMATE CONTROL

IT INFRASTRUCTURE

SOFTWARE & SERVICES

FRIEDHELM LOH GROUP



Mounting plates for KL and KL-HD – KL 1567.700

created : 16.02.2016 build on www.rittal.com/uk-en



Product description

Description:	For component installation outside of the enclosure. Assembly screws included as accessories with the enclosure.
---------------------	--

Material:	Sheet steel, 2.0 mm
------------------	---------------------

Surface finish:	Zinc-plated
------------------------	-------------

Packs of:	1 pc(s).
------------------	----------

EAN:	4028177010215
-------------	---------------

Customs tariff number:	85389099
-------------------------------	----------

eCl@ss 5.1:	27189231
--------------------	----------

eCl@ss 7.0:	27409216
--------------------	----------

ETIM 6.0:	EC000213
------------------	----------


Product features

To fit:	Enclosure type: KL Width: = 300 mm Height: = 300 mm
----------------	---

Weight/pack:	1.22 kg
---------------------	---------

Downloads

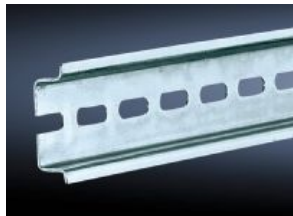
Data sheets:

 [Technical details](#)
EN

CAD drawings:

[Request](#)

Please note that there are the following alternative products:



Support rails TS 35/7.5 to EN 60 715 for KL, KL-HD, AE

Further information on this product

www.rittal.com/uk-en/Support_rails_TS_35/7.5_to_EN_60_715_for_KL,_KL_HD,_AE