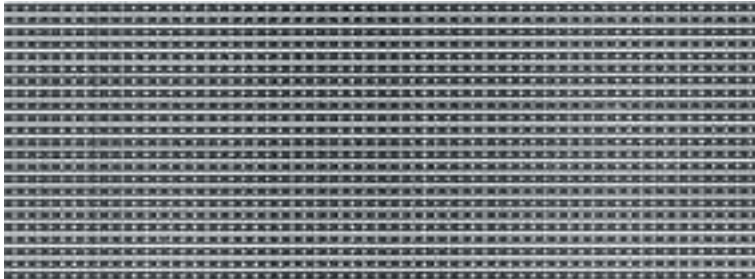


REF. : AJP15

**SINGLE SIDED BAKELITE 35 μ , THICKNESS 15/10TH TINNED COPPER CLAD
PADS, 100 X 150 MM**



Drilled at 2,54 mm pitch.

Ø -> drilling 1 mm.

Gap of 0,54 mm on the whole surface. Width of tracks 2 mm over the whole surface.

Material : bakelite FR2

Exist in size (in mm) :

- . 50 x 100 (ref AJP5)
- . 100 x 100 (ref AJP10)
- . 100 x 150 (ref AJP15)
- . 100 x 160 (ref AJP16)
- . 100 x 200 (ref AJP20)
- . 100 x 220 (ref AJP22)
- . 100 x 580 (ref AJP58)