

# VarioFlow Lateral Guide Generation 2



Customer Presentation

### Your requirements:

- A compact, clearly designed lateral guide system for numerous standard applications and customized solutions
- Optimum adjustment to the transported goods
- Minimal planning and assembly effort
- Universal use in the aluminum and stainless steel systems
- Stable
- Easy to clean
- Excellent cost/benefit ratio

### Our solution:

## VarioFlow lateral guide generation 2

# VarioFlow Lateral Guide Generation 2 Strengths at a Glance

- Minimal planning effort thanks to clear modular system

- Easy to clean
- Largely resistant to chemicals in low concentration

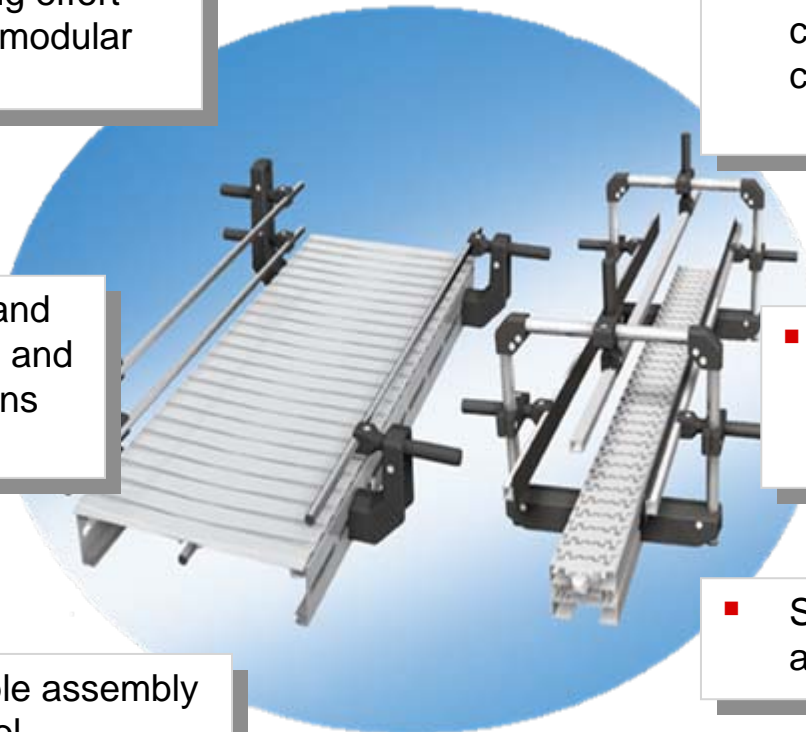
- Universal use in VF and VFS in the aluminum and stainless steel versions

- Minimal accumulation of dirt due to draining surfaces

- Quick and simple assembly with a single tool

- Suitable for ESD applications

- Stable



# VarioFlow Lateral Guide Generation 2

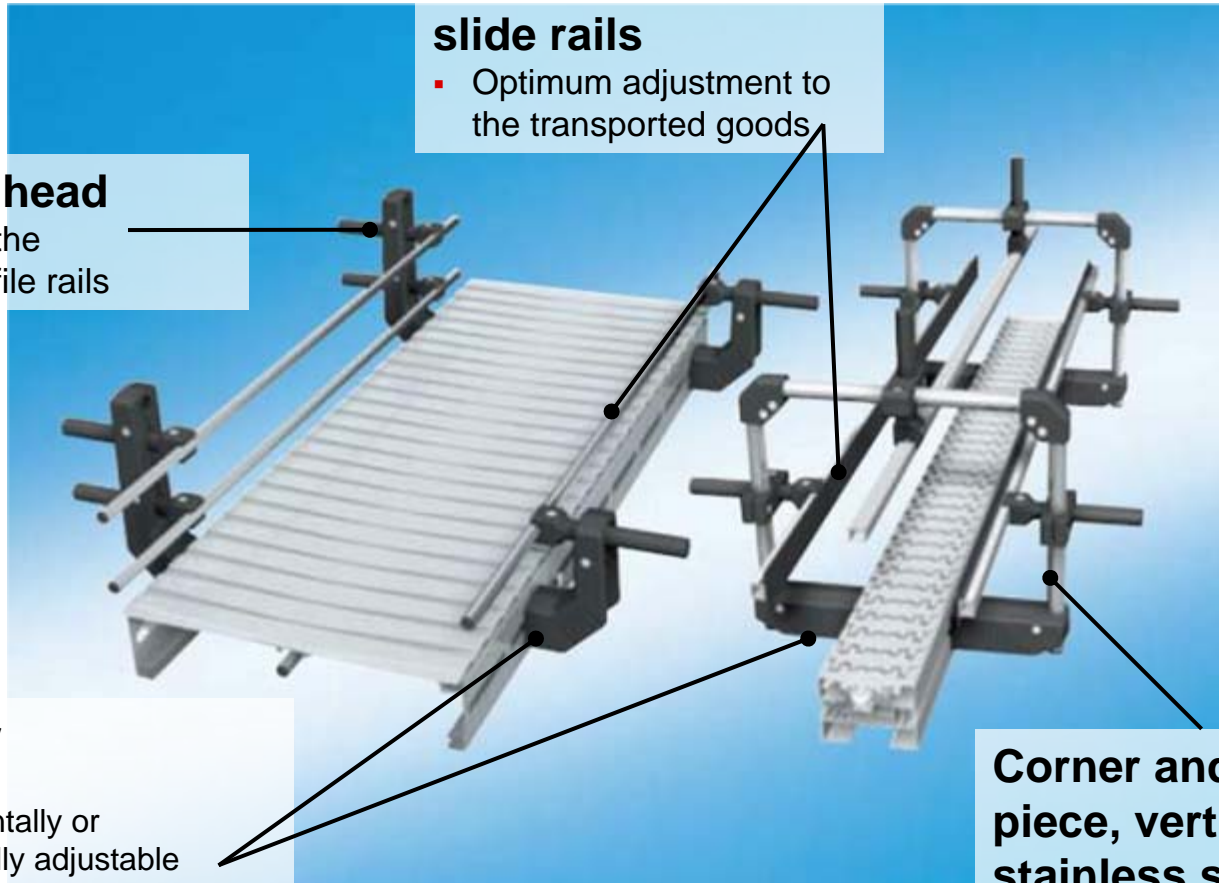
## Key Technical Data

### Profile rails and slide rails

- Optimum adjustment to the transported goods

### Clamping head

- for holding the various profile rails



### Holder

- Fixed,
- Horizontally or
- Vertically adjustable

### Spacer

- For increasing system width

### Corner and cross piece, vertical holder, stainless steel tube

- For constructing complex lateral and upper guides

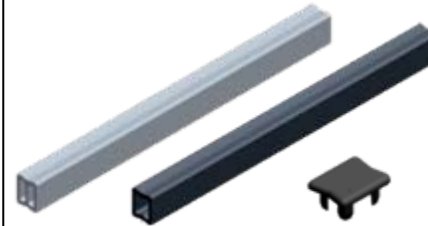
# VarioFlow Lateral Guide Generation 2 Models/Product Types (Product Range Overview)



- Horizontal and vertical holders
- Spacer



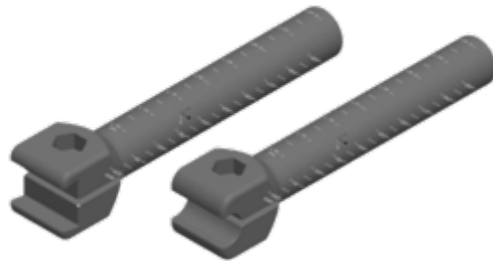
- Cross piece
- Corner piece



- Aluminum and HDPE profile rails
- Cap



- Internal connector
- External connector



- Clamping head 2C
- Clamping head Ø12



- Vertical clamping head
- Stainless steel tube



- Plug
- Reducing piece



- Wide slide rail
- Narrow slide rail/ESD

# VarioFlow Lateral Guide Generation 2 Models/Product Types



- Horizontally adjustable
  - 2-hole and
  - 4-hole holdersfor installation on the aluminum or stainless steel system
- Draining surfaces



# VarioFlow Lateral Guide Generation 2 Models/Product Types



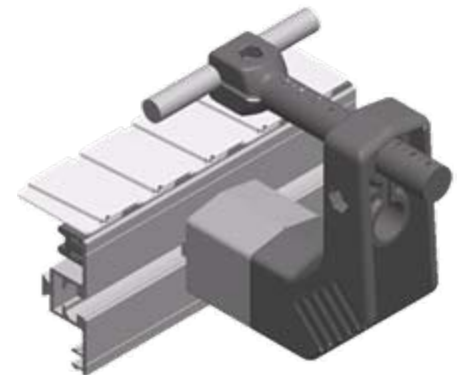
- Vertically adjustable holder for installation on the aluminum or stainless steel system
- For constructing complex customized guides
- Draining surfaces



# VarioFlow Lateral Guide Generation 2 Models/Product Types



- Spacer L = 40 mm with integrated stainless steel core for stable extension of the conveyor width
- Draining surfaces





# VarioFlow Lateral Guide Generation 2 Models/Product Types



- Clamping head for constructing height-adjustable guides
- Double-sided scaling in mm and inches



# VarioFlow Lateral Guide Generation 2 Models/Product Types



- Clamping head for clamping guide profiles in the variants:
  - Guide profile 2C
  - Stainless steel profile  
Ø 12 mm
- Double-sided scaling in mm and inches



# VarioFlow Lateral Guide Generation 2 Models/Product Types



- Stainless steel round tube  $\varnothing$  18 mm  
L = 3000 mm for mounting:
  - height-adjustable vertical holdersas well as
  - transverse supports for upper guides



# VarioFlow Lateral Guide Generation 2 Models/Product Types



- Cross piece for the adjustable horizontal/vertical connection
  - of the tubes
  - and/or
  - clamping heads



# VarioFlow Lateral Guide Generation 2 Models/Product Types



- Corner piece for end-to-end connection of stainless steel tubes



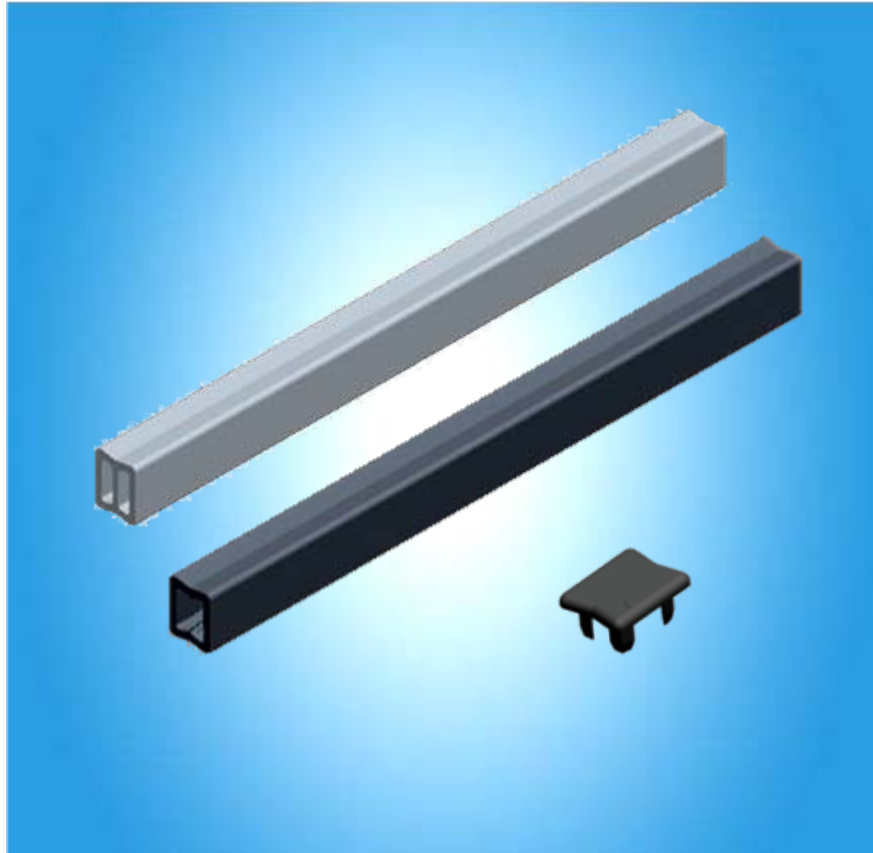
# VarioFlow Lateral Guide Generation 2 Models/Product Types



- Plug Ø 18 mm to prevent dirt from entering the open ends
  - of the clamping heads
  - of the stainless steel tubes

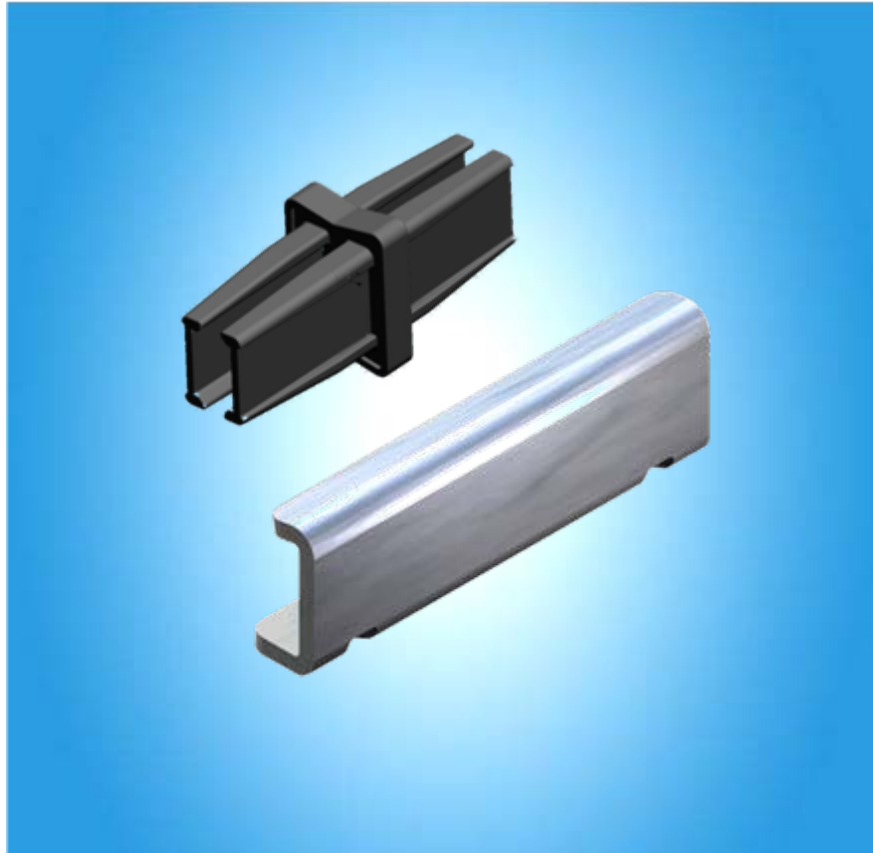


# VarioFlow Lateral Guide Generation 2 Models/Product Types

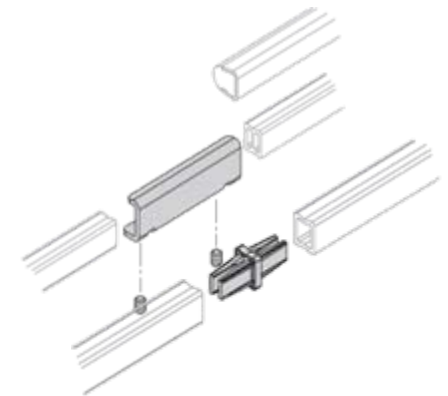


- Symmetrical profile rails made of:
  - aluminum
  - HDPE
- The HDPE profile rail is especially suited for guiding lightweight products in curve areas and can be bent without the use of a bending tool
- Cap for covering the open ends

# VarioFlow Lateral Guide Generation 2 Models/Product Types

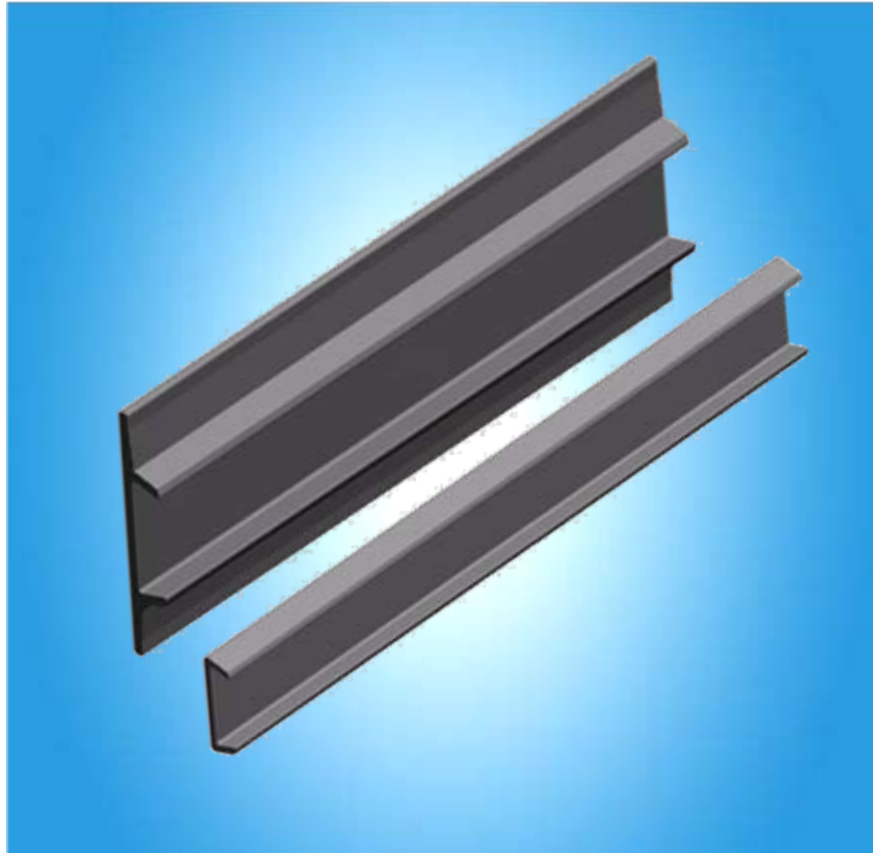


- Profile connector for connecting the C profile rails in the variants:
  - Internal connector made of polymer
  - External connector made of stainless steel

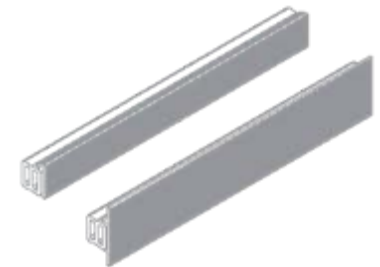




# VarioFlow Lateral Guide Generation 2 Models/Product Types



- Clip-on slide rails for minimizing frictional resistance to the product in the variants:
  - HDPE  $h = 38$  mm
  - HDPE  $h = 21$  mm
  - PE-UHMW ESD  $h = 21$  mm
- The low-wear PE-UHMW ESD slide rail is recommended for use in horizontal curves and accumulation areas



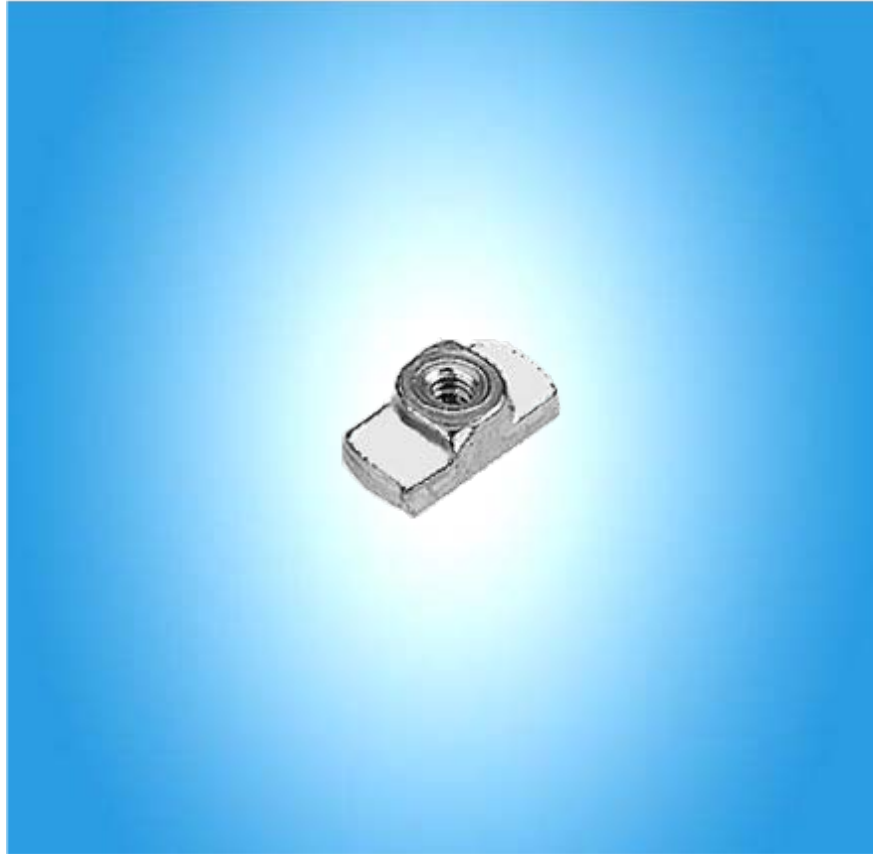
# VarioFlow Lateral Guide Generation 2 Models/Product Types



- Reducing piece  
from  $\varnothing$  18 mm to  $\varnothing$  12 mm
- To hold industry and customer-specific components, e.g. proximity switches

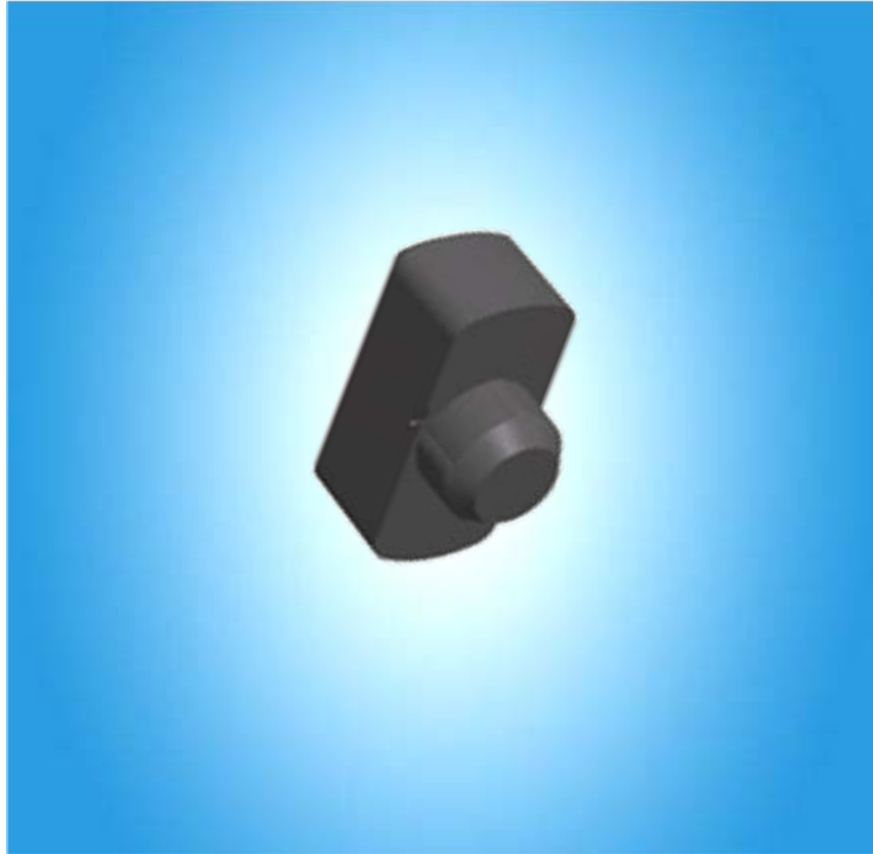


# VarioFlow Lateral Guide Generation 2 Models/Product Types



- Stainless steel T-nut M6
- For fastening the holders or other components to the VFS stainless steel system

# VarioFlow Lateral Guide Generation 2 Models/Product Types



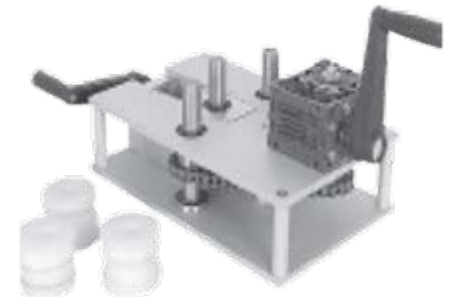
- Centering bolt
- For fixing the holders in the oblong hole of the VFS stainless steel system



# VarioFlow Lateral Guide Generation 2 Models/Product Types



- Roller set
- For bending the aluminum profile rails in horizontal and vertical directions



# VarioFlow Lateral Guide Generation 2 Applications/Target Industries

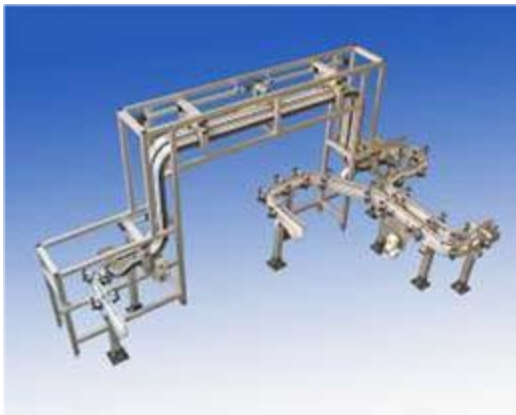
- Food industry



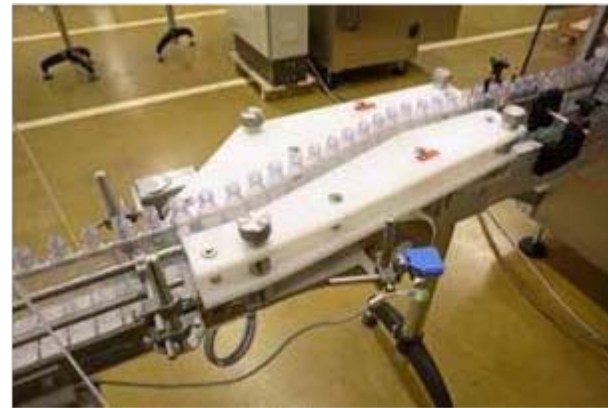
- Packaging industry



- Packaging industry



- Pharmaceutical industry



# Easily planned and easily assembled...



...with the  
**VarioFlow lateral guide generation 2**