

Rittal – The System.

Faster – better – everywhere.

▶ TS punched section with mounting flange, 17 x 73 mm – TS 8612.140

Date : Nov 15, 2016

ENCLOSURES

POWER DISTRIBUTION

CLIMATE CONTROL

IT INFRASTRUCTURE

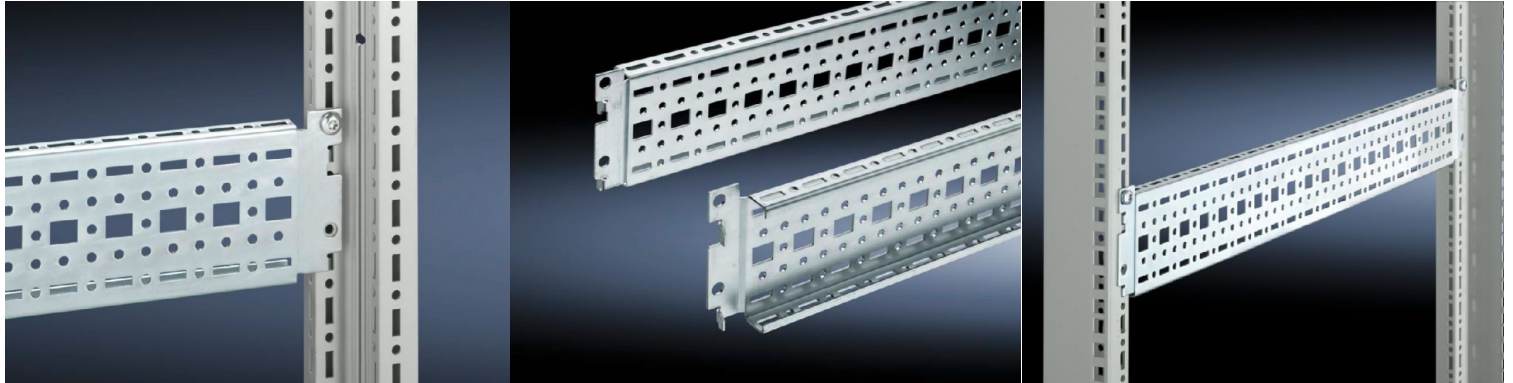
SOFTWARE & SERVICES

FRIEDHELM LOH GROUP



TS punched section with mounting flange, 17 x 73 mm – TS 8612.140

created: 15.11.2016 build on www.rittal.com/th-en



Product description

Description: Variable, with 5 rows of holes for universal skeleton structures or partial assembly. Simply locate onto the TS punchings and secure.

Material: Sheet steel

Surface finish: Zinc-plated

Assembly instruction: The rail for internal mounting is required when installing in CM, TP

Supply includes: Assembly screws

Product features

Design: For the outer mounting level

To fit: Width/depth: 400 mm

Dimensions: Length: 340 mm

Installation options: On the vertical TS enclosure section: On the outer mounting level, all-round, at the same height
For SE, may additionally be mounted on the top horizontal section in the depth
In CM and TP via rail for interior installation: In the depth, for outer mounting level

Packs of: 4 pc(s).

Weight/pack: 1.59 kg

EAN:	4028177212138
Customs tariff number:	73269098
ETIM 6.0:	EC002625
ETIM 5.0:	EC002625
eCl@ss 8.0/8.1:	27189234
eCl@ss 7.0/7.1:	23159101
eCl@ss 6.0/6.1:	23159101
eCl@ss 5.1/5.1.4:	27189250