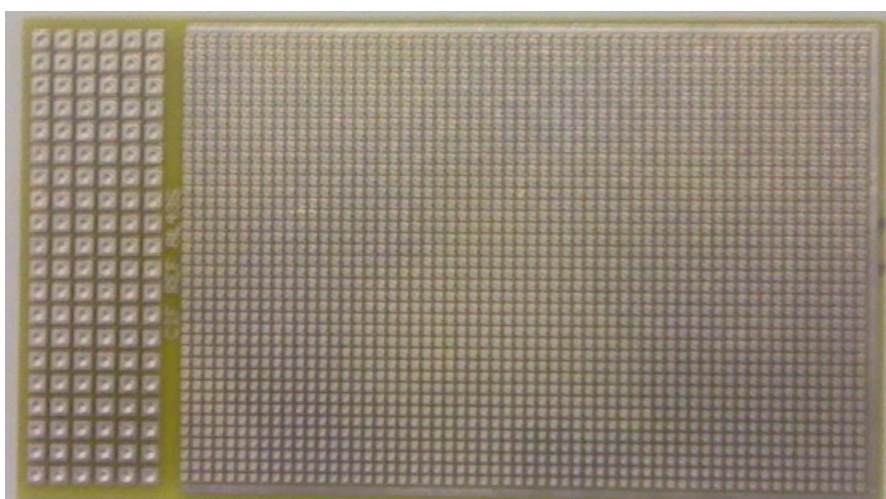




[www.cif.fr](http://www.cif.fr)

## Test boards for SMD components 2 face FR4 0.70µm

AL435



---

This document contains manufacturer's information, protected through copyright. All rights reserved. This document can not be copied, reproduced or translated without written agreement from **C.I.F**

Information contained in this document can be modified without any prior notice

### Characteristics

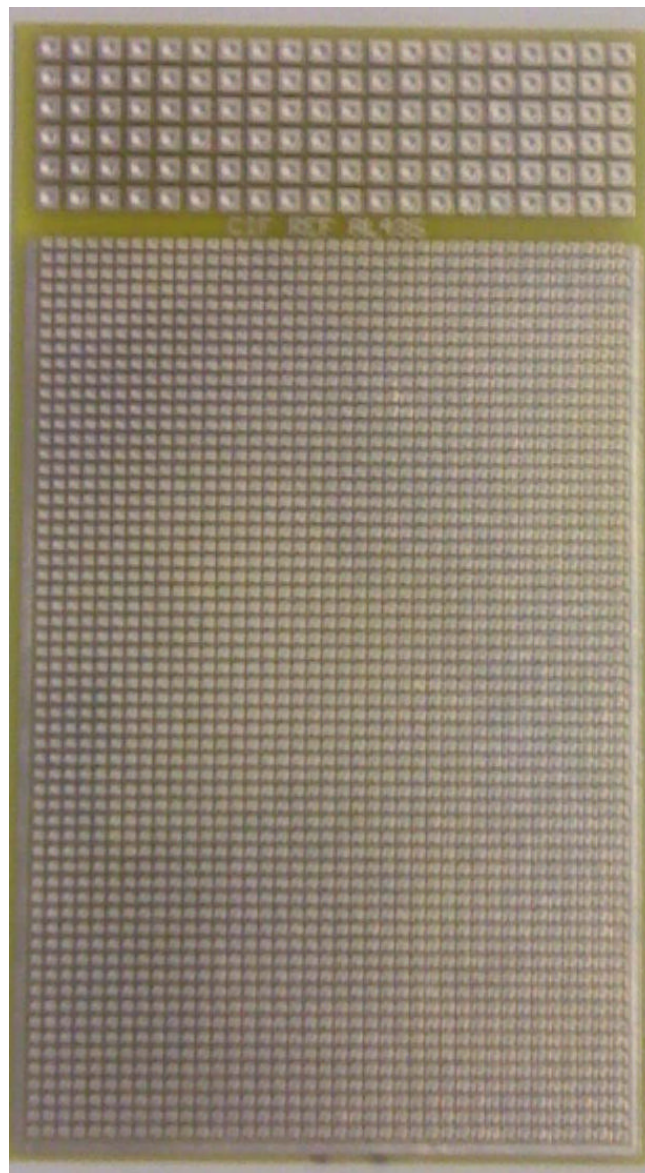
**AL 435 - Epoxy thickness: 0,70 mm.**

39 x 59 SMD pads 1 mm<sup>2</sup> drilled at 0,35 mm.

1,27 mm pitch.

6 rows at 2,54 mm pitch at the edge.

Holes fully plated



[cif@cif.fr](mailto:cif@cif.fr)