

## Contact insert - VS-PSC 1,5/5-M PE - 1689323

Please be informed that the data shown in this PDF Document is generated from our Online Catalog. Please find the complete data in the user's documentation. Our General Terms of Use for Downloads are valid (<http://phoenixcontact.com/download>)



POWER-SUBCON header, for mounting side, 5-pos., with capacitive ground connection, shielded, color: green



### Key Commercial Data

Packing unit	10 pc
Minimum order quantity	10 pc
GTIN	 4 017918 893170
Weight per Piece (excluding packing)	8.15 g
Custom tariff number	85366990
Country of origin	Poland
Note	Made to Order (non-returnable)

### Technical data

#### General data

Note	Only actuate MINI COMBICON connectors when under no load condition. If for operating reasons small loads must be switched, experimental values are available upon request.
Number of positions	5
Overvoltage category	III
Pollution degree	3

### Classifications

#### eCl@ss

eCl@ss 4.0	27140816
eCl@ss 4.1	27260701
eCl@ss 5.0	27260701
eCl@ss 5.1	27260701
eCl@ss 6.0	27260705

# Contact insert - VS-PSC 1,5/5-M PE - 1689323

## Classifications

### eCl@ss

eCl@ss 7.0	27440309
eCl@ss 8.0	27440205

### ETIM

ETIM 2.0	EC000438
ETIM 3.0	EC000438
ETIM 4.0	EC000438
ETIM 5.0	EC000438

### UNSPSC

UNSPSC 6.01	30211923
UNSPSC 7.0901	39121522
UNSPSC 11	39121522
UNSPSC 12.01	39121522
UNSPSC 13.2	39121522

## Approvals

### Approvals

---

Approvals

EAC / EAC

---

Ex Approvals

---

Approvals submitted

---

### Approval details

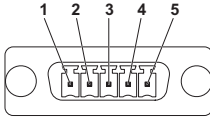
EAC
-----

EAC
-----

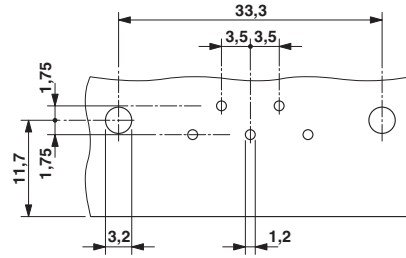
## Drawings

# Contact insert - VS-PSC 1,5/5-M PE - 1689323

Schematic diagram

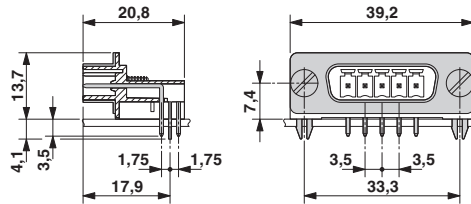


Drilling diagram



Drilling diagram

Dimensional drawing



POWER SUBCON contact insert