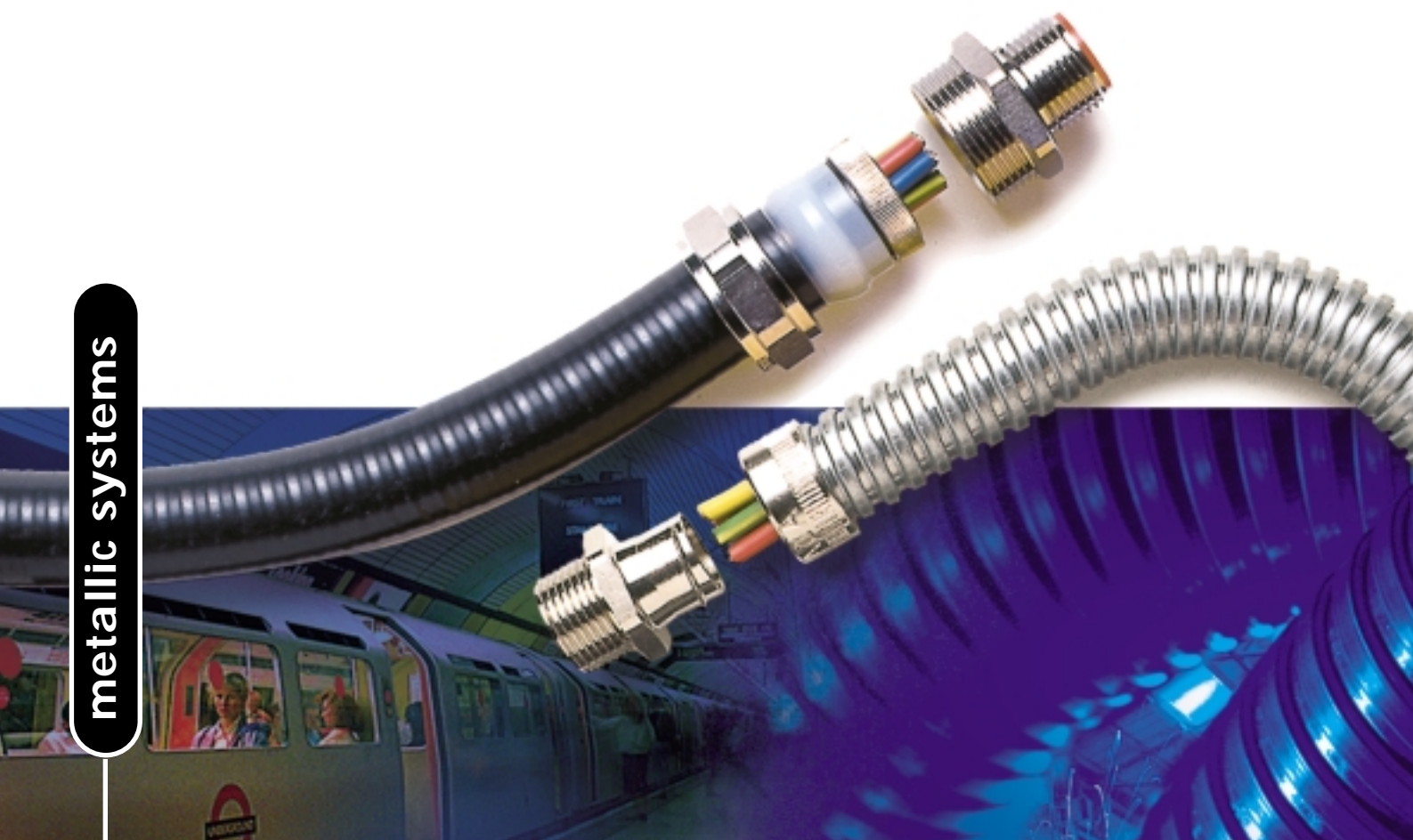




non-metallic systems

Adaptaflex[®]

Flexible Conduit Systems



metallic systems



Flexible Conduit Systems

Customer confidence

For over 25 years, Adaptaflex has built an enviable reputation for providing reliable, safe and cost effective flexible and pliable conduit systems that our customers specify and install time and again, with complete confidence.

Customer choice

At our development, manufacturing and commercial centre in Coleshill, near Birmingham in the UK, continuous investment in people and technology, gives Adaptaflex the edge to innovate, design and produce the market leading products which enable our customers to choose exactly the right system for the job in hand. The extent of this choice is illustrated by the typically diverse and demanding applications shown alongside each of the Adaptaflex systems featured in this catalogue.

For advice on matching the right Adaptaflex system to your application, call the Adaptaflex Infoline, we'll be pleased to help, or see our new website on www.adaptaflex.com.



Infoline: 01675 468202



www.adaptaflex.com

CONTENTS QUICK SELECTOR 1

ADAPTALEX IN ACTION 2

NON-METALLIC SYSTEMS

NON-METALLIC FLEXIBLE SYSTEMS 4
 COMPATIBLE WITH:
 ADAPTALOK IP66 SYSTEM 6
 ADAPTASEAL IP67 SYSTEM 12
 ADAPTARING IP40 SYSTEM 14
 LARGE DIAMETER IP40/65 SYSTEM 16
 T & Y PIECES IP40 SYSTEM 17

HI-SPEC FLEXIBLE SYSTEMS 18

KORIFIT NON-METALLIC PLIABLE SYSTEMS 20
 XTRAFLEX NON-METALLIC FLEXIBLE SYSTEM 22
 NON-METALLIC ACCESSORIES 23

METALLIC SYSTEMS

ADAPTASTEEL STEEL FLEXIBLE SYSTEMS 24

ADAPTASTEEL COVERED STEEL FLEXIBLE SYSTEMS 26

ADAPTASTEEL LIQUID TIGHT COVERED STEEL FLEXIBLE SYSTEMS 28

ADAPTASTEEL OVERBRAIDED STEEL FLEXIBLE SYSTEMS 30
 LIQUID TIGHT HIGH STRENGTH OVERBRAIDED STEEL SYSTEM 32

STAYFLEX PLIABLE SYSTEM 33

CUTTING TOOLS 34
 CUTTING INSTRUCTIONS 35
 METALLIC ACCESSORIES 36

PERFORMANCE CHARACTERISTICS 38
 CONDUIT & FITTING MATERIALS 40
 CHEMICAL RESISTANCE 41
 EN50086 CLASSIFICATIONS 42
 THREAD DATA, IP RATINGS & CABLE CARRYING CAPACITY 43
 INTERNATIONAL APPROVALS 44
 EMI SCREEN SYSTEMS & GLOSSARY 45

FLEXIBLE	PLIABLE	HIGH MECHANICAL STRENGTH	EMI SCREEN	LOW FIRE HAZARD	HALOGEN FREE	HIGH FATIGUE LIFE	HIGH ABRASION RESISTANCE	HIGH UV RESISTANCE	TEMPERATURE RANGE (°C)		AVAILABLE IP PROTECTION with appropriate fitting					CONDUIT TYPE	
									MIN	MAX	IP40	IP54	IP65	IP66	IP67		IP68
✓	-	-	-	-	✓	-	-	-	-40	120	✓	-	-	✓	✓	-	PA LIGHT
✓	-	-	-	✓	✓	-	✓	✓	-40	120	✓	-	-	✓	✓	✓	PA STANDARD
✓	-	-	-	✓	✓	-	✓	✓	-40	120	✓	-	-	✓	✓	✓	PA HEAVY
✓	-	-	-	✓	✓	-	✓	✓	-40	120	✓	-	-	✓	✓	✓	PR
✓	-	-	-	-	✓	✓	-	✓	-50	110	✓	-	-	✓	✓	✓	PI STANDARD
✓	-	-	-	-	✓	✓	-	✓	-50	110	✓	-	-	✓	✓	✓	PI HEAVY
✓	-	-	-	-	✓	-	-	✓	-20	90	✓	-	-	✓	✓	-	PP
✓	-	-	-	✓	✓	-	✓	✓	-40	120	✓	-	✓	-	-	-	PA Large Diameter
✓	-	-	-	-	✓	✓	-	✓	-50	85	✓	-	✓	-	-	-	PI Large Diameter
✓	-	-	-	✓	✓	-	-	✓	-60	260	-	-	-	-	✓	-	PK
✓	-	✓	✓	✓	✓	-	✓	✓	-60	260	-	-	-	-	✓	-	PKTC
✓	-	✓	✓	✓	✓	-	✓	✓	-60	260	-	-	-	-	✓	-	PKSS
✓	-	✓	✓	✓	✓	-	✓	✓	-40	120	-	-	-	-	✓	-	PRTC
✓	-	✓	✓	✓	✓	-	✓	✓	-40	120	-	-	-	-	✓	-	PRSS
-	✓	-	-	-	-	-	-	✓	-5	60	✓	-	✓	-	-	-	KFL
-	✓	-	-	-	-	-	-	✓	-5	60	✓	-	✓	-	-	-	KFS
-	✓	-	-	-	-	-	-	✓	-5	60	✓	-	✓	-	-	-	KFM
✓	-	-	-	-	-	-	-	✓	-5	60	-	-	✓	-	-	-	XF
✓	-	✓	-	✓	✓	✓	-	✓	-50	300	✓	-	-	-	-	-	S
✓	-	✓	-	✓	✓	✓	✓	✓	-50	350	✓	-	-	-	-	-	SS
✓	-	✓	-	-	-	-	-	✓	-15	70	-	✓	✓	-	-	-	SP
✓	-	✓	-	-	✓	-	✓	✓	-40	120	-	✓	✓	-	-	-	SN
✓	-	✓	-	✓	✓	-	-	✓	-25	90	-	✓	✓	-	-	-	LFH-SP
✓	-	✓	-	-	-	-	-	✓	-20	105	-	-	-	✓	✓	✓	SPL
✓	-	✓	-	-	✓	✓	-	✓	-65	135	-	-	-	✓	✓	✓	SPLHC
✓	-	✓	-	-	-	-	-	✓	-15	75	-	-	-	✓	✓	-	SPUL
✓	-	✓	✓	✓	✓	✓	✓	✓	-50	300	✓	-	-	-	-	-	SB
✓	-	✓	✓	✓	✓	✓	✓	✓	-50	300	✓	-	-	-	-	-	STC
✓	-	✓	✓	-	-	-	✓	✓	-15	70	-	✓	-	-	-	-	SPB
✓	-	✓	✓	-	-	-	✓	✓	-15	70	-	✓	-	-	-	-	SPTC
✓	-	✓	✓	-	✓	✓	✓	✓	-65	135	-	-	-	✓	✓	✓	SPLHCB
-	✓	-	-	-	-	-	-	✓	-15	70	-	-	-	-	✓	-	LSP

A look at what's new from the leading company in flexible and pliable conduit systems...

Our continued policy of new product development in line with worldwide market requirements, has resulted in the updating of our product catalogue.

The global market for flexible conduit systems continues to move towards non-metallic systems, and this is reflected in the many new products in this publication. However, the more traditional metallic conduit systems continue to be very important for Adaptaflex, with new developments being introduced to widen the application of these systems.

Market Changes

Recently, the most significant changes in our market have been the introduction of new International standards, namely, the European Standard EN50086 (soon to become IEC61386) which specifies performances for conduit systems for electrical installations, the EC directives for electromagnetic compatibility (EMC) and construction products (CPD).

Since Adaptaflex has representatives involved in writing these new standards, you can be assured that the products you are buying represent the very latest in design philosophies.

For example, our recently introduced new range of Hi-Spec products for specialised applications, where fire and toxic fume risks are of particular concern, or where electromagnetic interference (EMI) screening of conduit is required. To help recognise these special properties, we have introduced a set of symbols which allow you, at a glance, to see the varying degrees of performance.



Adaptalok Range

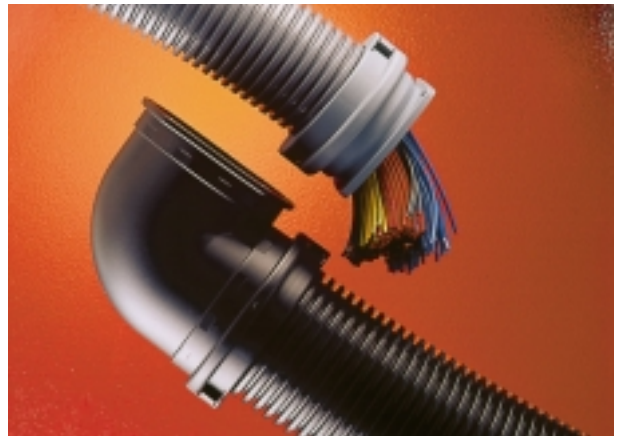
Adaptalok, the non-metallic conduit system with 'push-on' fittings is now recognised as being the lowest installed cost system, due to how quickly it can be assembled. The one piece fittings include straights, curved 90°, 45°, as well as a unique range of swivel brass threaded fittings which offer increased strength of threads.

Curved Elbows

Adaptaflex has introduced a complete range of curved 90° elbows to suit Adaptaflex's non-metallic flexible conduit systems including Adaptalok, Adaptaseal, Adaptaring, Korifit and Xtraflex. The new curved elbow allows the cable to be drawn through more easily due to its gentle curve.

Extended Non-metallic Range

Another recent introduction to the Adaptaflex range is the 80mm and 106mm large diameter conduit system. The large diameter allows an increased number of cables to be carried through a single conduit. The system comes complete with a range of fittings, comprising straight flanges, 90° flanges and a unique elbow coupler.

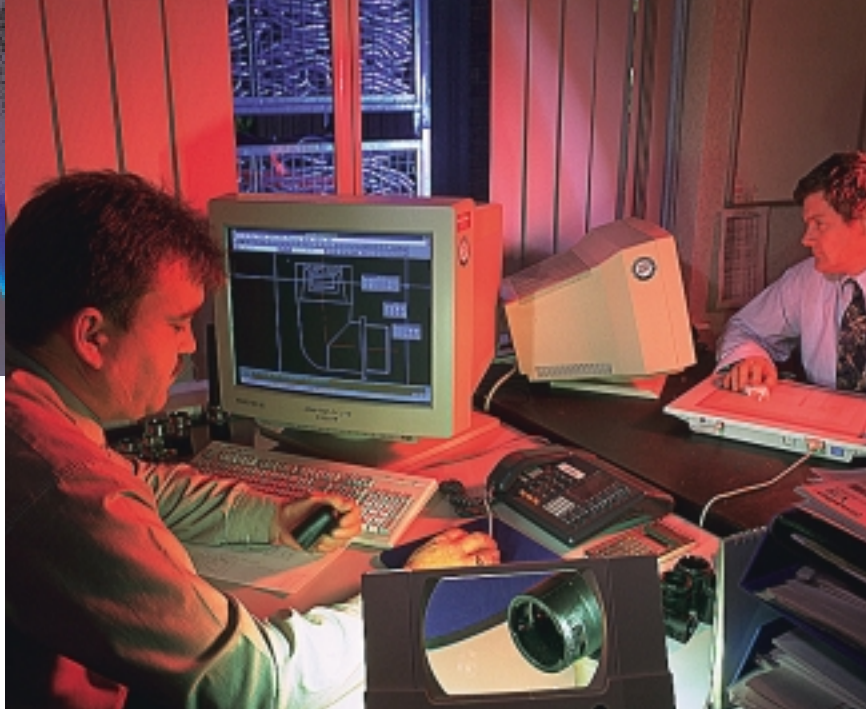
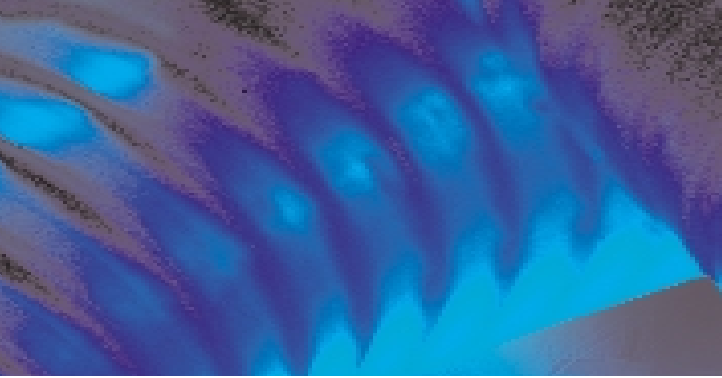


CD Rom and Website

Adaptaflex has recently launched its unique CD-Rom multimedia product guide and information centre, containing essential product, technical and application data for wholesalers, specifiers and electrical contractors.

The recently launched website www.adaptaflex.com contains general product information, as well as keeping you up to date with new products and services. In addition, DXF product drawings files can now be downloaded direct into AutoCad drawing systems, making specification of Adaptaflex products even easier.





Technical Support

To assist specifiers, we now provide more comprehensive technical support details, located at the back of the catalogue. Of course you could also phone our inside sales support team, who are trained to help you apply our products correctly.



Customer Special Orders

Customers sometimes prefer to order pre-assembled conduit systems, when a number of assemblies to the same specification are required, or when the integrity and performance of more specialised systems must be assured.

Our optional in-house assembly service gives Adaptaflex Customers the freedom to have more specialised products designed, or customised to individual specifications.



Available near you

Adaptaflex is as close as your local Electrical stockist, since over 5000 of them, in more than 40 countries, supply Adaptaflex products to installers, machine constructors and panel builders alike.

Adaptaflex subsidiaries in Australia and Germany and the USA, as well as our international network of agents, demonstrate our commitment to expansion in support of existing and potential Adaptaflex Customers, wherever they may be.

Working Together

Our Customers are always welcome to draw on the Adaptaflex expertise in all aspects of design, manufacture, and application of flexible and pliable conduit systems. Our sales team, fully supported by in-house marketing, technical, material and project specialists, await your call to the Adaptaflex Infoline on +44 (0)1675 468202.

Always remember
who's got
the widest range...

Adaptaflex[®]
Flexible Conduit Systems



www.adaptaflex.com

non-metallic flexible systems

- TYPE PA** – LOW FIRE HAZARD, POLYAMIDE (NYLON) 6
- TYPE PR** – ENHANCED LOW FIRE HAZARD, MODIFIED POLYAMIDE (NYLON) 6
- TYPE PI** – HIGH FLEXIBILITY, MODIFIED POLYAMIDE 11
- TYPE PP** – ACID RESISTANT, POLYPROPYLENE

Conduit

TYPE PA
LIGHT WEIGHT
Black (BL) and Grey (GR).

TYPE PA
STANDARD WEIGHT
Black (BL) and Grey (GR).



TYPE PA
HEAVY WEIGHT
Black (BL) and Grey (GR).



TYPE PR
STANDARD WEIGHT
Black (BL) and Grey (GR).



NOMINAL CONDUIT SIZE	OUTSIDE DIAMETER mm	PITCH	PART NUMBER	INSIDE DIAMETER mm	MINIMUM BEND RADIUS mm	REEL LENGTH m	PART NUMBER	INSIDE DIAMETER mm	MINIMUM BEND RADIUS mm	REEL LENGTH m (Black)	REEL LENGTH m (Grey)	PART NUMBER	INSIDE DIAMETER mm	MINIMUM BEND RADIUS mm	REEL LENGTH m	PART NUMBER	INSIDE DIAMETER mm	MINIMUM BEND RADIUS mm	REEL LENGTH m	
10	10.0	FINE	-	-	-	-	PAFS10	6.5	15	50	50	-	-	-	-	-	-	-	-	-
13	13.0	FINE	PAFL13	10.0	25	50	PAFS13	9.6	25	50	50	PAFH13	9.0	35	50	PRFS13	9.4	25	50	
16	15.8	FINE	PAFL16	11.9	35	50	PAFS16	11.8	35	25 & 50	50	PAFH16	11.3	45	50	PRFS16	11.7	35	50	
17	17.8	COARSE	-	-	-	-	PACS17	13.5	35	50	50	PACH17	13.4	45	50	-	-	-	-	
18	18.5	FINE	PAFL18	14.0	40	50	PAFS18	14.2	40	50	50	-	-	-	-	-	-	-		
20	20.0	COARSE	-	-	-	50	PACS20	14.3	40	50	50	-	-	-	-	-	-	-		
21	21.2	FINE	PAFL21	16.8	45	50	PAFS21	16.5	45	25 & 50	50	-	-	-	-	PRFS21	16.6	45	50	
21	21.2	COARSE	-	-	-	-	-	-	-	-	-	PACH21	14.5	60	50	PRCS21	14.7	45	50	
22	21.8	COARSE	-	-	-	-	PACS22	16.6	45	50	50	PACH22	16.5	60	50	-	-	-	-	
25	25.0	COARSE	-	-	-	-	PACS25	19.9	50	25 & 50	50	-	-	-	-	-	-	-		
28	28.5	FINE	-	-	-	-	PAFS28	22.6	50	25 & 50	50	-	-	-	-	-	-	-		
28	28.5	COARSE	PAFL28	22.2	50	50	PACS28	21.7	50	25 & 50	50	PACH28	21.3	70	50	PRCS28	21.7	50	50	
34	34.5	FINE	-	-	-	-	PAFS34	28.8	60	25 & 50	50	-	-	-	-	-	-	-		
34	34.5	COARSE	PAFL34	27.9	60	50	PACS34	27.7	60	25 & 50	50	PACH34	26.8	75	50	PRCS34	27.7	60	50	
42	42.5	COARSE	PAFL42	35.2	65	25	PACS42	35.2	65	10 & 25	25	PACH42	34.6	90	25	PRCS42	35.1	65	25	
54	54.5	COARSE	PAFL54	46.9	75	25	PACS54	46.5	75	10 & 25	25	PACH54	46.0	95	25	PRCS54	46.6	75	25	

To order complete Part No, add colour and reel length - e.g. PAFS21/BL/50M

For large diameters, refer to page 16.

Compatible with

ADAPTALOK
SYSTEM

ADAPTASEAL
SYSTEM

ADAPTARING
SYSTEM

FROM ADAPTFLEX

Type PA conduits offer a range of pitches and weights enabling users to strike the correct balance of mechanical strength and flexibility to suit most applications.

In addition, the flame retardant, low smoke density and toxicity properties of Halogen-free, low fire hazard (LFH) Type PA conduit complement the fire performance cable increasingly being specified where public safety or the integrity of electronic equipment are of concern.

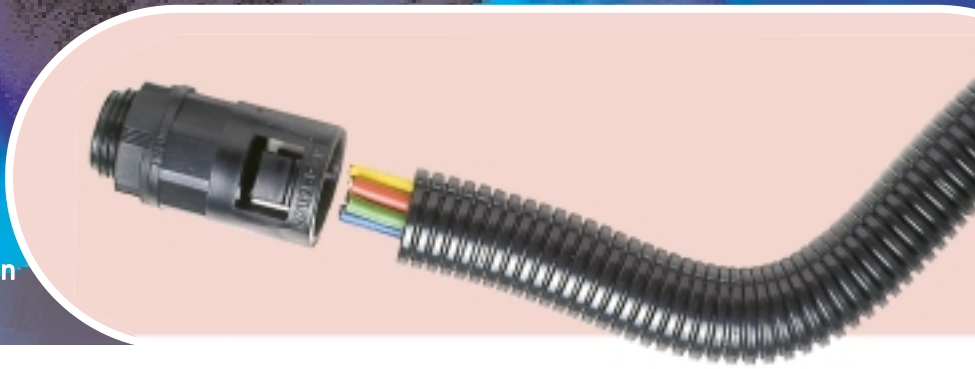
More stringent fire performance approvals, i.e. for railway rolling stock or underground areas are met by enhanced low fire hazard (ELFH) Type PR conduit.

Robotic, rapid or continuous motion applications demanding high fatigue life and extra flexibility are covered by Type PI conduit, which is also used in low temperature environments.

Type PP conduit combined with Adaptalok Type PPA fittings provides an acid resistant flexible system.



NF
NORME FRANÇAISE



Approvals may be limited to certain products, see approvals on page 44.

TYPE PI
STANDARD WEIGHT
Black (BL) and Grey (GR).

TYPE PI ^{NEW}
HEAVY WEIGHT
Black only.

TYPE PP
MEDIUM WEIGHT
Black only.



NOMINAL CONDUIT SIZE	OUTSIDE DIAMETER mm	PITCH	PART NUMBER	INSIDE DIAMETER mm	MINIMUM BEND RADIUS mm	REEL LENGTH m	PART NUMBER	INSIDE DIAMETER mm	MINIMUM BEND RADIUS mm	REEL LENGTH m	PART NUMBER	INSIDE DIAMETER mm	MINIMUM BEND RADIUS mm	REEL LENGTH m
10	10.0	FINE	PIFS10	6.2	15	50	-	-	-	-	-	-	-	-
13	13.0	FINE	PIFS13	9.9	25	50	PIFH13	9.7	30	50	PPFM13	9.8	5	50
16	15.8	FINE	PIFS16	11.7	30	50	PIFH16	11.5	35	50	PPFM16	12.1	35	50
17	17.8	COARSE	PICS17	13.5	30	50	PICH17	13.2	35	50	-	-	-	-
21	21.2	FINE	PIFS21	16.6	35	50	-	-	-	-	PPFM21	16.8	40	50
21	21.2	COARSE	-	-	-	-	PICH21	16.4	40	50	-	-	-	-
22	21.8	COARSE	PICS22	16.4	35	50	PICH22	16.3	40	50	-	-	-	-
28	28.5	FINE	-	-	-	-	-	-	-	-	PPFM28	23.1	60	50
28	28.5	COARSE	PICS28	21.7	45	50	PICH28	21.5	50	50	-	-	-	-
34	34.5	FINE	-	-	-	-	-	-	-	-	PPFM34	29.1	50	50
34	34.5	COARSE	PICS34	27.7	55	25	PICH34	27.5	60	25	-	-	-	-
42	42.5	COARSE	PICS42	35.5	60	25	PICH42	35.3	65	25	-	-	-	-
54	54.5	COARSE	PICS54	46.6	70	25	PICH54	46.4	75	25	-	-	-	-

- See pages 38 - 45 for Technical Details
- See pages 34 - 35 for Cutting Tools and Instructions
- See page 23 for Accessories
- Minimum bend radius is minimum inside bend radius in static mode



◆ Corrugated profile with fine pitch for increased cable carrying capacity or coarse pitch for increased flexibility

TYPE PA Polyamide (Nylon) 6 in black or grey

TYPE PR Modified Polyamide (Nylon) 6 in black or grey

TYPE PI Modified Polyamide 11 in black or grey (Heavyweight in black only)

TYPE PP Polypropylene in black



◆ Light, standard & heavy weights available

www.adaptaflex.com

adapталок system

STRAIGHT ONE-PIECE PUSH-ON LIQUID TIGHT IP66 FITTINGS

TYPE A IP66

STRAIGHT FITTING – FIXED EXTERNAL THREAD
For insertion into threaded entries & knockouts.
Black (BL) and Grey (GR).



TYPE PPA IP66

STRAIGHT FITTING – FIXED EXTERNAL THREAD
For insertion into threaded entries & knockouts.
Black only.



NOMINAL CONDUIT SIZE	METRIC THREAD	PART NUMBER*	PG THREAD	PART NUMBER	METRIC THREAD	PART NUMBER*
10	M12	AL10/M12/A	PG7	AL10/PG7/A	–	–
10	–	–	PG9	AL10/PG9/A	–	–
13	M16	AL13/M16/A	PG9	AL13/PG9/A	M16	AL13/M16/PPA
13	–	–	PG11	AL13/PG11/A	–	–
13	–	–	PG13.5	AL13/PG13/A	–	–
16	M16	AL16/M16/A	PG9	AL16/PG9/A	M16	AL16/M16/PPA
16	M20	AL16/M20/A	PG11	AL16/PG11/A	–	–
16	–	–	PG13.5	AL16/PG13/A	–	–
16	–	–	PG16	AL16/PG16/A	–	–
18	–	–	PG13.5	AL18/PG13/A	–	–
20	M20	AL20/M20/A	–	–	–	–
21	M20	AL21/M20/A	PG11	AL21/PG11/A	M20	AL21/M20/PPA
21	–	–	PG13.5	AL21/PG13/A	–	–
21	–	–	PG16	AL21/PG16/A	–	–
25	M25	AL25/M25/A	–	–	–	–
28	M25	AL28/M25/A	PG21	AL28/PG21/A	M25	AL28/M25/PPA
34	M32	AL34/M32/A	PG29	AL34/PG29/A	M32	AL34/M32/PPA
42	M40	AL42/M40/A	PG36	AL42/PG36/A	–	–
54	M50	AL54/M50/A	PG48	AL54/PG48/A	–	–
54	M63	AL54/M63/A	–	–	–	–

Adaptalok fittings' simple push and twist mounting ensures high mechanical strength and IP66 assembly with Type PA/PR/PI/PP conduits, whilst unauthorised or accidental removal is prevented by the necessity to use a screwdriver or removal tool.

Adaptalok fittings complement LFH Type PA & PR conduits for assured fire performance with Nylon versions constructed from the PA66 grade giving added mechanical strength over PA6 fittings.

Type PPA fittings combine with conduit Type PP to provide an acid resistant flexible system.

Adaptalok fittings are available in 2 basic forms, namely fixed threaded fittings in a wide range of thread forms or those comprising a polyamide (Nylon) body with an integrated nickel plated brass thread or coupling.

The latter type incorporates an inherent swivel feature allowing elbow versions (pages 7 - 9) to be positioned easily, reducing the possibility of damage due to sideways movement of the conduit.

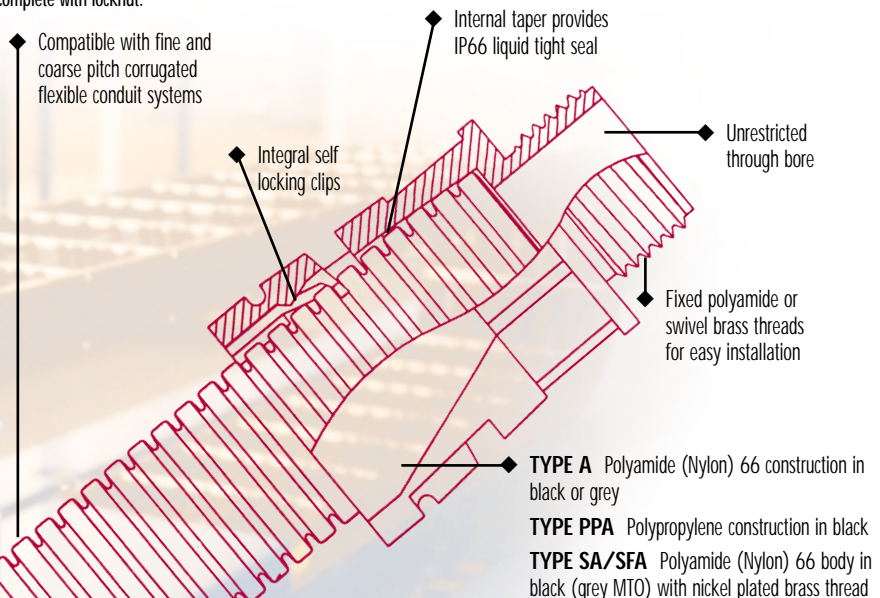
Swivel Adaptalok fittings can be MADE TO ORDER – MTO – to meet a particular specification of thread or coupling.

- See pages 38 - 45 for technical details
- For accessories see pages 23
- MTO indicates MADE TO ORDER. Phone the ADAPTALEX INFOLINE below for minimum order quantities & availability

To order complete Part No, add colour - e.g. AL21/M20/A/BL

*Supplied complete with locknut.

NOMINAL CONDUIT SIZE	PF THREAD	PART NUMBER	NPT THREAD	PART NUMBER*
10	1/4	AL10/PF025/A	–	–
13	3/8	AL13/PF038/A	3/8	AL13/038/A
16	3/8	AL16/PF038/A	3/8	AL16/038/A
16	1/2	AL16/PF050/A	1/2	AL16/050/A
17	–	–	1/2	AL17/050/A
21	1/2	AL21/PF050/A	1/2	AL21/050/A
22	–	–	1/2	AL22/050/A
28	3/4	AL28/PF075/A	3/4	AL28/075/A
34	1	AL34/PF100/A	1	AL34/100/A
42	1 1/4	AL42/PF125/A	1 1/4	AL42/125/A
54	1 1/2	AL54/PF150/A	1 1/2	AL54/150/A
54	2	AL54/PF200/A	2	MTO

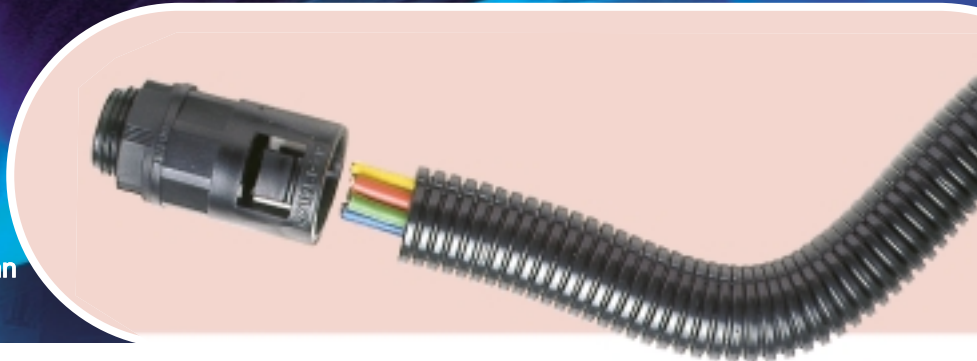


Infoline: 01675 468202

www.adaptaflex.com



NF
NORME FRANÇAISE



Approvals may be limited to certain products, see approvals on page 44.

TYPE SA IP66

STRAIGHT BODY – SWIVEL EXTERNAL THREAD
For insertion into threaded entries & knockouts
Black only. Grey made to order.



TYPE SFA IP66

STRAIGHT BODY – SWIVEL INTERNAL THREAD
For attachment to external threads & other fittings
Black only. Grey made to order.



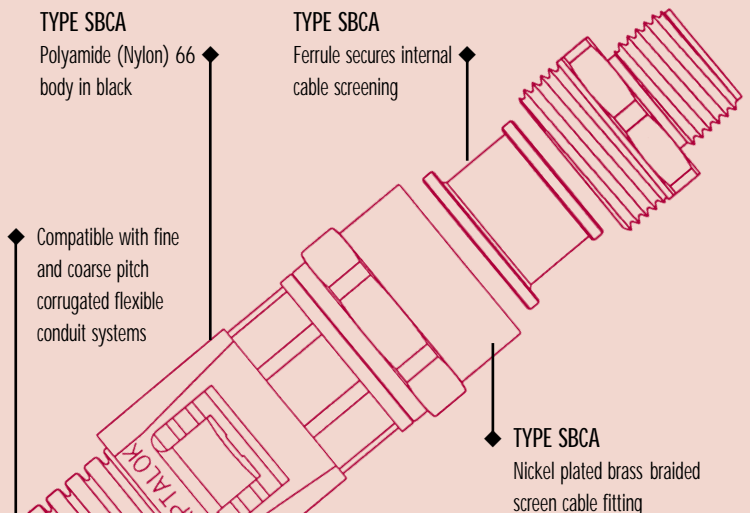
TYPE SBCA IP65

STRAIGHT SCREEN CABLE FITTING – SWIVEL EXTERNAL THREAD
For insertion into threaded entries & knockouts.
Black only. Grey made to order.



NOMINAL CONDUIT SIZE	METRIC THREAD	PART NUMBER	PG THREAD	PART NUMBER	METRIC THREAD	PART NUMBER	PG THREAD	PART NUMBER	METRIC THREAD	PART NUMBER	PG THREAD	PART NUMBER
10	-	-	-	-	-	-	-	-	-	-	-	-
10	-	-	-	-	-	-	-	-	-	-	-	-
13	M16	AL13/M16/SA/	PG9	AL13/PG9/SA/	M16	AL13/M16/SFA/	PG9	AL13/PG9/SFA/	-	-	PG9	AL13/PG9/SBCA/
13	-	-	PG11	MTO	-	-	PG11	MTO	-	-	-	-
13	-	-	PG13.5	MTO	-	-	PG13.5	MTO	-	-	-	-
16	M16	AL16/M16/SA/	PG9	MTO	M16	AL16/M16/SFA/	PG9	MTO	-	-	-	-
16	-	-	PG11	AL16/PG11/SA/	-	-	PG11	AL16/PG11/SFA/	-	-	PG11	AL16/PG11/SBCA/
16	-	-	PG13.5	MTO	-	-	PG13.5	MTO	-	-	-	-
16	-	-	PG16	MTO	-	-	PG16	MTO	-	-	-	-
18	-	-	-	-	-	-	-	-	-	-	-	-
20	-	-	-	-	-	-	-	-	-	-	-	-
21	M20	AL21/M20/SA/	PG11	MTO	M20	AL21/M20/SFA/	PG11	MTO	M20	MTO	PG11	MTO
21	-	-	PG13.5	AL21/PG13/SA/	-	-	PG13.5	AL21/PG13/SFA/	-	-	PG13.5	MTO
21	-	-	PG16	AL21/PG16/SA/	-	-	PG16	AL21/PG16/SFA/	-	-	PG16	AL21/PG16/SBCA/
25	-	-	-	-	-	-	-	-	-	-	-	-
28	M25	AL28/M25/SA/	PG21	AL28/PG21/SA/	M25	AL28/M25/SFA/	PG21	AL28/PG21/SFA/	M25	MTO	PG21	AL28/PG21/SBCA/
34	M32	AL34/M32/SA/	PG29	AL34/PG29/SA/	M32	AL34/M32/SFA/	PG29	AL34/PG29/SFA/	M32	MTO	PG29	AL34/PG29/SBCA/
42	M40	AL42/M40/SA/	PG36	AL42/PG36/SA/	M40	AL42/M40/SFA/	PG36	AL42/PG36/SFA/	M40	MTO	PG36	AL42/PG36/SBCA/
54	M50	AL54/M50/SA/	PG48	AL54/PG48/SA/	-	-	-	-	-	-	-	-
54	M63	AL54/M63/SA/	-	-	-	-	-	-	-	-	-	-

To order complete Part No, add colour - e.g. AL21/M20/SA/BL



www.adaptaflex.com

adapta lok system

CURVED 90° & 45° ONE-PIECE PUSH-ON LIQUID TIGHT IP66 FITTINGS

TYPE C90 IP66

90° ELBOW FITTING – FIXED EXTERNAL THREAD
For insertion into knockouts using a locknut.
Black (BL) and Grey (GR).



TYPE CS90 IP66

90° ELBOW BODY – SWIVEL EXTERNAL THREAD
For insertion into threaded entries & knockouts.
Black only. Grey made to order.



TYPE CSF90 IP66

90° ELBOW BODY – SWIVEL INTERNAL THREAD
For attachment to external threads & other fittings.
Black only. Grey made to order.



TYPE FLC90 IP66

90° ELBOW BODY – PANEL MOUNT FLANGE
For panel mounting via 2 or 4 hole fixing
& integral face seal. Black (BL) and Grey (GR).



NOMINAL CONDUIT SIZE	METRIC THREAD	PART NUMBER**	PG THREAD	PART NUMBER	METRIC THREAD	PART NUMBER	PG THREAD	PART NUMBER	METRIC THREAD	PART NUMBER	PG THREAD	PART NUMBER	PART NUMBER
10	M12	AL10/M12/C90	PG7	AL10/PG7/C90	-	-	-	-	-	-	-	-	-
13	M16	AL13/M16/C90	PG9	AL13/PG9/C90	M16	AL13/M16/CS90/	PG9	AL13/PG9/CS90/	M16	AL13/M16/CSF90/	PG9	AL13/PG9/CSF90/	-
13	-	-	-	-	-	-	PG11	MTO	-	-	PG11	MTO	-
13	-	-	-	-	-	-	PG13.5	MTO	-	-	PG13.5	MTO	-
16	M16	AL16/M16/C90	PG9	AL16/PG9/C90	M16	AL16/M16/CS90/	PG9	MTO	M16	AL16/M16/CSF90/	PG9	MTO	AL16/FL/C90
16	M20	AL16/M20/C90	PG11	AL16/PG11/C90	-	-	PG11	AL16/PG11/CS90/	-	-	PG11	AL16/PG11/CSF90/	-
16	-	-	PG13.5	AL16/PG13/C90	-	-	PG13.5	MTO	-	-	PG13.5	MTO	-
16	-	-	-	-	-	-	PG16	MTO	-	-	PG16	MTO	-
18	-	-	PG13.5	*AL18/PG13/90	-	-	-	-	-	-	-	-	-
21	M20	AL21/M20/C90	-	-	-	-	PG11	MTO	M20	AL21/M20/CSF90/	PG11	MTO	-
21	-	-	PG13.5	AL21/PG13/C90	M20	AL21/M20/CS90/	PG13.5	AL21/PG13/CS90/	-	-	PG13.5	AL21/PG13/CSF90/	AL21/FL/C90
21	-	-	PG16	AL21/PG16/C90	-	-	PG16	AL21/PG16/CS90/	-	-	PG16	AL21/PG16/CSF90/	-
28	M25	AL28/M25/C90	PG21	AL28/PG21/C90	M25	AL28/M25/CS90/	PG21	AL28/PG21/CS90/	M25	AL28/M25/CSF90/	PG21	AL28/PG21/CSF90/	AL28/FL/C90
34	M32	AL34/M32/C90	PG29	AL34/PG29/C90	M32	AL34/M32/CS90/	PG29	AL34/PG29/CS90/	M32	AL34/M32/CSF90/	PG29	AL34/PG29/CSF90/	AL34/FL/90
42	M40	AL42/M40/C90	PG36	AL42/PG36/C90	M40	AL42/M40/CS90/	PG36	AL42/PG36/CS90/	M40	AL42/M40/CSF90/	PG36	AL42/PG36/CSF90/	AL42/FL/90
54	M50	AL54/M50/C90	PG48	AL54/PG48/C90	M50	AL54/M50/CS90/	PG48	AL54/PG48/CS90/	-	-	-	-	AL54/FL/90
54	M63	AL54/M63/C90	-	-	M63	AL54/M63/CS90/	-	-	-	-	-	-	-

**Supplied with locknut.

To order complete Part No, add colour - e.g. AL21/M20/CS90/BL

NOMINAL CONDUIT SIZE	PF THREAD	PART NUMBER	NPT THREAD	PART NUMBER**
13	3/8	AL13/PF038/C90	3/8	AL13/038/C90
16	3/8	AL16/PF038/C90	3/8	AL16/038/C90
16	1/2	AL16/PF050/C90	1/2	AL16/050/C90
17	1/2	-	1/2	AL17/050/C90
21	1/2	AL21/PF050/C90	1/2	AL21/050/C90
22	1/2	-	1/2	AL22/050/C90
28	3/4	AL28/PF075/C90	3/4	AL28/075/C90
34	1	AL34/PF100/C90	1	AL34/100/C90
42	1 1/4	AL42/PF125/C90	1 1/4	AL42/125/C90
54	1 1/2	AL54/PF150/C90	1 1/2	AL54/150/C90
54	2	AL54/PF200/C90	2	AL54/200/C90

TYPE C90 Polyamide (Nylon) 66 construction in black or grey

TYPE CS90/CSF90 Polyamide (Nylon) 66 body in black or grey with nickel plated brass thread

TYPE FL/A & FL/45 - IP66

PANEL MOUNTING SWIVEL FLANGE, WITH INTEGRAL FACE SEAL
For straight (A) and 45° elbows, available in black & grey



NOMINAL CONDUIT SIZE	PART NUMBER TYPE FL/A	PART NUMBER TYPE FL/45
21	AL21/FL/A	AL21/FL/45
28	AL28/FL/A	AL28/FL/45

Compatible with fine & coarse pitch corrugated flexible conduit systems

Fixed Polyamide or swivel brass threads for easy installation

www.adaptaflex.com

Infoline: 01675 468202



NF
NORME FRANÇAISE



Approvals may be limited to certain products, see approvals on page 44.

TYPE 45 IP66

45° ELBOW FITTING – FIXED EXTERNAL THREAD
For insertion into knockouts using a locknut.
Black (BL) and Grey (GR).



TYPE S45 IP66

45° ELBOW BODY – SWIVEL EXTERNAL THREAD
For insertion into threaded entries & knockouts.
Black only. Grey made to order.



TYPE SF45 IP66

45° ELBOW BODY – SWIVEL INTERNAL THREAD
For attachment to external threads & other fittings.
Black only. Grey made to order.



NOMINAL CONDUIT SIZE	METRIC THREAD	PART NUMBER**	PG THREAD	PART NUMBER	METRIC THREAD	PART NUMBER	PG THREAD	PART NUMBER	METRIC THREAD	PART NUMBER	PG THREAD	PART NUMBER
13	M16	AL13/M16/45	PG9	AL13/PG9/45	M16	AL13/M16/S45/	PG9	AL13/PG9/S45/	M16	AL13/M16/SF45/	PG9	AL13/PG9/SF45/
13	-	-	-	-	-	-	PG11	MTO	-	-	PG11	MTO
13	-	-	-	-	-	-	PG13.5	MTO	-	-	PG13.5	MTO
16	M16	AL16/M16/45	PG11	AL16/PG11/45	-	-	-	-	M16	AL16/M16/SF45/	PG9	MTO
16	M20	AL16/M20/45	PG13.5	AL16/PG13/45	M16	AL16/M16/S45/	PG9	MTO	-	-	PG11	AL16/PG11/SF45/
16	-	-	-	-	-	-	PG11	AL16/PG11/S45/	-	-	PG13.5	MTO
16	-	-	-	-	-	-	PG13.5	MTO	-	-	PG16	MTO
18	-	-	-	-	-	-	PG16	MTO	-	-	PG11	-
21	M20	AL21/M20/45	-	-	M20	AL21/M20/S45/	PG11	-	M20	AL21/M20/SF45/	PG13.5	AL21/PG13/SF45/
21	-	-	PG13.5	AL21/PG13/45	-	-	PG13.5	AL21/PG13/S45/	-	-	PG16	AL21/PG16/SF45/
21	-	-	PG16	AL21/PG16/45	-	-	PG16	AL21/PG16/S45/	-	-	-	-
28	M25	AL28/M25/45	PG21	AL28/PG21/45	M25	AL28/M25/S45/	PG21	AL28/PG21/S45/	M25	AL28/M25/SF45/	PG21	AL28/PG21/SF45/
34	M32	AL34/M32/45	PG29	AL34/PG29/45	M32	AL34/M32/S45/	PG29	AL34/PG29/S45/	M32	AL34/M32/SF45/	PG29	AL34/PG29/SF45/
42	M40	AL42/M40/45	PG36	AL42/PG36/45	M40	AL42/M40/S45/	PG36	AL42/PG36/S45/	M40	AL42/M40/SF45/	PG36	AL42/PG36/SF45/
54	M50	AL54/M50/45	PG48	AL54/PG48/45	M50	AL54/M50/S45/	PG48	AL54/PG48/S45/	-	-	-	-
54	M63	AL54/M63/45	-	-	M63	AL54/M63/S45/	-	-	-	-	-	-

**Supplied with locknut.

To order complete Part No, add colour - e.g. AL21/M20/45/BL

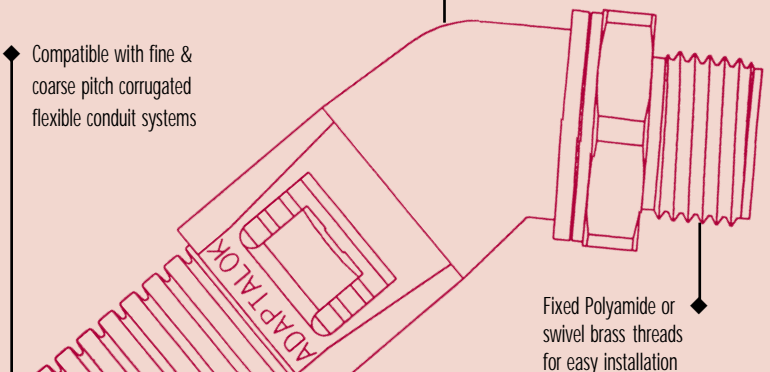
- See pages 38 - 45 for Technical Details
- See pages 34 for Cutting Tools
- See page 23 for Accessories

NOMINAL CONDUIT SIZE	PF THREAD	PART NUMBER	NPT THREAD	PART NUMBER
21	1/2	AL21/PF050/45	1/2	AL21/050/45
28	3/4	AL28/PF075/45	3/4	AL28/075/45
34	1	AL34/PF100/45	1	AL34/100/45
42	1 1/4	AL42/PF125/45	1 1/4	AL42/125/45
54	1 1/2	AL54/PF150/45	1 1/2	AL54/150/45
54	2	AL54/PF200/45	2	AL54/200/45



Compatible with fine & coarse pitch corrugated flexible conduit systems

TYPE 45 Polyamide (Nylon) 66 construction in black or grey
TYPE S45/SF45 Polyamide (Nylon) 66 body in black or grey with nickel plated brass thread



www.adaptaflex.com

adaptalok unef circular connector fittings



NF
NORME FRANÇAISE



Deutsche Bahn



Approvals may be limited to certain products, see approvals on page 44.

TYPE A IP66

STRAIGHT BODY –
SWIVEL INTERNAL THREAD
For coupling to UNEF circular connectors.
Black only.



TYPE C90 IP66

90° ELBOW BODY –
SWIVEL INTERNAL THREAD
For coupling to UNEF circular connectors.
Black only.



TYPE 45 IP66

45° ELBOW BODY –
SWIVEL INTERNAL THREAD
For coupling to UNEF circular connectors.
Black only.



CONDUIT SIZE	CONNECTOR UNEF THREAD	PART NUMBER	PART NUMBER	PART NUMBER
13	5/8" - 24	AL13/U063/A/000620	AL13/U063/C90/000620	AL13/U063/45/000620
13	3/4" - 20	AL13/U075/A/000620	AL13/U075/C90/000620	AL13/U075/45/000620
13	7/8" - 20	AL13/U088/A/000620	AL13/U088/C90/000620	AL13/U088/45/000620
16	5/8" - 24	AL16/U063/A/000620	AL16/U063/C90/000620	AL16/U063/45/000620
16	3/4" - 20	AL16/U075/A/000620	AL16/U075/C90/000620	AL16/U075/45/000620
16	13/16" - 20	AL16/U081/A/000620	AL16/U081/C90/000620	AL16/U081/45/000620
16	7/8" - 20	AL16/U088/A/000620	AL16/U088/C90/000620	AL16/U088/45/000620
16	15/16" - 20	AL16/U094/A/000620	AL16/U094/C90/000620	AL16/U094/45/000620
16	1" - 20	AL16/U100/A/000620	AL16/U100/C90/000620	AL16/U100/45/000620
16	1 1/8" - 18	AL16/U119/A/000620	AL16/U119/C90/000620	AL16/U119/45/000620
16	1 1/16" - 18	AL16/U131/A/000620	AL16/U131/C90/000620	AL16/U131/45/000620
21	3/4" - 20	AL21/U075/A/000620	AL21/U075/C90/000620	AL21/U075/45/000620
21	7/8" - 20	AL21/U088/A/000620	AL21/U088/C90/000620	AL21/U088/45/000620
21	15/16" - 20	AL21/U094/A/000620	AL21/U094/C90/000620	AL21/U094/45/000620
21	1" - 20	AL21/U100/A/000620	AL21/U100/C90/000620	AL21/U100/45/000620
21	1 1/8" - 18	AL21/U113/A/000620	AL21/U113/C90/000620	AL21/U113/45/000620
21	1 3/16" - 18	AL21/U119/A/000620	AL21/U119/C90/000620	AL21/U119/45/000620
21	1 5/16" - 18	AL21/U131/A/000620	AL21/U131/C90/000620	AL21/U131/45/000620
21	1 7/16" - 18	AL21/U138/A/000620	AL21/U138/C90/000620	AL21/U138/45/000620
21	1 7/8" - 18	AL21/U144/A/000620	AL21/U144/C90/000620	AL21/U144/45/000620
21	1 3/4" - 18	AL21/U175/A/000620	AL21/U175/C90/000620	AL21/U175/45/000620
28	7/8" - 20	AL28/U088/A/000620	AL28/U088/C90/000620	AL28/U088/45/000620
28	15/16" - 20	AL28/U094/A/000620	AL28/U094/C90/000620	AL28/U094/45/000620
28	1" - 20	AL28/U100/A/000620	AL28/U100/C90/000620	AL28/U100/45/000620
28	1 1/8" - 18	AL28/U119/A/000620	AL28/U119/C90/000620	AL28/U119/45/000620
28	1 3/8" - 18	AL28/U138/A/000620	AL28/U138/C90/000620	AL28/U138/45/000620
28	1 1/2" - 18	AL28/U144/A/000620	AL28/U144/C90/000620	AL28/U144/45/000620
28	1 3/4" - 18	AL28/U175/A/000620	AL28/U175/C90/000620	AL28/U175/45/000620
28	2" - 18	AL28/U200/A/000620	AL28/U200/C90/000620	AL28/U200/45/000620
28	2 1/4" - 18	AL28/U225/A/000620	AL28/U225/C90/000620	AL28/U225/45/000620
34	1" - 20	AL34/U100/A/000620	AL34/U100/C90/000620	AL34/U100/45/000620
34	1 1/8" - 18	AL34/U119/A/000620	AL34/U119/C90/000620	AL34/U119/45/000620
34	1 1/16" - 18	AL34/U144/A/000620	AL34/U144/C90/000620	AL34/U144/45/000620
34	1 3/8" - 18	AL34/U175/A/000620	AL34/U175/C90/000620	AL34/U175/45/000620
34	2" - 18	AL34/U200/A/000620	AL34/U200/C90/000620	AL34/U200/45/000620
42	1 3/4" - 18	AL42/U175/A/000620	AL42/U175/C90/000620	AL42/U175/45/000620
42	2" - 18	AL42/U200/A/000620	AL42/U200/C90/000620	AL42/U200/45/000620

Infoline: 01675 468202



NF
NORME FRANÇAISE



Approvals may be limited to certain products, see approvals on page 44.

PUSH-IN FITTING

Inserts into a 20mm knock-out, panel thickness up to 4mm, no locknut required. Black and grey.



SWIVEL COUPLER IP66

STRAIGHT PA66 BODY – SWIVEL COUPLER
For coupling to corrugated flexible conduit.
Black only.



3-WAY COUPLER IP66

3-WAY PA66 FITTING
For coupling to corrugated flexible conduit.
Black and grey.



REMOVAL TOOL

BLACK ONLY

Adaptalok removal tool, closes around the conduit, is then pushed into the fitting, releasing the retaining lugs allowing fitting to be removed.



NOMINAL CONDUIT SIZE mm	PART NUMBER	PART NUMBER	NOMINAL CONDUIT SIZE COMBINATION	PART NUMBER	PART NUMBER
13	-	AL13-AL13/A/000040	13x10x10	AL131010/Y	AL13RT
16	AL16/KM20/A	AL16-AL16/A/000040	16x13x13	AL161313/Y	AL16RT
21	AL21/KM20/A	AL21-AL21/A/000040	21x16x16	AL211616/Y	AL21RT
28	-	AL28-AL28/A/000040	28x21x21	AL282121/Y	AL28RT
34	-	AL34-AL34/A/000040	-	-	AL34RT
42	-	AL42-AL42/A/000040	-	-	AL42RT
54	-	-	-	-	AL54RT
13-34	-	-	-	-	ALRTSET

- See pages 38 - 45 for Technical Details
- See page 23 for Accessories
- See pages 34 - 35 for Cutting Tools and Instructions
- See page 36 for alternative female coupler

To order complete Part No, add colour - e.g. AL131010/Y/BL

Adaptalok fittings' simple push and twist mounting ensures high mechanical strength and IP66 assembly with Type PA/PR/PI/PP conduits, whilst unauthorised or accidental removal is prevented by the necessity to use a screwdriver or tool.

Lightweight aluminium or polyamide (Nylon) threaded swivel Adaptalok fittings (opposite page) provide simple coupling to UNEF threaded military style multi-pin connectors whilst Adaptalok couplers (this page) facilitate the connection of other conduits in various arrangements.

ADAPTALOK
SYSTEM
FROM ADAPTAFLEX



Compatible with fine and coarse pitch corrugated flexible conduit systems

Polyamide (Nylon) 66 body in black

Internal O-ring seal connector

Thread swivels for easy installation

www.adaptaflex.com

Fittings



TYPE A IP66, IP67
& IP68 2 bar 30 minutes with SWM

STRAIGHT FITTING – FIXED EXTERNAL THREAD
For insertion into knockouts using a locknut.
Black only. Grey made to order.



TYPE C90 IP66, IP67
& IP68 2 bar 30 minutes

90° ELBOW FITTING – FIXED EXTERNAL THREAD
For insertion into knockouts using a locknut.
Black only. Grey made to order.



TYPE FL90 IP66, IP67
& IP68 2 bar 30 minutes

90° ELBOW FITTING – PANEL MOUNT FLANGE
For panel mounting via 4 hole fixing
& integral face seal.



NOMINAL CONDUIT SIZE	CONDUIT PITCH	METRIC THREAD	PART NUMBER*	PG THREAD	PART NUMBER	METRIC THREAD	PART NUMBER*	PG THREAD	PART NUMBER	PART NUMBER
10	FINE	M16	ASF10/M16/A	PG9	ASF10/PG9/A	M16	ASF10/M16/C90	PG9	ASF10/PG9/C90	–
13	FINE	M16	ASF13/M16/A	PG9	ASF13/PG9/A	M16	ASF13/M16/C90	PG9	ASF13/PG9/C90	–
16	FINE	M16	ASF16/M16/A	PG11	ASF16/PG11/A	M16	ASF16/M16/C90	PG11	ASF16/PG11/C90	–
16	FINE	M20	ASF16/M20/A	PG13.5	ASF16/PG13/A	M20	ASF16/M20/C90	PG13.5	ASF16/PG13/C90	–
21	FINE	M20	ASF21/M20/A	PG16	ASF21/PG16/A	M20	ASF21/M20/C90	PG16	ASF21/PG16/C90	–
21	COARSE	M20	ASC21/M20/A	PG16	ASC21/PG16/A	M20	ASC21/M20/C90	PG16	ASC21/PG16/C90	–
28	FINE	M25	ASF28/M25/A	PG21	ASF28/PG21/A	M25	ASF28/M25/C90	PG21	ASF28/PG21/C90	–
28	COARSE	M25	ASC28/M25/A	PG21	ASC28/PG21/A	M25	ASC28/M25/C90	PG21	ASC28/PG21/C90	–
34	FINE	M32	ASF34/M32/A	PG29	ASF34/PG29/A	M32	ASF34/M32/C90	PG29	ASF34/PG29/C90	ASF34/FL/90
34	COARSE	M32	ASC34/M32/A	PG29	ASC34/PG29/A	M32	ASC34/M32/C90	PG29	ASC34/PG29/C90	ASC34/FL/90
42	COARSE	M40	ASC42/M40/A	PG36	ASC42/PG36/A	M40	ASC42/M40/C90	PG36	ASC42/PG36/C90	ASC42/FL/90
54	COARSE	M50	ASC54/M50/A	PG48	ASC54/PG48/A	M50	ASC54/M50/C90	PG48	ASC54/PG48/C90	ASC54/FL/90

**Supplied with locknut.

To order complete Part No, add colour - e.g. ASF21/M20/A/BL

ADAPTASEAL[®]
SYSTEM
FROM ADAPTAFLEX

Adaptaseal compression fittings are widely used with Type PA/PR/PI conduits, e.g. in external applications requiring assured IP66, IP67 or IP68 weatherproofing, flexibility and high mechanical strength.

In addition, Adaptaseal fittings complement LFH Type PA & PR conduits for assured fire performance where public safety or the integrity of electronic equipment are of concern.



Approvals may be limited to certain products, see approvals on page 44.

Accessories

TYPE T IP66 & IP67

INSPECTION T-PIECE

For connection to corrugated flexible conduit.
Black only.



TYPE RK IP67

REDUCING KIT

For connection to a reduced conduit size.
Black only.



TYPE AWB

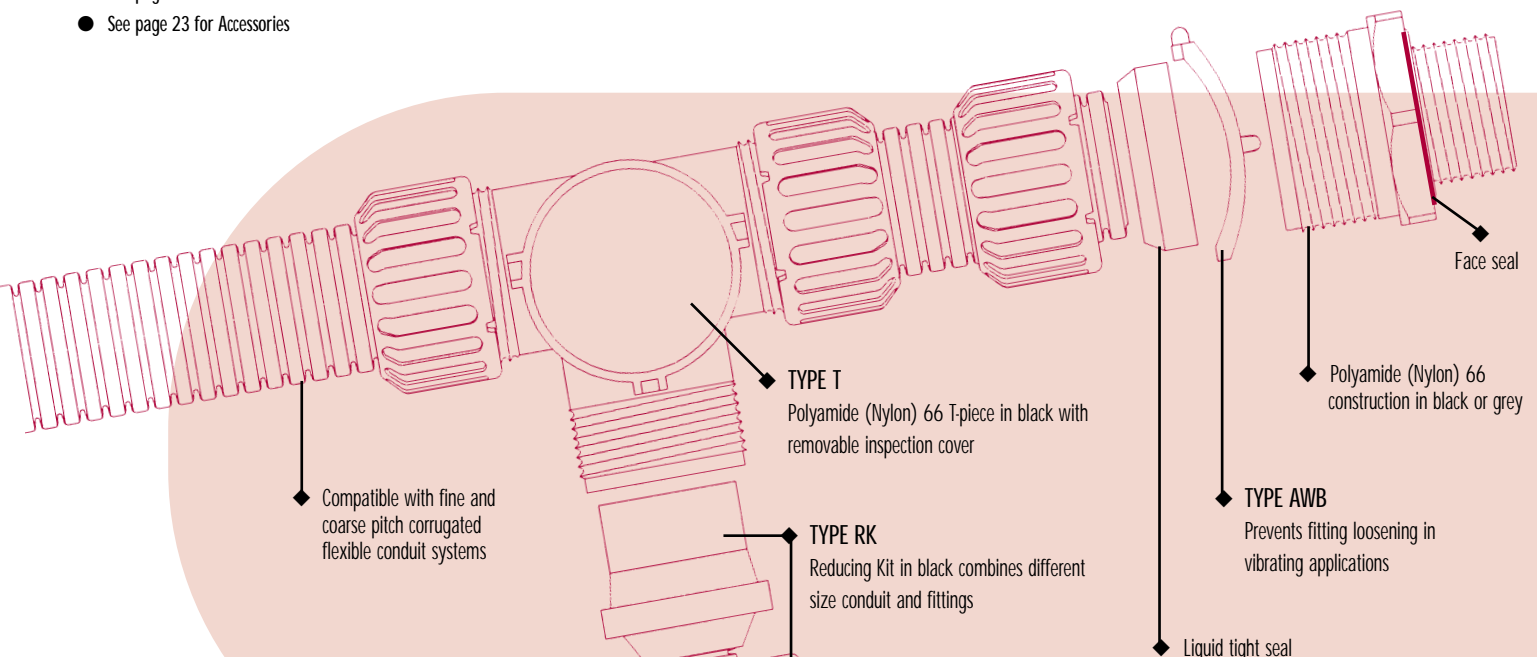
ANTI-VIBRATION WASHER

Acetal washer prevents fitting loosening under vibration.



FOR CONNECTION TO NOMINAL CONDUIT SIZE	PART NUMBER	REDUCING TO CONDUIT SIZE 10	REDUCING TO CONDUIT SIZE 13	REDUCING TO CONDUIT SIZE 16	REDUCING TO CONDUIT SIZE 21	REDUCING TO CONDUIT SIZE 28	PART NUMBER
10	ASF10X3/T	-	-	-	-	-	AWB13
13	ASF13X3/T	RK13-10	-	-	-	-	AWB13
16	ASF16X3/T	RK16-10	RK16-13	-	-	-	AWB16
21	ASF21X3/T	RK21-10	RK21-13	RK21-16	-	-	AWB21
21	ASC21X3/T	RK21-10	RK21-13	RK21-16	-	-	AWB21
28	ASF28X3/T	-	RK28-13	RK28-16	RK28-21	-	AWB28
28	ASC28X3/T	-	RK28-13	RK28-16	RK28-21	-	AWB28
34	ASF34X3/T	-	-	-	RK34-21	RK34-28	AWB34
34	ASC34X3/T	-	-	-	RK34-21	RK34-28	AWB34
-	-	-	-	-	-	-	-
-	-	-	-	-	-	-	-

- See pages 38 - 45 for Technical Details
- See page 23 for Accessories



Fittings

TYPE A IP40

STRAIGHT ROTATIONAL FITTING – EXTERNAL THREAD

For insertion into threaded entries & knockouts.
Black only. Grey made to order.



TYPE C90 IP40

90° ELBOW ROTATIONAL FITTING – EXTERNAL THREAD

For insertion into threaded entries & knockouts.
Black only. Grey made to order.



NOMINAL CONDUIT SIZE	METRIC THREAD	PART NUMBER**	PG THREAD	PART NUMBER	METRIC THREAD	PART NUMBER**
16	M16	AR16/M16/A	PG11	AR16/PG11/A	M16	AR16/M16/C90
16	M20	AR16/M20/A	PG13.5	AR16/PG13/A	M20	AR16/M20/C90
21	M20	AR21/M20/A	PG16	AR21/PG16/A	M20	AR21/M20/C90
28	M25	AR28/M25/A	PG21	AR28/PG21/A	M25	AR28/M25/C90
34	M32	AR34/M32/A	PG29	AR34/PG29/A	M32	AR34/M32/C90
42	M42	AR42/M40/A	PG36	AR42/PG36/A	M40	AR42/M40/C90
54	M50	AR54/M50/A	PG48	AR54/PG48/A	M50	AR54/M50/C90

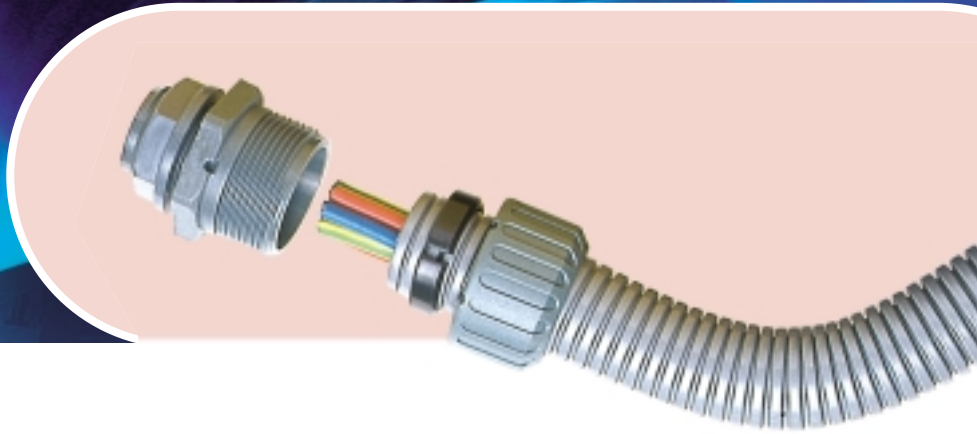
**Supplied with locknut.

To order complete Part No, add colour - e.g. AR21/M20/A/BL

ADAPTING
SYSTEM
FROM ADAPTALEX

Adapting fittings may be combined with LFH Type PA & PR conduits for assured fire performance in applications where water resistance is not required.

Ideally mounted onto Type PI conduit, the freely rotating C-ring incorporated in Adapting fittings avoids the risk of conduit failure due to wear or fracture in constantly rotating or twisting applications, e.g. in robotics or indoor CCTV mounting heads.



Approvals may be limited to certain products, see approvals on page 44.

Accessories

TYPE T IP40

ROTATIONAL INSPECTION T-PIECE
For connection to corrugated flexible conduit.
Black only.



PART NUMBER

AR16X3/T
AR21X3/T
AR28X3/T
AR34X3/T

TYPE AWB

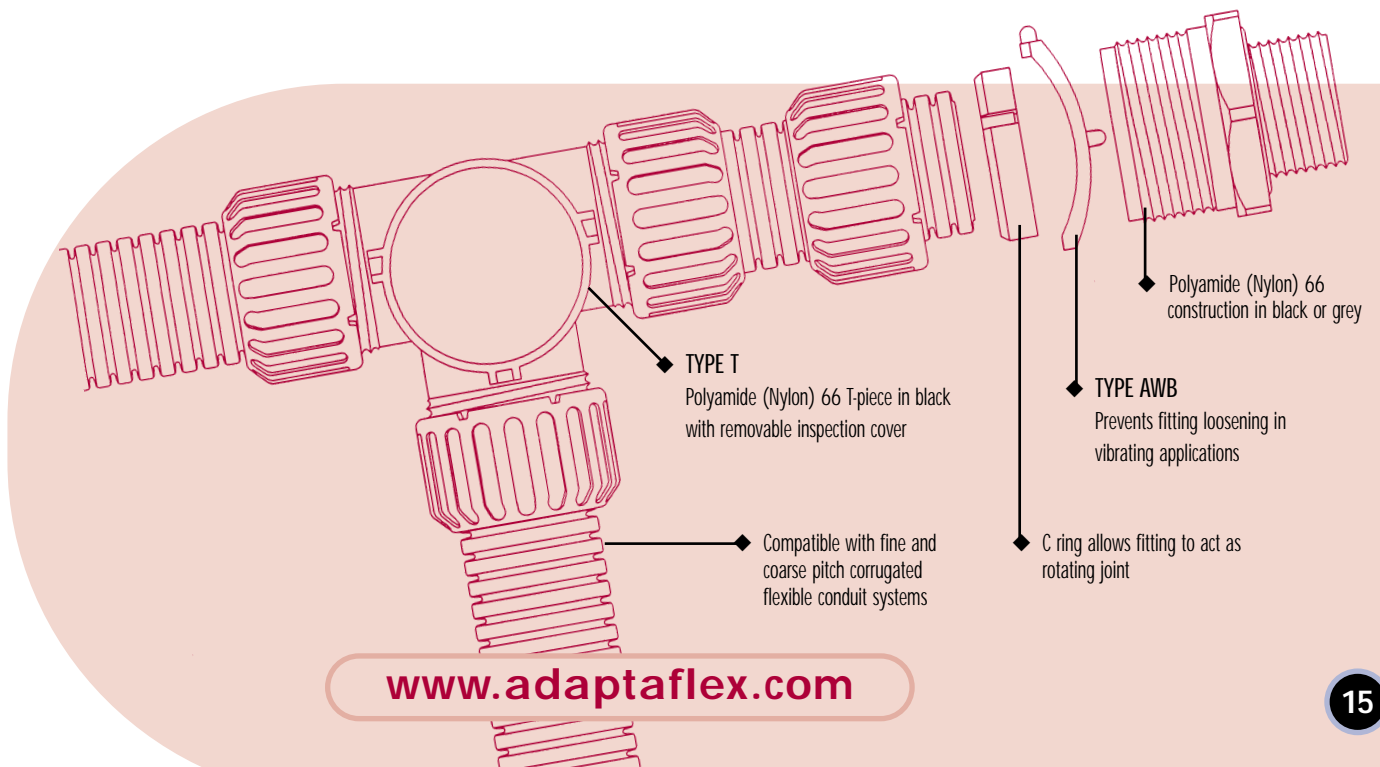
ANTI-VIBRATION WASHER



PART NUMBER

AWB16
AWB21
AWB28
AWB34

- See pages 38 - 45 for Technical Details
- See pages 34 - 35 for Cutting Tools and Instructions
- See page 23 for Accessories
- Minimum bend radius is minimum inside bend radius in static mode



Conduit

TYPE PA/PI

Black and Grey



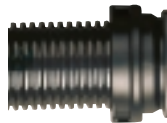
PART NUMBER	MATERIAL	OUTSIDE DIAMETER mm	INSIDE DIAMETER mm	MINIMUM BEND RADIUS mm	REEL LENGTH m
PACS80	PA6	79.3	67.3	160	10
PICS80	PA12	79.0	67.0	160	10
PACS106	PA6	106.0	91.5	210	10
PACS106	PA12	105.5	91.0	210	10

To order complete Part No, add reel length and colour - e.g. PACS80/BL/10M

Fittings

TYPE FL/A IP40

Straight flange



TYPE FL/90 IP40

90° flange



TYPE CP/90 IP40

90° Coupler



TYPE SK

Sealing kit to obtain IP65. Consists of 2 sealing washers and 2 'O' rings per kit.



PART NUMBER	PART NUMBER	PART NUMBER	PART NUMBER
ADC80/FL/A	ADC80/FL/90	ADC80/CP/90	SK80
ADC80/FL/A	ADC80/FL/90	ADC80/CP/90	SK80
ADC106/FL/A	ADC106/FL/90	ADC106/CP/90	SK106
ADC106/FL/A	ADC106/FL/90	ADC106/CP/90	SK106

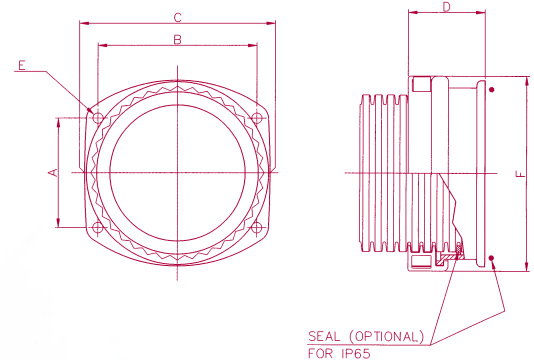
To order complete Part No, add colour - e.g. ADC80/FL/A/BL

The large diameter allows an increased number of cables to be carried through a single conduit, such as in machine tool installations, on heavy plant or large machinery installations. Standard conduit materials are nylon based PA6 for general purpose applications and PA12 where constant flexing is required - e.g. robotics. Other materials are available on request.

The snap together fittings allow easy and fast assembly, whilst the unique design smooth internal corner on the 90° flange allows cables to be drawn through more easily. The unique coupler design offers space saving by allowing a tighter bend radius around corners.

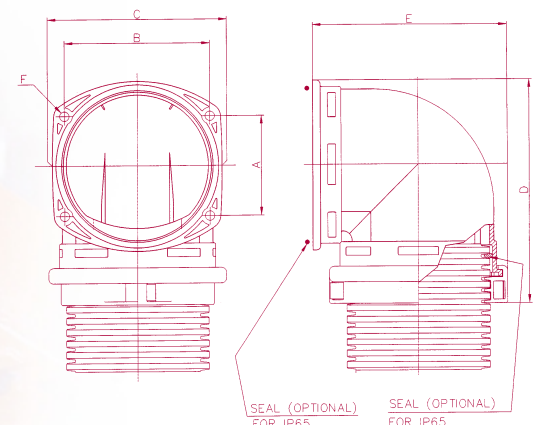
Fitting Dimensions

Nominal Dimensions	Part Numbers	
	ADC80/FL/A	ADC106/FL/A
A	60.0	74.0
B	80.0	108.0
C	98.0	126.0
D	52.5	52.5
E Ø	7.0	7.0
F	106.0	132.0



Nominal Dimensions	Part Numbers	
	ADC80/FL/90	ADC106/FL/90
A	60.0	74.0
B	80.0	108.0
C	96.0	126.0
D	128.0	166.0
E	110.5	144.0
F Ø	7.0	7.0

Type CP/90 coupler dimensions on request.



hinged 't' and 'y' pieces

HINGED IP40 'T' & 'Y' PIECES



Approvals may be limited to certain products, see approvals on page 44.

TYPE TH IP40 HINGED T-PIECE

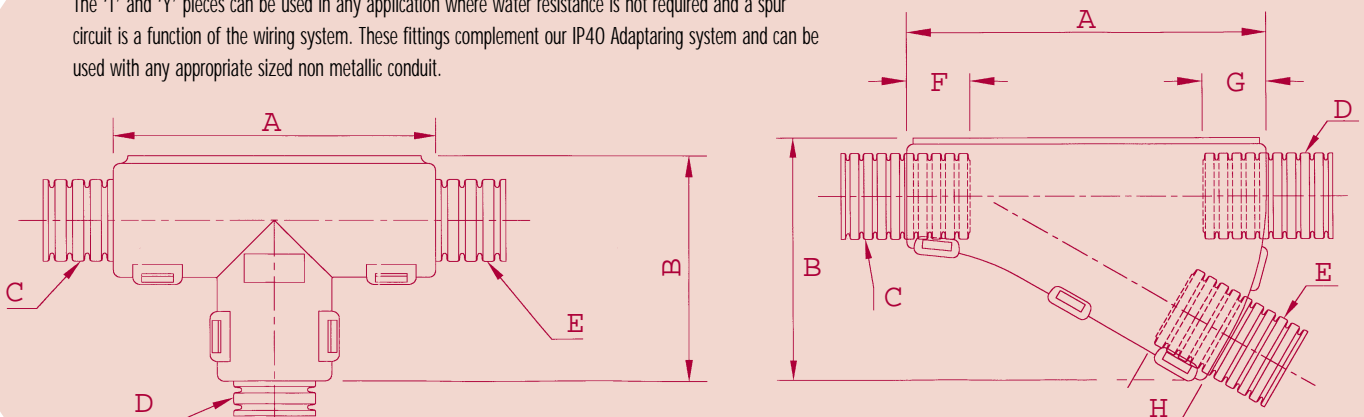


TYPE YH IP40 HINGED Y-PIECE



PART NUMBER	TYPE TH IP40						NOMINAL WEIGHT (g)	TYPE YH IP40								
	NOMINAL DIMENSIONS mm	NOMINAL DIMENSIONS mm	NOMINAL CONDUIT SIZE	NOMINAL CONDUIT SIZE	NOMINAL CONDUIT SIZE	NOMINAL CONDUIT SIZE		PART NUMBER	NOMINAL DIMENSIONS mm	NOMINAL DIMENSIONS mm	NOMINAL CONDUIT SIZE	NOMINAL CONDUIT SIZE	NOMINAL CONDUIT SIZE	NOMINAL CONDUIT SIZE	CONDUIT INSIDE FITTING mm	CONDUIT INSIDE FITTING mm
	A	B	C	D	E	(gms)		A	B	C	D	E	F	G	H	(gms)
T101010/BL	45.2	31.1	10	10	10	4.5	Y101010/BL	54.6	37.1	10	10	10	10	10	10	6.5
T101310/BL	45.2	31.1	10	13	10	4.5	Y131010/BL	54.6	37.1	13	10	10	10	10	10	6.5
T131010/BL	45.2	31.1	13	10	10	4.5	T131310/BL	54.6	37.1	13	13	10	10	10	10	6.0
T131013/BL	45.2	31.1	13	10	13	4.5	Y131313/BL	54.6	37.1	13	13	13	10	10	10	6.0
T131310/BL	45.2	31.1	13	13	10	4.5	Y161013/BL	54.9	39.8	16	10	13	10	10	10	7.0
T131313/BL	45.2	31.1	13	13	13	4.5	Y161310/BL	54.9	39.8	16	13	10	10	10	10	7.0
T131613/BL	45.2	31.1	13	16	13	5.0	Y161313/BL	54.9	39.8	16	13	13	10	10	10	7.0
T161013/BL	49.1	34.8	16	10	13	5.2	Y161610/BL	54.9	39.8	16	16	10	10	10	10	6.5
T161016/BL	49.1	34.8	16	10	16	6.0	Y161613/BL	54.9	39.8	16	16	13	10	10	10	6.5
T161313/BL	49.1	34.8	16	13	13	5.7	Y211010/BL	42.8	41.0	21	10	10	12	10	10	5.5
T161316/BL	49.1	34.8	16	13	16	5.9	Y211310/BL	42.8	41.0	21	13	10	12	10	10	5.5
T161613/BL	49.1	34.8	16	16	13	5.9	Y211313/BL	42.8	41.0	21	13	13	12	10	10	5.5
T161616/BL	49.1	34.8	16	16	16	6.2	Y211610/BL	48.2	39.6	21	16	10	12	10	10	6.5
T211021/BL	56.5	41.0	21	10	21	8.5	Y212110/BL	57.9	44.9	21	21	10	12	12	10	8.5
T211316/BL	56.5	41.0	21	13	16	8.6	Y212113/BL	57.9	44.9	21	21	13	12	12	10	8.5
T211321/BL	56.5	41.0	21	13	21	8.8	Y211616/BL	63.6	47.5	21	16	16	12	10	10	8.5
T211613/BL	56.5	41.0	21	16	13	8.4	Y212116/BL	63.6	47.5	21	21	16	12	12	10	9.5
T211616/BL	56.5	41.0	21	16	16	8.7	Y282113/BL	54.0	48.8	28	21	13	13	12	10	9.5
T211621/BL	56.5	41.0	21	16	21	8.8	Y282116/BL	54.0	48.8	28	21	13	13	12	10	11.2
T211113/BL	56.5	41.0	21	21	13	8.6	Y282810/BL	67.3	55.9	28	28	10	13	13	10	13.8
T212116/BL	56.5	41.0	21	21	16	8.9	Y282813/BL	67.3	55.9	28	28	13	13	13	10	13.9
T212121/BL	56.5	41.0	21	21	21	9.1	Y282816/BL	67.3	55.9	28	28	16	13	13	10	13.8
T281321/BL	64.5	48.6	28	13	21	13.2	Y282821/BL	76.5	60.0	28	28	21	13	13	12	16.7
T281621/BL	64.5	48.6	28	16	21	13.3	Y282828/BL	90.7	67.0	28	28	28	13	13	13	19.8
T282121/BL	64.5	48.6	28	21	21	13.8	Y343416/BL	100.6	75.0	34	34	16	13	13	13	30.4
T281328/BL	64.5	48.6	28	13	28	13.5	Y343421/BL	100.6	76.0	34	34	21	13	13	13	31.2
T281628/BL	64.5	48.6	28	16	28	13.6	Y343434/BL	100.6	82.1	34	34	34	13	13	13	32.4
T282128/BL	64.5	48.6	28	21	28	14.2	-	-	-	-	-	-	-	-	-	-
T282828/BL	64.5	48.6	28	28	28	14.2	-	-	-	-	-	-	-	-	-	-
T341634/BL	72.0	55.3	34	16	34	18.7	-	-	-	-	-	-	-	-	-	-
T342128/BL	72.0	55.3	34	21	28	18.8	-	-	-	-	-	-	-	-	-	-
T342134/BL	72.0	55.3	34	21	34	19.3	-	-	-	-	-	-	-	-	-	-
T343434/BL	72.0	55.3	34	34	34	21.2	-	-	-	-	-	-	-	-	-	-

The 'T' and 'Y' pieces can be used in any application where water resistance is not required and a spur circuit is a function of the wiring system. These fittings complement our IP40 Adapting system and can be used with any appropriate sized non metallic conduit.



hi-spec non-metallic flexible systems

- TYPE PK** – SUPER LOW FIRE HAZARD, HIGH TEMPERATURE
- TYPE PKTC** – SUPER LOW FIRE HAZARD, HIGH TEMPERATURE, HIGH EMI SCREEN
- TYPE PKSS** – SUPER LOW FIRE HAZARD, HIGH TEMPERATURE, ABUSE RESISTANT, STANDARD EMI SCREEN
- TYPE PRTC** – ENHANCED LOW FIRE HAZARD, HIGH EMI SCREEN
- TYPE PRSS** – ENHANCED LOW FIRE HAZARD, ABUSE RESISTANT, STANDARD EMI SCREEN

Conduit



TYPE PK
UNBRAIDED
Black only



PART NUMBER	PITCH	OUTSIDE DIAMETER mm	INSIDE DIAMETER mm	MINIMUM BEND RADIUS mm	REEL LENGTH m
PKFS13	FINE	13.0	10.0	35	MTO
PKFS16	FINE	15.8	11.7	45	50
PKFS21	FINE	21.2	16.6	60	50
PKCS28	COARSE	28.5	21.7	65	50
PKCS34	COARSE	34.5	27.7	80	50

Fittings

TYPE PK IP66 & IP67
STRAIGHT FITTING –
FIXED EXTERNAL THREAD
for insertion into knockouts using a locknut



METRIC THREAD	PART NUMBER
M16	PK13/M16/A
M16	PK16/M16/A
M20	PK21/M20/A
M25	PK28/M25/A
M32	PK34/M32/A

Conduit



TYPE PKTC
TINNED COPPER BRAIDED



PART NUMBER	PART NUMBER	PITCH	OUTSIDE DIAMETER mm	INSIDE DIAMETER mm	MINIMUM BEND RADIUS mm	REEL LENGTH m
PKFSTC13	PKFSSS13	FINE	14.1	10.0	35	MTO
PKFSTC16	PKFSSS16	FINE	17.2	11.7	45	50
PKFSTC21	PKFSSS21	FINE	23.6	16.6	60	50
PKCSTC28	PKCSSS28	COARSE	30.0	21.7	65	50
PKCSTC34	PKCSSS34	COARSE	36.0	27.7	80	50

TYPE PKSS
STAINLESS STEEL BRAIDED



To order complete Part No, add colour and reel length - e.g. PKFS21/BL/50M

HI-SPEC
SYSTEMS

Super low fire hazard (SLFH) Type PK conduit offers superior mechanical, radiation and chemical protection, often in extreme temperatures. Unbraided PEEK conduits are used with Type PK fittings.

Overbraided SLFH Type PKTC conduit meets high EMI screen specifications whilst Type PKSS conduit is overbraided to increase the security of installations in sensitive or high risk public areas e.g. in underground communications or lighting.

Overbraided enhanced low fire hazard (ELFH) Type PRTC adds high EMI screen to its fire performance approval for railway rolling stock or underground areas, whilst Type PRSS provides increased abuse resistance in similar applications, e.g. station platform or CCTV installations.

Infoline: 01675 468202



NF
NORME FRANÇAISE



BS EN 50086

LOW VOLTAGE
DIRECTIVE

Deutsche Bahn



Approvals may be limited to certain products, see approvals on page 44.

Conduit



TYPE PRTC
TINNED COPPER BRAIDED



TYPE PRSS
STAINLESS STEEL BRAIDED



Fittings

TYPE A IP66 & IP67

STRAIGHT FITTING – FIXED EXTERNAL THREAD
For insertion into threaded entries & knockouts

TYPE B IP66 & IP67

STRAIGHT FITTING – SWIVEL EXTERNAL THREAD
For insertion into threaded entries & knockouts



PART NUMBER	PART NUMBER	PITCH	OUTSIDE DIAMETER mm	INSIDE DIAMETER mm	MINIMUM BEND RADIUS mm	REEL LENGTH m	METRIC THREAD	PART NUMBER	METRIC THREAD	PART NUMBER	PG THREAD	PART NUMBER
PRFSTC16	PRFSSS16	FINE	17.2	11.7	35	50	M16	PBF16/M16/A	M16	PBF16/M16/B	PG11	PBF16/PG11/B
PRFSTC21	PRFSSS21	FINE	23.6	16.6	45	50	M20	PBF21/M20/A	M20	PBF21/M20/B	PG16	PBF21/PG16/B
PRCSTC28	PRCSSS28	COARSE	30.0	21.7	50	50	M25	PBC28/M25/A	M25	PBC28/M25/B	PG21	PBC28/PG21/B
PRCSTC34	PRCSSS34	COARSE	36.0	27.7	60	50	M32	PBC34/M32/A	M32	PBC34/M32/B	PG29	PBC34/PG29/B
PRCSTC42	PRCSSS42	COARSE	43.5	35.1	65	MTO	-	-	M40	PBC42/M40/B	PG36	PBC42/PG36/B
PRCSTC54	PRCSSS54	COARSE	56.5	46.6	75	MTO	-	-	M50	PBC54/M50/B	PG48	PBC54/PG48/B

To order complete Part No, add colour and reel length - e.g. PRFSTC21/BL/50M



CONDUIT
Non-metallic corrugated profile.
TYPE PK/TYPE PKTC/TYPE PKSS
Polyketone.
TYPE PRTC/TYPE PRSS
Modified Polyamide (Nylon) 6.

PROTECTIVE OVERBRAID
TYPE PRTC/TYPE PKTC
Tinned copper.
TYPE PRSS/TYPE PKSS
Stainless steel.

SEAL
High temperature silicone seal

TYPE B
Thread swivels for easy installation

FITTING
Nickel plated brass components



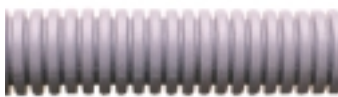
www.adaptaflex.com

korifit non-metallic pliable systems

TYPE KF – GENERAL PURPOSE PVCU FOR STATIC APPLICATIONS

Conduit

TYPE KF
LIGHT WEIGHT – GREY ONLY



TYPE KF
STANDARD WEIGHT – WHITE ONLY



TYPE KF
MEDIUM WEIGHT – BLACK ONLY



NOMINAL CONDUIT SIZE	OUTSIDE DIAMETER mm	PART NUMBER	INSIDE DIAMETER mm	MINIMUM BEND RADIUS mm	REEL LENGTH m	PART NUMBER	INSIDE DIAMETER mm	MINIMUM BEND RADIUS mm	REEL LENGTH m	PART NUMBER	INSIDE DIAMETER mm	MINIMUM BEND RADIUS mm	REEL LENGTH m
12	13.0	-	-	-	-	-	-	-	-	KFM12	9.5	20	50
16	16.0	KFL16	12.1	25	50	KFS16	11.9	25	50	KFM16	11.9	25	50
16	16.0	KFL16	12.1	25	50	KFS16	11.9	25	50	KFM16	11.9	25	50
20	20.0	KFL20	14.5	30	50	KFS20	14.3	30	50	KFM20	14.3	30	50
25	25.0	KFL25	19.9	40	50	KFS25	19.7	40	50	KFM25	19.7	40	50
32	34.5	KFL32	29.5	50	25	-	-	-	-	KFM32	29.5	50	25
40	42.5	KFL40	36.3	65	25	-	-	-	-	KFM40	36.1	65	25
50	54.5	KFL50	48.0	75	25	-	-	-	-	KFM50	47.7	75	25

To order complete Part No, add reel length - e.g. KFL20/50M. For KFS/M, add colour- e.g. KFS20/W/50M

KORIFIT[®]
SYSTEM
FROM ADAPTALEX

Korifit PVCU pliable systems Type KF are particularly suitable for burial in concrete, wiring protection and routing in static, light duty industrial and commercial installations where flexing is not required, e.g. in workshop, laboratory or retail premises.

IP65 water resistant fittings should be used where equipment is periodically cleaned, e.g. in kitchens or supermarkets.

White Korifit is often combined with white trunking or rigid conduit systems, e.g. in office cable management systems.

Infoline: 01675 468202



Approvals may be limited to certain products, see approvals on page 44.

Fittings

TYPE KC/A IP40 
 STRAIGHT FITTING – FIXED EXTERNAL THREAD
 For insertion into threaded entries & knockouts.
 Black, grey and white.*



TYPE KC/C90 IP40
 90° ELBOW FITTING – FIXED EXTERNAL THREAD
 For insertion into knockouts. Black only.



TYPE KF/A IP65 
 STRAIGHT FITTING – FIXED EXTERNAL THREAD
 For insertion into threaded entries & knockouts.
 Black, grey and white.



COUPLER IP65
 STRAIGHT ONE PIECE COUPLER
 For coupling to corrugated flexible conduit.
 White only.



METRIC THREAD	PART NUMBER**	METRIC THREAD	PART NUMBER**	METRIC THREAD	PART NUMBER**	PART NUMBER
M16	KC12/M16/A	-	-	-	-	-
M16	KC16/M16/A	M16	KC16/M16/C90/BL	M16	KF16/M16/A/	-
M20	KC16/M20/A	-	-	M20	KF16/M20/A/	-
M20	KC20/M20/A	M20	KC20/M20/C90/BL	M20	KF20/M20/A/	KF2020
M25	KC25/M25/A	M25	KC25/M25/C90/BL	M25	KF25/M25/A/	-
M32	KC32/M32/A	M32	KC32/M32/C90/BL	-	-	-
M40	KC40/M40/A	-	-	-	-	-
M50	KC50/M50/A	-	-	-	-	-

*white available in 20 and 25mm only

**supplied with locknut

To order complete Part No, add colour - e.g. KC16/M16/A/BL

- See pages 38 - 45 for Technical details
- See page 36 for conduit P-Clip Support
- See pages 34 - 35 for Cutting Tools & Instructions
- See page 23 for Accessories
- Minimum bend radius is minimum inside bend radius in static mode

TYPE KF Polyamide (Nylon) 66
 one-piece push-on fitting in white, black and grey

TYPE KC (not pictured)
 Polyamide (Nylon) 66 compression fitting in black
 or grey (KC/A sizes 20 & 25 available in white)

CONDUIT
KF LIGHT WEIGHT
 PVCU in grey
KF STANDARD WEIGHT
 PVCU in white
KF MEDIUM WEIGHT
 PVCU in black

COUPLER
 Polyamide (Nylon) 66
 one-piece push-on conduit coupler in white



xtraflex non-metallic flexible system

TYPE XF – GENERAL PURPOSE, TORSIONAL CAPABILITY, PVC



Approvals may be limited to certain products, see approvals on page 44.

Conduit

TYPE XF
Black only.



PART NUMBER	OUTSIDE DIAMETER mm	INSIDE DIAMETER mm	MINIMUM BEND RADIUS mm	REEL LENGTH m
XF12	14.5	10.0	25	30
XF16	16.5	12.0	30	30
XF16	16.5	12.0	30	30
XF20	20.5	16.0	35	30
XF25	27.5	22.0	50	30
XF32	33.5	28.0	60	30
XF40	44.0	38.0	80	30
XF50	57.5	50.0	105	30

Fittings

TYPE A IP65

STRAIGHT FITTING – FIXED EXTERNAL THREAD
For insertion into threaded entries & knockouts.
Black only.



METRIC THREAD	PART NUMBER
M16	XF12/M16/D
M16	XF16/M16/D
M20	XF16/M20/D
M20	XF20/M20/D
M25	XF25/M25/D
M32	XF32/M32/D
M40	XF40/M40/D
M50	XF50/M50/D

TYPE C90 IP65

90° ELBOW FITTING – FIXED EXTERNAL THREAD
For insertion into knockouts.
Black only.



METRIC THREAD	PART NUMBER
–	–
M16	XF16/M16/C90
–	–
M20	XF20/M20/C90
M25	XF25/M25/C90
M32	XF32/M32/C90
M40	MTO
M50	MTO

- See pages 38 - 45 for Technical details
- See page 5 for conduit P-Clip Support.
- See pages 34 - 35 for Cutting Tools & Instructions
- Minimum bend radius is minimum inside bend radius in static mode

To order complete Part No, add reel length - e.g. XF20/30M

The Xtraflex PVC system is ideally suitable within applications where twisting or torsional forces are likely to be applied to the conduit. The nature of its construction also allows it to bend to a very tight radius.

Type A or type C90 fittings will maintain an IP65 rating against ingress of solids and liquids.

XTRAFLEX[®]
SYSTEM
FROM ADAPTALEX

CONDUIT
Helical profile smooth bore PVCU spiral with plasticised PVC covering

Face seal

FITTING
Polyamide (Nylon) 66 compression type in black

Liquid resistant seal

Infoline: 01675 468202

non-metallic accessories

LOCKNUTS, CONDUIT CLIPS, PLASTIC THREAD CONVERTERS, END CAPS, SEALING WASHERS, END SLEEVES



Approvals may be limited to certain products, see approvals on page 44.

Nylon Locknuts



TO FIT THREAD

PA (NYLON)
BLACK

PA (NYLON)
GREY

Sealing Washers

TYPE SWM



TO FIT THREAD

RUBBER FACE
SEALING

Conduit Clips

TYPE AC

PA (Nylon) 66
construction with integral lid



NOMINAL
CONDUIT
SIZE mm

PART NUMBER
BLACK

PART NUMBER
GREY

End Caps

TYPE EC

Provide a smooth finish to prevent any damage to cables where the application is not terminated with a fitting.



NOMINAL
CONDUIT
SIZE mm

PART NUMBER

TO FIT THREAD	PA (NYLON) BLACK	PA (NYLON) GREY	TO FIT THREAD	RUBBER FACE SEALING	NOMINAL CONDUIT SIZE mm	PART NUMBER BLACK	PART NUMBER GREY	NOMINAL CONDUIT SIZE mm	PART NUMBER
M12	-	-	M12	-	10	ACB10	ACG10	-	-
M16	LNPB/M16	LNPG/M16	M16	SWM16	13	ACB13	ACG13	13	ECB13
M20	LNPB/M20	LNPG/M20	M20	SWM20	16	ACB16	ACG16	16	ECB16
M25	LNPB/M25	LNPG/M25	M25	SWM25	17	ACB17	ACG17	17	-
M32	LNPB/M32	LNPG/M32	M32	SWM32	21	ACB21	ACG21	21	ECB21
M40	LNPB/M40	LNPG/M40	M40	SWM40	22	ACB22	ACG22	28	ECB28
M50	LNPB/M50	LNPG/M50	M50	SWM50	28	ACB28	ACG28	34	ECB34
M63	LNPB/M63	LNPG/M63	M63	-	34	ACB34	ACG34	42	ECB42
-	-	-	M75	-	42	ACB42	ACG42	54	ECB54
PG7	LNPB/PG7	LNPG/PG7	PG7	SWPG7	54	ACB54	ACG54	-	-
PG9	LNPB/PG9	LNPG/PG9	PG9	SWPG9	-	-	-	-	-
PG11	LNPB/PG11	LNPG/PG11	PG11	SWPG11	-	-	-	-	-
PG13	LNPB/PG13	LNPG/PG13	PG13.5	SWPG13	-	-	-	-	-
PG16	LNPB/PG16	LNPG/PG16	PG16	SWPG16	-	-	-	-	-
PG21	LNPB/PG21	LNPG/PG21	PG21	SWPG21	-	-	-	-	-
PG29	LNPB/PG29	LNPG/PG29	PG29	SWPG29	-	-	-	-	-
PG36	LNPB/PG36	LNPG/PG36	PG36	SWPG36	-	-	-	-	-
PG42	LNPB/PG42	LNPG/PG42	PG42	SWPG42	-	-	-	-	-
PG48	LNPB/PG48	LNPG/PG48	PG48	SWPG48	-	-	-	-	-

Nylon Thread Convertors



EXTERNAL
THREAD

M16

M20

M25

End Sleeves

For sealing cables to non-metallic conduit



NOMINAL
CONDUIT
SIZE mm

PART
NUMBER

OLD PART NUMBER
(SHOWN IN
PRICE LIST)

EXTERNAL THREAD	M16	M20	M25	NOMINAL CONDUIT SIZE mm	PART NUMBER	OLD PART NUMBER (SHOWN IN PRICE LIST)
M20	P/M20-M16/R	-	-	13	ESN12	GZ9
M25	-	P/M25-M20/R	-	16	ESN16	GZ11
PG9	P/PG9-M16/TC	-	-	21	ESN20	GZ13
PG11	P/PG11-M16/TC	-	-	28	ESN28	GZ21
PG13	P/PG13-M16/TC	-	-	34	ESN32	GZ29
PG16	P/PG16-M16/TC	P/PG16-M20/TC	-	42	ESN40	GZ36
PG21	-	-	P/PG21-M25/TC	-	-	-

steel flexible systems

TYPE S – GENERAL PURPOSE, GALVANISED STEEL, INHERENT LOW FIRE HAZARD

TYPE SS – CORROSION RESISTANT, STAINLESS STEEL, INHERENT LOW FIRE HAZARD

Conduit

TYPES S & SS



Fittings

TYPE A IP40

STRAIGHT FITTING – FIXED EXTERNAL THREAD
For insertion into knockouts using a locknut



TYPE B IP40

STRAIGHT FITTING – SWIVEL EXTERNAL THREAD
For insertion into threaded entries & knockouts



TYPE S PART NUMBER	TYPE SS PART NUMBER	OUTSIDE DIAMETER mm	INSIDE DIAMETER mm	MINIMUM BEND RADIUS mm	REEL LENGTH m TYPE S ONLY	METRIC THREAD	PART NUMBER	PG THREAD	PART NUMBER	METRIC THREAD	PART NUMBER	PG THREAD	PART NUMBER
S10	-	9.0	6.8	25	25, 50	M12	S10/M12/A	PG7	S10/PG7/A	M12	S10/M12/B	PG7	S10/PG7/B
S12	SS12	13.0	10.3	30	25, 50	M16	S12/M16/A	PG9	S12/PG9/A	M16	S12/M16/B	PG9	S12/PG9/B
S16	SS16	16.0	13.0	35	10, 25, 50	M16	S16/M16/A	PG11	S16/PG11/A	M16	S16/M16/B	PG11	S16/PG11/B
S16	SS16	16.0	13.0	35	10, 25, 50	M20	S16/M20/A	PG11	S16/PG11/A	M20	S16/M20/B	PG11	S16/PG11/B
S20	SS20	20.5	16.9	45	10, 25, 50	M20	S20/M20/A	PG16	S20/PG16/A	M20	S20/M20/B	PG16	S20/PG16/B
S25	SS25	25.0	21.4	55	10, 25, 50	M25	S25/M25/A	PG21	S25/PG21/A	M25	S25/M25/B	PG21	S25/PG21/B
S32	SS32	32.0	28.1	60	10, 25	M32	S32/M32/A	PG29	S32/PG29/A	M32	S32/M32/B	PG29	S32/PG29/B
S40	-	42.5	37.7	80	10, 25	M40	S40/M40/A	PG36	S40/PG36/A	M40	S40/M40/B	PG36	S40/PG36/B
S50	-	53.0	48.4	90	10, 25	M50	S50/M50/A	PG42	S50/PG42/A	M50	S50/M50/B	PG42	S50/PG42/B
S63	-	62.5	57.5	115	10	M63	S63/M63/A	PG48	S63/PG48/A	-	-	-	-
S75	-	77.0	70.0	150	10	M75	S75/M75/A	-	-	-	-	-	-

Type SS - Made to order - Phone Infoline for details.

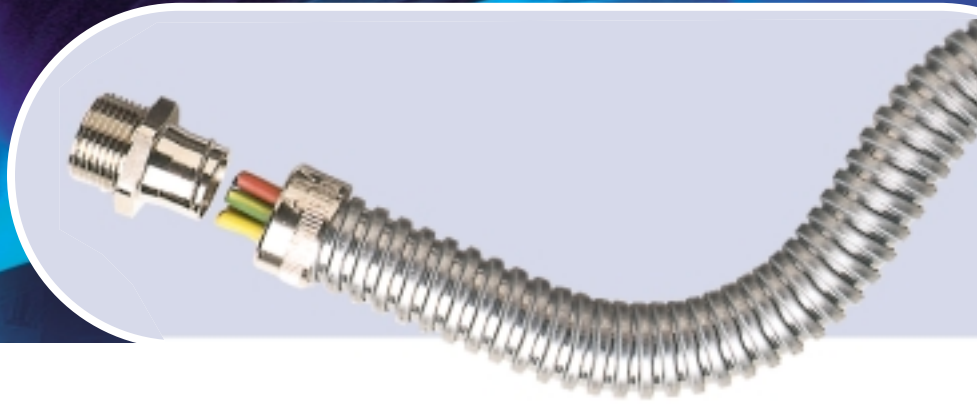
To order complete Part No, add reel length - e.g. S20/50M

ADAPTASTEEL[®]
SYSTEM
FROM ADAPTAFLEX

Plain steel systems are inherently low fire hazard (ILFH) and offer high flexibility and mechanical strength where low level ingress protection is sufficient.

Type S is widely used in dry, internal installations e.g. Underfloor wiring whereas Type SS is particularly suitable for wet or corrosive environments or severe temperature fluctuations.

Infoline: 01675 468202



Approvals may be limited to certain products, see approvals on page 44.

Accessories

TYPE F IP40

STRAIGHT FITTING – FIXED INTERNAL THREAD
For attachment to external threads & other fittings



METRIC THREAD

PART NUMBER

TYPE C IP40

SMOOTH ENTRY BUSH
For locking conduit into plain holes in enclosures



HOLE SIZE mm

PART NUMBER

TYPE P

P-CLIP CONDUIT SUPPORT
Plated steel construction with PVC insert



NOMINAL CONDUIT SIZE mm

PART NUMBER

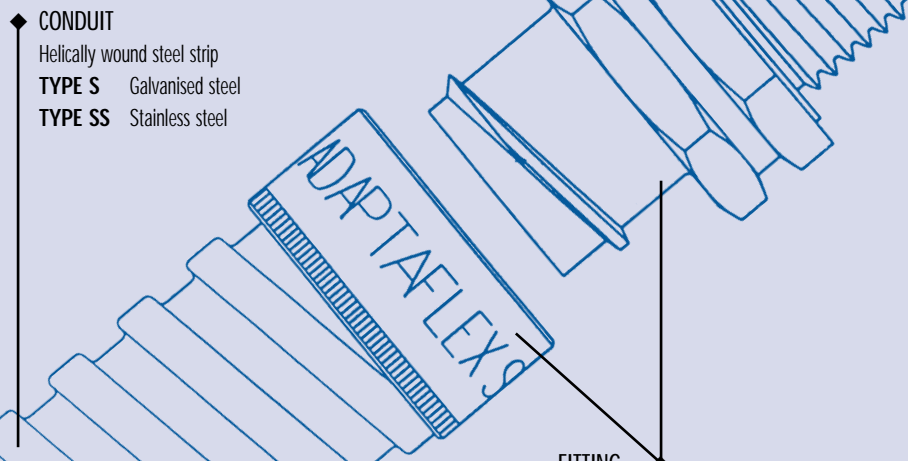
METRIC THREAD	PART NUMBER	HOLE SIZE mm	PART NUMBER	NOMINAL CONDUIT SIZE mm	PART NUMBER
-	-	9	S10/9/C	10	P CLIP/10
-	-	12	S12/12/C	12	P CLIP/12
-	-	16	S16/16/C	16	P CLIP/16
-	-	16	S16/16/C	16	P CLIP/16
M20	S20/M20/F	20	S20/20/C	20	P CLIP/20
M25	S25/M25/F	25	S25/25/C	25	P CLIP/25
M32	S32/M32/F	32	S32/32/C	32	P CLIP/32
-	-	40	S40/40/C	40	P CLIP/40
-	-	51	S50/51/C	50	P CLIP/50
-	-	61	S63/61/C	63	P CLIP/63
-	-	75	S75/75/C	75	P CLIP/75

- See pages 38 - 45 for Technical details
- See pages 34 - 37 for Cutting Tools & Accessories
- Minimum bend radius is minimum inside bend radius in static mode



CONDUIT
Helically wound steel strip
TYPE S Galvanised steel
TYPE SS Stainless steel

TYPE B
Thread swivels for easy installation



FITTING
Nickel plated brass components

www.adaptaflex.com

liquid resistant covered steel flexible systems

TYPE SP – GENERAL PURPOSE, PVC COVERED

TYPE SN – ABRASION & SOLVENT RESISTANT, HALOGEN FREE, POLYAMIDE (NYLON) COVERED

TYPE LFH-SP – ENHANCED LOW FIRE HAZARD, POLYOLEFIN COVERED



Conduit

TYPES SP, SN & LFH-SP

Black only. Grey and orange made to order, SP only.



Fittings

TYPE A IP54

STRAIGHT FITTING – FIXED EXTERNAL THREAD
For insertion into knockouts using a locknut.



TYPE B IP54

STRAIGHT FITTING – SWIVEL EXTERNAL THREAD
For insertion into threaded entries & knockouts



TYPE SP PART NUMBER	TYPE SN PART NUMBER	TYPE LFH-SP PART NUMBER	OUTSIDE DIAMETER mm	INSIDE DIAMETER mm	MINIMUM BEND RADIUS mm	REEL LENGTH m TYPE SP ONLY	METRIC THREAD	PART NUMBER	PG THREAD	PART NUMBER	METRIC THREAD	PART NUMBER	PG THREAD	PART NUMBER
SP10	-	-	10.0	6.8	25	25, 50	M12	SP10/M12/A	PG7	SP10/PG7/A	M12	SP10/M12/B	PG7	SP10/PG7/B
SP12	SN12	-	14.0	10.3	30	25, 50	M16	SP12/M16/A	PG9	SP12/PG9/A	M16	SP12/M16/B	PG9	SP12/PG9/B
SP16	SN16	LFH-SP16	17.0	13.0	35	10, 25, 50	M16	SP16/M16/A	PG11	SP16/PG11/A	M16	SP16/M16/B	PG11	SP16/PG11/B
SP16	SN16	LFH-SP16	17.0	13.0	35	10, 25, 50	M20	SP16/M20/A	PG11	SP16/PG11/A	M20	SP16/M20/B	PG11	SP16/PG11/B
SP20	SN20	LFH-SP20	21.5	16.9	45	10, 25, 50	M20	SP20/M20/A	PG16	SP20/PG16/A	M20	SP20/M20/B	PG16	SP20/PG16/B
SP25	SN25	LFH-SP25	26.0	21.4	55	10, 25, 50	M25	SP25/M25/A	PG21	SP25/PG21/A	M25	SP25/M25/B	PG21	SP25/PG21/B
SP32	SN32	LFH-SP32	34.0	28.1	60	10, 25	M32	SP32/M32/A	PG29	SP32/PG29/A	M32	SP32/M32/B	PG29	SP32/PG29/B
SP40	-	LFH-SP40	44.5	37.7	80	10, 25	M40	SP40/M40/A	PG36	SP40/PG36/A	M40	SP40/M40/B	PG36	SP40/PG36/B
SP50	-	LFH-SP50	55.0	48.4	90	10, 25	M50	SP50/M50/A	PG42	SP50/PG42/A	M50	SP50/M50/B	PG42	SP50/PG42/B
SP63	-	-	64.5	57.5	115	10	M63	SP63/M63/A	PG48	SP63/PG48/A	-	-	-	-
SP75	-	-	79.0	70.0	150	10	M75	SP75/M75/A	-	-	-	-	-	-

Reel lengths on Type SN & LFH-SP 12mm to 20mm - 50m only, 25mm to 50mm - 25m only.

To order complete Part No, add colour and reel length - e.g. SP20/BL/50M

ADAPTASTEEL[®]
SYSTEM
FROM ADAPTAFLEX

These versatile systems meet the limited dynamic or static and weatherproof requirements of most industrial and commercial applications.

Type SP is widely used in combination with rigid conduit and trunking, whilst halogen-free Type SN provides the enhanced resistance to solvents and abrasion over a wider temperature range.

The flame retardant, low smoke density and toxicity properties of halogen-free Type LFH-SP complement Fire Performance cable where public safety is of concern, e.g. in Hospitals, Shopping & Leisure centres and Underground Railways.

Infoline: 01675 468202



Deutsche Bahn



Approvals may be limited to certain products, see approvals on page 44.

TYPE M IP65

STRAIGHT SWIVEL FITTING – EXTERNAL THREAD
For insertion into threaded entries & knockouts

Fitting swivels independently of conduit until tightened to assist installation.



TYPE F IP54

STRAIGHT FITTING – FIXED INTERNAL THREAD

For attachment to external threads & other fittings



TYPE C IP54

SMOOTH ENTRY BUSH

For locking conduit into plain holes in enclosures



TYPE E

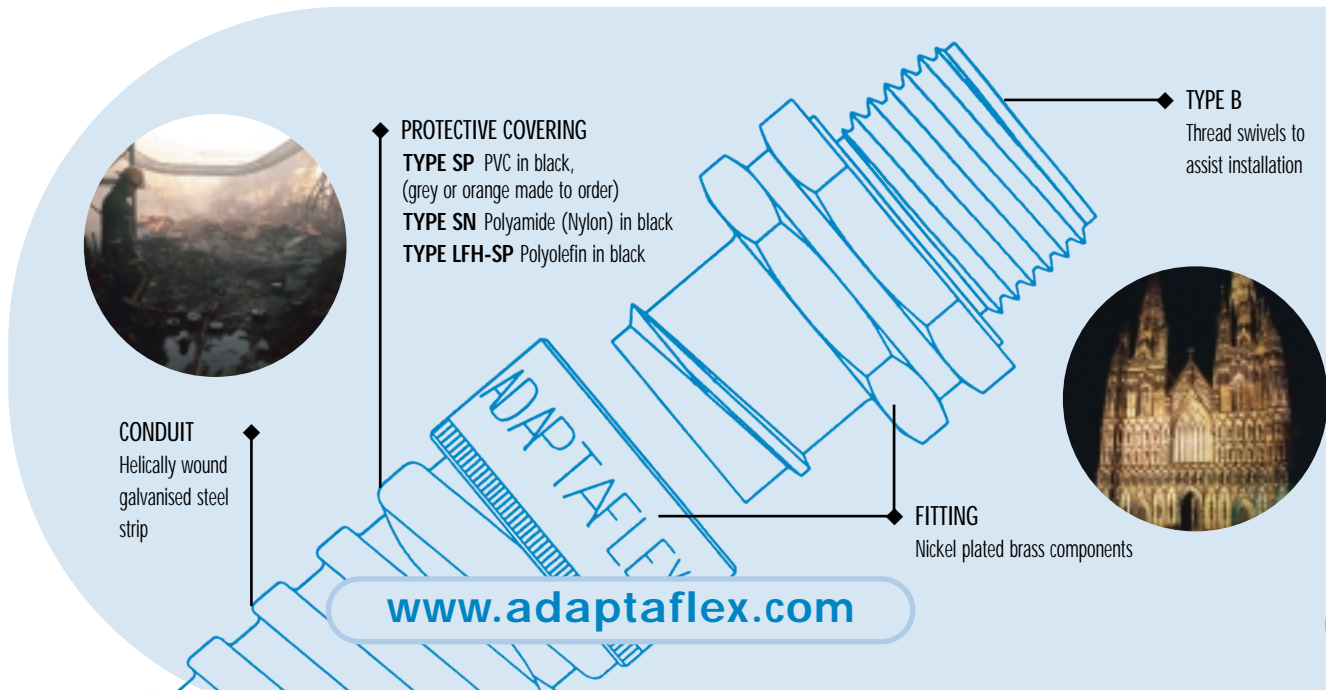
CONDUIT TERMINATOR

For protecting cables at point of exit from conduit



METRIC THREAD	PART NUMBER	PG THREAD	PART NUMBER	NPT THREAD	PART NUMBER	METRIC THREAD	PART NUMBER	HOLE SIZE mm	PART NUMBER	PART NUMBER
–	–	–	–	–	–	–	–	9	SP10/9/C	–
M16	SP12/M16/M	PG9	SP12/PG9/M	–	–	–	–	12	SP12/12/C	SP12/E
M16	SP16/M16/M	PG11	SP16/PG11/M	3/8	SP16/038/M	–	–	16	SP16/16/C	SP16/E
M20	SP16/M20/M	PG13.5	SP16/PG13/M	3/8	SP16/038/M	–	–	16	SP16/16/C	SP16/E
M20	SP20/M20/M	PG16	SP20/PG16/M	1/2	SP20/050/M	M20	SP20/M20/F	20	SP20/20/C	SP20/E
M25	SP25/M25/M	PG21	SP25/PG21/M	3/4	SP25/075/M	M25	SP25/M25/F	25	SP25/25/C	SP25/E
M32	SP32/M32/M	PG29	SP32/PG29/M	1	SP32/100/M	M32	SP32/M32/F	32	SP32/32/C	SP32/E
–	–	–	–	–	–	–	–	40	SP40/40/C	–
–	–	–	–	–	–	–	–	51	SP50/51/C	–
–	–	–	–	–	–	–	–	61	SP63/61/C	–
–	–	–	–	–	–	–	–	75	SP75/75/C	–

- See pages 38 - 45 for Technical details
- See pages 34 - 37 for Cutting Tools & Accessories
- Minimum bend radius is minimum inside bend radius in static mode



liquid tight covered steel flexible systems

- TYPE SPL** – HIGH & LOW TEMPERATURE, OIL RESISTANT, PVC COVERED
TYPE SPLHC – EXTREME TEMPERATURE, THERMOPLASTIC RUBBER COVERED
TYPE SPUL – UL LISTED, CSA APPROVED, PVC COVERED

Conduit

TYPE SPL Black only. Grey and orange made to order
TYPE SPLHC Black only
TYPE SPUL Grey only



Fittings

TYPE M IP66, 67 & 68 10 bar 30 minutes
 STRAIGHT SWIVEL FITTING – EXTERNAL THREAD
 For insertion into threaded entries & knockouts



TYPE SPL PART NUMBER	TYPE SPLHC PART NUMBER	TYPE SPUL PART NUMBER	US TRADE SIZE	UK TRADE SIZE	OUTSIDE DIAMETER mm	INSIDE DIAMETER mm	MINIMUM ** BEND RADIUS mm	REEL LENGTH m TYPE SPL	REEL LENGTH m TYPE SPLHC	REEL LENGTH m TYPE SPUL	METRIC THREAD	PART NUMBER	PG THREAD	PART NUMBER	NPT THREAD	PART NUMBER
SPL10	-	-	1/4"	10	11.8	7.0	40	10, 25, 50	-	-	M12	SPL10/M12/M	PG7	SPL10/PG7/M	-	-
SPL12	-	-	5/16"	12	14.2	10.0	45	10, 25, 50	-	-	M16	SPL12/M16/M	PG9	SPL12/PG9/M	-	-
SPL16	SPLHC16	SPUL16	3/8"	16	17.8	12.5	50	10, 25, 50	25	50	M16	SPL16/M16/M	PG11	SPL16/PG11/M	3/8	SPL16/038/M
SPL16	SPLHC16	SPUL16	3/8"	16	17.8	12.5	50	10, 25, 50	25	50	M20	SPL16/M20/M	PG13.5	SPL16/PG13/M	3/8	SPL16/038/M
SPL20	SPLHC20	SPUL20	1/2"	20	21.1	15.9	80	10, 25, 50	25	50	M20	SPL20/M20/M	PG16	SPL20/PG16/M	1/2	SPL20/050/M
SPL25	SPLHC25	SPUL25	3/4"	25	26.4	21.0	110	10, 25, 50	25	25	M25	SPL25/M25/M	PG21	SPL25/PG21/M	3/4	SPL25/075/M
SPL32	SPLHC32	SPUL32	1"	32	33.1	26.7	145	10, 25	25	25	M32	SPL32/M32/M	PG29	SPL32/PG29/M	1	SPL32/100/M
SPL40	SPLHC40	SPUL40	1 1/4"	40	41.8	35.4	180	10, 25	10	25	M40	SPL40/M40/M	PG36	SPL40/PG36/M	1 1/4	SPL40/125/M
SPL50	SPLHC50	SPUL50	1 1/2"	50	47.9	40.4	240	10, 25	10	25	M50	SPL50/M50/M	PG42	SPL50/PG42/M	1 1/2	SPL50/150/M
SPL63	SPLHC63	SPUL63	2"	63	59.7	51.6	345	10, 25	MTO	MTO	M63	SPL63/M63/M	PG48	SPL63/PG48/M	-	-

**Not applicable to SPUL

To order complete Part No, add colour and reel length - e.g. SPL20/BL/50M

ADAPTASTEEL[®]
 SYSTEM
 FROM ADAPTAFLEX

UL recognised & Lloyds approved liquid tight system Type SPL is typically found in Machining, Processing or Handling environments requiring assured high mechanical strength, oil resistance & ingress protection where higher temperatures may predominate.

Type SPLHC is particularly suited to extremes of temperature, whilst Type SPUL is both UL listed & CSA approved for extreme temperature liquid tight applications.



AUS Ex 930



Approvals may be limited to certain products, see approvals on page 44.

TYPE A IP67

STRAIGHT FITTING –
FIXED EXTERNAL THREAD
For insertion into knockouts using
a locknut



METRIC THREAD

PART NUMBER

TYPE B IP67

STRAIGHT FITTING –
SWIVEL EXTERNAL THREAD
For insertion into threaded entries
and knockouts



METRIC THREAD

PART NUMBER

TYPE E

CONDUIT TERMINATOR
For protecting cables
at point of exit from
conduit



PART NUMBER

TYPE C90 IP66, 67 & 68

90° COMBINED FITTING & ELBOW
WITH MALE EXTERNAL THREAD
NEW
Available end 2000.



METRIC THREAD

PART NUMBER

TYPE 45 IP67

45° ELBOW – FIXED INTERNAL
& EXTERNAL THREAD
Nickel plated brass



METRIC THREAD

PART NUMBER

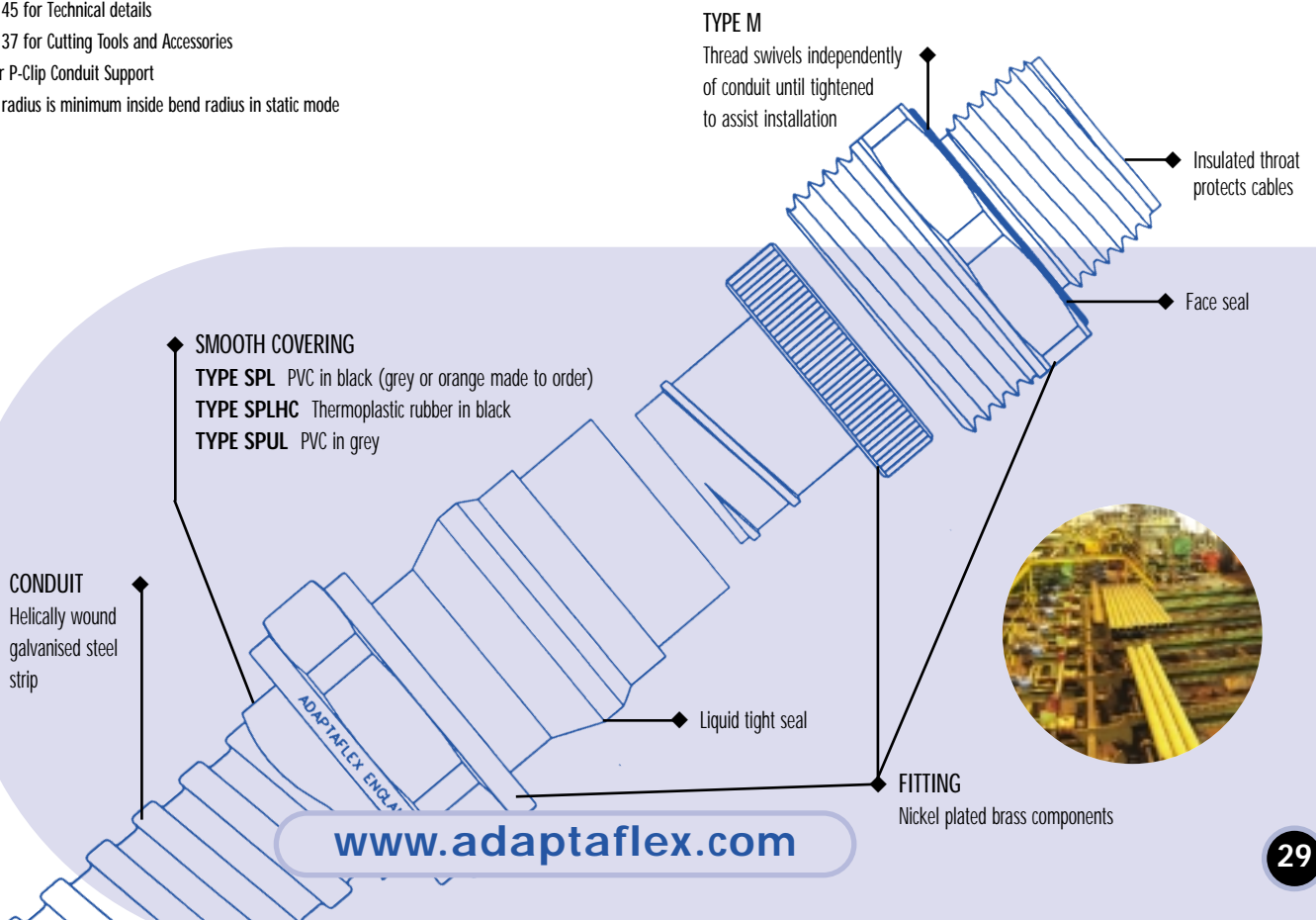
METRIC THREAD	PART NUMBER	METRIC THREAD	PART NUMBER	PART NUMBER	METRIC THREAD	PART NUMBER	METRIC THREAD	PART NUMBER
-	-	-	-	SPL10/E	-	-	-	-
-	-	-	-	SPL12/E	-	-	-	-
M16	SPL16/M16/A	M16	SPL16/M16/B	SPL16/E	M16	SPL16/M16/C90	M16*	B/M16/45
M20	SPL16/M20/A	M20	SPL16/M20/B	SPL16/E	M20	SPL16/M20/C90	M20	B/M20/45
M20	SPL20/M20/A	M20	SPL20/M20/B	SPL20/E	M20	SPL20/M20/C90	M20	B/M20/45
M25	SPL25/M25/A	M25	SPL25/M25/B	SPL25/E	M25	SPL25/M25/C90	M25	B/M25/45
M32	SPL32/M32/A	M32	SPL32/M32/B	SPL32/E	M32	SPL32/M32/C90	M32	B/M32/45
-	-	-	-	SPL40/E	M40	SPL40/M40/C90	-	-
-	-	-	-	SPL50/E	M50	SPL50/M50/C90	-	-
-	-	-	-	SPL63/E	M63	SPL63/M63/C90	-	-

* Incorporates M20 internal thread.

- See pages 38 - 45 for Technical details
- See pages 34 - 37 for Cutting Tools and Accessories
- See page 25 for P-Clip Conduit Support
- Minimum bend radius is minimum inside bend radius in static mode

TYPE M

Thread swivels independently
of conduit until tightened
to assist installation



www.adaptaflex.com

overbraided steel flexible systems

TYPE SB – ABRASION RESISTANT, ENHANCED EMI SCREEN, GALVANISED STEEL OVERBRAIDED

TYPE STC – HIGH EMI SCREEN, TINNED COPPER OVERBRAIDED

TYPE SPB – ABRASION & LIQUID RESISTANT, ENHANCED EMI SCREEN, GALVANISED STEEL OVERBRAIDED

TYPE SPTC – LIQUID RESISTANT, HIGH EMI SCREEN, TINNED COPPER OVERBRAIDED

Conduit



TYPES SB & STC



Fittings

TYPE A IP40

STRAIGHT FITTING – FIXED EXTERNAL THREAD
For insertion into knockouts using a locknut

TYPE B IP40

STRAIGHT FITTING – SWIVEL EXTERNAL THREAD
For insertion into threaded entries & knockouts



TYPE SB PART NUMBER	TYPE STC PART NUMBER	OUTSIDE DIAMETER mm	INSIDE DIAMETER mm	MINIMUM BEND RADIUS mm	REEL LENGTH m SB & STC	METRIC THREAD	PART NUMBER	METRIC THREAD	PART NUMBER	PG THREAD	PART NUMBER ALL MTO
SB10	STC10	10.0	6.8	25	25	M12	SB10/M12/A	M12	SB10/M12/B	PG7	SB10/PG7/B
SB12	STC12	14.0	10.3	30	25	M16	SB12/M16/A	M16	SB12/M16/B	PG9	SB12/PG9/B
SB16	STC16	17.5	13.0	35	25	M16	SB16/M16/A	M16	SB16/M16/B	PG11	SB16/PG11/B
SB20	STC20	21.5	16.9	45	25	M20	SB20/M20/A	M20	SB20/M20/B	PG16	SB20/PG16/B
SB25	STC25	26.0	21.4	55	25	M25	SB25/M25/A	M25	SB25/M25/B	PG21	SB25/PG21/B
SB32	STC32	34.0	28.1	60	10	M32	SB32/M32/A	M32	SB32/M32/B	PG29	SB32/PG29/B
SB40	STC40	43.6	37.7	80	10	M40	SB40/M40/A	M40	SB40/M40/B	PG36	SB40/PG36/B
SB50	STC50	56.0	48.4	90	10	M50	SB50/M50/A	M50	SB50/M50/B	PG42	SB50/PG42/B

Type STC - Made to order - Phone Infoline for details.

To order complete Part No, add reel length - e.g. SB20/25M

ADAPTA STEEL[®]
SYSTEM
FROM ADAPTAFLEX

Overbraided flexible systems can contribute significantly to the EMI screen requirements of installations covered by the EMC Directive, in addition to providing enhanced resistance to abrasion & mechanical damage, e.g. in the vicinity of metal machining or welding equipment.

Type SB is widely used in dry, high temperature environments whilst Type STC additionally offers a high level of EMI screen.

Type SPB adds weatherproofing and ingress protection to general applications whilst Type SPTC additionally meets high EMI screen specifications.

Infoline: 01675 468202



Approvals may be limited to certain products, see approvals on page 44.

Conduit

TYPES SPB & SPTC



Fittings

TYPE A IP54

STRAIGHT FITTING – FIXED EXTERNAL THREAD
For insertion into knockouts using a locknut



TYPE B IP54

STRAIGHT FITTING – SWIVEL EXTERNAL THREAD
For insertion into threaded entries & knockouts

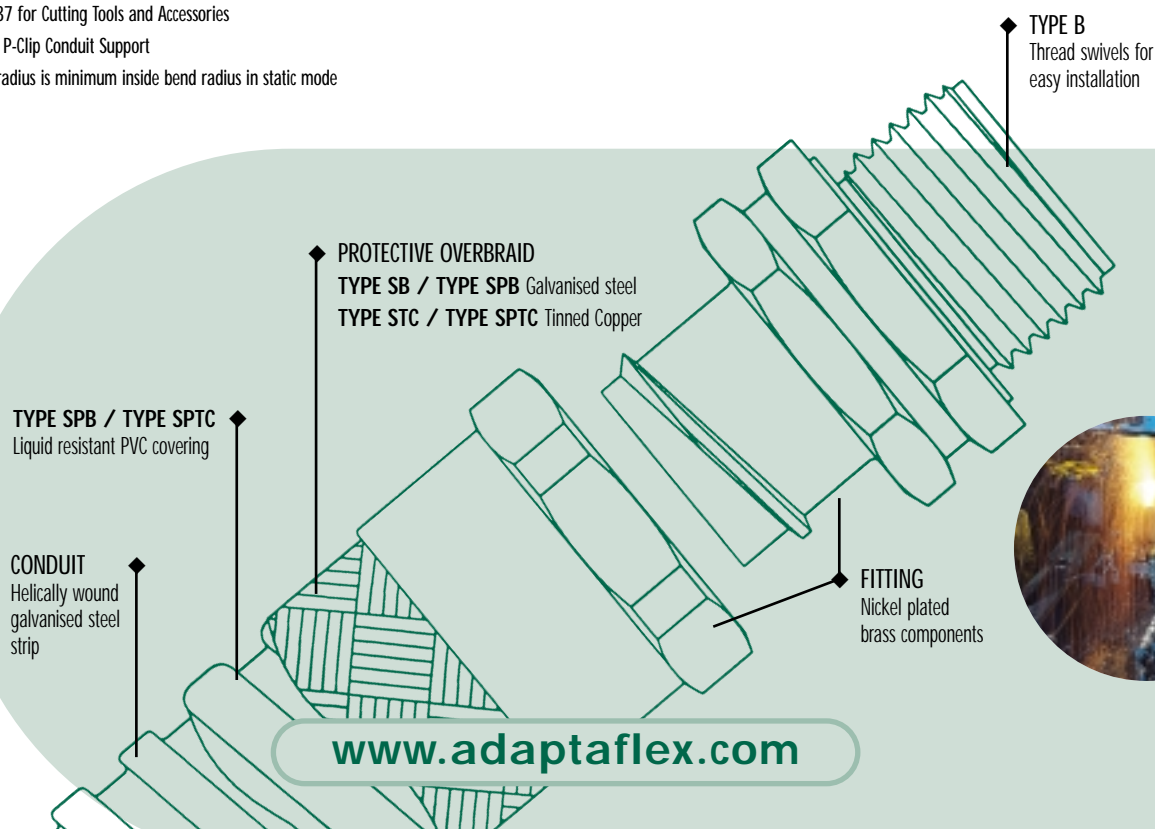


TYPE SPB PART NUMBER	TYPE SPTC PART NUMBER	OUTSIDE DIAMETER mm	INSIDE DIAMETER mm	MINIMUM BEND RADIUS mm	REEL LENGTH m SPB & SPTC	METRIC THREAD	PART NUMBER	METRIC THREAD	PART NUMBER	PG THREAD	PART NUMBER
SPB10	SPTC10	11.0	6.8	25	25	M12	SPB10/M12/A	M12	SPB10/M12/B	PG7	SPB10/PG7/B
SPB12	SPTC12	15.0	10.3	25	25	M16	SPB12/M16/A	M16	SPB12/M16/B	PG9	SPB12/PG9/B
SPB16	SPTC16	18.5	13.0	30	25	M16	SPB16/M16/A	M16	SPB16/M16/B	PG11	SPB16/PG11/B
SPB20	SPTC20	22.5	16.9	35	25	M20	SPB20/M20/A	M20	SPB20/M20/B	PG16	SPB20/PG16/B
SPB25	SPTC25	28.0	21.4	55	25	M25	SPB25/M25/A	M25	SPB25/M25/B	PG21	SPB25/PG21/B
SPB32	SPTC32	36.0	28.1	60	10	M32	SPB32/M32/A	M32	SPB32/M32/B	PG29	SPB32/PG29/B
SPB40	SPTC40	45.5	37.7	80	MTO	M40	SPB40/M40/A	M40	SPB40/M40/B	PG36	SPB40/PG36/B
SPB50	SPTC50	57.5	48.4	90	MTO	M50	SPB50/M50/A	M50	SPB50/M50/B	PG42	SPB50/PG42/B

Type SPTC - Made to order - Phone Infoline for details.

To order complete Part No, add reel length - e.g. SPB32/10M

- See pages 38 - 45 for Technical details
- See pages 34 - 37 for Cutting Tools and Accessories
- See page 25 for P-Clip Conduit Support
- Minimum bend radius is minimum inside bend radius in static mode



Liquid tight high strength overbraided steel system

TYPE SPLHCB – HIGH & LOW TEMPERATURE, ABUSE RESISTANT,
STANDARD EMI SCREEN, STAINLESS STEEL OVERBRAIDED



Conduit



TYPE SPLHCB



PART NUMBER	OUTSIDE DIAMETER mm	INSIDE DIAMETER mm	MINIMUM BEND RADIUS mm	METRIC THREAD	PART NUMBER	METRIC THREAD	PART NUMBER	PG THREAD	PART NUMBER
SPLHCB16	19.8	12.5	80	M16	SPLB16/M16/A	M16	SPLB16/M16/B	PG11	MTO
SPLHCB16	19.8	12.5	80	M20	SPLB16/M20/A	M20	SPLB16/M20/B	PG13	MTO
SPLHCB20	23.1	15.9	95	M20	SPLB20/M20/A	M20	SPLB20/M20/B	PG16	MTO
SPLHCB25	28.4	21.0	115	M25	SPLB25/M25/A	M25	SPLB25/M25/B	PG21	MTO
SPLHCB32	35.1	26.7	145	M32	SPLB32/M32/A	M32	SPLB32/M32/B	PG29	MTO
SPLHCB40	43.8	35.4	180	M40	SPLB40/M40/A	-	-	-	-
SPLHCB50	49.9	40.4	240	M50	SPLB50/M50/A	-	-	-	-

Type SPLHCB - Made to order - Phone Infoline for details.

Fittings

TYPE A IP66, IP67 & IP68 10 bar 30 minutes
STRAIGHT FITTING – FIXED EXTERNAL THREAD
For insertion into knockouts using a locknut

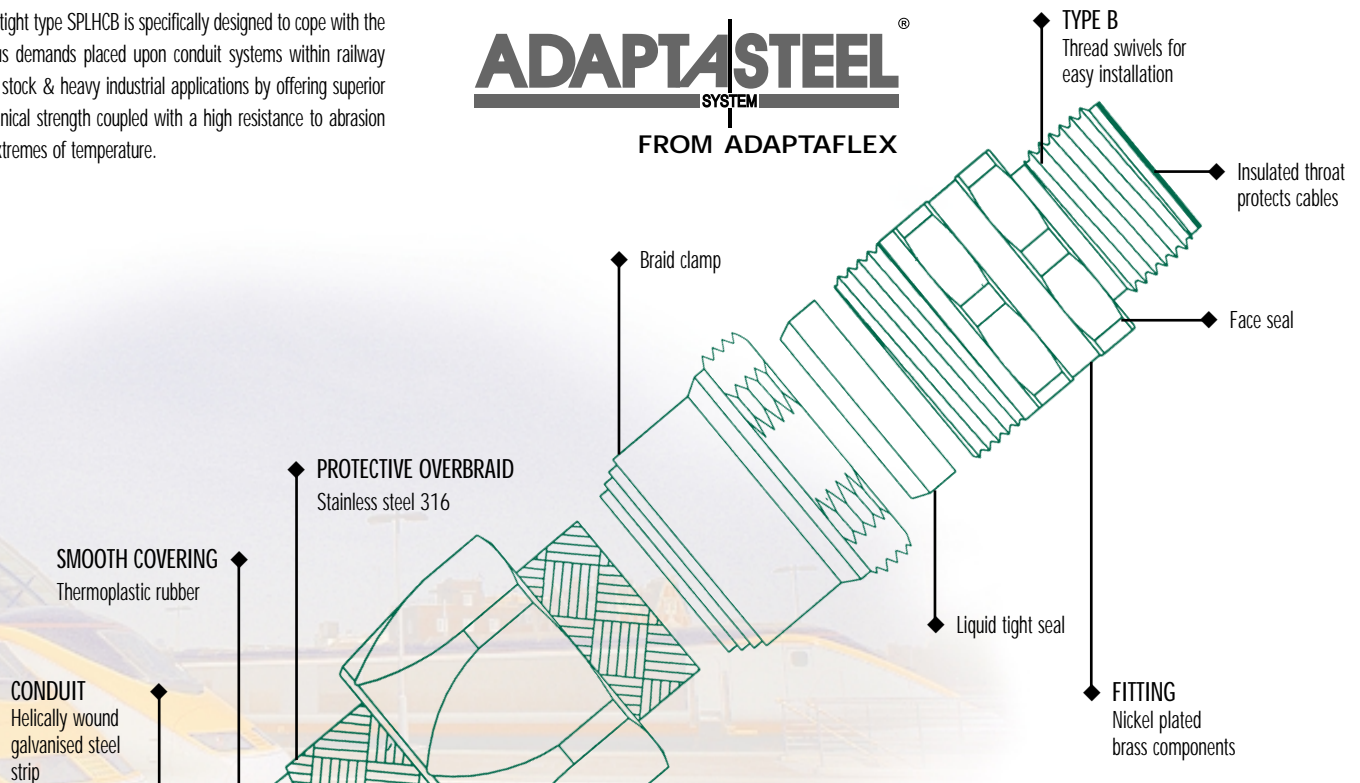


TYPE B IP66, IP67 & IP68 10 bar 30 minutes
STRAIGHT FITTING – SWIVEL EXTERNAL THREAD
For insertion into threaded entries & knockouts



Liquid tight type SPLHCB is specifically designed to cope with the arduous demands placed upon conduit systems within railway rolling stock & heavy industrial applications by offering superior mechanical strength coupled with a high resistance to abrasion and extremes of temperature.

ADAPTASTEEL[®]
SYSTEM
FROM ADAPTAFLEX



Infoline: 01675 468202

liquid tight pvc covered steel pliable system

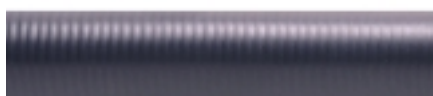
TYPE LSP – GENERAL PURPOSE STATIC APPLICATIONS



Approvals may be limited to certain products, see approvals on page 44.

Conduit

TYPE LSP



PART NUMBER	OUTSIDE DIAMETER mm	INSIDE DIAMETER mm	MINIMUM BEND RADIUS mm	REEL LENGTH m
LSP16	17.8	11.6	35	10, 25, 50
LSP16	17.8	11.6	35	10, 25, 50
LSP20	21.0	14.6	40	10, 25, 50
LSP25	27.3	20.4	50	10, 25, 50
LSP32	34.0	26.7	65	10, 25

Fittings

TYPE A IP67
STRAIGHT SWIVEL FITTING – FIXED THREAD
For insertion into threaded entries & knockouts



METRIC THREAD	PART NUMBER
M16	LSP16/M16/A
M20	LSP16/M20/A
M20	LSP20/M20/A
M25	LSP25/M25/A
M32	LSP32/M32/A

Accessories

TYPE 90 IP67
90° ELBOW – FIXED INTERNAL & FIXED EXTERNAL THREAD
Nickel plated brass



METRIC THREAD	PART NUMBER
M16	B/M16/90
M20	B/M20/90
M20	B/M20/90
M25	B/M25/90
M32	B/M32/90

TYPE 45 IP67
45° ELBOW – FIXED INTERNAL & FIXED EXTERNAL THREAD
Nickel plated brass



METRIC THREAD	PART NUMBER
M16*	B/M16/45
M20	B/M20/45
M20	B/M20/45
M25	B/M25/45
M32	B/M32/45

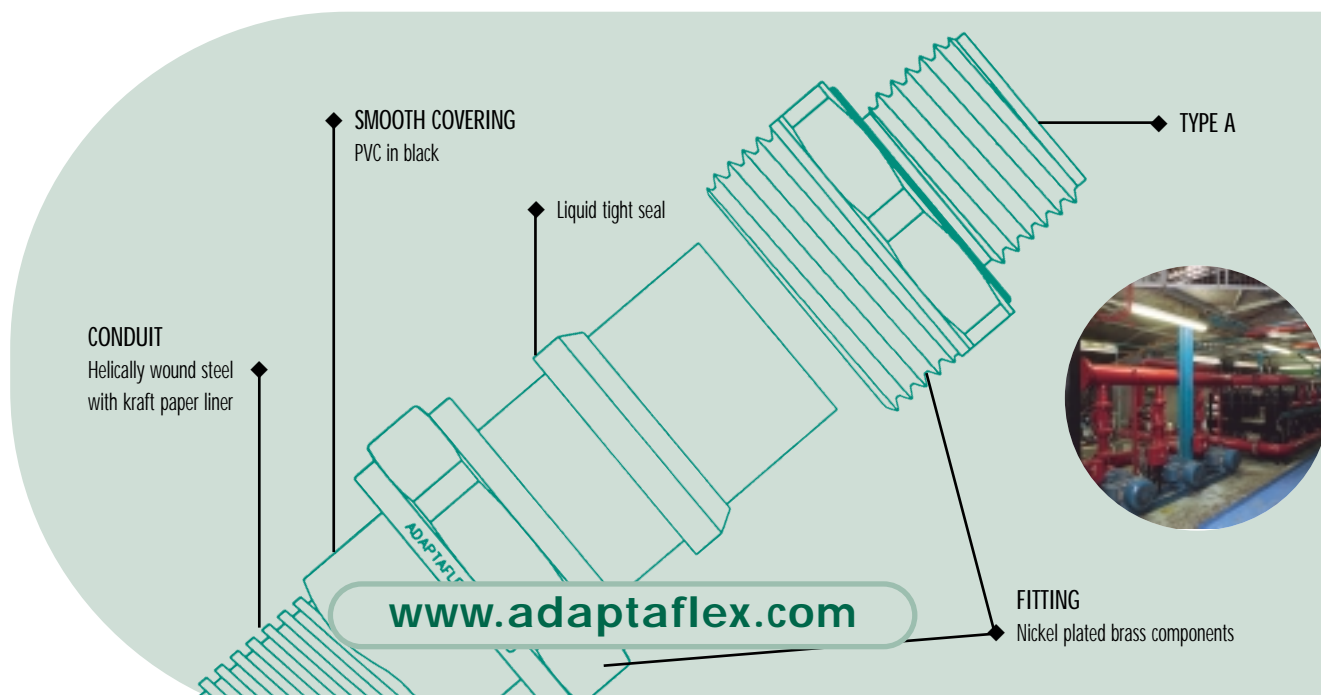
* Incorporates M20 internal thread.

To order complete Part No, add reel length - e.g. LSP20/10M

- See pages 38 - 45 for Technical details
- See pages 34 - 37 for Cutting Tools and Accessories
- See page 25 for P-Clip Conduit Support
- Minimum bend radius is minimum inside bend radius in static mode

Pliable system Type LSP is widely used in conjunction with rigid conduit and trunking to provide wiring in general purpose, static applications, e.g. pumps, motors or workshop equipment, where a degree of mechanical and good ingress protection is required.

STAYFLEX[®]
SYSTEM
FROM ADAPTAFLEX



www.adaptaflex.com



conduit cutting tools

**KWIKCUT
CUT-VICE
SWINGCUT
ROTOCUT**

KWIKCUT

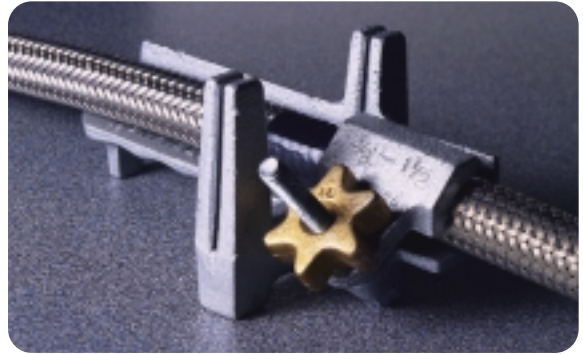


Kwikcut is the ideal cutting tool for non-metallic conduits (PA, PR, PI, PP, KFL, KFS, KFM & XF) up to 32mm.

CUTTING INSTRUCTIONS

Place the conduit between the cutting blade and lower support, squeeze the handles and rotate the conduit for a clean, easy cut. Spare blades are available.

CUT-VICE



Cut-vice offers the ability to produce a clean cut for conduit sizes 16mm to 40mm.

CUTTING INSTRUCTIONS

Place the conduit along the vice body and tighten the clamp. Holding the conduit and integral handle together, insert a hacksaw blade into the guide and cut. For braided conduit, wrap adhesive tape around the cutting point to secure braid. Remove tape after cutting.

ROTOCUT



Rotocut offers a simple but effective method for cutting 20mm and 25mm S, SS, SP, LFH-SP and SN conduit types.

CUTTING INSTRUCTIONS

Adjust the clamping pin so that the conduit is just held in the recess. Squeeze the lever and body whilst rotating the cutting blade. When the blade appears on the inside of the conduit, release the pressure and remove the conduit. A simple twist will then separate the two parts. Where the conduit is covered, the covering can be cut prior to separation. Spare blades are available.

SWINGCUT



Swingcut is a versatile vice and saw combination tool which facilitates a neat, square cut for liquid tight and pliable conduits between 10mm and 32mm. Six to one leverage advantage provides a strong cutting action.

CUTTING INSTRUCTIONS

Place the conduit in the vice and secure. Move the operating handle backwards and forwards whilst applying increasing pressure to the supporting handle. Hardened captive spring loaded retaining pins make blade replacement easy. Spare blades are available.

NEW

Optimum performance of flexible conduit systems is only achieved when correctly assembled and installed.

Assembly of all Adaptaflex's conduit and fittings is now covered in a new cutting instructions booklet, which covers the correct cutting of conduit and how to assemble and attach the fittings.

By following the easy steps you are assured of correct installation and peak operating performance.

The booklet also provides useful tips, gained from actual installation experiences, which just might save you time in the future, when next installing Adaptaflex flexible conduit systems.

Ask for your copy today.



cutting & assembly guide

Adaptaflex
Flexible Conduit Systems

NON-METALLIC SYSTEMS

METALLIC SYSTEMS

Contents

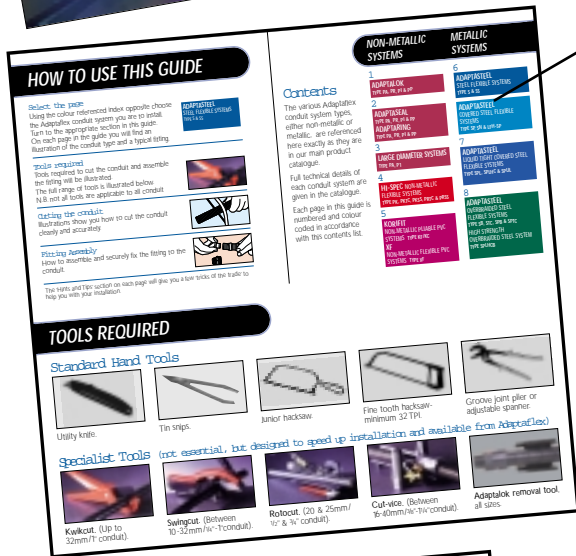
The various Adaptaflex conduit system types, either non-metallic or metallic, are referenced here exactly as they are in our main product catalogue.

Full technical details of each conduit system are given in the catalogue.

Each page in this guide is numbered and colour coded in accordance with the product list.

- 1 **ADAPTALOK**
TYPE PA, PR, PI & PP
- 2 **ADAPTA SEAL**
TYPE PA, PR, PI & PP
ADAPTARING
TYPE PA, PR, PI & PP
- 3 **LARGE DIAMETER SYSTEMS**
TYPE PA, P1
- 4 **HI-SPEC NON-METALLIC FLEXIBLE SYSTEMS**
TYPE PK, PKTC, PKSS, PRTC & PRSS
- 5 **KORIFIT**
NON-METALLIC FLEXIBLE SYSTEMS

- 6 **ADAPTASTEEL**
STEEL FLEXIBLE SYSTEMS
TYPE S & SS
- 7 **ADAPTASTEEL**
COVERED STEEL FLEXIBLE SYSTEMS
TYPE SP, SN & LFH-SP
- 8 **ADAPTASTEEL**
LIQUID TIGHT COVERED STEEL FLEXIBLE SYSTEMS
TYPE SPL, SPLHC & SPUL

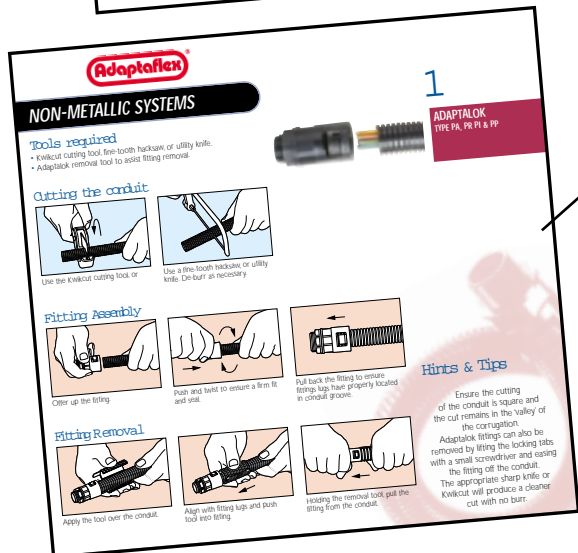
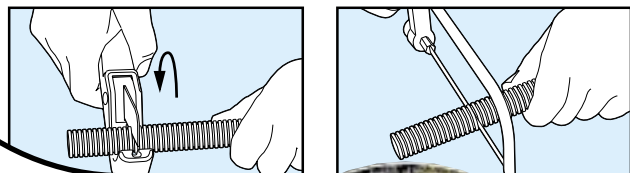


NON-METALLIC SYSTEMS

Tools required

- Kwikcut cutting tool, fine-tooth hacksaw, or utility knife.
- Adaptalok removal tool to assist fitting removal.

Cutting the conduit



Also available on Adaptaflex's CD rom is video footage covering usage of the cutting tools described above.

Both the new instruction booklet and CD ROM are available by calling the Adaptaflex infoline.



metallic accessories

LOCKNUTS
P-CLIPS
90° & 45° ELBOWS
PROXIMITY SWITCH ADAPTORS
FEMALE COUPLERS

METALLIC LOCKNUTS

TYPE P

P-CLIP CONDUIT SUPPORT
 Plated steel construction with PVC insert

90° & 45° BRASS ELBOWS



THREAD	NICKEL PLATED BRASS	GALVANISED STEEL	NOMINAL CONDUIT SIZE mm	PART NUMBER	METRIC INTERNAL THREAD	PG EXTERNAL THREAD	MPT EXTERNAL THREAD	METRIC EXTERNAL THREAD	90° ELBOW* PART NUMBER	90° ELBOW* PART NUMBER	45° ELBOW* PART NUMBER	45° ELBOW* PART NUMBER
M12	LNB/M12	-	10	P CLIP/10	M16	PG9	-	-	-	B/PG9/90	-	-
M16	LNB/M16	LNS/M16	12	P CLIP/12	M16	PG11	-	-	-	B/PG11/90	-	B/PG11/45
M20	LNB/M20	LNS/M20	16	P CLIP/16	M20	PG13.5	-	-	-	B/PG13/90	-	B/PG13/45
M25	LNB/M25	LNS/M25	16	P CLIP/16	M20	PG16	-	-	-	B/PG16/90	-	B/PG16/45
M32	LNB/M32	LNS/M32	20	P CLIP/20	M25	PG21	-	-	-	B/PG21/90	-	B/PG21/45
M40	LNB/M40	-	25	P CLIP/25	M20	-	1/2"	-	-	B/050/90	-	B/050/45
M50	LNB/M50	-	32	P CLIP/32	M25	-	3/4"	-	-	B/075/90	-	B/075/45
M63	LNB/M63	-	40	P CLIP/40	M32	-	1"	-	-	B/100/90	-	B/100/45
M75	LNB/M75	-	50	P CLIP/50	-	-	-	-	-	-	-	-
PG7	LNB/PG7	-	63	P CLIP/63	M16	-	-	M16	B/M16/90	-	-	-
PG9	LNB/PG9	-	75	P CLIP/75	M20	-	-	M16	-	-	B/M16/45	-
PG11	LNB/PG11	-	-	-	M20	-	-	M20	B/M20/90	-	B/M20/45	-
PG13.5	LNB/PG13	-	-	-	M25	-	-	M25	B/M25/90	-	B/M25/45	-
PG16	LNB/PG16	-	-	-	M32	-	-	M32	B/M32/90	-	B/M32/45	-
PG21	LNB/PG21	-	-	-	-	-	-	-	-	-	-	-
PG29	LNB/PG29	-	-	-	-	-	-	-	-	-	-	-
PG36	LNB/PG36	-	-	-	-	-	-	-	-	-	-	-
PG42	LNB/PG42	-	-	-	-	-	-	-	-	-	-	-
PG48	LNB/PG48	-	-	-	-	-	-	-	-	-	-	-

NICKEL PLATED BRASS PROXIMITY SWITCH CONNECTORS & UNEF THREAD CONVERTERS WITH TWO INTERNAL THREADS

(other sizes can be made to order, phone the Adaptaflex Infoline)

INTERNAL THREAD	TO INTERNAL THREAD					
	M16	M20	M25	M32	PG9	PG21
M12	PSA16/M12	-	-	-	PSA9/M12	-
M18	PSA16/M18	-	-	-	PSA9/M18	-
M30	PSA16/M30	-	-	-	PSA9/M30	-
5/8"UNEF	B/063U-M16/TC	-	-	-	-	-
3/4"UNEF	B/075U-M16/TC	B/075U-M20/TC	-	-	-	-
7/8"UNEF	-	B/088U-M20/TC	-	-	-	-
1"UNEF	-	B/100U-M20/TC	B/100U-M25/TC	-	-	-
1 1/8"UNEF	-	B/119U-M20/TC	B/119U-M25/TC	-	-	-
1 1/4"UNEF	-	B/131U-M20/TC	-	-	-	-
1 3/8"UNEF	-	-	B/144U-M25/TC	B/144U-M32/TC	-	B/144U-PG21/TC

BRASS FEMALE COUPLERS

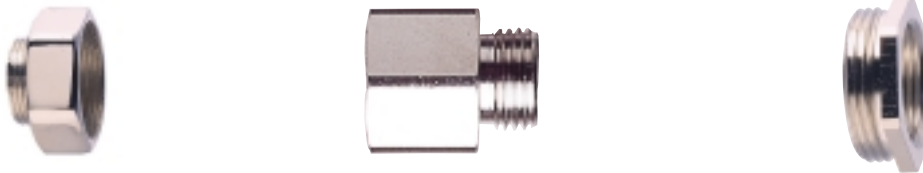


THREAD	PART NUMBER
M16	B/M16/C
M20	B/M20/C
M25	B/M25/C
M32	B/M32/C
-	-
-	-
-	-
-	-
-	-
-	-

Infoline: 01675 468202

NICKEL PLATED BRASS ENLARGERS, REDUCERS & CONVERTERS WITH ONE EXTERNAL & ONE INTERNAL THREAD

(other sizes can be made to order, phone the Adaptaflex Infoline)



EXTERNAL THREAD	TO INTERNAL THREAD						
	M12	M16	M20	M25	M32	M40	1/2" NPT
M16	B/M16-M12/R	-	B/M16-M20/E	-	-	-	-
M20	B/M20-M12/R	B/M20-M16/R	-	B/M20-M25/E	-	-	B/M20-050/TC
M25	-	-	B/M25-M20/R	-	B/M25-M32/E	-	-
M32	-	-	-	B/M32-M25/R	-	-	-
M40	-	-	-	-	B/M40-M32/R	-	-
M50	-	-	-	-	-	B/M50-M40/R	-
PG7	-	B/PG7-M16/TC	B/PG7-M20/TC	-	-	-	-
PG9	-	B/PG9-M16/TC	B/PG9-M20/TC	-	-	-	-
PG11	-	B/PG11-M16/TC	B/PG11-M20/TC	-	-	-	B/PG11-050/TC
PG13.5	-	B/PG13-M16/TC	B/PG13-M20/TC	-	-	-	-
PG16	-	B/PG16-M16/TC	B/PG16-M20/TC	B/PG16-M25/TC	-	-	B/PG16-050/TC
PG21	-	B/PG21-M16/TC	B/PG21-M20/TC	B/PG21-M25/TC	B/PG21-M32/TC	-	-
PG29	-	-	B/PG29-M20/TC	B/PG29-M25/TC	B/PG29-M32/TC	B/PG29-M40/TC	-
PG36	-	-	-	-	B/PG36-M32/TC	B/PG36-M40/TC	-
PG42	-	-	-	-	-	-	-
PG48	-	-	-	-	-	-	-
1/2" NPT	-	B/050-M16/TC	B/050-M20/TC	-	-	-	-

EXTERNAL THREAD	TO INTERNAL THREAD									
	PG7	PG9	PG11	PG13.5	PG16	PG21	PG29	PG36	PG42	PG48
M16	B/M16-PG7/TC	B/M16-PG9/TC	B/M16-PG11/TC	-	-	-	-	-	-	-
M20	B/M20-PG7/TC	B/M20-PG9/TC	B/M20-PG11/TC	B/M20-PG13/TC	B/M20-PG16/TC	B/M20-PG21/TC	-	-	-	-
M25	-	-	-	-	-	B/M25-PG21/TC	-	-	-	-
M32	-	-	-	-	-	-	B/M32-PG29/TC	-	-	-
M40	-	-	-	-	-	-	-	-	-	-
M50	-	-	-	-	-	-	-	-	-	-
PG7	-	B/PG7-PG9/E	-	-	-	-	-	-	-	-
PG9	B/PG9-PG7/R	-	B/PG9-PG11/E	B/PG9-PG13/E	-	-	-	-	-	-
PG11	B/PG11-PG7/R	B/PG11-PG9/R	-	B/PG11-PG13/E	B/PG11-PG16/E	-	-	-	-	-
PG13.5	B/PG13-PG7/R	B/PG13-PG9/R	B/PG13-PG11/R	-	B/PG13-PG16/E	B/PG13-PG21/E	-	-	-	-
PG16	B/PG16-PG7/R	B/PG16-PG9/R	B/PG16-PG11/R	B/PG16-PG13/R	-	B/PG16-PG21/E	-	-	-	-
PG21	-	-	B/PG21-PG11/R	B/PG21-PG13/R	B/PG21-PG16/R	-	B/PG21-PG29/E	-	-	-
PG29	-	-	-	-	B/PG29-PG16/R	B/PG29-PG21/R	-	B/PG29-PG36/E	-	-
PG36	-	-	-	-	-	B/PG36-PG21/R	B/PG36-PG29/R	-	B/PG36-PG42/E	B/PG36-PG48/E
PG42	-	-	-	-	-	-	B/PG42-PG29/R	B/PG42-PG36/R	-	B/PG42-PG48/E
PG48	-	-	-	-	-	-	-	B/PG48-PG36/R	B/PG48-PG42/R	-
1/2" NPT	-	-	-	-	-	-	-	-	-	-

The following pages enable you to select Adaptaflex products which best fit the purpose intended and are designed to help meet your product liability obligations over the lifetime of the installation.

To select the most appropriate Adaptaflex system for any given application match the performance criteria required to the relevant tables on the following pages.

Performance criteria used in this table are:

Bending to EN50086

Flexible and pliable conduits can be bent by hand. Flexible systems may flex frequently throughout their life and are suitable for both static and dynamic applications. Pliable systems are intended only for static applications.

Flexibility

Dependent on ease of bending and minimum bend radius without failure.

Fatigue Life

The recommended maximum number of flexing cycles to avoid failure, dependent on temperature, bend radius and frequency of movement.

Torsional Capability

Degree of resistance to conduit damage caused by twisting.

Minimum Dynamic Bend Radius @ Minimum Temperature

The recommended minimum inside bend radius at the minimum temperature to EN50086. Fatigue life in dynamic flexing applications is dependent upon bend radius, frequency of bending, temperature and the chemical environment.

Minimum Temperature to EN50086

The minimum operating temperature defined by the bending classification.

Minimum Static Temperature

The recommended minimum operating temperature in static mode.

Maximum Temperature to EN50086

The maximum operating temperature defined by the bending classification.

Maximum Long Term Temperature

The recommended maximum operating temperature in static mode.

Ultimate Compression Strength

Final resistance to deformation under compressive load.

Ultimate Tensile Strength

A combination of final conduit tensile and fitting pull-off resistance.

Abrasion Resistance

An indication of resistance to rubbing against other materials.

UV Resistance

An indication of suitability for external application dependent on resistance to degradation caused by exposure to UV ie. sunlight.

Non-Flame Propagating to EN50086

Self-extinguishing within a given time once a fire source is removed.

Halogen Free

Giving off < 0.1% Halogen acid gas when burnt.

Fire Performance (see key on page 39)

Systems combining various levels of high flame retardancy, low smoke density and toxicity in the event of fire are classified as Low Fire Hazard (LFH), Enhanced Low Fire Hazard (ELFH), Inherent Low Fire Hazard (ILFH) or Super Low Fire Hazard (SLFH).

EMI Screen @ 1MHz

(see **SCREEN SYSTEMS** on page 45)

SCREEN SYSTEMS are classified as EMI Screen, Enhanced EMI Screen or High EMI Screen dependent on capability to reduce electromagnetic interference (EMI) in the frequency range 0.1MHz to 1000 MHz.

System IP Rating to EN50086

(see definitions on page 43)

The resistance of an assembled system to the ingress of solids and liquids, dependent on the combination of conduit and fittings.

The point of entry into adjoining equipment may require independent sealing to maintain the system IP rating, see sealing washers on page 23.

CONDUITS

NON-METALLIC SYSTEMS

PAGE NUMBER	CONDUIT TYPE	NOMINAL SIZE RANGE mm		COLOUR/FINISH (SEE KEY BELOW)	
		MIN	MAX		
ADAPTALOK ADAPTASEAL ADAPTARING FLEXIBLE SYSTEMS	CONDUIT 4-5	PA LIGHT	13	54	B/G
		PA STANDARD	10	106	B/G
		PA HEAVY	13	54	B/G
FITTINGS 6-17		PR	13	54	B/G
		PI	10	106	B/G
		PIH	13	54	B
		PP	13	34	B

HI-SPEC FLEXIBLE SYSTEMS	18-19	PK	13	34	B
		PKTC	13	34	S
		PKSS	13	34	S
		PRTC	16	54	S
		PRSS	16	54	S

KORIFIT PVC PLIABLE SYSTEM & XTRAFLEX FLEXIBLE SYSTEM	20-21	KFL	16	50	G
		KFS	16	25	W
		KFM	12	50	B
	22	XF	12	50	B

METALLIC SYSTEMS

ADAPTASTEEL STEEL FLEXIBLE SYSTEMS	24-25	S	10	75	S
		SS	12	32	S

ADAPTASTEEL COVERED STEEL FLEXIBLE SYSTEMS	26-27	SP	10	75	B/G/O
		SN	12	32	B
		LFH-SP	16	50	B

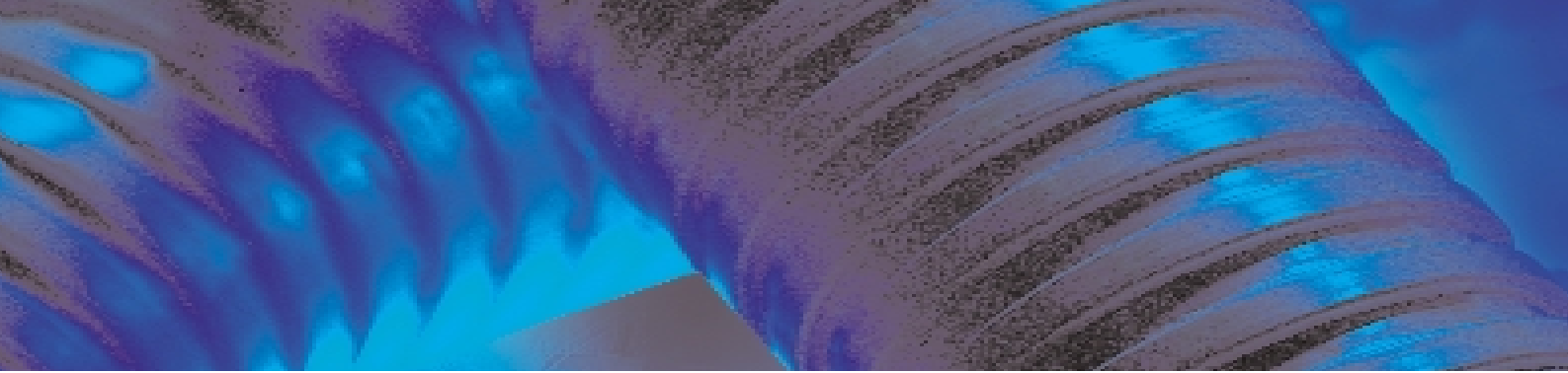
ADAPTASTEEL LIQUID TIGHT COVERED STEEL FLEXIBLE SYSTEMS	28-29	SPL	10	63	B/G/O
		SPLHC	16	63	B
		SPUL	16	63	G

ADAPTASTEEL OVERBRAIDED FLEXIBLE SYSTEMS	30	SB	10	50	S
		STC	10	50	S
	31	SPB	10	50	S
		SPTC	10	50	S
		SPLHCB	16	50	S

STAYFLEX PLIABLE SYSTEM	33	LSP	16	32	B
----------------------------	----	-----	----	----	---

COLOUR KEY

B = BLACK
G = GREY
N = NICKEL PLATE
O = ORANGE
S = SELF
W = WHITE



BENDING TO ENS0086	FLEXIBILITY	FATIGUE LIFE	TORSIONAL CAPABILITY	MIN DYNAMIC BEND RADIUS mm @ MIN TEMP	TEMPERATURE RANGE (°C)			MAX LONG TERM	ULTIMATE COMPRESSION STRENGTH (N/50mm)	ULTIMATE TENSILE STRENGTH (N)	ABRASION RESISTANCE	UV RESISTANCE	NON-FLAME PROPAGATING TO ENS0086	HALOGEN FREE	FIRE PERFORMANCE (SEE KEY BELOW)	EMI SCREEN @ 1MHz(dB) (see page 45)
					MIN TO ENS0086	MIN STATIC	MAX TO ENS0086									
F	VH	H	†	80	-5	-40	120	120	320	150	M	VH*	✓	✓	-	-
F	H	H	†	80	-5	-40	120	120	350	200	H	VH*	✓	✓	LFH	-
F	M	M	†	-	-5	-40	120	120	600	350	H	VH*	✓	✓	LFH	-
F	H	H	†	80	-5	-40	120	120	350	250	H	VH*	✓	✓	ELFH	-
F	VH	VH	†	80	-45	-50	120	90	250	200	M	VH*	✓	✓	-	-
F	VH	VH	†	100	-45	-50	120	110	300	220	M	VH*	✓	✓	-	-
F	VH	VH	†	-	-5	-20	105	90	100	100	M	M*	-	✓	-	-
F	VH	H	-	-	-45	-60	260	260	600	300	VH	VH	✓	✓	SLFH	-
F	VH	H	-	-	-45	-60	260	260	600	1200*	H	VH	✓	✓	SLFH	98
F	VH	H	-	-	-45	-60	260	260	600	1500	VH	VH	✓	✓	SLFH	61
F	M	H	-	80	-5	-40	120	120	350	1200*	H	VH	✓	✓	ELFH	98
F	M	H	-	80	-5	-40	120	120	350	1500*	VH	VH	✓	✓	ELFH	61
P	M	L	-	-	-5	-5	60	60	400	150	M	H	✓	-	-	-
P	M	L	-	-	-5	-5	60	60	750	250	M	H	✓	-	-	-
P	M	L	-	-	-5	-5	60	60	800	300	M	H	✓	-	-	-
P	VH	M	✓	-	-5	-5	60	60	450	150	M	M	✓	-	-	-
F	H	H	-	40	-45	-50	250	300	1500	1000	M	VH	✓	✓	ILFH	-
F	H	H	-	40	-45	-50	250	350	2550	1700	H	VH	✓	✓	ILFH	-
F	H	M	-	40	-5	-15	90	70*	1500	1000	M	VH	✓	-	-	-
F	M	M	-	50	-25	-40	150	120	1500	1000	H	H	✓	✓	-	-
F	M	M	-	50	-5	-25	105	90	1500	1000	M	H	✓	✓	ELFH	-
F	M	M	-	160	-5	-20	105	105*	2500	1600	M	VH	✓	-	-	-
F	M	H	-	60	-45	-65	150	135*	2500	1600	M	H	✓	✓	-	-
F	M	M	-	N/C	-5	-15	105	75*	2500	1600	M	VH	✓	-	-	-
F	H	H	-	40	-45	-50	250	300	1500	1000	H	VH	✓	✓	ILFH	74
F	H	H	-	40	-45	-50	250	300	1500	1000	H	VH	✓	✓	ILFH	103
F	H	M	-	40	-5	-15	90	70*	1500	1000	H	VH	✓	-	-	74
F	H	M	-	40	-5	-15	90	70*	1500	1000	H	VH	✓	-	-	100
F	M	H	-	50	-45	-65	150	135*	2500	3500*	H	VH	✓	✓	-	72
P	M	L	-	90	-5	-15	90	70	1050	150	M	H	✓	-	-	-

F = FLEXIBLE
P = PLIABLE

†WITH ADAPTING FITTINGS

*HIGHER SHORT-TERM MAX TEMP POSSIBLE

*HIGH SUSPENDED LOAD CAPABILITY

*BLACK ONLY

PERFORMANCE LEVEL KEY

L = LOW
M = MEDIUM
H = HIGH
VH = VERY HIGH

FITTINGS

SYSTEM IP RATING TO ENS0086	WHEN USED WITH FITTING RANGE	TYPE	COLOUR/FINISH (SEE KEY BELOW)
66	=	AL	A/C90/FL90+FLC90/45/Y B/G
66	=	AL	PPA B
66	=	AL	SA/SFA/SC90/S45/SF45 B/G+N
66	=	AL	UNEF Connectors B
66, 67	=	AS	A/C90/FL90/T B/G
40	=	AR	A/C90/FL90/T B/G
65	=	ADC	FLA/FL90/CP90 B/G
66, 68	=	AS	A/C90 with SWM B/G
66, 67	=	PK	PK N
66, 67	=	PB	B N
40	=	KC	A/C90 B/G/W
65	=	KF	A/2020 W
65	=	XF	A/C90 B
40	=	S	A/B/F N
40	=	S	C N
54	=	SP	A/B/F N
65	=	SP	M N
00	=	SP	E N
67	=	SPL	A/B N
66, 67, 68	=	SPL	M N
00	=	SPL	E N
40	=	SB	A/B N
54	=	SPB	A/B N
66, 67, 68	=	SPLB	A/B N
67	=	LSP	A N

FIRE PERFORMANCE CLASSIFICATION KEY

PROPERTY	LFH	ELFH	SLFH	ILFH
OXYGEN INDEX ISO4589	31% ≥ OI ≥ 28%	OI ≥ 35%	OI ≥ 35%	Low Fire Hazard i.e. Types S, SS & SB conduit and fittings
BS6853 SMOKE DENSITY 3m ²	0.02 ≥ A _s ≥ 0.03	0.005 ≥ A _s ≥ 0.02	A _s ≤ 0.005	
ZERO HALOGEN	✓	✓	✓	
ZERO PHOSPHORUS	✓	✓	✓	
ZERO SULPHUR	✓	✓	✓	
LONDON UNDERGROUND	CONCESSION	APPROVED	APPROVED	
TOXICITY INDEX NES713 ISSUE 3	5.0 ≥ TI ≥ 6.0	0.5 ≥ TI ≥ 5.0	TI ≤ 0.5	
NFF16-102	I3F2	I2F2	I2F1	

conduit & fitting materials

This chart is designed to assist product selection by detailing the material types of the main components which make up a particular conduit system, i.e. conduit, covering, overbraid, fitting body & thread.

The full names for the abbreviated material types can be found on the next page in the materials key.

		CONDUIT MATERIALS				FITTING MATERIALS				
	PAGE NUMBER	CONDUIT TYPE	CONDUIT	COVERING	OVERBRAID	FITTING RANGE	FITTING TYPE	BODY	THREAD	
NON-METALLIC SYSTEMS ADAPTALOK ADAPTASEAL ADAPTARING FLEXIBLE SYSTEMS	CONDUIT 4-5	PA LIGHT	PA6	-	-	AL	A/C90/FL90/45/Y	PA66	PA66	
		PA STANDARD	PA6	-	-	AL	PPA	PP	PP	
		PA HEAVY	PA6	-	-	AL	SA/SFA/SC90/SFC90/S45/SF45	PA66+N+EPDM	NPB	
	FITTINGS 6-17	PR	PA6	-	-	AL	UNEF Connectors	PA66+N+EPDM	AA	
		PI	PA11	-	-	AS	A/C90/FLC90/T	CR+PA66+N+EPDM		
		PIH	PA11	-	-	AR	A/C90/FL/FLC90/T	A+PA66	PA66	
		PP	PP	-	-	ADC	FLA/FL90/CP90	PA66	PA66	
HI-SPEC FLEXIBLE SYSTEMS	18-19	PK	PK	-	-	PK	PK	NPB	NPB	
		PKTC	PK	-	TC	PB	B	SC+NPB	NPB	
		PKSS	PK	-	SS316					
		PRTC	PA6	-	TC					
		PRSS	PA6	-	SS316					
KORIFIT PVC PLIABLE SYSTEM & XTRAFLEX FLEXIBLE SYSTEM	20-21	KFL	PVCU	-	-	KC	A/C90	A+PA66	PA66	
		KFS	PVCU	-	-	KF	A/2020	PA66	PA66	
		KFM	PVCU	-	-	XF	A/C90	CR+PA66+N+EPDM	PA66	
	XF	PVCU+PVC	-	-						
METALLIC SYSTEMS	ADAPTASTEEL STEEL FLEXIBLE SYSTEMS	24-25	S	S	-	-	S	A/B/F C	NPB NPB	NPB -
			SS	SS316	-	-				
	ADAPTASTEEL COVERED STEEL FLEXIBLE SYSTEMS	26-27	SP	S	PVC	-	SP	A/B/F M C/E	NPB A+NPB+N+EPDM NPB	NPB NPB/PA6 -
			SN	S	TPE	-				
			LFH-SP	S	PO	-				
	ADAPTASTEEL LIQUID TIGHT COVERED STEEL FLEXIBLE SYSTEMS	28-29	SPL	S	PVCOR	-	SPL	A/B M E	PA6+NPB+N+EPDM A+NPB+N+EPDM NPB	NPB/PA6 NPB/PA6 -
			SPLHC	S	TPR	-				
			SPUL	S	PVCOR	-				
	ADAPTASTEEL OVERBRAIDED FLEXIBLE SYSTEMS	30	SB	S	-	S	SB	A/B	NPB	NPB
			STC	S	-	TC				
		31	SPB	S	PVC	S	SPB	A/B	NPB	NPB
			SPTC	S	PVC	TC				
32	SPLHCB	S	TPR	SS316	SPLB	A/B	PA6+NPB+N+EPDM	NPB/PA6		
STAYFLEX PLIABLE SYSTEM	33	LSP	LS*	PVC	-	LSP	A	NPB	NPB	

*Includes Kraftpaper liner

To assess the chemical resistance of an assembled system:

- from the Materials Key, compare the material of the conduit & fittings selected, against the main chemical of concern in this chart.
- the least suitable material determines the overall chemical resistance of the system. Phone the Adaptaflex Infoline for other chemicals, concentrations and temperatures.

MATERIALS KEY

=	Acetal (POM)
=	Anodised aluminium
=	Brass
=	Copper
=	Chloroprene rubber
=	EPDM
=	Lead steel
=	Nitrile (NBR)
=	Nickel plated brass
=	Polyamide (nylon) 6
=	Polyamide (nylon) 11
=	Polyamide (nylon) 66
=	Polyketone
=	Polyolefin
=	Polypropylene
=	Polyurethane
=	PVC
=	Oil resistant PVC
=	Unplasticised PVC
=	Galvanised steel
=	Silicone (O)
=	Stainless steel grade 316
=	Tinned copper
=	Thermoplastic elastomer
=	Thermoplastic rubber

SUITABILITY KEY

- S = SUITABLE
- L = LIMITED SUITABILITY
- U = UNSUITABLE
- A = CONTACT ADAPTAFLX INFOLINE

	A	AA	B	C	CR	E	LS	N	NPB	PA6	PA12	PA66	PK	PO	PP	PU	PVC	PVCOR	PVCU	S	SC	SS316	TC	TPE	TPR
ASTM NO.1	S	S	S	S	S	U	S	S	S	S	S	S	S	S	L	S	S	U	S	S	S	S	S	S	S
ASTM NO.2	S	S	S	S	L	U	S	S	S	S	S	S	S	S	L	S	S	U	S	S	S	S	S	S	L
ASTM NO.3	S	S	S	S	U	U	S	L	S	S	S	S	S	L	L	S	U	S	S	S	L	S	S	S	L
ACETIC ACID (10%)	S	S	U	L	S	S	U	S	S	L	L	L	S	S	S	L	L	S	U	S	S	S	L	S	S
ACETONE	L	S	S	S	L	S	U	S	U	S	S	S	S	S	S	L	U	U	U	U	S	L	S	S	U
ALUMINIUM CHLORIDE	L	S	U	L	S	S	U	S	A	L	S	L	S	S	S	S	L	S	S	U	L	L	L	L	S
ANILINE	S	S	S	S	L	S	S	U	S	L	U	L	L	L	S	U	U	U	U	S	S	S	S	L	S
BENZALDEHYDE	S	S	S	S	U	S	S	U	S	L	L	L	S	U	L	L	U	U	U	S	L	S	S	L	L
BENZENE	S	S	S	S	U	U	S	U	S	S	S	S	S	U	L	L	U	U	U	S	L	S	S	S	U
CARBON TETRACHLORIDE	S	S	S	S	U	U	S	U	S	S	S	S	S	S	U	L	L	L	L	S	U	S	S	S	U
CHLORINE WATER	U	L	U	U	L	L	U	U	S	U	U	U	U	L	L	U	U	U	L	U	L	U	U	U	S
CHLOROFORM	L	S	S	S	U	U	S	U	U	U	L	S	U	L	L	U	U	U	S	U	S	S	S	U	L
CITRIC ACID	S	S	S	S	S	S	S	S	S	S	S	S	S	S	S	S	S	S	S	S	S	S	S	S	S
COPPER SULPHATE	S	S	S	S	S	S	S	S	L	S	L	S	S	S	S	S	S	S	S	S	S	S	S	S	S
CRESOL	U	S	L	L	L	U	S	U	S	U	U	U	L	U	S	U	L	L	L	S	U	S	L	L	S
DIESEL OIL	S	S	S	S	L	U	S	S	S	S	S	S	S	L	S	S	L	S	S	S	U	S	S	S	S
DIETHYLAMINE	U	S	S	S	U	U	S	U	S	S	L	S	S	S	S	U	L	L	L	S	L	S	S	L	S
ETHANOL	S	S	S	S	S	S	S	S	S	L	S	L	S	L	S	L	U	U	S	S	S	S	S	L	S
ETHER	S	S	S	S	L	U	S	U	S	S	S	S	S	U	S	S	L	L	S	S	U	S	S	L	S
ETHYLAMINE	L	S	S	S	U	S	S	S	S	L	S	S	L	S	U	L	L	L	L	S	U	S	S	L	L
ETHYLENE GLYCOL	S	S	S	S	S	U	S	S	S	S	S	S	S	S	S	S	L	L	S	U	S	S	S	L	S
ETHYL ETHANOATE	S	S	S	S	U	S	S	S	L	S	L	S	L	S	U	U	U	U	S	L	S	S	S	U	S
FREON 32	S	S	S	S	S	S	U	S	S	S	S	S	S	U	S	L	L	L	L	U	U	S	S	U	U
HYDROCHLORIC ACID (10%)	L	L	U	U	S	S	U	S	U	L	U	U	U	S	L	S	S	S	U	L	U	U	U	U	S
HYDROCHLORIC ACID (36%)	U	L	U	U	S	L	U	S	U	U	U	U	U	U	S	U	L	S	S	U	L	U	U	U	S
HYDROGEN PEROXIDE (35%)	U	S	U	S	S	U	S	S	L	L	L	L	S	L	S	U	S	S	S	U	S	S	S	L	L
HYDROGEN PEROXIDE (87%)	U	S	U	L	U	A	U	S	S	U	U	U	S	U	L	U	S	S	S	U	L	S	L	U	U
LACTIC ACID	U	L	L	S	S	U	S	L	S	L	S	L	S	S	S	L	L	L	L	U	L	S	S	L	S
LUBRICATING OIL	S	S	S	S	U	S	S	S	S	S	S	S	S	S	L	S	L	S	L	S	S	U	S	S	S
METHANOL	S	S	S	S	S	S	S	S	L	L	L	L	S	L	S	L	U	U	S	S	S	S	S	L	S
METHYL BROMIDE	U	S	S	S	U	U	S	S	U	U	U	S	U	L	U	U	U	U	S	U	S	S	U	L	S
MEK	S	S	S	S	U	S	S	S	S	S	S	S	S	U	S	L	U	U	U	S	U	S	U	S	U
NITRIC ACID (10%)	L	L	U	U	L	S	U	S	U	U	U	U	U	S	S	U	S	S	S	U	L	U	U	U	S
NITRIC ACID (70%)	U	L	U	U	U	U	S	U	U	U	U	U	U	U	S	S	S	S	S	U	U	U	U	U	S
OXALIC ACID	L	S	U	L	S	S	U	S	L	S	L	S	S	S	L	L	S	S	U	L	S	L	S	S	S
OZONE (GAS)	U	S	S	S	L	S	U	S	U	U	U	S	S	L	S	L	L	L	S	S	U	S	S	L	S
PARAFFIN OIL	S	S	S	S	L	U	S	S	S	S	S	S	S	S	L	S	L	S	S	S	S	S	S	S	S
PETROL	S	S	S	S	U	U	S	S	S	S	S	S	S	U	S	S	U	S	S	S	U	S	S	S	S
PHENOL	U	S	L	L	L	S	S	S	U	U	U	L	U	S	L	L	L	L	S	S	S	L	L	S	S
SEA WATER	S	S	L	S	S	U	S	L	S	S	S	S	S	S	S	S	S	S	S	U	S	S	S	S	S
SILVER NITRATE	S	S	U	S	S	U	S	S	S	S	S	S	S	S	S	S	S	S	S	S	S	S	S	S	S
SKYDROL	S	S	S	S	L	L	S	S	S	S	S	S	S	U	S	L	U	U	U	S	L	S	S	L	S
SODIUM CHLORIDE	S	S	U	S	S	S	U	S	L	S	S	S	S	S	S	S	S	S	S	U	S	S	S	S	S
SODIUM HYDROXIDE (10%)	S	U	U	S	S	U	S	S	S	S	S	S	S	S	S	S	S	S	S	U	S	S	S	S	S
SODIUM HYDROXIDE (60%)	S	U	U	S	S	U	S	S	S	L	S	S	S	S	L	L	S	S	S	U	S	L	S	L	S
SULPHUR DIOXIDE (GAS)	U	L	U	L	L	S	U	L	U	U	U	S	L	S	U	S	S	S	U	S	U	L	L	S	S
SULPHURIC ACID (10%)	U	L	U	U	S	S	U	U	U	U	U	L	U	S	S	L	S	S	S	U	L	U	U	L	S
SULPHURIC ACID (70%)	U	L	U	U	L	S	U	U	U	U	U	L	S	U	S	S	S	S	U	U	U	U	U	U	S
TOLUENE	S	S	S	S	U	U	S	S	S	S	S	S	S	L	S	U	U	U	U	U	U	U	U	U	U
TRANSFORMER OIL	S	S	S	S	L	U	S	S	S	S	S	S	S	L	S	S	L	S	S	L	S	S	L	S	L
1,1,1-TRICHLOROETHANE	S	S	S	S	U	U	U	S	S	S	S	S	S	L	L	L	U	U	U	U	U	S	S	U	L
TRICHLOROETHYLENE	L	S	S	S	U	U	U	S	L	U	L	S	L	L	L	U	U	U	U	U	S	S	S	U	U
TURPENTINE	S	S	S	S	U	U	S	S	S	S	S	S	S	U	U	L	L	L	S	S	U	S	S	L	U
VEGETABLE OIL	S	S	S	S	L	S	S	S	S	S	S	S	S	L	S	S	L	S	S	L	S	S	S	S	S
VINYL ACETATE	L	S	S	S	S	U	L	S	L	S	L	S	L	U	S	U	U	U	U	U	U	S	S	U	S
WATER	S	S	S	S	S	U	S	S	S	S	S	S	S	S	S	S	S	S	S	S	S	S	S	S	S
WHITE SPIRIT	S	S	S	S	L	U	S	S	S	S	S	S	S	U	S	L	L	L	S	S	U	S	S	L	L
ZINC CHLORIDE	S	L	U	L	S	S	U	S	S	U	S	U	S	S	S	S	S	S	S	U	S	S	L	L	S

EN50086 classifications

NON METALLIC SYSTEMS		WITH FITTING	1 COMPRESSION	2 IMPACT	3 MIN. TEMP.	4 MAX. TEMP.	5 BENDING	6 ELECTRICAL	7 SOLID INGRESS (IP)	8 LIQUID INGRESS (IP)	9 CORROSION	10 TENSILE	11 NON-FLAME PROPAGATING	12 SUSPENDED LOAD
PA LIGHT	AL	2	4	2	4	4	0	6	6	0	1	1	0	
PA STANDARD	AL	2	4	2	4	4	0	6	6	0	1	1	0	
PA HEAVY	AL	2	4	2	4	4	0	6	6	0	2	1	0	
PR	AL	2	4	2	4	4	0	6	6	0	1	1	0	
PI	AL	1	3	5	4	4	0	6	6	0	1	1	0	
PIH	AL	2	4	5	4	4	0	6	6	0	1	1	0	
PP	AL	2	3	2	3	4	2	6	6	0	1	2	0	

PK	PK	2	4	5	6	4	3	6	7	0	3	1	0
PKTC	PB	2	4	5	6	4	3	6	7	0	3	1	0
PKSS	PB	2	4	5	6	4	3	6	7	0	3	1	0
PRTC	PB	2	4	2	4	4	1	6	7	0	3	1	0
PRSS	PB	2	4	2	4	4	1	6	7	0	3	1	0

KFL	KC	2	2	3	1	2	2	4	0	0	1	1	0
KFS	KC	2	3	3	1	2	2	4	0	0	2	1	0
KFM	KC	3	3	3	1	2	2	4	0	0	1	1	0

METALLIC SYSTEMS

S	S	4	4	5	6	4	0	4	0	1	4	1	5
SS	S	4	4	5	6	4	0	4	0	4	4	1	5

SP	SP(M)	4	4	2	2	4	2	6	5	0	4	1	5
SN	SP(M)	4	4	4	5	4	0	6	5	0	4	1	5
LFH-SP	SP(M)	4	4	2	3	4	0	6	5	0	4	1	5

SPL	SPL(M)	4	4	2	3	4	2	6	7	0	4	1	5
SPLHC	SPL(M)	4	4	5	5	4	0	6	7	0	4	1	5

SB	SB	4	4	5	6	4	1	4	0	1	4	1	0
STC	SB	4	4	5	6	4	1	4	0	1	4	1	0
SPB	SPB	4	4	2	2	4	3	5	4	0	4	1	0
SPTC	SPB	4	4	2	2	4	3	5	4	0	4	1	0
SPLHCB	SPLB	4	4	5	5	4	1	6	7	0	5	1	0

LSP	LSP	3	4	2	2	2	2	6	7	0	1	1	0
-----	-----	---	---	---	---	---	---	---	---	---	---	---	---

Information based on nominal 20mm conduit size

PERFORMANCE CLASSIFICATION KEY

CLASSIFICATION LEVEL	COMPRESSION STRENGTH (N)	IMPACT STRENGTH (J)	MINIMUM TEMPERATURE (°C)	MAXIMUM TEMPERATURE (°C)	BENDING	ELECTRICAL PROPERTIES	IP RATING (SOLID INGRESS)	IP RATING (WATER INGRESS)	CORROSION RESISTANCE	TENSILE STRENGTH (N)	NON-FLAME PROPAGATING	SUSPENDED LOAD CAPACITY (N)
0	-	-	-	-	-	Not declared	-	0	N/A	Not declared	-	Not declared
1	125	0.5	5	60	Rigid	Conductor	-	1	Low	100	✓	20
2	320	1	-5	90	Pliable	Insulator	-	2	Medium	250	✗	30
3	750	2	-15	105	PII/Semi Rigid	Con./Ins	3	3	Med-Hi	500	-	150
4	1250	6	-25	120	Flexible	-	4	4	High	1000	-	450
5	4000	20	-45	150	-	-	5	5	-	2500	-	850
6	-	-	-	250	-	-	6	6	-	-	-	-
7	-	-	-	-	-	-	7	7	-	-	-	-

In 1995/96 the new European standards for flexible and pliable conduit systems (BS EN 50086-2.3 & BS EN 50086-2.2) were published by BSI.

This is the first European standard for such conduit systems and has been written to conform to the Low Voltage Directive (LVD) and the Construction Product Directive (CPD).

EN50086 is a performance standard which identifies key product characteristics (detailed below). For each of these characteristics there are recommended tests with associated performance classifications.

The adjacent table and key allow you to check product suitability in line with the EN50086 performance classifications.

Compression Strength

(Performance Classification 1)

Resistance to deformation under compressive load.

Impact Resistance

(Performance Classification 2)

Resistance to brittle fracture and deformation under impact.

Minimum Temperature to EN50086

(Performance Classification 3)

The minimum operating temperature defined by the bending classification.

Maximum Temperature to EN50086

(Performance Classification 4)

The maximum operating temperature defined by the bending classification.

Bending to EN50086

(Performance Classification 5)

Flexible and pliable conduits can be bent by hand.

Flexible systems may flex frequently throughout their life and are suitable for both *static* and *dynamic* applications.

Pliable systems are intended only for static applications.

Electrical Properties (Performance Classification 6)

Conduit systems defined as electrical conductors or insulators.

System IP Rating to EN50086 (Performance Classifications 7 & 8) (see definitions on page 43)

The resistance of an assembled system to the ingress of solids and liquids, dependent on the combination of conduit and fittings.

The point of entry into adjoining equipment may require independent sealing to maintain the system IP rating, see sealing washers on page 23.

Corrosion (Performance Classification 9)

Metallic systems defined by their resistance to corrode under exposure to water vapour.

Tensile Strength (Performance Classification 10)

Resistance of a system to a short term tensile load at ambient temperature.

Non-Flame Propagating to EN50086

(Performance Classification 11)

Self-extinguishing within a given time once a fire source is removed.

Suspended Load Capability

(Performance Classification 12)

Resistance of a fitting to a high continuous tensile load at maximum temperature.

Thread Data

METRIC

Standard thread conforming to EN60423 & BS3643

PG

German Standard thread conforming to DIN40430

PF

Japanese conduit thread conforming to JIS B 0202

NPT

US taper seal pipe thread conforming to ANSI/ASME B1.20.1 – 1983

UNEF

American Unified Thread conforming to BS1580

THREAD SIZE mm	EXT. THREAD OUTSIDE DIAMETER	INT. THREAD INSIDE DIAMETER	PITCH	THREAD SIZE mm	EXT. THREAD OUTSIDE DIAMETER	INT. THREAD INSIDE DIAMETER	PITCH	THREAD SIZE (Inches)	EXT. THREAD OUTSIDE DIAMETER	INT. THREAD INSIDE DIAMETER	PITCH	THREAD SIZE (Inches)	EXT. THREAD OUTSIDE DIAMETER	PITCH	THREAD SIZE (Inches)	EXT. THREAD OUTSIDE DIAMETER	INT. THREAD INSIDE DIAMETER	PITCH
M8	8.0	6.9	1.0	PG7	12.5	11.3	1.27	1/4	13.0	–	1.34	–	–	–	5/8	15.9	14.7	1.06
M10	10.0	8.9	1.0	PG9	15.2	13.9	1.41	3/8	16.7	15.0	1.34	3/8	16.7	1.14	3/4	19.1	17.7	1.27
M12	12.0	10.9	1.0	PG11	18.6	17.3	1.41	1/2	21.0	18.6	1.81	1/2	21.0	1.81	11/16	20.6	19.3	1.27
M12	12.0	10.4	1.5	PG13.5	20.4	19.1	1.41	3/4	26.4	24.1	1.81	3/4	26.4	1.81	7/8	22.2	20.9	1.27
M16	16.0	14.4	1.5	PG16	22.5	21.2	1.41	1	33.3	30.3	2.31	1	33.3	2.21	15/16	23.8	22.4	1.27
M18	18.0	16.9	1.0	PG21	28.3	26.8	1.59	1 1/4	41.9	39.0	2.31	1 1/4	41.9	2.21	1	25.4	24.0	1.27
M20	20.0	18.4	1.5	PG29	37.0	35.5	1.59	1 1/2	47.8	44.8	2.31	1 1/2	47.8	2.21	1 1/8	28.6	27.0	1.41
M25	25.0	23.4	1.5	PG36	47.0	45.5	1.59	2	59.6	56.7	2.31	2	59.6	2.21	1 3/16	30.2	28.6	1.41
M30	30.0	28.4	1.5	PG42	54.0	52.5	1.59	–	–	–	–	–	–	–	1 1/4	31.8	30.2	1.41
M32	32.0	30.4	1.5	PG48	59.3	57.8	1.59	–	–	–	–	–	–	–	1 5/16	33.3	31.8	1.41
M40	40.0	38.4	1.5	–	–	–	–	–	–	–	–	–	–	–	1 3/8	34.9	33.4	1.41
M50	50.0	48.4	1.5	–	–	–	–	–	–	–	–	–	–	–	1 1/16	36.5	35.0	1.41
M63	63.0	61.4	1.5	–	–	–	–	–	–	–	–	–	–	–	1 3/4	44.5	42.9	1.41
M75	75.0	73.4	1.5	–	–	–	–	–	–	–	–	–	–	–	2	50.8	49.3	1.41
–	–	–	–	–	–	–	–	–	–	–	–	–	–	–	2 1/4	57.2	55.4	1.41

NOTE: Dimensions are nominal & in mm unless otherwise stated.

IP Ratings

The degree of ingress protection is indicated by two digits following the letters IP. The first refers to protection against the ingress of solid objects, the second refers to protection against the ingress of water.

Protection against solids
1st Digit

- 4** Protection against solid bodies larger than 1mm
- 5** Protection against dust (no harmful deposits)
- 6** Complete protection against dust

Example

Adaptalok system is IP66 which provides complete protection against dust and protection against jets of water of similar force to heavy seas.

Protection against water
2nd Digit

- 0** No protection
- 4** Protection against projections of water from all directions
- 5** Protection against jets of water from all directions
- 6** Protection against jets of water of similar force to heavy seas
- 7** Protection against ingress of water to a depth of 1 metre
- 8** Continuous submersion at a quoted pressure and time e.g. 2 bar at 24 hours

Cable Carrying Capacity

UK wiring regulations, BS7671 recommend that the total cross sectional area of the sum of the individual cables should not exceed 40% of the cross sectional area of the conduit. The nominal cross sectional area of single-core, stranded, PVC insulated cables is provided as a guide only. Other cables may have different dimensions.

NOMINAL CONDUCTOR SIZE (mm ²)	NOMINAL OVERALL CROSS SECTIONAL AREA (mm ²)
1.0	6.6
1.5	7.6
2.5	9.6
4.0	14.5
6.0	18.8
10.0	29.3
16.0	40.2
25.0	63.8
35.0	83.5
50.0	113.0
70.0	149.0
95.0	204.0

Example: Is SP20 suitable for five 4.0mm² & two 1.5mm² cables?

- The total cross sectional area of the conductors is 5 x 4.0mm² (for 4.0mm² conductors) + 2 x 7.6mm² (for 1.5mm² conductors) = 87.7mm²
- The cross sectional area of SP20 is 3.142 x [$\frac{\text{Inside Diameter}}{2}$]² = 224mm²
- % of conduit cross sectional area [$\frac{(a)}{(b)}$] x 100 = 39.1%

This is less than 40% therefore this conduit is suitable for this combination of cables.

The easiest way of installing cables into flexible & pliable conduit is to simultaneously draw in the cables with the conduit in straight condition before installation. UK wiring regulations prohibit the use of flexible or pliable conduit as an earthing conductor. Please phone the *Adaptaflex Infoline* for further guidance.

international approvals

As a worldwide supplier of conduit systems, Adaptaflex has an expanding portfolio of international approvals obtained from the various organisations indicated below.

The table shows the relevant approvals obtained for each conduit system.

Since approvals are constantly being added, audited & updated, please phone the Adaptaflex Infoline for the latest details.

METALLIC SYSTEMS								NON-METALLIC SYSTEMS										
CONDUIT TYPE	WITH FITTING	KITE MARK BSEN60086	CE LVD	LLOYDS	UL	LUL COMPLIANCE	AUS EX930	CONDUIT TYPE	WITH FITTING	KITE MARK BSEN60086 OR IMO	CE LVD	LLOYDS	UL	CSA 227.3 M-91	NF RT3-903	LUL COMPLIANCE	DIN5510	NF16-102
S	S	✓	✓	–	–	–	–	PA LIGHT	AL	✓	✓	–	UR	–	–	CONCESSION	✓	–
SS	S	✓	✓	–	–	–	–	PA STANDARD	AL	✓	✓	✓	UR	–	✓	CONCESSION	✓	I4F3
SP	SP(M)	✓	✓	–	–	–	–	PA HEAVY	AL	✓	✓	✓	UR	✓*	✓	CONCESSION	✓	I4F3
SN	SP(M)	✓	✓	–	–	–	–	PR	AL	✓	✓	✓	UR	–	–	APPROVED	✓	I2F2
LFH-SP	SP(M)	✓	✓	✓	–	FULL	–	PI	AL	✓	✓	–	UR	–	–	CONCESSION	✓	I4F3
SPL	SPL(M)	✓	✓	✓	–	UR	–	PIH	AL	–	✓	–	UR	✓*	–	CONCESSION	✓	I4F3
SPLHC	SPL(M)	✓	✓	–	–	–	–	PP	AL	–	✓	–	–	–	–	–	–	–
SPUL		–	✓	–	UL+CSA	–	–	PK	PK	✓	✓	–	–	–	–	FULL	–	I2F1
SB	SB	✓	✓	–	–	–	–	PKTC	PB	–	✓	–	–	–	–	FULL	–	I2F1
STC	SB	✓	✓	–	–	–	–	PKSS	PB	–	✓	–	–	–	–	FULL	–	I2F1
SPB	SPB	✓	✓	–	–	–	–	PRTC	PB	–	✓	–	–	–	–	APPROVED	–	I2F2
SPTC	SPB	✓	✓	–	–	–	–	PRSS	PB	–	✓	–	–	–	–	APPROVED	–	I2F2
SPLHCB	SPLB	✓	✓	–	–	–	–	KFL	KC	16 - 25	✓	–	–	–	–	–	–	–
LSP	LSP	✓	✓	–	–	–	–	KFS	KC	16 - 25	✓	–	–	–	–	–	–	–
								KFM	KC	16 - 25	✓	–	–	–	–	–	–	–
								XF	XF	✓	✓	–	–	–	–	–	–	–

*17, 22, 28, 34, 42mm only.

Infoline: 01675 468202

Glossary

Fire Performance

Adaptaflex has introduced a set of symbols to help the user specify conduit systems for installations where fire performance is of particular concern.

Each symbol encompasses a range of properties relevant to the high specification materials used in the construction of the conduit.

They are in an ascending scale of performance from Low Fire Hazard (LFH) featuring zero halogen through to Super Low Fire Hazard (SLFH) featuring zero nitrogen. In addition, Inherent Low Fire Hazard systems (ILFH) are classified as being all metal systems.

For more detailed information on fire performance classifications, see the key on page 39.



LOW FIRE HAZARD



ENHANCED LOW FIRE HAZARD



SUPER LOW FIRE HAZARD



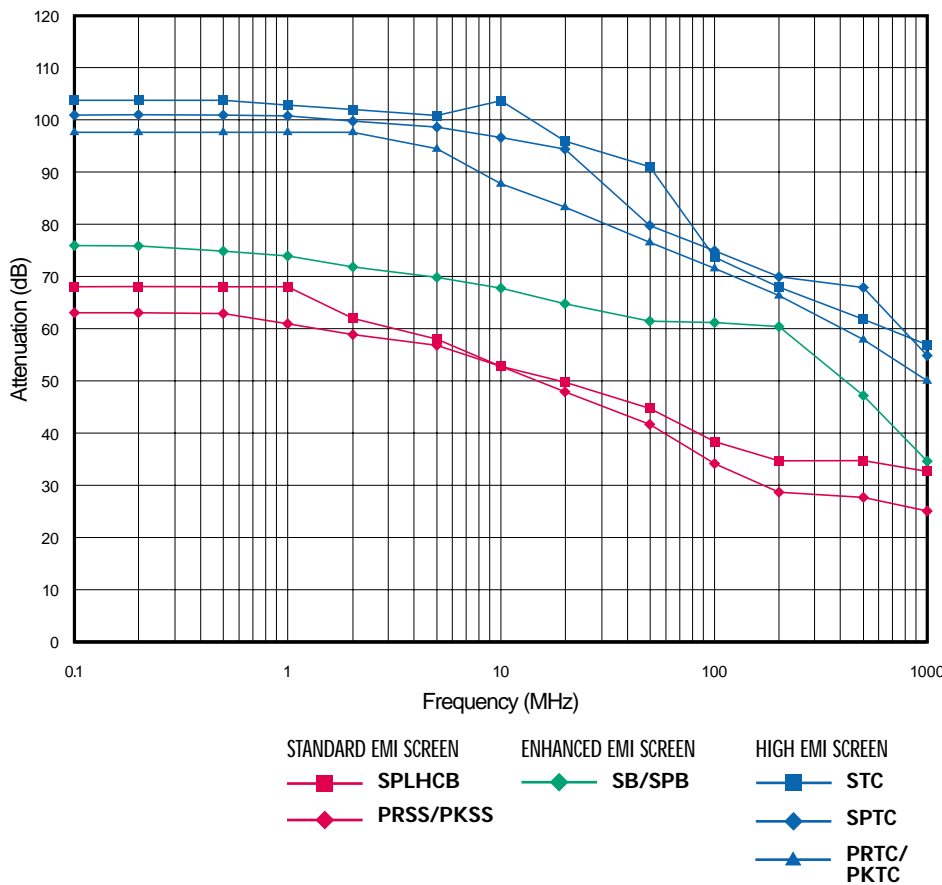
INHERENT LOW FIRE HAZARD

The European Directive on Electromagnetic Compatibility (EMC) 89/336/EEC requires any electrical equipment/ installation to be constructed so that it neither produces Electromagnetic Interference (EMI), sufficient to interfere with radio and telecommunications equipment, nor is itself affected by EMI.

All conduit systems are considered electrically passive since they do not produce or are affected by EMI. However, Adaptaflex has introduced a new range of "Screen Systems" which offer a cost-effective alternative to individually screened cables within applications where cross talk has no adverse effect.

Additionally the user gains the mechanical advantages of a conduit system and a simplified means of modification; e.g. addition, substitution or replacement of cables in an existing cable run.

The graph below shows the results of different types of 20/21mm diameter screened conduit, with its appropriate fittings, tested by ERA Technology, to IEC96/2:93 (Radio frequency cables Part 1). Tests measured attenuation in decibels (dB) over the frequency range covered by the EMC Directive, 0.1 to 1000MHz. The test data allows comparison with other screened conduit systems, and cables tested to IEC 96-1.



ADAPTFLEX TRADE MARKS

Adaptaflex, Adaptaflex Screen Systems, Adaptaflex Hi-Spec Systems, Adaptalok, Adapting, Adaptaflex, Adaptaflex, Korifit, Stayflex & Xtraflex.

ADAPTFLEX PATENTS

Adaptalok fittings; type KF Korifit fittings; type B Adaptaflex fittings; type AWB anti-vibration washer; pending on type ACB/ACG conduit clips.

ERRORS, OMISSIONS & AMENDMENTS EXCEPTED

Information given in this document was correct to the best of our knowledge at the original publication date and is for guidance only.

Adaptaflex is not liable for claims arising from product misuse.

Our policy is one of continuous development and specifications may change at any time.

EMI Screen Systems

For applications where electromagnetic interference is of particular concern we have classified suitable conduit systems by means of symbols. These are related in an ascending scale of performance from Standard EMI Screen (products featuring a stainless steel overbraid) through to High EMI Screen (products featuring a tinned copper overbraid).

For more detailed information see above.



**STANDARD
EMI SCREEN**



**ENHANCED
EMI SCREEN**



**HIGH
EMI SCREEN**

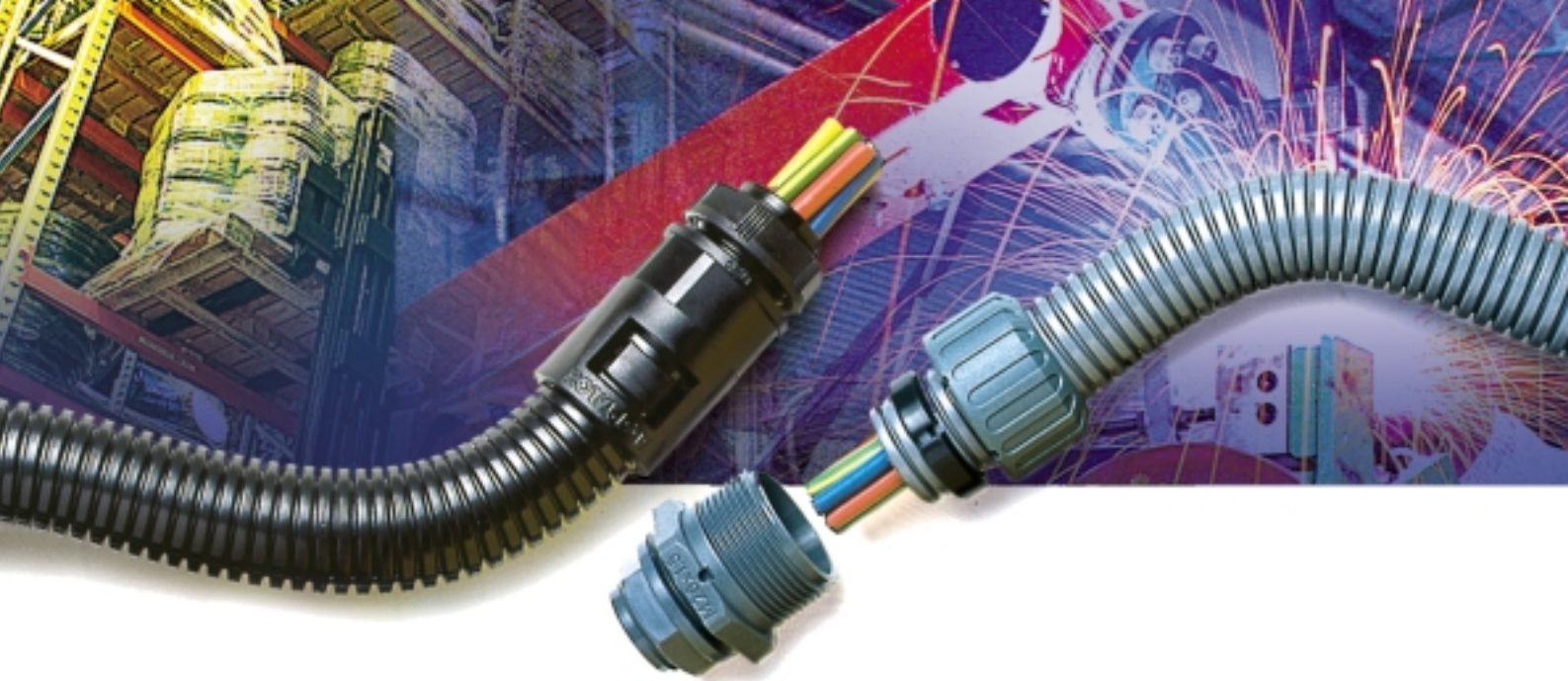
Fitting Characteristics



FITTING OR THREAD SWIVELS INDEPENDENTLY OF CONDUIT DURING INSTALLATION BUT IS NOT SUITABLE AS A ROTATING JOINT IN CONSTANTLY MOVING APPLICATIONS



FITTING ROTATES INDEPENDENTLY OF THE CONDUIT TO ACT AS A ROTATING JOINT WITHIN CONSTANTLY MOVING APPLICATIONS



Adaptaflex Limited

Station Road, Coleshill, Birmingham B46 1HT, UK

Switchboard: +44 (0)1675 468222

UK Sales: 01675 468200

UK Fax: 01675 464930

E-mail: sales@adaptaflex.co.uk

Export Sales: +44 (0)1675 468246

Export Fax: +44 (0)1675 464944

E-mail: export@adaptaflex.co.uk

Website: www.adaptaflex.com

