

ACCESSORIES

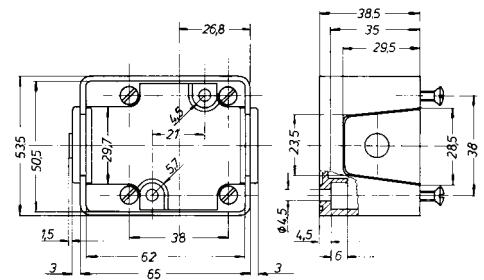
SOCKET OUTLETS



SURFACE-MOUNTED HOUSING

for socket outlet 1461, 1662
thermoplastic

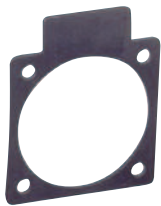
COLOUR	ITEM NO.	WEIGHT g/EACH	PU
black	1461007	49	10



MOUNTING PLATE

for surface-mounted housing
for snapping onto DIN rail
acc. to DIN EN 60715 35 mm

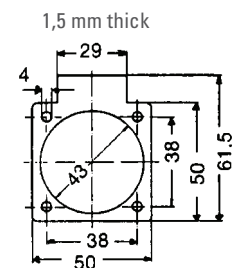
ITEM NO.	WEIGHT g/EACH	PU
1461SB	14	100



RUBBER SEAL

for socket outlet
1461, 1462,
CZ, SEV, UL und BS

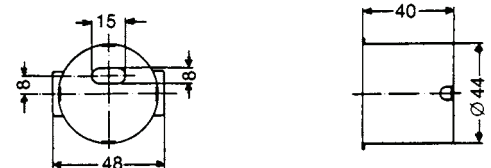
COLOUR	ITEM NO.	WEIGHT g/EACH	PU
black	8632316	3	100



PROTECTIVE CAP

for socket outlet 1461

ITEM NO.	WEIGHT g/EACH	PU
8798416	5	10



ADAPTER

CEE plug 3-pole, 16 A, 230 V,
6h blue on
SCHUKO socket 1461050
splash-proof IP44

ITEM NO.	WEIGHT g/EACH	PU
ADP050	165	5

